

### III. Cost of Living

Anchorage Consumer Price Index - Annual Averages ..... 78

Anchorage Consumer Price Index - 1996 Detail ..... 80

Anchorage Consumer Price Index - Semi-Annual Averages ..... 82

U.S. Consumer Price Index - Annual Averages ..... 83

ACCRA Cost of Living Index ..... 84

Cost of Food at Home ..... 89

Cost of Electricity ..... 92

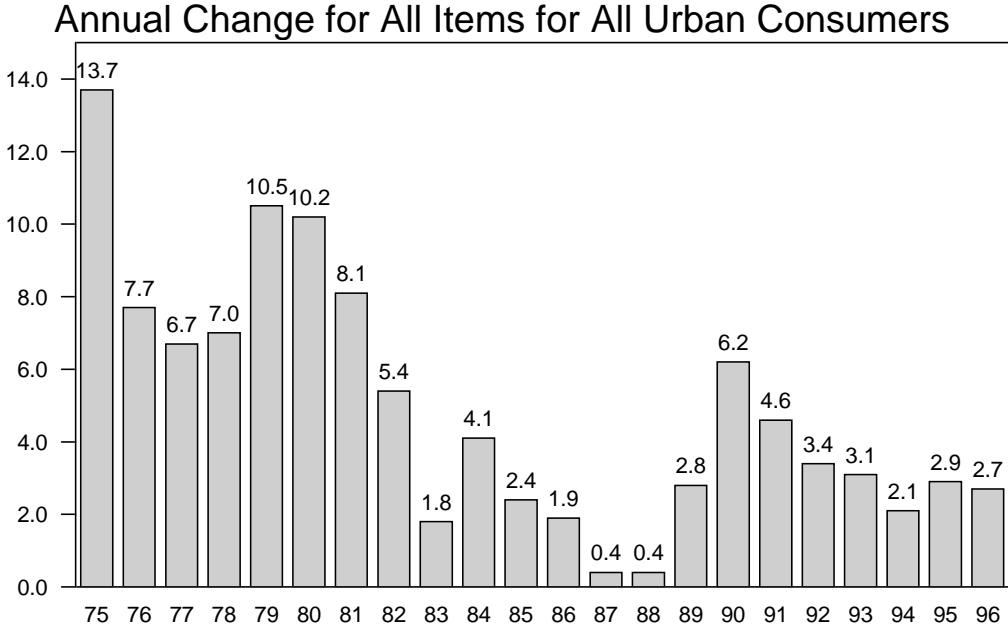
Cost of Unleaded Auto Gas ..... 92

### Anchorage Consumer Price Index for All Urban Consumers (CPI-U)

Year	All Items	All Except Shelter	Apparel & Upkeep	Entertainment	Food & Beverage	Housing	Medical Care	Oth Goods & Services	Transportation
INDEX ( 1982 to 1984 = 100)									
1980	85.5	84.7	89.7	79.0	89.7	85.9	78.8	83.1	82.2
1981	92.4	92.0	94.1	85.9	94.3	92.5	86.9	88.1	92.7
1982	97.4	96.3	96.6	94.7	97.2	98.2	94.8	93.2	96.8
1983	99.2	99.9	101.6	100.6	99.7	99.0	99.7	101.5	98.5
1984	103.3	103.8	101.7	104.6	103.2	102.7	105.5	105.3	104.6
1985	105.8	107.5	105.8	108.9	106.2	103.0	110.9	114.2	108.2
1986	107.8	111.2	109.0	112.4	110.8	102.6	127.8	123.2	107.8
1987	108.2	115.1	116.6	116.4	113.1	97.5	137.0	132.2	111.3
1988	108.6	117.8	119.1	120.1	113.8	95.4	145.8	138.1	113.0
1989	111.7	122.3	125.0	128.2	117.2	96.3	154.4	143.7	116.7
1990	118.6	128.0	127.7	141.9	123.7	103.9	161.2	155.7	120.7
1991	124.0	131.9	126.6	148.8	127.7	111.2	173.5	166.9	121.7
1992	128.2	134.6	130.2	151.0	130.3	116.6	183.0	175.2	123.3
1993	132.2	137.9	131.2	157.9	131.2	121.1	189.6	177.9	128.8
1994	135.0	140.3	128.9	166.6	131.9	122.9	197.8	171.6	136.9
1995	138.9	144.6	130.0	171.3	138.5	124.9	211.6	163.3	143.8
1996	142.7	148.4	128.7	177.1	143.4	127.9	231.1	164.6	147.2
PERCENT CHANGE FROM PRIOR YEAR									
1980	10.2%	10.0%	9.8%	6.0%	6.8%	10.1%	14.0%	8.1%	15.3%
1981	8.1%	8.6%	4.9%	8.7%	5.1%	7.7%	10.3%	6.0%	12.8%
1982	5.4%	4.7%	2.7%	10.2%	3.1%	6.2%	9.1%	5.8%	4.4%
1983	1.8%	3.7%	5.2%	6.2%	2.6%	0.8%	5.2%	8.9%	1.8%
1984	4.1%	3.9%	0.1%	4.0%	3.5%	3.7%	5.8%	3.7%	6.2%
1985	2.4%	3.6%	4.0%	4.1%	2.9%	0.3%	5.1%	8.5%	3.4%
1986	1.9%	3.4%	3.0%	3.2%	4.3%	-0.4%	15.2%	7.9%	-0.4%
1987	0.4%	3.5%	7.0%	3.6%	2.1%	-5.0%	7.2%	7.3%	3.2%
1988	0.4%	2.3%	2.1%	3.2%	0.6%	-2.2%	6.4%	4.5%	1.5%
1989	2.9%	3.8%	5.0%	6.7%	3.0%	0.9%	5.9%	4.1%	3.3%
1990	6.2%	4.7%	2.2%	10.7%	5.5%	7.9%	4.4%	8.4%	3.4%
1991	4.6%	3.0%	-0.9%	4.9%	3.2%	7.0%	7.6%	7.2%	0.8%
1992	3.4%	2.0%	2.8%	1.5%	2.0%	4.9%	5.5%	5.0%	1.3%
1993	3.1%	2.5%	0.7%	4.6%	0.7%	3.9%	3.6%	1.5%	4.4%
1994	2.1%	1.7%	-1.8%	5.5%	0.5%	1.5%	4.3%	-3.5%	6.4%
1995	2.9%	3.1%	0.9%	2.8%	5.0%	1.6%	7.0%	-4.8%	5.0%
1996	2.7%	2.6%	-1.0%	3.4%	3.5%	2.4%	9.2%	0.8%	2.4%

Source: U.S. Department of Labor, Bureau of Labor Statistics. (Revised 2/19/97)

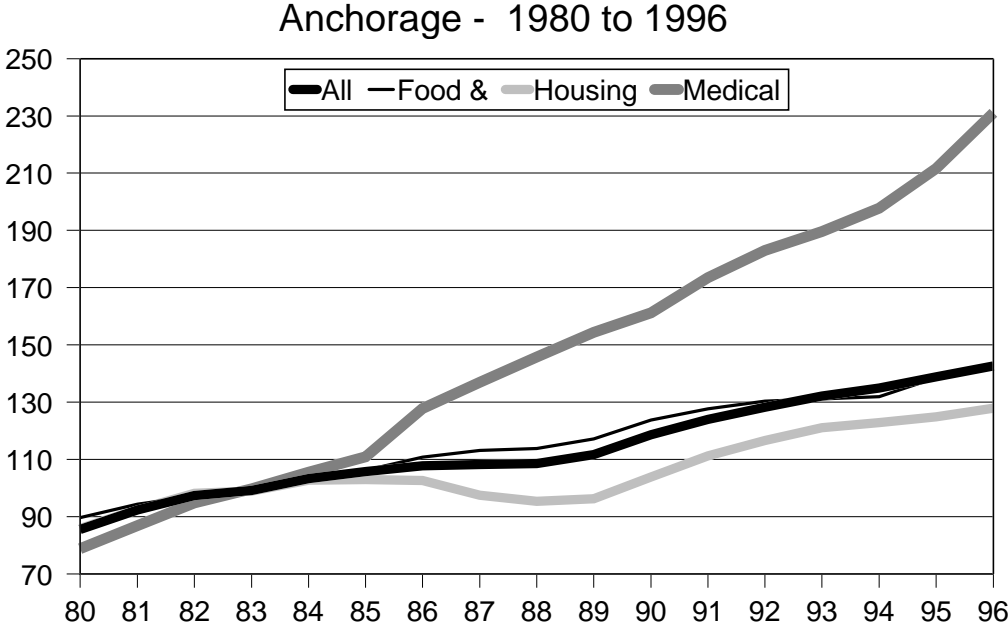
# Anchorage Consumer Price Index (CPI-U)



Source: U.S. Department of Labor, Bureau of Labor Statistics. (Revised 2/20/97)

Consumer Price Index #2

# Consumer Price Index (CPI-U)



Source: U.S. Department of Labor, Bureau of Labor Statistics. (Revised 3/25/97)

Consumer Price Index #6

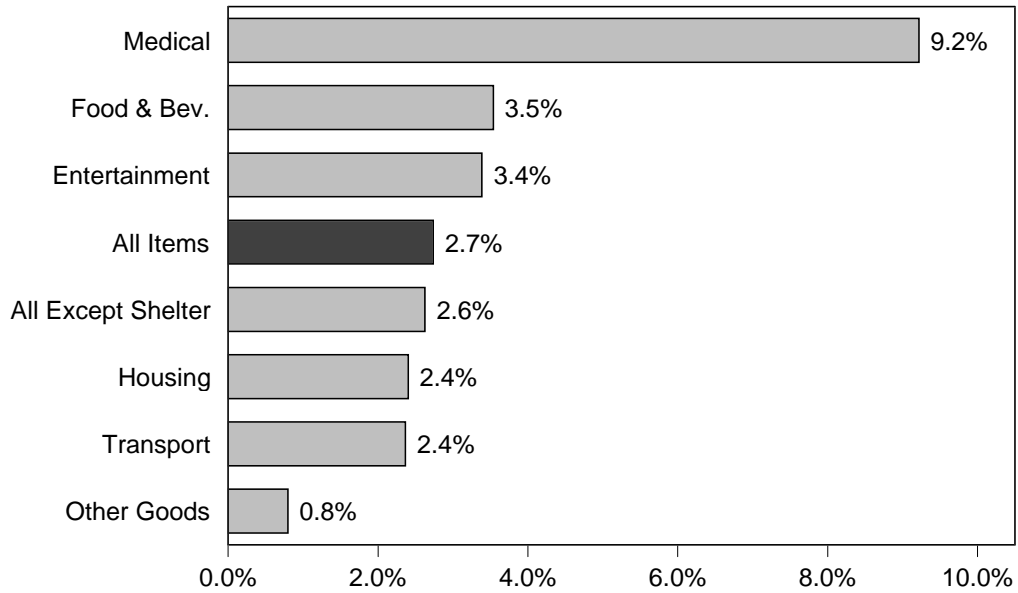
**Detailed Anchorage Consumer Price Index (1982-84=100)  
All Urban Consumers 1995 & 1996**

<b>Expenditure category</b>	<b>Avg. Annual Index 1995</b>	<b>Avg. Annual Index 1996</b>	<b>% Chg. 1994-95</b>	<b>% Chg. 1995-96</b>
<b>All items</b>	<b>138.9</b>	<b>142.7</b>	<b>2.9</b>	<b>2.7</b>
All items (October 1967=100)	370.7	380.9	-	-
<b>Food and beverages</b>	<b>138.5</b>	<b>143.4</b>	<b>5.0</b>	<b>3.5</b>
Food	138.0	143.6	5.7	4.1
Food at home	143.8	148.2	6.2	3.1
Cereals and bakery products	147.2	149.4	4.3	1.5
Meats, poultry, fish and eggs	134.8	133.5	3.0	-1.0
Meats, poultry, and fish	135.4	133.2	3.1	-1.6
Dairy products	129.5	133.4	0.7	3.0
Fruits and vegetables	198.4	216.2	17.4	9.0
Other food at home	123.4	126.0	3.4	2.1
Food aw ay from home	129.7	136.3	4.3	5.1
Alcoholic beverages	140.8	141.5	0.9	0.5
<b>Housing</b>	<b>124.9</b>	<b>127.9</b>	<b>1.6</b>	<b>2.4</b>
Shelter	124.7	128.6	2.2	3.1
Renters' cost 1/	148.4	152.4	3.1	2.7
Rent, residential	115.3	117.4	1.5	1.8
Other renters' costs	269.3	280.7	6.0	4.2
Homeow ners' costs 1/	126.0	129.8	1.9	3.0
Ow ners' equivalent rent 1/	125.8	129.7	1.9	3.1
Fuel and other utilities	141.8	141.2	-0.8	-0.4
Fuel	138.5	136.8	-2.1	-1.2
Fuel oil & Other household fuel com.	92.9	99.6	-	7.2
Fuel Oil	95.7	104.7	-	9.4
Other household fuel commodities 2/	106.8	109.3	0.0	2.3
Gas (piped) and electricity	155.5	152.4	-2.0	-2.0
Electricity	150.9	150.4	-3.3	-0.3
Utility (piped) gas	159.5	150.9	0.8	-5.4
Household furnishings and operation	112.6	113.9	0.7	1.2
<b>Apparel and upkeep</b>	<b>130.0</b>	<b>128.7</b>	<b>0.9</b>	<b>-1.0</b>
Apparel commodities	129.0	127.6	0.9	-1.1
Men's and boys' apparel	165.1	159.8	3.3	-3.2
Women's and girls' apparel	123.8	126.7	-2.3	2.3
Footw ear	96.0	87.9	-0.5	-8.4
<b>Transportation</b>	<b>143.8</b>	<b>147.2</b>	<b>5.0</b>	<b>2.4</b>
Private transportation	137.1	142.1	3.2	3.6
Motor fuel	101.0	110.8	2.2	9.7
Gasoline	101.4	111.3	2.2	9.8
Gasoline, unleaded regular	98.6	107.8	1.8	9.3
Gasoline, unleaded midgrade 3/	97.7	108.0	-	10.5
Gasoline, unleaded premium	103.6	114.8	3.2	10.8
Public transportation	186.7	179.1	14.1	-4.1
<b>Medical care</b>	<b>211.6</b>	<b>231.1</b>	<b>7.0</b>	<b>9.2</b>
<b>Entertainment</b>	<b>171.3</b>	<b>177.1</b>	<b>2.8</b>	<b>3.4</b>
<b>Other goods and services</b>	<b>163.3</b>	<b>164.6</b>	<b>-4.8</b>	<b>0.8</b>
Personal care	131.4	127.5	-1.5	-3.0
<b>Special indexes</b>				
All items less shelter	144.6	148.4	3.1	2.6
All items less medical care	135.7	138.9	2.6	2.4
All items less energy	141.0	144.8	3.0	2.7
Energy	114.4	119.1	0.0	4.1

Source: U.S. Department of Labor, Bureau of Labor Statistics. 1/Indexes on a Nov. 1982=100 base. 2/Indexes on a Dec. 1986=100 base. 3/Indexes on a December 1993=100 base. - Data not available. (Revised 2/28/97)

# Consumer Price Index Major Categories

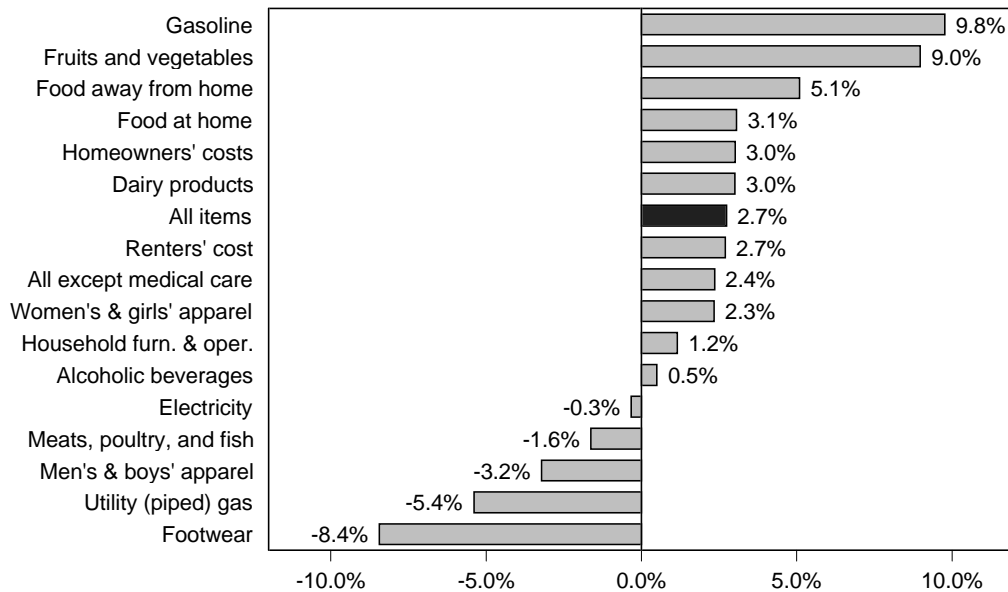
Anchorage - Annual % Change\* from 1995-96



Source: U.S. Department of Labor, Bureau of Labor Statistics. \*Represents the average annual percent change in each component for 1996, compared to 1995. (Revised 3/25/97) Consumer Price Index #18

# Consumer Price Index Selected Items

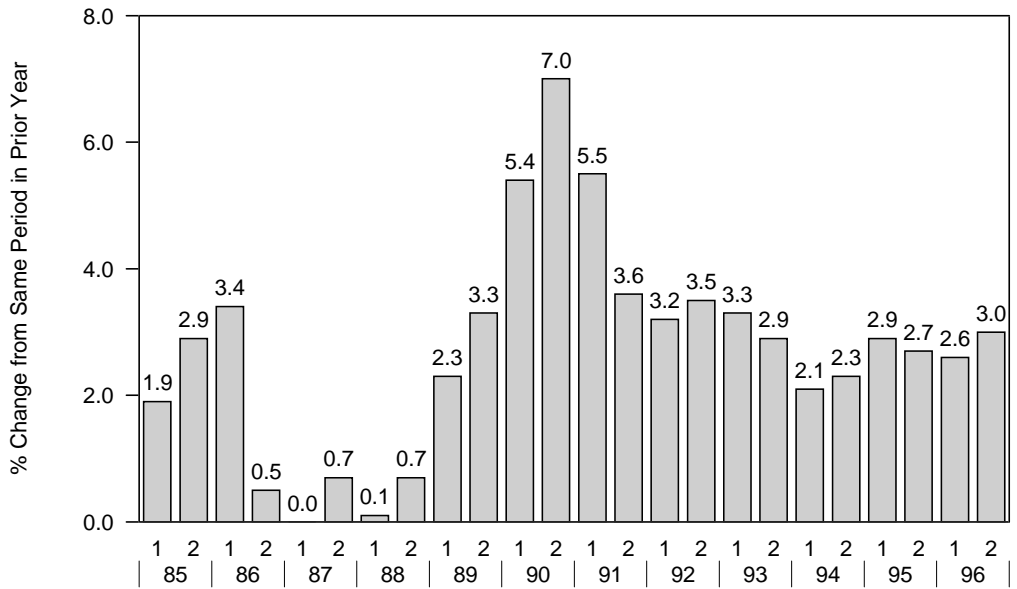
Anchorage - Annual % Change\* from 1995-96



Source: U.S. Department of Labor, Bureau of Labor Statistics. \*Represents the average annual percent change in each component for 1996, compared to 1995. (Revised 3/26/97) Consumer Price Index #17

# Anchorage Consumer Price Index (CPI-U)

Semi-Annual % Change from Prior Year - 1984-1996



Source: U.S. Department of Labor, Bureau of Labor Statistics. (Revised 2/20/97)

Consumer Price Index #3

## Anchorage Consumer Price Index for All Urban Consumers (CPI-U) Semi-Annual and Annual Averages - 1984 to 1996

INDEX (1982 TO 1984 = 100)			Percent Change from Prior Year				
Year	First Half	Second Half	Annual Average	Year	First Half	Second Half	Annual Average
1984	102.7	103.9	103.3	1984	-	-	-
1985	104.7	106.9	105.8	1985	1.9%	2.9%	2.4%
1986	108.3	107.4	107.8	1986	3.4%	0.5%	1.9%
1987	108.3	108.1	108.2	1987	0.0%	0.7%	0.4%
1988	108.4	108.9	108.6	1988	0.1%	0.7%	0.4%
1989	110.9	112.5	111.7	1989	2.3%	3.3%	2.9%
1990	116.9	120.4	118.6	1990	5.4%	7.0%	6.2%
1991	123.3	124.7	124.0	1991	5.5%	3.6%	4.6%
1992	127.3	129.1	128.2	1992	3.2%	3.5%	3.4%
1993	131.5	132.8	132.2	1993	3.3%	2.9%	3.1%
1994	134.3	135.8	135.0	1994	2.1%	2.3%	2.1%
1995	138.2	139.5	138.9	1995	2.9%	2.7%	2.9%
1996	141.8	143.7	142.7	1996	2.6%	3.0%	2.7%

Source: U.S. Department of Labor, Bureau of Labor Statistics. (Revised 2/20/97)

**U.S. City Average Consumer Price Index for All Urban Consumers (CPI-U) - All Items**

**INDEX (1982 to 1984 = 100)**

<b>Year</b>	<b>Jan</b>	<b>Feb</b>	<b>Mar</b>	<b>Apr</b>	<b>May</b>	<b>Jun</b>	<b>Jul</b>	<b>Aug</b>	<b>Sep</b>	<b>Oct</b>	<b>Nov</b>	<b>Dec</b>	<b>Avg</b>
1974	46.6	47.2	47.8	48.0	48.6	49.0	49.4	50.0	50.6	51.1	51.5	51.9	49.3
1975	52.1	52.5	52.7	52.9	53.2	53.6	54.2	54.3	54.6	54.9	55.3	55.5	53.8
1976	55.6	55.8	55.9	56.1	56.5	56.8	57.1	57.4	57.6	57.9	58.0	58.2	56.9
1977	58.5	59.1	59.5	60.0	60.3	60.7	61.0	61.2	61.4	61.6	61.9	62.1	60.6
1978	62.5	62.9	63.4	63.9	64.5	65.2	65.7	66.0	66.5	67.1	67.4	67.7	65.2
1979	68.3	69.1	69.8	70.6	71.5	72.3	73.1	73.8	74.6	75.2	75.9	76.7	72.6
1980	77.8	78.9	80.1	81.0	81.8	82.7	82.7	83.3	84.0	84.8	85.5	86.3	82.4
1981	87.0	87.9	88.5	89.1	89.8	90.6	91.6	92.3	93.2	93.4	93.7	94.0	90.9
1982	94.3	94.6	94.5	94.9	95.8	97.0	97.5	97.7	97.9	98.2	98.0	97.6	96.5
1983	97.8	97.9	97.9	98.6	99.2	99.5	99.9	100.2	100.7	101.0	101.2	101.3	99.6
1984	101.9	102.4	102.6	103.1	103.4	103.7	104.1	104.5	105.0	105.3	105.3	105.3	103.9
1985	105.5	106.0	106.4	106.9	107.3	107.6	107.8	108.0	108.3	108.7	109.0	109.3	107.6
1986	109.6	109.3	108.8	108.6	108.9	109.5	109.5	109.7	110.2	110.3	110.4	110.5	109.6
1987	111.2	111.6	112.1	112.7	113.1	113.5	113.8	114.4	115.0	115.3	115.4	115.4	113.6
1988	115.7	116.0	116.5	117.1	117.5	118.0	118.5	119.0	119.8	120.2	120.3	120.5	118.3
1989	121.1	121.6	122.3	123.1	123.8	124.1	124.4	124.6	125.0	125.6	125.9	126.1	124.0
1990	127.4	128.0	128.7	128.9	129.2	129.9	130.4	131.6	132.7	133.5	133.8	133.8	130.7
1991	134.6	134.8	135.0	135.2	135.6	136.0	136.2	136.6	137.2	137.4	137.8	137.9	136.2
1992	138.1	138.6	139.3	139.5	139.7	140.2	140.5	140.9	141.3	141.8	142.0	141.9	140.3
1993	142.6	143.1	143.6	144.0	144.2	144.4	144.4	144.8	145.1	145.7	145.8	145.8	144.5
1994	146.2	146.7	147.2	147.4	147.5	148.0	148.4	149.0	149.4	149.5	149.7	149.7	148.2
1995	150.3	150.9	151.4	151.9	152.2	152.5	152.5	152.9	153.2	153.7	153.6	153.5	152.4
1996	154.4	154.9	155.7	156.3	156.6	156.7	157.0	157.3	157.8	158.3	158.6	158.6	156.9

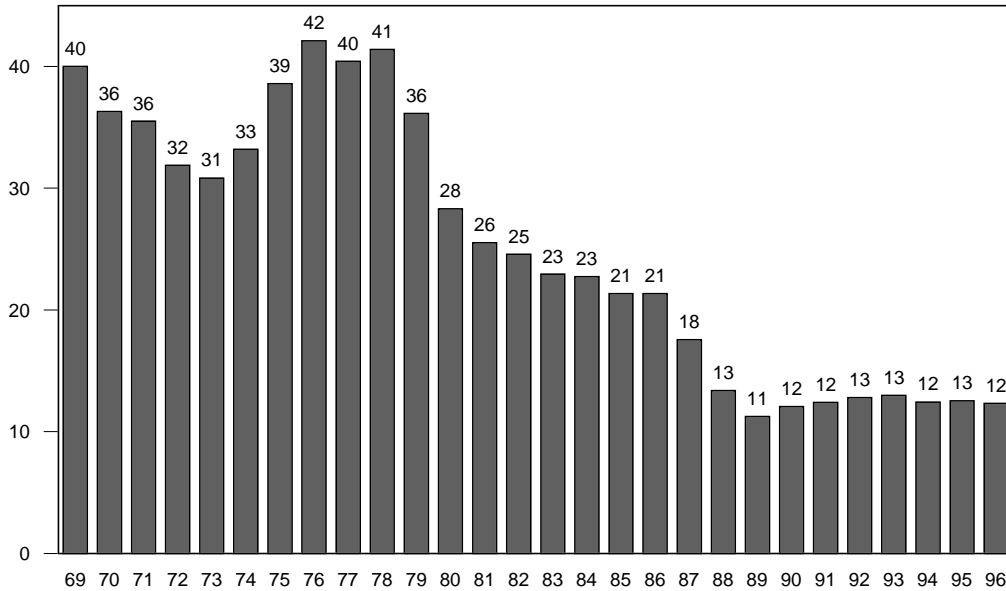
**Percentage Increases from Prior Year**

<b>Year</b>	<b>Jan</b>	<b>Feb</b>	<b>Mar</b>	<b>Apr</b>	<b>May</b>	<b>Jun</b>	<b>Jul</b>	<b>Aug</b>	<b>Sep</b>	<b>Oct</b>	<b>Nov</b>	<b>Dec</b>	<b>Avg</b>
1975	11.8	11.2	10.3	10.2	9.5	9.4	9.7	8.6	7.9	7.4	7.4	6.9	9.1
1976	6.7	6.3	6.1	6.0	6.2	6.0	5.4	5.7	5.5	5.5	4.9	4.9	5.8
1977	5.2	5.9	6.4	7.0	6.7	6.9	6.8	6.6	6.6	6.4	6.7	6.7	6.5
1978	6.8	6.4	6.6	6.5	7.0	7.4	7.7	7.8	8.3	8.9	8.9	9.0	7.6
1979	9.3	9.9	10.1	10.5	10.9	10.9	11.3	11.8	12.2	12.1	12.6	13.3	11.3
1980	13.9	14.2	14.8	14.7	14.4	14.4	13.1	12.9	12.6	12.8	12.6	12.5	13.5
1981	11.8	11.4	10.5	10.0	9.8	9.6	10.8	10.8	11.0	10.1	9.6	8.9	10.3
1982	8.4	7.6	6.8	6.5	6.7	7.1	6.4	5.9	5.0	5.1	4.6	3.8	6.2
1983	3.7	3.5	3.6	3.9	3.5	2.6	2.5	2.6	2.9	2.9	3.3	3.8	3.2
1984	4.2	4.6	4.8	4.6	4.2	4.2	4.2	4.3	4.3	4.3	4.1	3.9	4.3
1985	3.5	3.5	3.7	3.7	3.8	3.8	3.6	3.3	3.1	3.2	3.5	3.8	3.6
1986	3.9	3.1	2.3	1.6	1.5	1.8	1.6	1.6	1.8	1.5	1.3	1.1	1.9
1987	1.5	2.1	3.0	3.8	3.9	3.7	3.9	4.3	4.4	4.5	4.5	4.4	3.6
1988	4.0	3.9	3.9	3.9	3.9	4.0	4.1	4.0	4.2	4.2	4.2	4.4	4.1
1989	4.7	4.8	5.0	5.1	5.4	5.2	5.0	4.7	4.3	4.5	4.7	4.6	4.8
1990	5.2	5.3	5.2	4.7	4.4	4.7	4.8	5.6	6.2	6.3	6.3	6.1	5.4
1991	5.7	5.3	4.9	4.9	5.0	4.7	4.4	3.8	3.4	2.9	3.0	3.1	4.2
1992	2.6	2.8	3.2	3.2	3.0	3.1	3.2	3.1	3.0	3.2	3.0	2.9	3.0
1993	3.3	3.2	3.1	3.2	3.2	3.0	2.8	2.8	2.7	2.8	2.7	2.7	3.0
1994	2.5	2.5	2.5	2.4	2.3	2.5	2.8	2.9	3.0	2.6	2.7	2.7	2.6
1995	2.8	2.9	2.9	3.1	3.2	3.0	2.8	2.6	2.5	2.8	2.6	2.5	2.8
1996	2.7	2.7	2.8	2.9	2.9	2.8	3.0	2.9	3.0	3.0	3.3	3.3	2.9

Source: U.S. Department of Labor, Bureau of Labor Statistics. (Revised 2/28/97)

# %Anchorage Cost of Living is Above U.S.

1969-1996

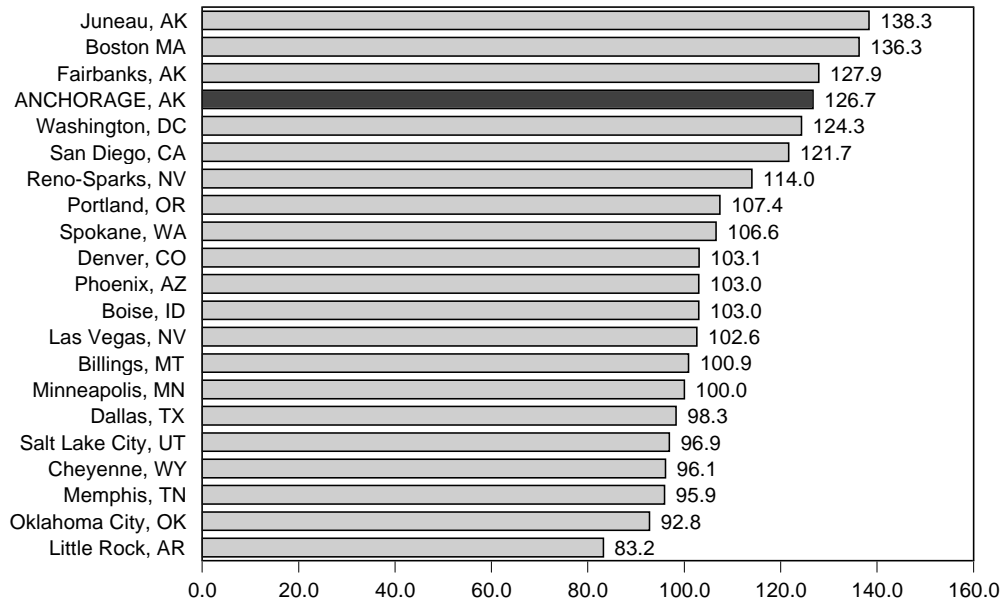


Sources: Data for 1969-1981 is based on the U.S. Department of Labor, Bureau of Labor Statistics. Estimates for 1982-1996 inflate the 1981 data using annual changes in the Anchorage and U.S. CPI. annual Anchorage and U.S. CPI increases CPI Statistics, "Urban Intermediate Budget for a 4-Persons Family." (Revised 3/25/97)

Consumer Price Index #20

## ACCRA Cost of Living Index - All Items

Anchorage & Selected U.S. Cities - 2nd Quarter -1996



Source: ACCRA Cost of Living Index, Louisville, Kentucky. (Revised 3/26/97)

97 ACCRA #1



**ACCRA Cost of Living Index - Second Quarter - 1996**  
**Comparison of Anchorage & Selected U.S. Cities**

LOCATION Index % Weight	ALL 100%	Grocery 16%	Hous. 28%	Utilities 8%	Transp. 10%	Medical 5%	Misc. 33%
<b>ANCHORAGE, AK</b>	126.7	123.6	140.8	104.8	105.3	168.9	119.7
Fairbanks, AK	127.9	126.7	135.7	148.9	111.4	168.4	113.8
Juneau, AK	138.3	121.7	157.4	166.0	108.8	160.0	127.4
Kodiak, AK	145.2	147.1	155.7	169.8	115.5	165.1	133.9
Birmingham, AL	100.0	98.4	97.7	100.6	95.7	97.1	104.2
Phoenix, AZ	103.0	104.3	99.3	109.8	113.3	115.2	98.8
Little Rock, AR	83.2	94.5	71.1	104.8	95.0	72.9	81.4
Bakersfield, CA	104.2	105.0	92.6	127.5	109.1	114.8	104.8
Los Angeles-Long Beach, CA	115.7	113.5	129.1	110.9	113.2	117.3	107.0
San Diego, CA	121.7	112.2	152.5	99.7	126.6	121.6	104.1
Colorado Springs, CO	102.9	99.1	120.2	69.3	99.2	124.8	95.3
Denver, CO	103.1	98.4	117.7	72.9	106.2	121.8	96.0
Washington, DC	124.3	109.0	158.8	93.0	125.3	116.7	111.1
Jacksonville, FL	96.7	101.3	85.9	106.4	103.3	99.4	98.9
Boise, ID	103.0	101.3	108.2	75.7	94.0	114.0	106.4
Indianapolis, IN	95.8	97.9	93.0	90.8	98.5	94.8	97.8
Louisville, KY	91.5	98.3	82.5	90.9	97.6	92.3	94.1
New Orleans, LA	94.1	96.8	81.6	132.5	97.6	81.7	95.4
Baltimore, MD	99.9	103.6	97.6	111.1	103.2	99.1	96.5
Boston MA	136.3	116.2	186.1	135.5	117.6	135.3	109.4
Lansing, MI	106.2	107.4	122.2	74.9	102.3	106.2	100.6
Minneapolis, MN	100.0	99.2	95.0	98.8	107.7	117.1	99.6
Jackson, MS	92.8	94.9	85.5	112.6	91.4	83.5	95.1
Kansas City, MO-KS	96.3	94.9	92.3	93.0	98.6	112.4	97.7
Billings, MT	100.9	102.7	102.2	83.0	101.2	103.0	102.9
Omaha, NE	93.2	93.0	93.8	85.2	104.0	90.3	92.4
Las Vegas, NV	102.6	105.6	106.7	74.8	110.0	119.9	99.1
Reno-Sparks, NV	114.0	106.8	130.5	97.0	113.7	114.8	107.6
Albany, NY	109.6	99.7	112.5	133.3	105.4	106.4	107.8
New York (Manhattan), NY	226.0	144.8	434.6	171.9	121.4	205.9	133.8
Charlotte, NC	98.8	95.3	97.3	102.3	97.2	102.5	100.6
Oklahoma City, OK	92.8	93.8	78.5	118.4	95.0	95.2	97.2
Portland, OR	107.4	101.0	119.5	81.8	107.3	119.9	104.1
Philadelphia, PA	126.4	113.1	143.9	198.5	114.0	99.3	108.7
Columbia, SC	94.2	94.7	90.2	110.2	87.6	89.9	96.1
Sioux Falls, SD	95.5	96.2	92.1	92.8	96.0	102.6	97.3
Memphis, TN	95.9	106.5	94.9	77.6	100.9	93.2	95.2
Dallas, TX	98.3	98.0	93.6	98.8	103.4	106.8	99.3
Houston, TX	95.4	91.9	86.9	97.5	111.4	104.1	97.9
Provo-Orem, UT	102.3	95.6	114.9	85.2	101.8	119.6	95.9
Salt Lake City, UT	96.9	99.4	94.8	86.9	100.4	106.2	97.3
Spokane, WA	106.6	100.4	123.1	61.1	94.5	123.9	106.8
Tacoma, WA	103.4	102.7	101.5	75.5	107.9	142.4	103.7
Charleston, WV	100.3	101.8	106.3	108.6	102.6	91.8	93.3
Cheyenne, WY	96.1	102.7	92.5	81.9	97.3	99.4	98.5

Source: ACCRA Cost of Living Index. Anchorage data compiled by MOA Community Planning & Development Department. (Revised 3/26/97)

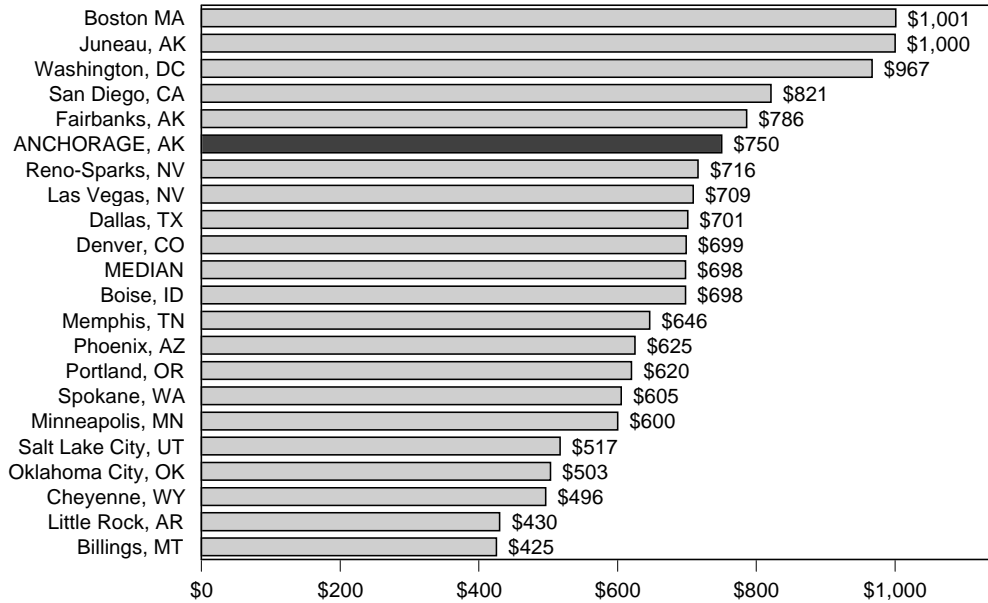
**Accra Cost of Living Index - Second Quarter - 1996**  
**Comparison of Anchorage & Selected U.S. Cities**

LOCATION Index % Weight	Apt. Rent	Home Price	Mo.Cost Energy	Phone Cost	Gas (/Gal.)	Hosp. Room	Doctor Visit	Dental Proc.	Man's Haircut	Man's Jeans
<b>ANCHORAGE, AK</b>	\$750	\$186,061	\$114	\$14.43	\$1.26	\$684	\$73	\$114	\$13.19	\$33.78
Fairbanks, AK	\$786	\$175,088	\$164	\$17.53	\$1.32	\$503	\$76	\$120	\$13.25	\$32.78
Juneau, AK	\$1,000	\$200,900	\$187	\$14.86	\$1.33	\$400	\$60	\$133	\$14.25	\$32.63
Kodiak, AK	\$1,050	\$195,000	\$186	\$21.71	\$1.59	\$400	\$65	\$133	\$10.50	\$38.09
Birmingham, AL	\$556	\$129,750	\$101	\$24.02	\$1.17	\$436	\$43	\$53	\$9.33	\$39.59
Phoenix, AZ	\$625	\$126,566	\$116	\$19.03	\$1.34	\$472	\$50	\$69	\$8.74	\$31.49
Little Rock, AR	\$430	\$93,875	\$106	\$23.63	\$1.19	\$222	\$35	\$39	\$9.00	\$26.00
Bakersfield, CA	\$553	\$120,145	\$140	\$15.35	\$1.29	\$516	\$46	\$69	\$7.70	\$33.39
Los Angeles-Long Beach, CA	\$720	\$170,210	\$119	\$17.58	\$1.35	\$632	\$50	\$59	\$9.80	\$33.59
San Diego, CA	\$821	\$204,951	\$107	\$15.64	\$1.39	\$614	\$49	\$69	\$8.00	\$30.19
Colorado Springs, CO	\$682	\$158,313	\$67	\$20.18	\$1.26	\$543	\$61	\$66	\$8.50	\$29.99
Denver, CO	\$699	\$154,868	\$71	\$20.51	\$1.26	\$484	\$59	\$69	\$8.58	\$30.82
Washington, DC	\$967	\$210,507	\$95	\$20.15	\$1.23	\$398	\$57	\$66	\$9.99	\$36.79
Jacksonville, FL	\$671	\$103,333	\$114	\$16.10	\$1.33	\$332	\$53	\$53	\$7.86	\$32.19
Boise, ID	\$698	\$135,219	\$77	\$16.78	\$1.23	\$448	\$50	\$69	\$8.50	\$33.38
Indianapolis, IN	\$578	\$119,625	\$93	\$19.66	\$1.23	\$374	\$40	\$57	\$9.40	\$31.99
Louisville, KY	\$506	\$108,400	\$88	\$25.31	\$1.15	\$345	\$47	\$47	\$7.40	\$34.59
New Orleans, LA	\$535	\$105,335	\$140	\$23.23	\$1.16	\$366	\$38	\$41	\$8.80	\$35.59
Baltimore, MD	\$505	\$135,968	\$115	\$22.01	\$1.23	\$500	\$41	\$53	\$6.30	\$34.19
Boston MA	\$1,001	\$243,800	\$144	\$22.77	\$1.24	\$619	\$63	\$72	\$9.70	\$35.19
Lansing, MI	\$590	\$164,083	\$75	\$18.00	\$1.28	\$463	\$41	\$66	\$9.62	\$34.67
Minneapolis, MN	\$600	\$124,463	\$100	\$22.28	\$1.27	\$537	\$51	\$66	\$8.79	\$27.99
Jackson, MS	\$548	\$109,664	\$112	\$28.26	\$1.17	\$225	\$43	\$48	\$8.09	\$34.19
Kansas City, MO-KS	\$638	\$114,816	\$97	\$17.73	\$1.17	\$515	\$53	\$58	\$9.20	\$27.74
Billings, MT	\$425	\$142,000	\$82	\$21.31	\$1.34	\$414	\$46	\$61	\$8.80	\$34.59
Omaha, NE	\$487	\$125,050	\$85	\$21.02	\$1.28	\$303	\$37	\$58	\$9.20	\$31.39
Las Vegas, NV	\$709	\$135,045	\$81	\$10.86	\$1.34	\$342	\$49	\$86	\$8.80	\$30.19
Reno-Sparks, NV	\$716	\$170,462	\$105	\$13.58	\$1.47	\$546	\$42	\$71	\$9.59	\$38.40
Albany, NY	\$660	\$145,000	\$135	\$30.25	\$1.26	\$334	\$53	\$61	\$9.30	\$35.99
New York (Manhattan), NY	\$2,740	\$545,000	\$186	\$24.06	\$1.41	\$1,284	\$95	\$95	\$16.60	\$39.69
Charlotte, NC	\$486	\$131,600	\$108	\$17.51	\$1.20	\$349	\$48	\$62	\$9.00	\$33.58
Oklahoma City, OK	\$503	\$98,965	\$125	\$20.58	\$1.17	\$266	\$45	\$59	\$7.40	\$27.66
Portland, OR	\$620	\$160,500	\$79	\$23.34	\$1.39	\$485	\$54	\$71	\$9.60	\$31.79
Philadelphia, PA	\$721	\$191,990	\$224	\$16.59	\$1.27	\$451	\$41	\$55	\$10.99	\$34.75
Columbia, SC	\$554	\$116,116	\$113	\$23.05	\$1.17	\$370	\$39	\$49	\$9.30	\$30.45
Sioux Falls, SD	\$595	\$114,950	\$92	\$22.99	\$1.26	\$387	\$50	\$57	\$9.70	\$32.39
Memphis, TN	\$646	\$119,216	\$76	\$20.37	\$1.30	\$270	\$48	\$53	\$9.50	\$31.80
Dallas, TX	\$701	\$114,001	\$105	\$16.33	\$1.23	\$437	\$47	\$63	\$8.89	\$31.87
Houston, TX	\$624	\$108,863	\$103	\$17.52	\$1.24	\$396	\$48	\$58	\$9.35	\$28.28
Provo-Orem, UT	\$524	\$155,833	\$87	\$17.86	\$1.19	\$753	\$47	\$56	\$8.40	\$34.24
Salt Lake City, UT	\$517	\$124,840	\$89	\$18.77	\$1.34	\$542	\$42	\$58	\$9.60	\$28.39
Spokane, WA	\$605	\$167,688	\$60	\$15.94	\$1.37	\$508	\$48	\$82	\$8.40	\$33.79
Tacoma, WA	\$602	\$131,500	\$74	\$20.08	\$1.31	\$417	\$58	\$107	\$9.00	\$38.59
Charleston, WV	\$517	\$144,560	\$106	\$29.93	\$1.28	\$275	\$47	\$51	\$7.00	\$32.79
Cheyenne, WY	\$496	\$121,712	\$81	\$20.82	\$1.16	\$430	\$41	\$58	\$8.70	\$31.99
<b>MEDIAN</b>	\$620	\$135,045	\$105	\$20.15	\$1.26	\$436	\$48	\$61	\$9.00	\$32.79
<b>MEAN</b>	\$688	\$152,352	\$109	\$19.99	\$1.28	\$457	\$50	\$68	\$9.37	\$32.97

Source: ACCRA Cost of Living Index. Anchorage data compiled by MOA Community Planning & Development Dept. Notes:  
 Apartment rent is for a 2-bedroom unfurn. (about 900 sq. ft.), w ithout utilities. Home price is for an 1,800 sq. ft. w ith 3 bedrooms,  
 2 1/2 baths, family room & a 2-car garage. Dental procedures are for a cleaning and visual exam (no X-rays). (Revised 3/26/97)

## Two-Bedroom Apartment Rent

### Anchorage & Selected U.S. Cities - 2nd Quarter -1996

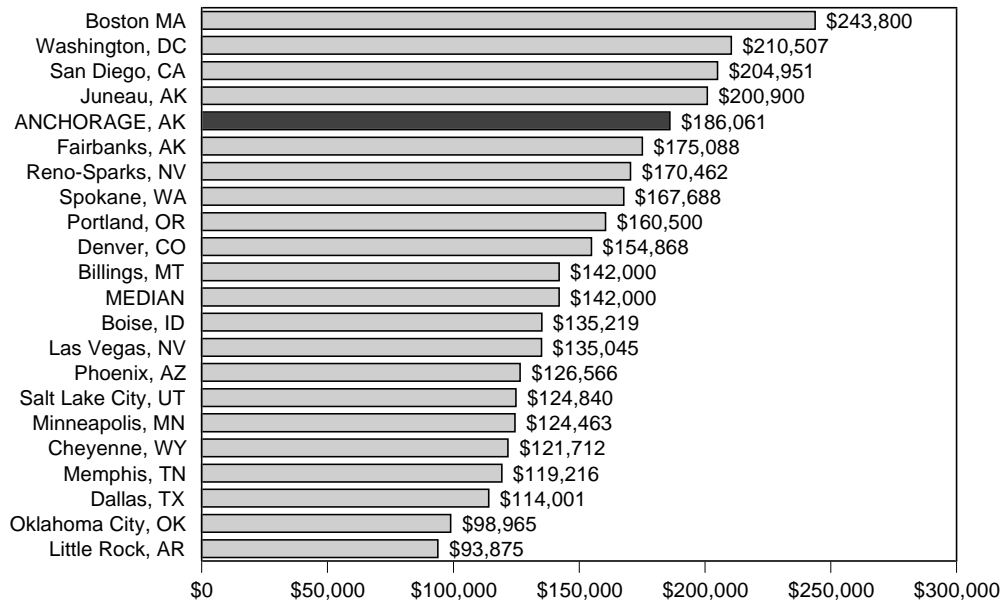


Source: ACCRA Cost of Living Index, Louisville, Kentucky. (Revised 3/26/97)

97 ACCRA #5

## Three-Bedroom Home

### Anchorage & Selected U.S. Cities - 2nd Quarter -1996



Source: ACCRA Cost of Living Index, Louisville, Kentucky. (Revised 3/26/97)

97 ACCRA #6

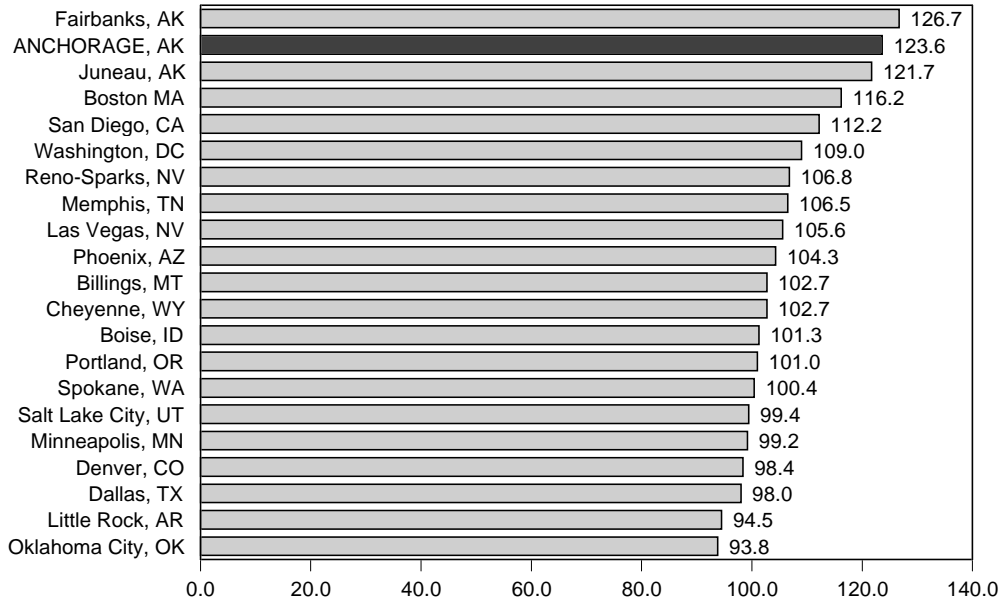
**Accra Cost of Living Index - Second Quarter - 1996  
Comparison of Anchorage & Selected U.S. Cities**

<b>LOCATION</b>	<b>T-Bone</b>	<b>Milk</b>	<b>Bananas</b>	<b>Canned Peas</b>	<b>Frozen O.J.</b>	<b>Soft Drink</b>	<b>Ham-burger</b>	<b>Pizza</b>	<b>Beer</b>	<b>Wine</b>
<b>Index % Weight</b>	<b>Steak</b>									
<b>ANCHORAGE, AK</b>	\$6.42	\$2.20	\$0.96	\$0.73	\$1.22	\$1.99	\$2.46	\$10.99	\$4.65	\$5.99
Fairbanks, AK	\$5.81	\$2.02	\$0.99	\$0.72	\$1.34	\$1.73	\$2.30	\$10.99	\$5.17	\$6.19
Juneau, AK	\$5.87	\$2.00	\$0.81	\$0.82	\$1.66	\$1.90	\$2.60	\$10.99	\$5.26	\$6.05
Kodiak, AK	\$6.09	\$2.49	\$0.79	\$0.95	\$2.24	\$2.49	\$2.59	\$11.99	\$5.29	\$6.84
Birmingham, AL	\$5.64	\$1.58	\$0.46	\$0.56	\$1.25	\$1.39	\$1.88	\$7.99	\$3.97	\$5.39
Phoenix, AZ	\$4.73	\$1.67	\$0.59	\$0.60	\$1.43	\$1.30	\$1.98	\$8.99	\$4.21	\$4.43
Little Rock, AR	\$5.73	\$1.41	\$0.45	\$0.66	\$1.41	\$1.05	\$1.00	\$6.59	\$3.71	\$4.93
Bakersfield, CA	\$5.77	\$1.54	\$0.57	\$0.59	\$1.37	\$1.03	\$1.89	\$11.00	\$3.95	\$4.13
Los Angeles-Long Beach, CA	\$6.26	\$1.86	\$0.54	\$0.64	\$1.36	\$0.91	\$2.00	\$10.55	\$3.99	\$4.34
San Diego, CA	\$5.74	\$1.92	\$0.55	\$0.62	\$1.53	\$0.97	\$1.99	\$9.99	\$4.08	\$4.39
Colorado Springs, CO	\$5.05	\$1.82	\$0.53	\$0.71	\$1.47	\$1.02	\$1.99	\$7.99	\$4.38	\$4.08
Denver, CO	\$5.18	\$1.60	\$0.63	\$0.72	\$1.47	\$1.06	\$2.05	\$7.99	\$4.14	\$4.47
Washington, DC	\$5.91	\$1.46	\$0.54	\$0.70	\$1.35	\$1.16	\$1.98	\$9.77	\$4.25	\$5.76
Jacksonville, FL	\$5.39	\$1.55	\$0.41	\$0.50	\$1.29	\$1.09	\$1.96	\$7.99	\$4.09	\$5.09
Boise, ID	\$4.73	\$1.35	\$0.56	\$0.66	\$1.19	\$1.33	\$1.99	\$10.75	\$4.25	\$4.95
Indianapolis, IN	\$5.52	\$1.60	\$0.39	\$0.59	\$1.27	\$1.16	\$1.88	\$7.99	\$3.83	\$4.30
Louisville, KY	\$5.95	\$1.38	\$0.55	\$0.55	\$1.25	\$1.19	\$1.75	\$6.69	\$4.07	\$6.05
New Orleans, LA	\$6.85	\$1.33	\$0.63	\$0.60	\$1.27	\$1.07	\$2.00	\$10.69	\$3.70	\$4.66
Baltimore, MD	\$5.79	\$1.48	\$0.49	\$0.59	\$1.39	\$0.93	\$2.06	\$7.89	\$4.08	\$5.29
Boston MA	\$6.53	\$1.37	\$0.72	\$0.54	\$1.15	\$1.17	\$2.11	\$8.99	\$5.11	\$6.21
Lansing, MI	\$5.54	\$1.59	\$0.44	\$0.57	\$1.52	\$1.22	\$1.89	\$9.99	\$4.29	\$5.87
Minneapolis, MN	\$6.22	\$1.46	\$0.47	\$0.57	\$1.23	\$1.21	\$1.89	\$7.59	\$3.99	\$5.21
Jackson, MS	\$5.51	\$1.43	\$0.48	\$0.66	\$1.37	\$0.99	\$1.93	\$7.99	\$3.71	\$6.10
Kansas City,MO-KS	\$5.87	\$1.39	\$0.33	\$0.64	\$1.28	\$1.00	\$1.97	\$8.40	\$4.28	\$5.15
Billings, MT	\$5.49	\$1.48	\$0.52	\$0.67	\$1.38	\$1.28	\$1.94	\$9.44	\$4.50	\$5.09
Omaha, NE	\$5.36	\$1.30	\$0.43	\$0.65	\$1.38	\$1.07	\$1.94	\$8.49	\$4.21	\$4.66
Las Vegas, NV	\$5.91	\$1.54	\$0.53	\$0.60	\$1.26	\$0.99	\$1.86	\$9.50	\$4.47	\$4.64
Reno-Sparks, NV	\$5.59	\$1.39	\$0.49	\$0.67	\$1.45	\$1.29	\$1.97	\$10.00	\$4.45	\$4.41
Albany, NY	\$6.29	\$1.21	\$0.50	\$0.49	\$1.13	\$1.07	\$2.09	\$9.35	\$4.15	\$5.43
New York (Manhattan), NY	\$10.19	\$1.77	\$0.79	\$0.89	\$1.89	\$1.57	\$2.75	\$9.62	\$4.63	\$6.29
Charlotte, NC	\$5.55	\$1.42	\$0.57	\$0.53	\$1.15	\$1.09	\$1.89	\$8.79	\$3.73	\$4.74
Oklahoma City, OK	\$4.90	\$1.34	\$0.46	\$0.62	\$1.24	\$1.13	\$1.79	\$9.69	\$4.17	\$6.29
Portland, OR	\$4.99	\$1.44	\$0.60	\$0.78	\$1.20	\$1.19	\$1.97	\$10.59	\$3.60	\$4.81
Philadelphia, PA	\$5.94	\$1.29	\$0.76	\$0.62	\$1.50	\$1.31	\$1.96	\$7.96	\$5.64	\$5.99
Columbia, SC	\$4.95	\$1.40	\$0.44	\$0.60	\$1.30	\$1.05	\$1.87	\$8.71	\$4.11	\$5.25
Sioux Falls, SD	\$5.11	\$1.39	\$0.30	\$0.64	\$1.47	\$1.15	\$1.89	\$8.29	\$3.93	\$5.31
Memphis, TN	\$5.59	\$1.47	\$0.59	\$0.65	\$1.55	\$1.03	\$1.91	\$7.99	\$4.07	\$5.31
Dallas, TX	\$6.25	\$1.51	\$0.39	\$0.71	\$1.38	\$1.25	\$1.95	\$8.71	\$4.69	\$5.43
Houston, TX	\$5.47	\$1.40	\$0.45	\$0.56	\$1.26	\$0.99	\$1.91	\$8.11	\$4.32	\$5.38
Provo-Orem, UT	\$4.37	\$1.37	\$0.34	\$0.60	\$1.18	\$1.09	\$1.99	\$9.00	\$4.24	\$5.45
Salt Lake City, UT	\$4.71	\$1.48	\$0.53	\$0.69	\$1.35	\$1.07	\$1.99	\$9.00	\$3.85	\$5.45
Spokane, WA	\$5.19	\$1.58	\$0.62	\$0.65	\$1.36	\$1.00	\$1.89	\$10.75	\$3.58	\$4.19
Tacoma, WA	\$5.23	\$1.47	\$0.57	\$0.67	\$1.23	\$1.11	\$1.90	\$10.50	\$3.74	\$4.35
Charleston, WV	\$6.39	\$1.39	\$0.33	\$0.66	\$1.39	\$1.13	\$1.87	\$6.99	\$4.49	\$5.19
Cheyenne, WY	\$5.15	\$1.42	\$0.67	\$0.68	\$1.36	\$1.39	\$2.09	\$9.50	\$4.41	\$5.31
<b>MEDIAN</b>	\$5.59	\$1.47	\$0.53	\$0.64	\$1.36	\$1.13	\$1.96	\$9.00	\$4.17	\$5.25
<b>MEAN</b>	\$5.70	\$1.55	\$0.55	\$0.65	\$1.37	\$1.21	\$1.99	\$9.15	\$4.25	\$5.22

Source: ACCRA Cost of Living Index. Anchorage data compiled by MOA Community Planning Dept.(Revised 3/26/97)

# ACCRA Cost of Living Index - Grocery

## Anchorage & Selected U.S. Cities - 2nd Quarter -1996

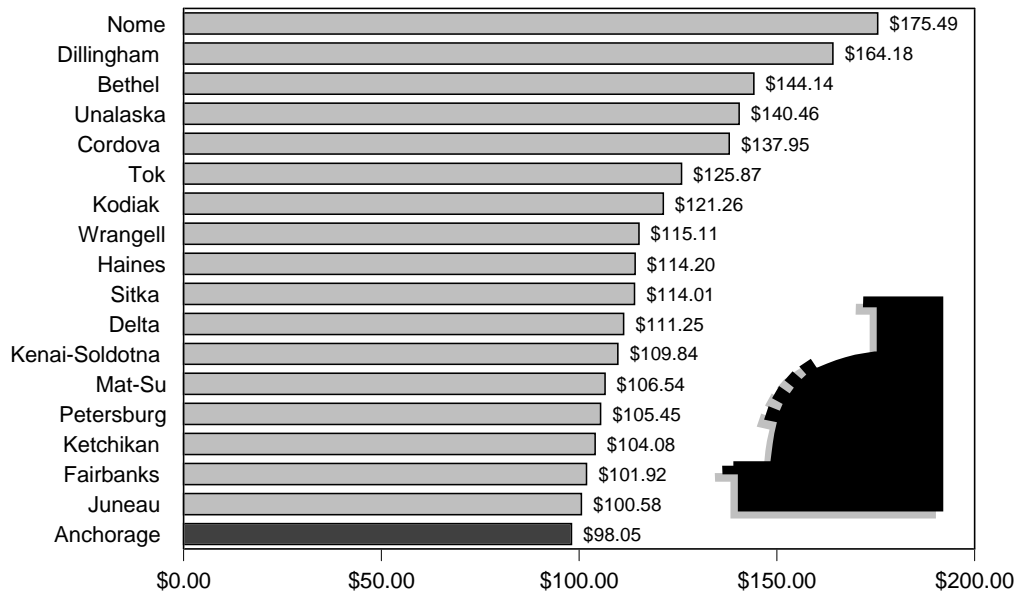


Source: ACCRA Cost of Living Index, Louisville, Kentucky. (Revised 3/26/97)

97 ACCRA #2

# Cost of Food at Home for a Week\*

## Anchorage & Alaska Cities - December 1996



Source: Alaska Cooperative Extension, University of Alaska Fairbanks. \*For a family of four with two elementary children. (Revised 4/1/97)

Consumer Price Index #22

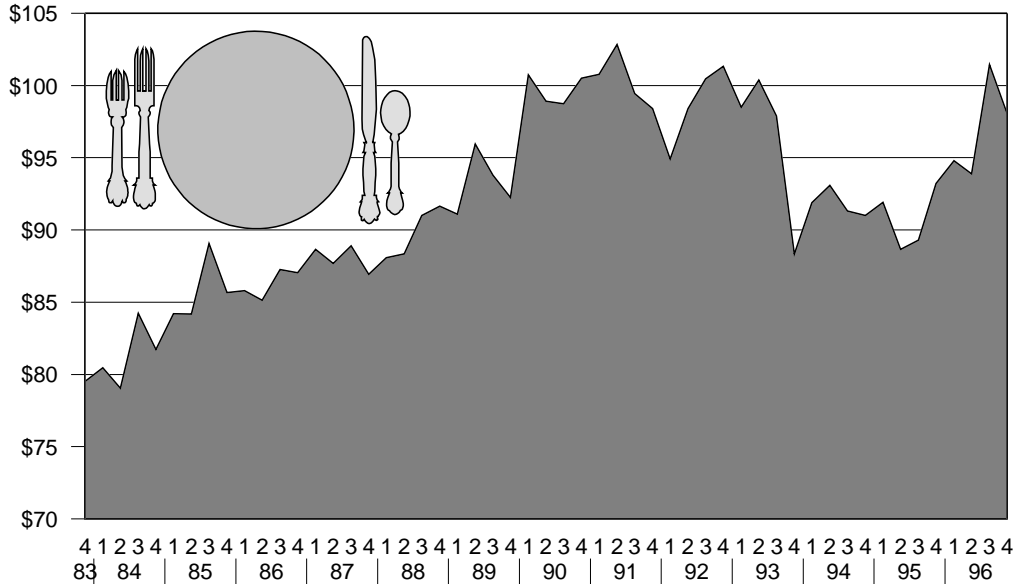
**Food Prices - Cost of Food at Home for a Week - Major Alaska Communities - December 1996**

	<b>Anch- orage</b>	<b>Bethel</b>	<b>Cordova</b>	<b>Delta</b>	<b>Dilling- ham</b>	<b>Fair- banks</b>	<b>Juneau</b>	<b>Kenai- Soldotna</b>	<b>Ketch- ikan</b>	<b>Kodiak</b>	<b>Mat-Su</b>	<b>S E</b>
Sales Tax (In percent)	0.0%	5.0%	6.0%	0.0%	5.0%	0.0%	4.0%	5.0%	5.5%	6.0%	2.5%	5
Percent of Food Unavailable	0.0%	0.0%	3.0%	4.0%	1.0%	0.0%	0.0%	0.0%	0.0%	1.0%	0.0%	C
Family of 2 (20-50 years)	57.66	84.77	81.12	65.42	96.55	59.93	59.15	64.59	61.2	71.31	62.65	6
Family of 2 (51 & older)	55.46	81.53	78.03	62.93	92.86	57.65	56.89	62.13	58.87	68.58	60.26	6
Family of 4, children 1-5 years	83.34	122.51	117.25	94.56	139.54	86.63	85.49	93.36	88.46	103.06	90.55	
Family of 4, children 6-11 years	98.05	144.14	137.95	111.3	164.18	101.9	100.58	109.84	104.1	121.26	106.54	
Children 1-2 years	14.79	21.73	20.81	16.78	24.76	15.37	15.17	16.57	15.7	18.29	16.07	1
Children 3-5 years	16.13	23.71	22.69	18.3	27.01	16.77	16.55	18.07	17.12	19.95	17.53	1
Children 6-8 years	21.37	31.42	30.07	24.25	35.78	22.21	21.92	23.94	22.68	26.43	23.22	2
Children 9-11 years	24.26	35.67	34.13	27.53	40.62	25.22	24.89	27.18	25.75	30	26.36	2
Females 12-19 years	23.63	34.73	33.24	26.81	39.56	24.56	24.24	26.47	25.08	29.22	25.67	2
Females 20-50 years	24.48	35.99	34.45	27.78	40.99	25.45	25.12	27.43	25.99	30.28	26.6	2
Females, 51 years and over	23.79	34.98	33.48	27	39.84	24.73	24.41	26.66	25.26	29.43	25.86	2
Males, 12-14 years	27.38	40.25	38.52	31.06	45.83	28.46	28.08	30.67	29.06	33.85	29.75	3
Males, 15-19 years	28.18	41.42	39.64	31.97	47.18	29.29	28.91	31.57	29.91	34.85	30.62	3
Males, 20-50 years	27.93	41.07	39.3	31.7	46.78	29.04	28.66	31.29	29.65	34.55	30.35	3
Males, 51 years & older	26.63	39.14	37.47	30.21	44.58	27.68	27.32	29.83	28.27	32.93	28.93	3
% Anchorage Dec 1996	100	147	141	113	167	104	103	112	106	124	109	
% Anchorage Dec 1995	105	151	150	121	169	105	107	114	106	128	114	
% Anchorage Dec 1994	108	149	138	129	170	99	114	110	109	130	120	
% Anchorage Dec 1993	111	162	159	131	177	105	113	122	112	140	130	
Electricity, 1000 Kwh	85	244	195	89	157	83	103	111	94	155	109	
Electricity, paid by State		60	13		55							
Heating oil, 55 gal	56	80	99	98	95	62	85		66	69	74	
Gas, 55 gal unleaded auto	71	97	108	82	102	76	76	75	85	91	74	
Lumber, 2X4X8'	2.89	5.10	4.95	2.50	5.23	4.60	3.44	3.86	3.15	4.12	3.58	
Propane, 288 gal	479	1,104	720	547	1,072	490	528		552	720	461	
Propane, 100 lb refill	42	105	59	41	89	40	46	41	48	62	37	
Sewer, monthly fee	21.93	18.90	27.60		32.50	2.74	33.80		26.60	32.20	18.42	2
Sewer, 1000 gal		21.00				4.51						
Water, monthly fee	25.95	60.38	23.00		26.36	3.70	19.76		24.00	25.30	16.70	1
Water, 1000 gal		23.06				4.11						
Sewer and Water, monthly	47.88	79.28	50.60		58.86	6.44	56.47	41.29	50.60	57.50	35.12	3

Source: University of Alaska Fairbanks, Alaska Cooperative Extension. (Revised 4/1/97)

## Cost of Food at Home for a Week\*

Anchorage - 1983-96, By Quarter

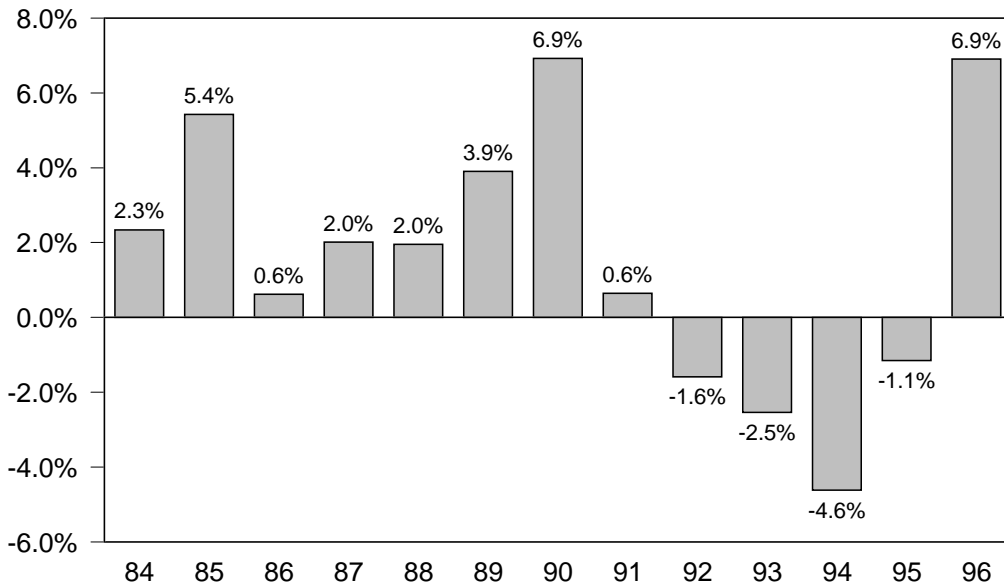


Source: Anchorage survey by Alaska Cooperative Extension, University of Alaska Fairbanks. \*For a family of four with two elementary children. (Revised 3/26/97)

Consumer Price Index #13

## Cost of Food at Home for a Week\*

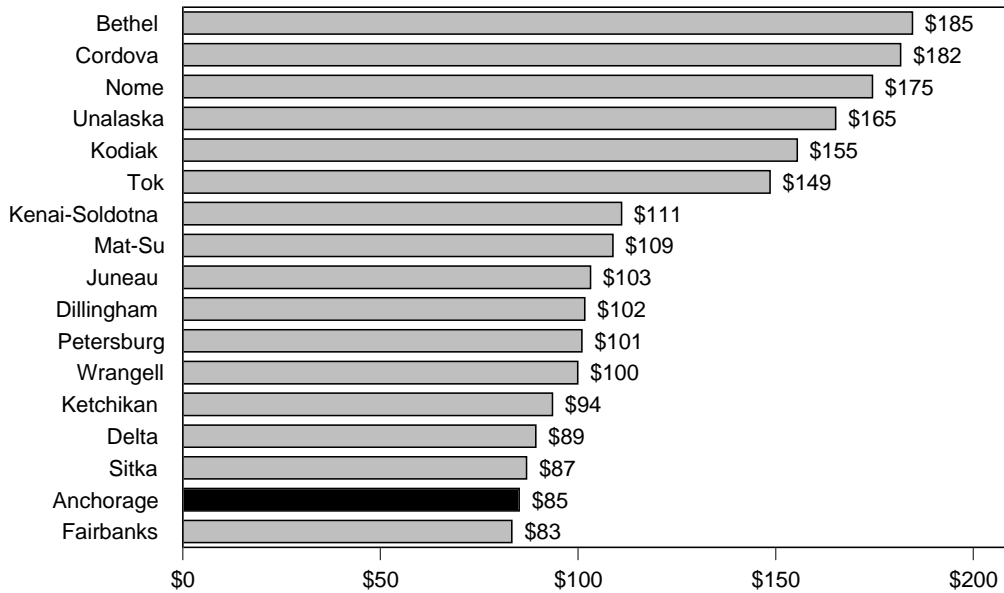
Anchorage - Annual % Change from Prior Year 1984-96



Source: Anchorage survey by Alaska Cooperative Extension, University of Alaska Fairbanks. \*For a family of four with two elementary children. (Revised 3/26/97)

Consumer Price Index #15

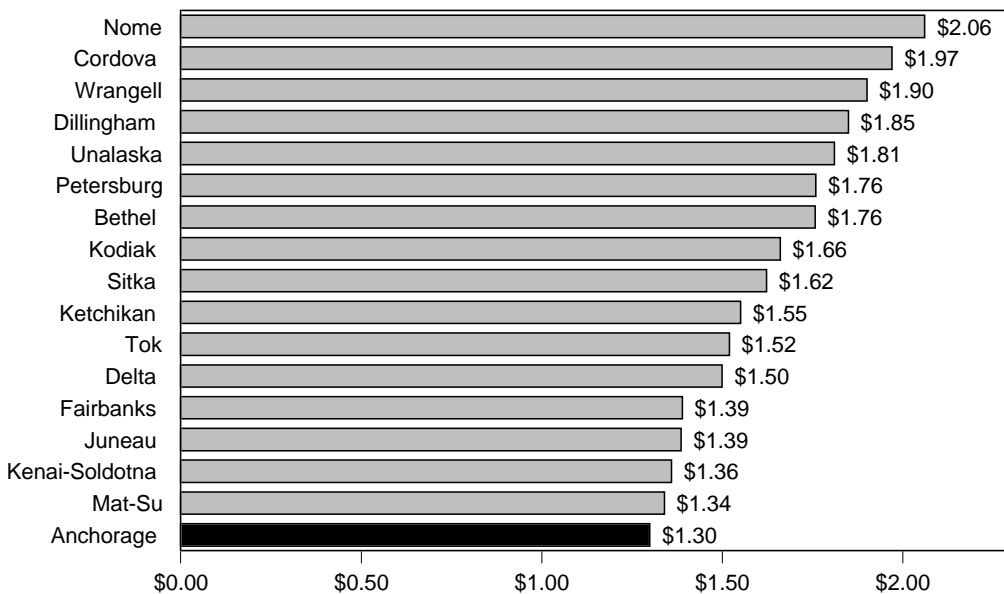
## Cost of 1,000 KWH of Electricity Anchorage & Alaska Cities - December 1996



Source: Alaska Cooperative Extension, University of Alaska Fairbanks. \*Actual cost for electricity in these communities is higher, but a portion of the cost is paid for by the state. (Revised 4/1/97)

Consumer Price Index #24

## Cost of Unleaded Auto Gas\* Anchorage & Alaska Cities - December 1996



Source: Alaska Cooperative Extension, University of Alaska Fairbanks. \*Price based on purchase of 55 gallons. (Revised 4/1/97)

Consumer Price Index #25