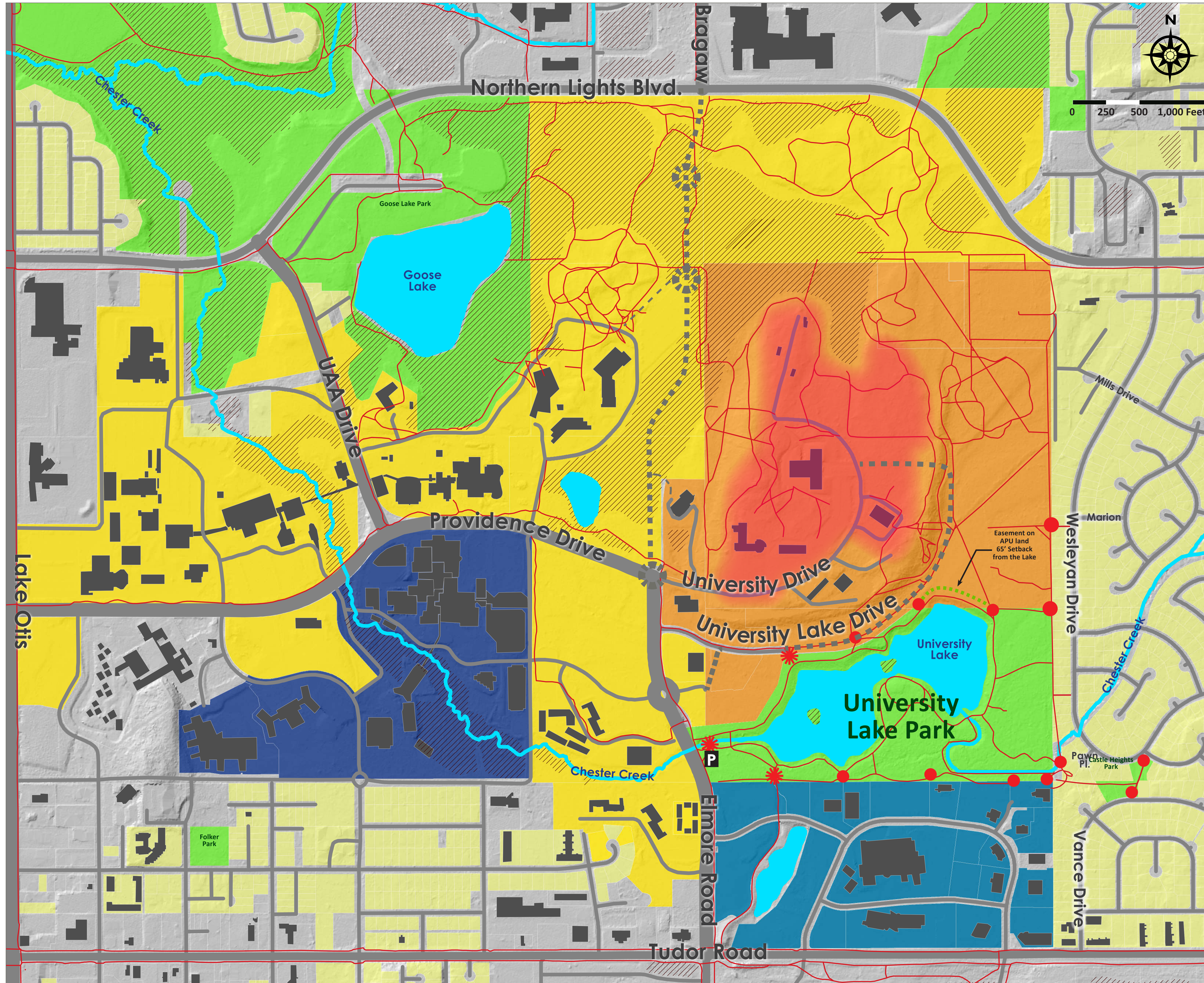


# University Lake Park

# Context Map



## Water Resources

- Lake/Pond
- Waterway
- Wetland

## Land Use/Ownership

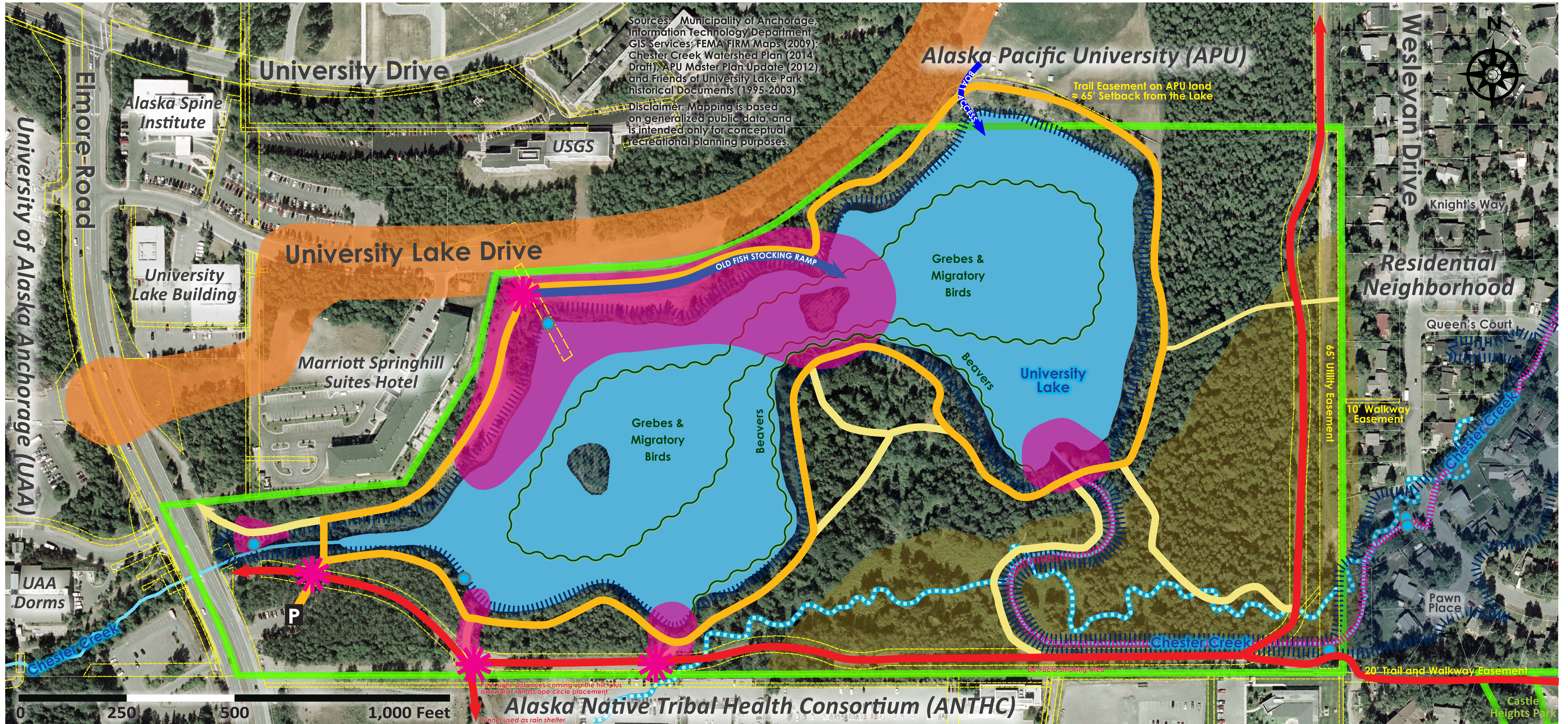
- Municipal Parkland
- Residential
- Alaska Pacific University (APU)
- APU Institutional Core  
(July 2011, proposed U-MED Plan APU land designations)
- University of Alaska Anchorage Campus
- Alaska Native Health Campus
- Providence Alaska Medical Campus
- Mixed-Use/Other

## Park Access & Circulation

- Trail/Path (Official and User-Created)
- Major Entry/Gateway
- Entry Point
- Parking
- Planned Future Roadway/Roundabout

# University Lake Park

# Site Inventory and Analysis Map



## LEGEND

- |  |   |  |
|--|---|--|
| <p><b>Site Context</b></p> <ul style="list-style-type: none"> <li><span style="border: 1px solid green; display: inline-block; width: 15px; height: 10px; margin-right: 5px;"></span> Municipal Parkland</li> <li><span style="border: 1px solid black; display: inline-block; width: 15px; height: 10px; margin-right: 5px;"></span> Parcel Boundaries (Private, Institutional)</li> <li><span style="background-color: orange; display: inline-block; width: 15px; height: 10px; margin-right: 5px;"></span> University Lake Drive (planned corridor)</li> <li><span style="border: 1px dashed yellow; display: inline-block; width: 15px; height: 10px; margin-right: 5px;"></span> Platted Easement</li> </ul> | <p><b>Natural Characteristics</b></p> <ul style="list-style-type: none"> <li><span style="background-color: blue; display: inline-block; width: 15px; height: 10px; margin-right: 5px;"></span> University Lake (Historical gravel pit, formerly "Behm Lake")</li> <li><span style="border-bottom: 1px dashed blue; display: inline-block; width: 15px; margin-right: 5px;"></span> Pre-1980 Chester Creek Channel</li> <li><span style="border-bottom: 1px solid blue; display: inline-block; width: 15px; margin-right: 5px;"></span> Current Chester Creek Channel (Chester Creek was diverted to flow into an old gravel pit and create University Lake.)</li> <li><span style="border: 1px solid black; display: inline-block; width: 15px; height: 10px; margin-right: 5px;"></span> Wetlands</li> <li><span style="border-bottom: 1px dashed red; display: inline-block; width: 15px; margin-right: 5px;"></span> 100-Year Flood Zone (2009 FEMA)</li> <li><span style="border-bottom: 1px solid blue; display: inline-block; width: 15px; margin-right: 5px;"></span> Unstable Channel, Poor Habitat (No riffle/pool complex suitable for fish, along with bank erosion, sloughing, and lake sediment deposits.)</li> </ul> | <p><b>Infrastructure &amp; Circulation</b></p> <ul style="list-style-type: none"> <li><span style="background-color: brown; display: inline-block; width: 15px; height: 10px; margin-right: 5px;"></span> Silty Soils</li> <li><span style="border: 1px solid blue; border-radius: 50%; display: inline-block; width: 10px; height: 10px; margin-right: 5px;"></span> Storm Drain (Stormwater Outfall)</li> <li><span style="border-bottom: 1px solid green; display: inline-block; width: 15px; margin-right: 5px;"></span> Wildlife Concerns</li> <li><span style="border: 1px solid black; padding: 2px 5px; margin-right: 5px;">P</span> Parking/Trailhead</li> <li><span style="border-bottom: 1px solid red; display: inline-block; width: 15px; margin-right: 5px;"></span> Multi-Use Path (Leash Required)</li> <li><span style="border-bottom: 1px solid yellow; display: inline-block; width: 15px; margin-right: 5px;"></span> Soft-Tread Trails (Off-Leash Allowed)</li> <li><span style="border-bottom: 1px solid blue; display: inline-block; width: 15px; margin-right: 5px;"></span> Boat Access Point</li> <li><span style="color: magenta; font-size: 2em;">✱</span> Circulation Bottlenecks</li> <li><span style="background-color: magenta; border-radius: 50%; display: inline-block; width: 15px; height: 15px; margin-right: 5px;"></span> Dog "Play Zones" - High Erosion Areas (major dog socialization, toy throwing, and water access areas)</li> </ul> |
|--|---|--|