

Requirements Levied by Conservation Easement

Limited Development Areas

GOALS

- Support on-site activities
- Public access

ACCEPTABLE IMPROVEMENTS (SUBJECT TO REVIEW)

- Utility and site improvements
- Interpretive signs that pertain to conservation and history
- Rest rooms, gazebo and kiosks
- Parking area, with sufficient security accessories
- Access road, gate, fences

Restricted Use Area

GOALS

- Keep large connected habitat intact
- Protect scenic vista in and outside of the site
- Facilitate activities that promote overall conservation goals

ACCEPTABLE IMPROVEMENTS (SUBJECT TO REVIEW)

- Recreational & open-space activities
- Public access: emergency vehicle, trails and wildlife watching
- Continue existing enhancements
- Site improvements and utilities as necessary

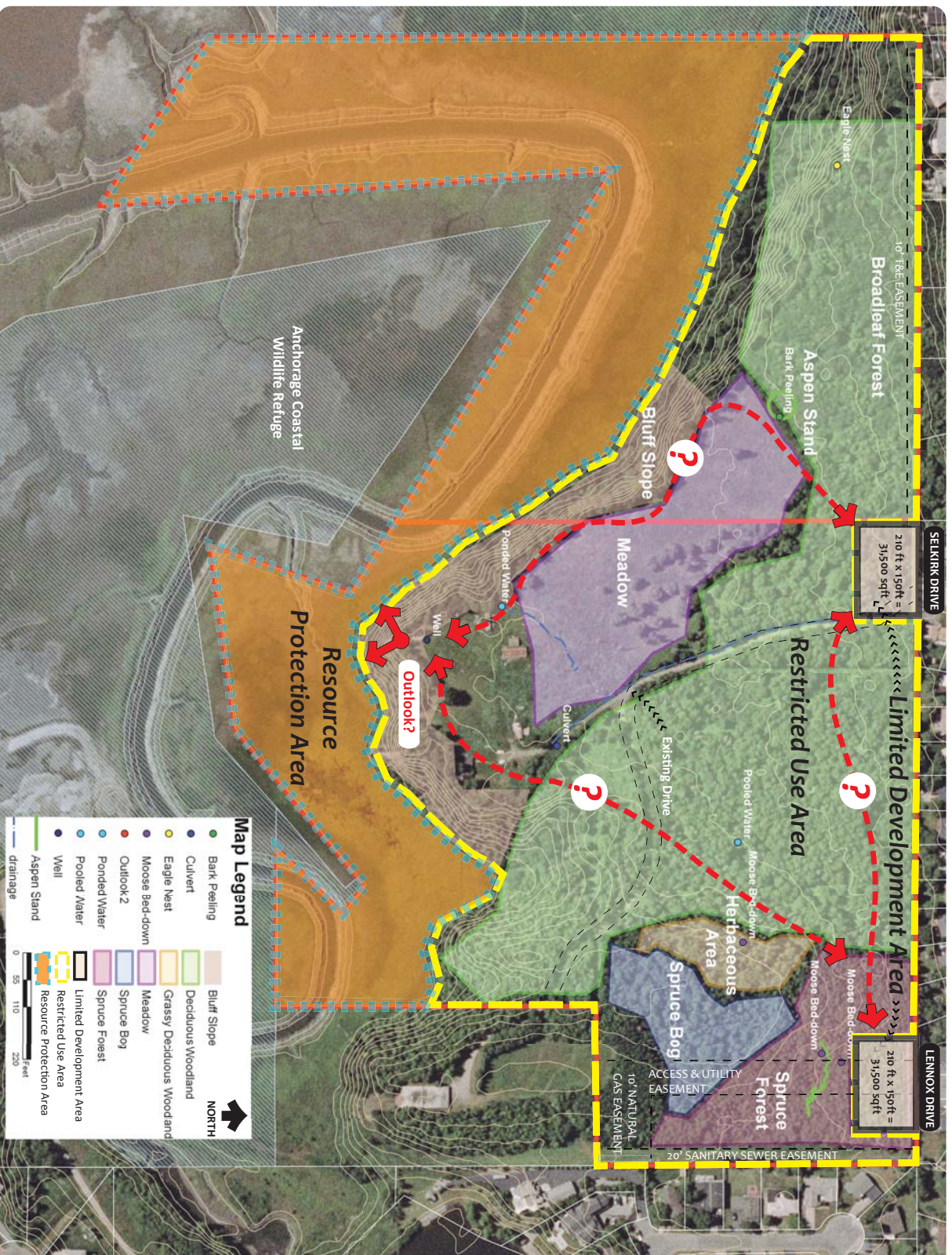
Resource Protection Area

GOALS

- Protect natural resources & water quality
- Promote & maintain ecological community
- Keep hydrologic functions in undisturbed state

ACCEPTABLE IMPROVEMENTS (SUBJECT TO REVIEW)

- Habitat enhancement: native plantings, wetland restoration
- Porous trails/boardwalks if necessary to promote conservation
- Regulatory signs and fences if necessary



Campbell Creek Estuary Master Plan

What are your thoughts?

Please provide your input for the Campbell Creek Estuary Master Plan. Findings will be used in the master plan to help guide the development of the site in a manner that is sensitive to its location.

√ Trails/Outlook Points

√ Access/Parking

√ Habitat/Conservation

√ Other Desired Outcomes

Return this form today or send to
USKH by June 8th:

USKH

Brianne Keifer

2515 Street, Anchorage, AK 99503

bkeifer@uskh.com

907-343-5252

Stay involved and find more
info @:

[www.muni.org/Departments/
parks/pages/CampbellCreek
EstuaryMP.aspx](http://www.muni.org/Departments/parks/pages/CampbellCreekEstuaryMP.aspx)

Thank you for your time and input!