



Municipality of Anchorage

Ethan A. Berkowitz, Mayor

- Real Estate Department -

DATE: September 28, 2018

TO: Michelle McNulty, Planning Department Director

FROM: Robin E. Ward, Real Estate Department Director *REW*

SUBJECT: ASD Student Transportation Facility Relocation
Public Facility Site Selection Study

OVERVIEW

The Municipality of Anchorage has entered into an agreement with a private group to re-develop the north 20 acres of the Tudor Municipal Campus at Tudor and Elmore Roads. The majority of the property is able to be re-developed without much difficulty, however, the existing ASD Student Transportation Facility has been located on this property for almost 50 years and will require relocation to be able to fully develop the entire 20 acres. Per 21.03.140, a Public Facility Site Selection Process has been undertaken to determine potential sites for relocation within the ASD designated service area for these buses. The report has been completed and is attached.

A pre-application meeting was held on August 29, 2018.

The Real Estate Department is requesting a public hearing at the Planning and Zoning Commission, which is the next step in this process.

2018-0113
P2C 12/10/18



SITE SELECTION STUDY

Municipality of Anchorage
Anchorage School District
Student Transportation Maintenance Facility

September 2018

Table of Contents

1.0 INTRODUCTION	3
1.1 Background	3
1.2 New Site Criteria	3
1.3 Site Selection Process	5
1.4 Sites Selected for Further Analysis.....	5
1.5 Land Use Planning Considerations.....	6
2.0 SITE EVALUTATIONS.....	7
2.1 Site 13 Evaluation	7
2.1.1 General Information/Size.....	7
2.1.2 Zoning District	7
2.1.3 Accessibility.....	8
2.1.4 Environmental Resource Sensitivity.....	8
2.1.5 Soil and Drainage	8
2.1.6 Availability of Utilities	8
2.1.7 Acquisition/Site Development Cost	9
2.1.8 Summary of Approval Criteria Outlined in AMC 21.03.140.H	9
2.2 Site 18 Evaluation	10
2.2.1 General Information/Size.....	10
2.2.2 Zoning District	10
2.2.3 Accessibility.....	11
2.2.4 Environmental Resource Sensitivity.....	11
2.2.5 Soil and Drainage	11
2.2.6 Availability of Utilities	11
2.2.7 Ownership and Acquisition Cost	12
2.2.8 Summary of Approval Criteria Outlined in AMC 21.03.140.H	12
2.3 Site 21 Evaluation	13
2.3.1 General Information/Size.....	13
2.3.2 Zoning District	14
2.3.3 Accessibility.....	14
2.3.4 Environmental Resource Sensitivity.....	14

2.3.5 Soil and Drainage	14
2.3.6 Availability of Utilities	14
2.3.7 Ownership and Acquisition Cost	15
2.3.8 Summary of Approval Criteria Outlined in AMC 21.03.140.H	15
2.4 Site 22 Evaluation	17
2.4.1 General Information/Size	17
2.4.2 Zoning District	17
2.4.3 Accessibility	17
2.4.4 Environmental Resource Sensitivity	17
2.4.5 Soil and Drainage	18
2.4.6 Availability of Utilities	18
2.4.7 Ownership and Acquisition Cost	18
2.4.8 Summary of Approval Criteria Outlined in AMC 21.03.140.H	19
2.5 Site 27 Evaluation	20
2.5.1 General Information/Size	20
2.5.2 Zoning District	21
2.5.3 Accessibility	21
2.5.4 Environmental Resource Sensitivity	21
2.5.5 Soil and Drainage	21
2.5.6 Availability of Utilities	22
2.5.7 Ownership and Acquisition Cost	22
2.5.8 Summary of Approval Criteria Outlined in AMC 21.03.140.H	23
3.0 COMPARISON AND RECOMMENDATIONS	24

1.0 INTRODUCTION

1.1 Background

The Anchorage School District (ASD) Student Transportation Facility operates on a property near the southwest corner of Tudor and Elmore Roads. This facility will need to be relocated to allow for a mixed-use development planned on the site to be developed to its highest and best potential and as identified in the recently adopted Anchorage 2040 Land Use Plan (2040 LUP). The future Tudor-Elmore Development will include the new location for the Department of Health and Human Service (DHHS) facility, as well as proposed medical office buildings, a grocery store, hotel, retail, restaurant, and residential. The mixed-use development is required to provide at least 192 dwelling units. Development of the grocery store, which has been a priority of the community for several decades, and dwelling units are dependent on the relocation of the ASD Student Transportation Facility. The facility uses a considerable amount of area and its location on the site would prevent a commercial development from having adequate access, impeding its potential to be viable.

The ASD Student Transportation Facility serves East and Bartlett High Schools, and all East-Anchorage elementary and middle schools. This facility is the only ASD Student Transportation Facility that is not privately owned. The current location is owned by the MOA and is managed by the ASD under a management agreement. The current facility occupies approximately 9.5 acres of land which includes partially covered bus parking for 124 buses with electrical hook-ups, employee parking, specialized equipment parking, snow storage, a facility with seven maintenance bays, a drive-thru wash bay, and an administrative area for staff support and operation functions. In addition, it includes three portable classroom buildings used as additional administrative space and storage, separate storage containers and bus refueling and cleaning stations.

Public buildings or facilities, such as the ASD Student Transportation Facility, are subject to a Public Facility Site Selection Study under Anchorage Municipal Code (AMC) 21.03.140. The purpose of this study is to document the analysis of alternative sites evaluated for the relocation of the ASD Student Facility and to provide the MOA with the results of this analysis and a recommendation for suitable sites for its relocation.

1.2 New Site Criteria

The goal of this site selection study is to identify sites that can be efficiently developed to accommodate the ASD Student Transportation Facility while providing a high level of efficient service for East Anchorage schools and residents. The study also considers the cost effectiveness of potential sites in terms of acquisition and development costs. The following criteria were used in the initial analysis of potential sites.

- Location
- Size
- Zoning District
- Accessibility
- Environmental Sensitivity

- Soil and Drainage
- Availability of Utilities
- Acquisition and Development Cost

These evaluation criteria are described further below.

Location- The ASD Student Transportation Facility serves schools in East Anchorage. The initial study area looked at sites from Lake Otis Parkway, east to Muldoon Road, and Debarr Road, south to Tudor Road. Due to the abundance of publicly owned land south of Tudor Road and along Dr. Martin Luther King Junior Avenue, the boundary was extended south as depicted in Figure 1, Study Area. Due to the operations of the facility, proximity to a high-capacity road, such as an arterial or greater classification in the Official Streets and Highway Plan (OSHP), is desirable to create an efficient and effective route.

Size- The size desired is based on the required area of the ASD Student Transportation Facility to function, including: bus maneuvering; maintenance and cleaning; fueling; parking; and office space for ASD support staff. The current facility covers approximately 9.5 acres. Various conceptual site layouts were prepared that show the facility could work on 8 acres, which was determined to be the minimum size parcel acceptable for a new location. Parcel shape influences functionality.

Zoning District - The ASD Student Transportation Facility is permitted as an Outdoor Storage of Vehicles and/ or Equipment associated with Community use in the Public Lands and Institutions (PLI) District. Alternatively, it is permitted in the Light Industrial (I-1) or Heavy Industrial (I-2) Districts as a storage yard. Sites that are zoned PLI, I-1, or I-2 District are preferred over those with other zoning designations. Rezoning a site would only be allowable if supported by the 2040 LUP and adopted land use plan map.

Accessibility - Accessibility considerations include the ease of ingress/egress from the property onto existing streets. Site proximity to arterial or collector roads is favored in the analysis, while use of residential streets for access is less favorable.

Environmental Resource Sensitivity- The environmental resource sensitivity criteria evaluates issues such as wetland functions and values, waterways, and upland habitats. High value wetlands and large areas of contiguous habitat are typically more cost prohibitive to develop. Sites that do not contain environmental resources are favored over sites that are encumbered.

Soil and Drainage- Soils, drainage, and groundwater characteristics are very important factors affecting development costs. In general, sites with engineered quality soils and good on-site drainage are less expensive to develop and are preferred.

Availability of Utilities- The ASD Student Transportation Facility requires water, sewer, storm drain, electric, gas, and telecommunications connection services. Sites with adequate utility access (proximity and capacity) are preferred to sites that lack some of these utilities. Sites requiring on-site wells and on-site septic systems require larger site sizes, as well as potentially higher operations and maintenance costs.

Acquisition and Development Cost- In general, municipally-owned property is preferable over privately-owned sites, as there is typically no direct cost associated with site acquisition. However, there is an opportunity cost associated with reserving municipal lands for a non-revenue-producing use. In addition, off-site development costs, such as constructing an access road or upgrading utility systems increase the overall cost to develop a site. Site characteristics, such as those mentioned above, are very important factors in development cost and can result in a no-cost site being more expensive in the end than a purchased site.

1.3 Site Selection Process

The site identification and evaluation process consisted of:

1. Determining search criteria and identifying desired parameters of the site.
2. Inventorying potentially available parcels.
3. Evaluating parcels against initial criteria and eliminating unsuitable sites.
4. Refining the inventory to only suitable parcels and expanding analysis on these sites.
5. Presenting the most suitable sites and documenting the merits and potential drawbacks for each.
6. Making a site recommendation based on the analysis.

A comprehensive list of potential sites was developed based on the following initial screening criteria:

- Location: Lake Otis Parkway, east to Muldoon Road, and Debarr Road, south to Dr. Martin Luther King Junior Avenue, including parcels directly abutting these streets (Figure 1- Study Area).
- Size: The parcel must be at least 8 acres in size.

The initial site inventory included 83 potential parcels within the study area. The zoning designation of each site was evaluated and only sites zoned PLI, I-1, or 1-2 District were retained for further evaluation. This resulted in 44 suitable sites for further consideration (Figure 2- Potential Sites for Analysis).

Of these 44 remaining sites, developed parcels, parcels with obvious environmental constraints (wetlands and/or lakes covering majority of site) (Figure 3 – Wetlands Map), or parcels not adjacent or in close proximity to an arterial or greater classified road were eliminated. This resulted in five sites to be evaluated against the remaining criteria.

1.4 Sites Selected for Further Analysis

The five sites selected for further analysis include Sites 13, 18, 21, 22, and 27 (Figure 2). Below is a brief overview of each site. A more detailed evaluation for each site is provided in Section 2 (Site Evaluations).

Site 13: Located at the northeast corner of Debarr Road and Patterson Street, the site is zoned I-1 District. The undeveloped parcel is approximately 12.8 acres and is currently under private ownership. There is a signalized intersection at Debarr Road and Patterson Street, providing good access. Access to Debarr Road provides good east/west connections to several major north/south corridors.

Site 18: Located near the southeast corner of East Tudor Road and Campbell Airstrip Road, the parcel is owned by the MOA and is zoned PLI District. The undeveloped parcel is 20 acres and has some wetlands on the site. Given the size of this parcel and the availability of adjacent undeveloped lands to the west (portion of site 15), there would likely be adequate area, not encumbered with wetlands, for at least an 8-acre development. The site enjoys good access from a signalized intersection at Tudor and Campbell Airstrip Roads, with Tudor Road providing east/west access to several major north/south corridors.

Site 21: Located south of Dr. Martin Luther King Junior Avenue and the Alaska State Crime Lab, this property is owned by the MOA and is zoned PLI District. This undeveloped parcel is 19.8 acres. The site has direct access onto Dr. Martin Luther King Junior Avenue which provides good east/west connections to several major north/south corridors.

Site 22: Located at the northeast corner of Muldoon Road and East 32nd Avenue, the site is adjacent to the Totem Theater. This parcel is zoned Two-Family Residential (R-2A) District, and is undeveloped. The parcel is approximately 24.8 acres and is owned by the Anchorage School District. The site has direct access onto Muldoon Road at a signalized intersection via East 32nd Avenue. Muldoon Road provides good north/south access to several major east/west corridors.

Site 27: Located near the northwest corner of Dr. Martin Luther King Junior Avenue and Tudor Centre Drive, the site is partially developed with the Anchorage Police Department. This parcel is zoned PLI District, and is approximately 25.7 acres, however the developable area is 9.6 acres. The site is positioned to potentially have direct access Dr. Martin Luther King Junior Avenue which provides good east/west connection, and Tudor Centre Drive, providing good north/south connections to several major corridors. There is a plat note restricting access to Tudor Centre Drive that can potentially be modified or removed to allow this connection.

1.5 Land Use Planning Considerations

The sites being considered for the relocation of the ASD Student Transportation Facility are subject to the provisions of the Anchorage Bowl Comprehensive Plan (Anchorage 2020), the 2040 LUP, East Anchorage District Plan (EADP), The UMED District Plan, and Anchorage Municipal Code (AMC) Title 21 land use regulations.

Anchorage 2020 does not specifically address development of these sites. The 2040 LUP designates site 13 as Town Center. Town Centers are intended to provide a focal point of activity for a group of neighborhoods and the regional area for major parts of the Anchorage Bowl and to serve as destinations for shopping, entertainment, and services in pedestrian-friendly settings. Sites 18, 21, and 22 are designated as Community Facility or Institution in the 2040 LUP. The Community Facility or Institution designation is intended for public or institutional facilities on public or institutional lands. The 2040 LUP designation supports the ASD Student Transportation Facility use.

Sites 13 and 22 are within the EADP area. The EADP land use map designates site 13 as Town Center, which, like the 2040 LUP, is intended to provide areas that serve as a focus of community activity including retail shopping and services, public facilities, and medium- to high-density housing. This

designation does not support the ASD Student Transportation Facility use on site 13. Site 22 is designated as School and Community Institutional in the EADP land use plan map. The purpose of this designation is to provide small- to medium-scale institutions that provides a community service for the surrounding area. This designation supports the ASD Student Transportation Facility use.

Sites 21 and 27 are located within the 3500 Tudor Road Master Plan area. The purpose of this plan is to provide a framework for development of the area south of Tudor Road between Tozier Track and Boniface Parkway. The 3500 Tudor Road Master Plan Land Use Map designates site 21 as Recreation and Recreation-Related Public Purposes, which does not support the ASD Student Transportation Maintenance Facility use. The plan designates site 27 as Suitable for New Development for institutional uses, which does support the ASD Student Transportation Maintenance Facility use.

Under Title 21, the PLI District is intended to include “major public and quasi-public civic, administrative, and institutional uses and activities” (AMC 21.04.060). The ASD Student Transportation Facility is permitted as an Outdoor Vehicle and/or Equipment Storage associated with Community Use in the PLI District, subject to approval of a Major Site Plan Review.

The I-1 District is intended primarily for “public and private light and general manufacturing, processing, service, storage, wholesale, and distribution operations along with other uses that support and/or are compatible with industrial uses (AMC 21.04.050). The ASD Student Transportation Facility is a permitted use in the I-1 District.

2.0 SITE EVALUTATIONS

The following provides a detailed discussion of the evaluation of the five sites. Existing condition maps, graphically summarizing each of the five sites, can be found in Appendix B.

2.1 Site 13 Evaluation

2.1.1 General Information/Size

Site 13 is located near the northeast corner of Debarr Road and Patterson street and can be found on MOA Grid SW1340. The site is privately owned and is just under 13 acres in size. The Parcel ID number is 006-411-19 and is legally described as Creekside Subdivision, Tract A, per plat 2012-065.

2.1.2 Zoning District

The site is zoned I-1 District. Under this designation, lots are required to be at least 50 feet wide, with a total area of 6,000 square feet or more. Front yards must be at least 10 feet deep, and side and rear yards must be 20 feet deep if adjacent to a residential district; otherwise 0 or at least 5 feet deep. There is a 50-foot height restriction for structures located within the I-1 District (AMC 21.06.020). While this parcel meets zoning requirements and the zoning designation supports the use, this site is designated as Town Center by the 2040 LUP and the East Anchorage District Plan, as noted in section 1.5. This designation does not support the use.

2.1.3 Accessibility

Access to this site as available via both Debarr Road and Patterson Street. Debarr Road is classified as a major arterial, which is preferred for this type of use. There is a signalized intersection at Debarr Road and Patterson Road which provides good multi-directional access to major corridors.

2.1.4 Environmental Resource Sensitivity

The site is not encumbered with any known wetlands, streams, or critical habitat. This site has been partially developed with fill and grade activities.

2.1.5 Soil and Drainage

The site is relatively level and drains to the northwest. Ground conditions generally consist of 20 to 35 feet of alluvial gravel with varying degrees of silt and sand overtop dense, glacial till. Pockets of loose silty soils are present across the site and fill up to several feet thick is present in some areas. Several feet of alluvial sand and gravel may have been mined in some areas and backfilled with inferior materials. Geotechnical reports from 2008 reference that the northern portion of the site appears to have been contaminated with petroleum hydrocarbons and chlorinated solvents and were in the process of being remediated.

2.1.6 Availability of Utilities

Water Supply

This site is serviced by AWWU from a water main located within the north side of Debarr Road, the east side of Patterson Street, and the north side of 10th Avenue. A water service extension would be required to connect into this water main.

Sewer

A sewer main is located within the east side of East 10th Avenue. A sewer mainline extension would be required to connect into this sewer main. This connection may require a bore under East 10th Avenue, which is a significant cost impact.

Storm Drain

The municipal storm system is available on the east portion of the site.

Electric

This property is within the Chugach Electric Association (CEA) service area. An electric main runs along the northern side of Debarr Road, the western side of Patterson Street, and the northern side of East 10th Avenue. An electric service with connect will be required to serve this site.

Gas

This property is within the ENSTAR service area. Gas is available on the south side of Debarr Road and the west side of Patterson Street.

Telecommunications

This property is within the Alaska Communications Service (ACS) service area. Telecommunications is available on the northern side of Debarr Road.

2.1.7 Acquisition/Site Development Cost

This site is privately owned and would need to be acquired. The site is currently not listed in the Alaska Multiple Listing Service (MLS) or otherwise advertised as being for sale. The 2018 MOA assessed value for the entire site is \$5,581,000.

Earthwork for site grading may involve filling low areas or improving soft silty areas by over excavation and replacement. Conventional shallow foundations are feasible with the potential for additional over excavation if deeper fill is encountered.

2.1.8 Summary of Approval Criteria Outlined in AMC 21.03.140.H

The approval criteria for public facilities site selection is outlined in AMC 21.03.140H and is summarized below for Site 13:

1. Whether the site will allow development that is compatible with current and projected land uses.

The site is identified as a town center in the 2040 LUP and the East Anchorage District Plan, as noted in section 1.5. This designation does not support this use. Therefore, this condition is not met.

2. Whether the site is large enough to accommodate the proposed use and future additions or other planned public facility

The site is just under 13 acres in size and is privately owned. The current facility is located on 9.5 acres and 8 acres has been determined to be the minimum lot size. The site is of adequate size for this project. This condition is met.

3. Whether the proposed government use and its intensity is compatible with the surrounding district and adopted policies for future development in the district.

The site is zoned I-1, Light Industrial and this facility is a permitted use. However, this site is designated as a Town Center by the 2040 LUP and the East Anchorage District Plan. This designation does not support the use. This condition is partially met.

4. Whether adequate utility and transportation infrastructure is available.

The site is served by the water, storm drain, electric, gas and telephone. A sewer main is located on the east side of 10th Avenue, which would require a sewer mainline extension to serve the property. Although there is a cost associated with the sewer mainline extension, utilities are located adjacent or near the site. The condition is met.

5. Whether the site is located near a transit route, if applicable.

This condition is not applicable.

6. Whether there are existing or planned walkways connecting the site to transit stops and surrounding residential areas, where applicable.

This condition is not applicable.

7. The environmental suitability of the site.

The site is not encumbered with any known wetlands, streams, or critical habitat. This condition is met.

8. The financial feasibility of the site, including maintenance and operations.

The site is privately owned and would need to be acquired. A portion of the site is currently developed with fill and grade activities. Additional earthwork for site grading may include filling low areas or improving soft silty areas by over excavation and replacement. Conventional shallow foundations are feasible with the potential for additional over excavation if deeper fill is encountered. This condition is met.

9. Whether the proposed site for a major municipal, state administrative offices conforms with the adopted policy priority for locating in the Central Business District. Satellite government offices and other civic functions are encouraged to locate in regional or town centers if practicable.

This condition is not applicable.

2.2 Site 18 Evaluation

2.2.1 General Information/Size

Site 18 is located along the south side of Tudor Road, east of the Tudor Road and Campbell Airstrip Road intersection within MOA Grid SW1839. The site is owned by the MOA Heritage Land Bank and is 21.6 acres in size. The Parcel ID number is 007-261-01 and is legally described as T13N R3W SEC 35 N2NE4NE4. This site is subject to a US Department of Interior Bureau of Land Management Certificate of Approval (number 50-17) to transfer lands to the MOA to be used for public parks and recreation purposes, and other compatible public purposes only. The use of the ASD Student Transportation Facility is considered such a public purpose, and is consistent with development of adjacent land that is also affected by this Certificate of Approval. This site also includes a portion of Parcel ID 007-261-06, owned by the MOA School District, to provide adequate access to the site via Campbell Airstrip Road.

2.2.2 Zoning District

This site is zoned PLI District. Under this designation, lots are required to be at least 50 feet wide, with a total area of 6,000 square feet or more, with up to 45 percent maximum lot coverage. Front, rear, and side yard setbacks shall be 25 feet when abutting a DR, PR, PLI, or residential district; otherwise, no yard

is required. The height restriction for structures located within the PLI District is 45 feet (AMC 21.06.020).

This parcel meets these requirements, and as noted in section 1.5, this site is designated as Community Facility or Institution by the 2040 LUP. This designation supports the use.

2.2.3 Accessibility

Access to this site as available via both Tudor Road and Campbell Airstrip Road. Tudor Road is classified as a major arterial by the OSHP, which is preferred for this type of use. Campbell Airstrip Road is not specifically classified in the OSHP and is therefore considered a local street, although it serves and is constructed as a collector. There is a signalized intersection at East Tudor Road and Campbell Airstrip Road, providing multi-directional access, with East Tudor Road providing good access to major corridors. A traffic study will likely be required, which would identify any off-site traffic improvements that would be required as part of the development. There is potential for a secondary access point from the private drive that serves Benny Benson that would require a shared access agreement.

2.2.4 Environmental Resource Sensitivity

A portion of the property is encumbered with Class A wetlands. Class A wetlands have the highest resource values, and perform at least two significant wetland functions. Class A wetlands are not to be altered or otherwise disturbed in any manner. Any activity that includes placement of fill in a Class A wetland requires an Individual Section 404 permit from the Corps of Engineers prior to development. The site is large enough that it could likely be developed without disturbing any onsite wetlands.

2.2.5 Soil and Drainage

The southwestern portion of this site is a topographic high which supports the Municipality's 5 million gallon (MG) and 10 MG water tanks. The east and southeastern parcel are delineated as Class A wetlands and likely contain significant peat and may be unsuitable for structures or pavement. The northern parcel (or half of the area) is primarily the hill or topographic high. Based on the geotechnical report for the water tank, the hill consists of 15 feet of loose silt or silty sand over dense, silty sand and gravel (till). The dense soil is suitable for conventional foundations for structures or pavement sections. Undeveloped areas may contain relic permafrost, due to the north facing slope aspect.

2.2.6 Availability of Utilities

Water Supply

The site is served by AWWU by a public water main line that runs along the northern property boundary.

Sewer

A sewer mainline is located within the north side of East Tudor Road. A sewer mainline extension would be required to connect to this sewer main.

Storm Drain

The municipal storm drain runs along the north side of Tudor Road.

Electric

This property is within the CEA service area. An electric main runs along north property boundary within the south side of Tudor Road.

Gas

This property is within the ENSTAR service area. Gas is available on the south side of Tudor Road.

Telecommunications

This property is within the ACS service area. Telecommunications is available on the south side of Tudor Road.

2.2.7 Ownership and Acquisition Cost

This site is owned by the MOA Heritage Land Bank, so there would be no cost associated with acquisition. This use would be subject to approval of a Major Site Plan Review, which would cost approximately \$25-30K requires an approximate 4-month time-period for approval.

Earthwork considerations include significant grading to level the site, particularly the northern parcel. The silty soil may be difficult to compact due to the high fines content (30+ percent) for cut and fill although it is possible. Areas of fill supporting structures may require imported NFS fill to reduce frost heave movement for cold foundations.

2.2.8 Summary of Approval Criteria Outlined in AMC 21.03.140.H

The approval criteria for public facilities site selection is outlined in AMC 21.03.140H and is summarized below for Site 18:

1. Whether the site will allow development that is compatible with current and projected land uses.

The site is identified as a Community Facility or Institution by the 2040 LUP. This designation supports the use. This condition is met.

2. Whether the site is large enough to accommodate the proposed use and future additions or other planned public facility

The site is 21.6 acres in size and owned by the MOA Heritage Land Bank. The current facility is located on 9.5 acres and 8 acres has been determined to be the minimum lot size. The site is of adequate size for this project. This condition is met.

3. Whether the proposed government use and its intensity is compatible with the surrounding district and adopted policies for future development in the district.

The site is zoned PLI and the use is permitted in this zoning district. The site is designated as a Community Facility or Institution by the 2040 LUP, which supports this use. This condition is met.

4. Whether adequate utility and transportation infrastructure is available.

The site is served by the water, storm drain, electric, gas and telephone. A sewer main is located within the north side of East Tudor Road and a sewer mainline extension would be required to serve the site. Although there is a cost associated with the sewer mainline extension, utilities are located adjacent or near the site. The condition is met.

5. Whether the site is located near a transit route, if applicable.

This condition is not applicable.

6. Whether there are existing or planned walkways connecting the site to transit stops and surrounding residential areas, where applicable.

This condition is not applicable.

7. The environmental suitability of the site.

A portion of the property is encumbered with Class A wetlands. Class A wetlands have the highest resource values and perform at least two significant wetland functions. Class A wetlands are not to be altered or otherwise disturbed in any manner. However, the site is large enough that it could likely be developed without disturbing any onsite wetlands. Since development could likely occur without disturbing the Class A wetlands, the condition is met.

8. The financial feasibility of the site, including maintenance and operations.

The site is owned by the MOA Heritage Land Banks, so there would be no cost associated with acquisition. Earthwork considerations include significant grading to level the site, particularly the northern parcel. Areas of fill supporting structures may require imported NFS fill to reduce the frost heave movement for cold foundation. Although acquisition cost is not required, the earthwork associated with the site could have a significant cost. Therefore, this condition is partially met.

9. Whether the proposed site for a major municipal, state administrative offices conforms with the adopted policy priority for locating in the Central Business District. Satellite government offices and other civic functions are encouraged to locate in regional or town centers if practicable.

This condition is not applicable.

2.3 Site 21 Evaluation

2.3.1 General Information/Size

Site 21 is located south of the intersection of Dr. Martin Luther King Junior Avenue and Tudor Centre Drive and can be found on MOA Grid SW1836. The site is owned by the MOA Heritage Land Bank and is just under 20 acres in size. The Parcel ID number is 008-121-08 and is legally described as Tudor Municipal Campus Subdivision, Tract 6, per plat 2009-16. This site is also subject to the US Department

of Interior Bureau of Land Management Certificate of Approval (number 50-17) discussed above. The use of the ASD Student Transportation Facility is considered such public purpose and is consistent with development of adjacent land that is also affected by this Certificate of Approval.

2.3.2 Zoning District

This site is zoned PLI District. Under this designation, lots are required to be at least 50 feet wide, with a total area of 6,000 square feet or more, with up to 45 percent maximum lot coverage. Front, rear, and side yard setbacks shall be 25 feet when abutting a DR, PR, PLI, or residential district; otherwise, no yard is required. The height restriction for structures located within the PLI District is 45 feet (AMC 21.06.020).

This parcel meets these requirements and as noted in section 1.5, this site is designated as Community Facility or Institution by the 2040 LUP. This designation supports the use. However, the applicable 3500 Tudor Road Master Plan Land Use Map designation of Recreation and Recreation-Related Public Purposes does not support the use.

2.3.3 Accessibility

Access to this site as available via Dr. Martin Luther King Junior Avenue, which is classified as a minor arterial by the OSHP. A road classification of arterial or greater is desired for the facility and would satisfy that requirement. There is a signalized intersection at Dr. Martin Luther King Junior Avenue and Tudor Centre Drive and provides good access to major corridors.

2.3.4 Environmental Resource Sensitivity

This site is an isolated upland area surrounded by Class A wetlands

2.3.5 Soil and Drainage

Site 21 has geotechnical data nearby for the roadway and trail overpass. Peat from 1 to 6 feet deep was encountered overlying silt, silty sand and gravel, and sand to depths of 15 to 20 feet. Below this, very stiff, lean clay approximately 10 feet thick over silty gravel, silt, and sand to 60 feet. There is a local topographic high, with potentially 30 to 40 feet of site elevation change across the parcel. Drainage across the site is generally to the west with the area draining south towards Campbell Creek. Undeveloped areas may contain discontinuous permafrost.

2.3.6 Availability of Utilities

Water Supply

This site is served by AWWU from a water main located within the north side of Dr. Martin Luther King Junior Avenue. A water service extension would be required to connect into this water main. This connection will likely require a bore under Dr. Martin Luther King Junior Avenue, which is a significant cost impact.

Sewer

A sewer mainline is located within the east side of Elmore Road. A mainline extension would be required

to connect to this sewer main. This connection will likely require a bore under Elmore Road and Dr. Martin Luther King Junior Avenue, which is a significant cost impact.

Storm Drain

The municipal storm drain is available within Dr. Martin Luther King Junior Avenue.

Electric

This property is within the CEA service area. Electric mains run along the east sides of Elmore Road and Tudor Centre Drive. An electric service connect will be required to serve this site.

Gas

This property is within the ENSTAR service area. Gas is available along the south side of Tudor Drive.

Telecommunications

This property is within the ACS service area. There are no telecommunications connections near the property and will need to be developed to serve this site.

2.3.7 Ownership and Acquisition Cost

This site is owned by the MOA Heritage Land Bank, so there would be no cost associated with acquisition. This use would be subject to approval of a Major Site Plan Review, which would cost approximately \$25-30K and requires an approximate 4-month time-period for approval.

Earthwork considerations include significant cut and fill to the level the parcel. The site appears generally suitable to support structures and pavement with up to 6 feet of peat observed in the area that will require over excavation and replacement.

2.3.8 Summary of Approval Criteria Outlined in AMC 21.03.140.H

The approval criteria for public facilities site selection is outlined in AMC 21.03.140H and is summarized below for Site 21:

1. Whether the site will allow development that is compatible with current and projected land uses.

The site is identified as a Community Facility or Institution by the 2040 LUP. This designation supports the use. However, the applicable 3500 Tudor Road Master Plan Land Use map designation of Recreation and Recreation-Related Public Purposes does not support the use. This condition is not met.

2. Whether the site is large enough to accommodate the proposed use and future additions or other planned public facility

The site is just under 20 acres in size and owned by the MOA Heritage Land Bank. The current facility is located on 9.5 acres and 8 acres has been determined to be the minimum lot size. The site is of adequate size for this project. This condition is met.

3. Whether the proposed government use and its intensity is compatible with the surrounding district and adopted policies for future development in the district.

The site is zoned PLI and the use is permitted in this zoning district. The site is designated as a Community Facility or Institution by the 2040 LUP, which supports this use. However, the applicable 3500 Tudor Road Master Plan land use Map designation of Recreation and recreation-Related Public Purposes does not support the use. This condition is not met.

4. Whether adequate utility and transportation infrastructure is available.

The site is served by the storm drain, electric, gas and telephone. A water main is located within the north side of Dr. Martin Luther King Junior Avenue. A water service connection would likely require a bore under Dr. Martin Luther King Junior Avenue, which is a significant cost impact. A sewer mainline is located within the east side of Elmore Road. A mainline extension would be required to provide sewer service. This would likely require a bore under Elmore Road and Dr. Martin Luther King Junior Avenue, which is a significant cost. Since both water and sewer service would likely require roadway boring, which is a significant cost impact, the condition is not met.

5. Whether the site is located near a transit route, if applicable.

This condition is not applicable.

6. Whether there are existing or planned walkways connecting the site to transit stops and surrounding residential areas, where applicable.

This condition is not applicable.

7. The environmental suitability of the site.

The site is an isolated upland area surrounded by Class A wetlands. Therefore, the condition is met.

8. The financial feasibility of the site, including maintenance and operations.

The site is owned by the MOA Heritage Land Banks, so there would be no cost associated with acquisition. Earwork considerations include significant cut and fill to level the parcel. The site appears generally suitable to support structures and pavement with up to 6 feet of peat observed in the area that will require over excavation and replacement. Therefore, this condition is met.

9. Whether the proposed site for a major municipal, state administrative offices conforms with the adopted policy priority for locating in the Central Business District. Satellite government offices and other civic functions are encouraged to locate in regional or town centers if practicable.

This condition is not applicable.

2.4 Site 22 Evaluation

2.4.1 General Information/Size

Site 22 is located near the northeast corner of Muldoon Road and East 32nd Avenue and can be found on MOA Grid SW1641. This site is adjacent to Totem Theater. The site is owned by the MOA School District and is just under 25 acres in size. The Parcel ID number is 007-291-07 and is generally described as T13N R3W SEC 25 NW4NW4NE4&NE4NW4NE4 PTNS & E2NW4NE4&NW4NW4NE4 PTNS.

2.4.2 Zoning District

This site is zoned R-2A District, which does not allow outdoor storage associated with community uses as a permitted or conditional use. Under this designation, lots are required to be at least 50 feet wide, with a total area of 6,000 square feet or more, with up to 40 percent maximum lot coverage. Front yard setbacks must be 20 feet deep, side yards must be 5 feet deep, and rear yards must be 10 feet deep. The height restriction for primary structures located within the R-2A District is 30 feet (AMC 21.06.020). This site was acquired by the ASD for a possible middle school or elementary school. Following the development of Begich Middle School at another site, only an elementary school is required for this area. The site is large enough to accommodate a future elementary school and the ASD Student Transportation Facility.

The site would have to go through a zoning map amendment to rezone the parcel to PLI District, which is supported by the East Anchorage District Plan designation of School and Community Institution as well as the 2040 LUP designation of Community Facility or Institution, noted in section 1.5. This designation supports the use. However, the possible relocation for the ASD Student Transportation Facility at this location was presented to the Northeast Community Council on September 21, 2017. This was met by opposition by the community due to surrounding residential uses, and it was determined that a site selection process should be performed to determine if there were any other suitable sites that would not impact residential development.

2.4.3 Accessibility

Access to this site is available via Muldoon Road. Muldoon Road is classified as a major arterial by the OSHP, which is preferred for this type of use. There is a signalized intersection at Muldoon Road and East 32nd Avenue and Muldoon Road provides good access to several major transportation corridors.

2.4.4 Environmental Resource Sensitivity

A portion of the site, along the east property line, is encumbered with Class C wetlands. Given the size and shape of the parcel, it is likely that an 8-acre development would work on the site with minimal to no disturbance of the wetlands.

2.4.5 Soil and Drainage

Site 22 has multiple geotechnical studies which have been completed for private entities. The northwest area of the parcel appears to be primarily silty sand and gravel capable of supporting conventional shallow foundations or parking areas. This area is also the high topographical point with onsite drainage to the eastern portion. The eastern portion of the site is lower elevation and contains uncontrolled fill consisting of silty sand, silty gravel, and peat to depths of 23 feet overlying natural peat to depths up to 33 feet. Overall peat thickness is up to 25 feet thick in the deeper areas.

2.4.6 Availability of Utilities

Water Supply

This site is served by AWWU from a public water main line, which runs from East 32nd Avenue to East Northern Lights Boulevard.

Sewer

A public sewer main line runs along a portion of East 32nd Avenue, serving the adjacent Totem Theatre. A main line extension, bringing sewer to the site, would be required.

Storm Drain

A municipal storm drain runs along the south side of East 32nd Avenue and available to this site from its southern boundary.

Electric

This property is within the CEA service area. An electric main runs along eastern property boundary, and a portion of the northern property boundary. An electric service connect will be required to serve this site.

Gas

This property is within the ENSTAR service area. Gas is available on the south side of East 32nd Avenue.

Telecommunications

This property is within the ACS service area. Telecommunications is available on the northern side of East 32nd Avenue.

2.4.7 Ownership and Acquisition Cost

This site is owned by the MOA School District, so there would be no cost associated with acquisition. The site would need to be rezoned to PLI District which could cost between approximately \$25-30K and would add 6-9 months to the development. This use would be subject to approval of a Major Site Plan Review, which would cost approximately \$25-30K and requires an approximate 4-month time-period for approval.

Excavation and replacement of deep peat is typically not economical for parking or structures. The northwest portion of the site appears suitable for structures. The eastern portion could be surcharged to reduce settlement. Pavement or canopy structures are not recommended in the eastern portions of the

site without surcharging the site due to the substantial peat thickness (up to 25 feet). Deep foundations such as driven piles are possible through the peat but may require pile lengths more than 50 feet due to down drag forces or frost heave resistance.

2.4.8 Summary of Approval Criteria Outlined in AMC 21.03.140.H

The approval criteria for public facilities site selection is outlined in AMC 21.03.140H and is summarized below for Site 22:

1. Whether the site will allow development that is compatible with current and projected land uses.

The site is currently zoned R-2A, which does not allow outdoor storage associated with community uses as a permitted or conditional use. The site would need to go through a zoning map amendment to rezone the parcel to PLI District, which is supported by the East Anchorage District Plan designation of School and Community Institution as well as the 2040 LUP designation of Community Facility or Institution. This designation supports the use. However, the possible relocation for the ASD Student Transportation Facility at this location was presented to the Northeast Community Council on September 21, 2017. This was met by opposition by the community due to surrounding residential uses, and it was determined that a site selection process should be performed to determine if there were any other suitable sites that would not impact residential development. Therefore, the condition is not met.

2. Whether the site is large enough to accommodate the proposed use and future additions or other planned public facility

The site is just under 25 acres in size and owned by the MOA School District. The current facility is located on 9.5 acres and 8 acres has been determined to be the minimum lot size. The site is of adequate size for this project. This condition is met.

3. Whether the proposed government use and its intensity is compatible with the surrounding district and adopted policies for future development in the district.

The site is currently zoned R-2A, which does not allow outdoor storage associated with community uses as a permitted or conditional use. The site would need to go through a zoning map amendment to rezone the parcel to PLI District, which is supported by the East Anchorage District Plan designation of School and Community Institution as well as the 2040 LUP designation of Community Facility or Institution. This designation supports the use. However, the possible relocation for the ASD Student Transportation Facility at this location was presented to the Northeast Community Council on September 21, 2017. This was met by opposition by the community due to surrounding residential uses, and it was determined that a site selection process should be performed to determine if there were any other suitable sites that would not impact residential development. Therefore, the condition is not met.

4. Whether adequate utility and transportation infrastructure is available.

The site is currently served by water, sewer, storm drain, electric, gas and telephone. Therefore, the condition is met.

5. Whether the site is located near a transit route, if applicable.

This condition is not applicable.

6. Whether there are existing or planned walkways connecting the site to transit stops and surrounding residential areas, where applicable.

This condition is not applicable.

7. The environmental suitability of the site.

A portion of the site, along the east property line, is encumbered with Class C wetlands. Given the size and shape of the parcel, it is likely that an 8-acre development would work on the site with minimal to no disturbance of the wetlands. Therefore, the condition is met.

8. The financial feasibility of the site, including maintenance and operations.

The site is owned by the MOA School District, so there would be no cost associated with acquisition. The site would need to be rezoned, which has a cost and schedule impact to the project. A Major Site Plan Review would also be required.

The northwest portion of the site appears suitable for structures. The eastern portion could be surcharged to reduce settlement. Pavement or canopy structures are not recommended in the eastern portion of the site without surcharging the site due to substantial peat thickness (up to 25 feet). Deep foundations such as driven piles are possible through the peat but may require pile lengths more than 50 feet due to down drag forces or frost heave resistance. Due to the cost associated with a rezone and Major Site Plan Review along with the associated construction cost, it may not be financially feasible to use this site. Therefore, the condition is not met.

9. Whether the proposed site for a major municipal, state administrative offices conforms with the adopted policy priority for locating in the Central Business District. Satellite government offices and other civic functions are encouraged to locate in regional or town centers if practicable.

This condition is not applicable.

2.5 Site 27 Evaluation

2.5.1 General Information/Size

Site 27 is located near the northwest corner of Dr. Martin Luther King Junior Avenue and Tudor Centre Drive, and can be found on MOA Grid SW1836. The site is owned by the MOA and is approximately 25.7

acres in size, however is partially developed with the Anchorage Police Department. The portion of this site that is developable is 9.4 acres and may be developed further to the west on current Animal Control land, if additional space is required. The Parcel ID is 008-091-16 and is legally known as Tudor Municipal Campus, Tract 2, per plat 2009-016.

2.5.2 Zoning District

This site is zoned PLI District. Under this designation, lots are required to be at least 50 feet wide, with a total area of 6,000 square feet or more, with up to 45 percent maximum lot coverage. Front, rear, and side yard setbacks shall be 25 feet when abutting a DR, PR, PLI, or residential district; otherwise, no yard is required. The height restriction for structures located within the PLI District is 45 feet (21.06.020).

This parcel meets these requirements, and as noted in section 1.5, this site is designated as Community Facility or Institution by the 2040 LUP. This designation supports the use.

2.5.3 Accessibility

Access to this site as available via Dr. Martin Luther King Junior Avenue, which is classified as a minor arterial by the OSHP. A road classification of arterial or greater is desired for the facility, and would satisfy that requirement. There is a signalized intersection at Dr. Martin Luther King Junior Avenue and Tudor Centre Drive and provides good access to major corridors. Plat 2009-016 restricts direct access onto Tudor Centre Drive, which may be modified or removed if approved by the Platting Board to allow this access. A traffic study will likely be required as part of the development, which would identify any off-site traffic improvements that would be required as part of the development. There is potential for a secondary access point from the private drive that serves the Anchorage Police Department that would require a shared access agreement.

2.5.4 Environmental Resource Sensitivity

The 9.4 acre developable portion of this site is encumbered with Class B and C wetlands. Given the size and shape of the parcel, it is likely that development would work on the site with minimal disturbance of the Class C wetlands. Development of wetlands may be permitted following issuance of an Individual Section 404 Permit from the Corp of Engineers. This site was previously granted a Section 404 permit to the MOA, however a new permit would need to be obtained.

2.5.5 Soil and Drainage

Site 27 has geotechnical data that was obtained during development of the Anchorage Police Department Facilities. In general, 1 to 10 feet of peat overlay sand and gravel with silt, with sand being more prevalent than gravel. Existing geotechnical data is to a maximum depth of 30 feet. The water table is shallow, typically between 2 and 10 feet below ground surface. Topography is generally flat, with ridges 5 to 15 feet in height scattered over the site. These ridges are waste piles from gravel extraction in the area and contain organic material. Existing material below the peat is dense and would likely support conventional foundations for structures or pavement sections.

2.5.6 Availability of Utilities

Water Supply

The site is served by AWWU by a public water main line that runs along the southern property boundary.

Sewer

A sewer mainline is located to the west of this site, south of the Anchorage Police Department. A mainline extension would be required to connect to this sewer main.

Storm Drain

The municipal storm drain is available near the southern boundary of the site at Dr. Martin Luther King Junior Avenue, and east of the property at Tudor Centre Drive.

Electric

This property is within the CEA service area. An electric main runs along west property boundary. An electric service extension may be required to enhance service to this site.

Gas

This property is within the ENSTAR service area. Gas is available on the south side of Tudor Drive, north of the property.

Telephone

This property is within the ACS service area. Telephone is available on the southern side of East Tudor Road, north of the property.

2.5.7 Ownership and Acquisition Cost

This site is owned by the MOA, with management authority to MOA Real Estate Services, so there would be no cost associated with acquisition. This use would be subject to approval of a Major Site Plan Review, which would cost approximately \$25-30K requires an approximate 4-month time-period for approval. Section 404 permitting would add additional cost and potential development time for this site.

Earthwork considerations include significant grading to level the site particularly the northern parcel. The silty soil may be difficult to compact due to the high fines content (30+ percent) for cut and fill although it is possible. Areas of fill supporting structures may require imported NFS fill to reduce frost heave movement for cold foundations.

2.5.8 Summary of Approval Criteria Outlined in AMC 21.03.140.H

The approval criteria for public facilities site selection is outlined in AMC 21.03.140H and is summarized below for Site 27:

1. Whether the site will allow development that is compatible with current and projected land uses.

The site is currently zoned PLI and this use is permitted. The site is designated as a Community Facility or Institution in the 2040 LUP. This designation supports the use. Therefore, the condition is met.

2. Whether the site is large enough to accommodate the proposed use and future additions or other planned public facility

The site is 25.7 acres in size, however is partially developed with the Anchorage Police Department. The portion of this site that is developable is 9.4 acres. The current facility is located on 9.5 acres and 8 acres has been determined to be the minimum lot size. The site is of adequate size for this project. This condition is met.

3. Whether the proposed government use and its intensity is compatible with the surrounding district and adopted policies for future development in the district.

The site is zoned PLI and is designated as a Community Facility or Institution by the 2040 LUP. Therefore, the condition is not met.

4. Whether adequate utility and transportation infrastructure is available.

The site is currently served by water, storm drain, electric, gas and telephone. A sewer mainline is located to the west of this site, south of the Anchorage Police Department. A mainline extension would be required to provide sewer service to the site. Although there is a cost associated with the sewer mainline extension, utilities are available at or near the site. Therefore, the condition is met.

5. Whether the site is located near a transit route, if applicable.

This condition is not applicable.

6. Whether there are existing or planned walkways connecting the site to transit stops and surrounding residential areas, where applicable.

This condition is not applicable.

7. The environmental suitability of the site.

The 9.4 acre developable portion of this site is encumbered with Class B and C wetlands. Given the size and shape of the parcel, it is likely that development would work on the site with minimal disturbance of the Class C wetlands. Development of wetlands may be permitted following issuance of an Individual Section 404 Permit from the Corp of Engineers. This site was previously granted a Section 404 permit to the MOA; however, a new permit would need to be obtained. Although wetland permitting may be required, the site was previously granted a Section 404. Therefore, the condition is met.

8. The financial feasibility of the site, including maintenance and operations.

The site is owned by the MOA with management authority to MOA Real Estate Services, there would be no cost associated with acquisition.

Earthwork considerations included significant grading to level the site particularly the northern parcel. Areas of fill supporting structures may require imported NFS fill to reduce frost heave movement for cold foundations. Due to the potential earthwork requirements, the condition is partially met.

9. Whether the proposed site for a major municipal, state administrative offices conforms with the adopted policy priority for locating in the Central Business District. Satellite government offices and other civic functions are encouraged to locate in regional or town centers if practicable.

This condition is not applicable.

3.0 COMPARISON AND RECOMMENDATIONS

All five potential sites present challenges and benefits when considered for the potential of the ASD Student Transportation Facility relocation. However, Sites 18, 21, and 27 clearly are more desirable than Sites 13 and 22.

While site 13 is zoned I-1, the ASD Student Transportation Facility it is not in line with the 2040 LUP or the EADP. There is access to utilities, however the soils are poor and likely has unknown materials placed on site and on-site contamination has been previously reported. Furthermore, the site it is under private ownership and based on the MOA's assessed taxable value of \$5,581,000, acquisition costs could be significant.

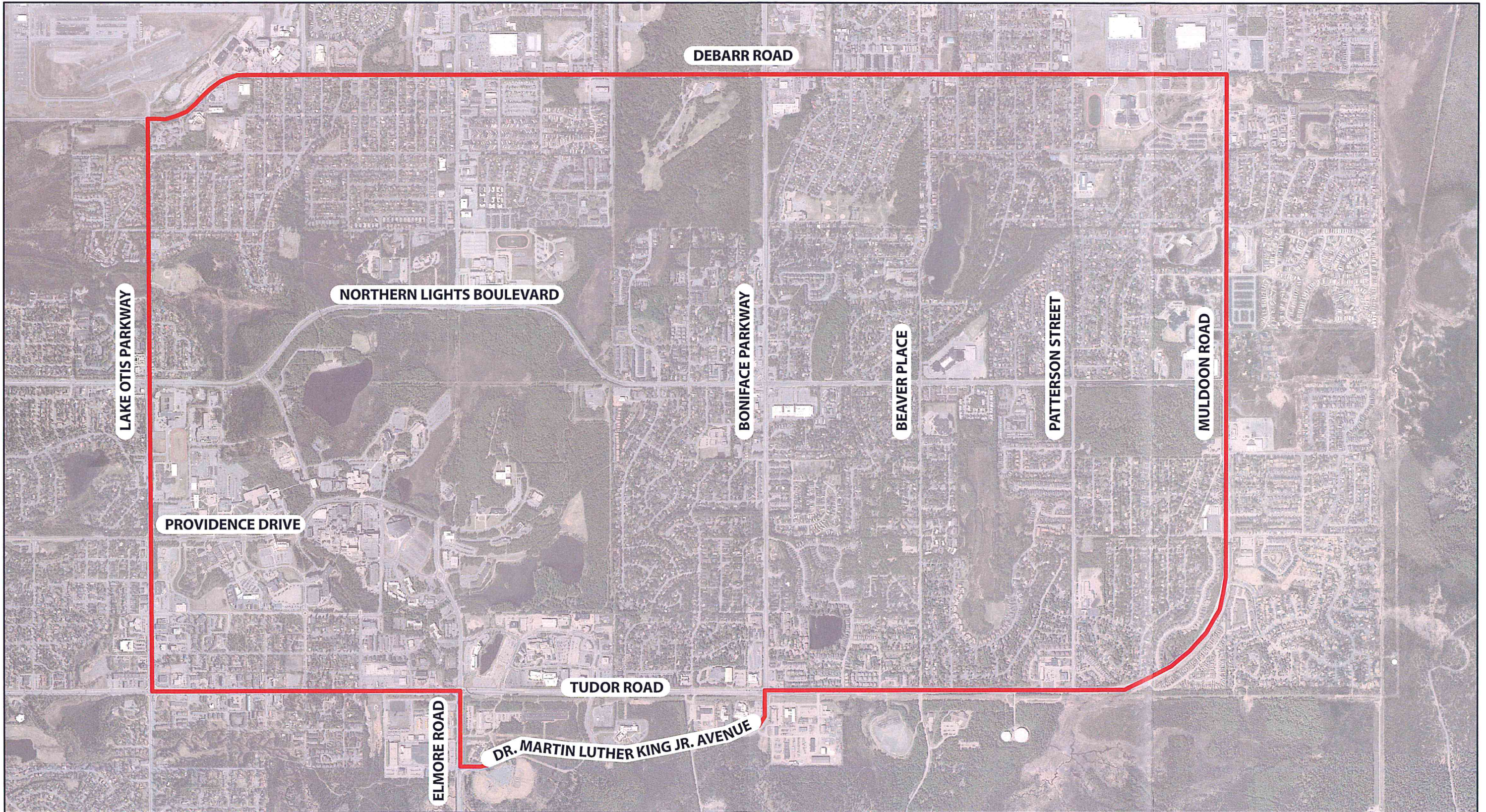
Site 18 is zoned PLI District and is designated Community Facility or Institution in the 2040 LUP, which both allow the ASD Student Transportation Facility. There is good access from a signalized intersection at Tudor and Campbell Airstrip Road. While the site is partially encumbered with wetlands, it is large enough to develop without disturbing them and soils suitable for development are present on the remainder of the site. The site has sufficient access to utilities. This site is owned by the MOA, resulting in no direct acquisition costs.

Site 21 is zoned PLI District with a 2040 LUP designation of Community Facility and Institutions that support the ASD Student Transportation Facility, however the 3500 Tudor Road Land Use Plan designates this area for Recreation and Recreation-Related Public Purposes, which does not support this use, as it is inconsistent with previous commitments to agencies reflected by this plan. There is a signalized intersection at Dr. Martin Luther King Junior Avenue and Tudor Centre Drive, providing good access. While the site is owned by the MOA and the soils are likely suitable for development, development will likely include extensive cut and fill activities. Utility connections will likely require boring under Dr. Martin Luther King Junior Avenue, which could also result in significant costs.

Site 22 is zoned R-2A District with a 2040 LUP designation of Community Facility and Institutions, which supports the use and a potential rezone to PLI District. There is a signalized intersection at East 32nd Avenue and Muldoon Road, providing good access to the site. This site is owned by the MOA and has adequate access to utilities, but may be difficult to economically develop due to additional entitlements required to allow the use and mitigation measures associated with these entitlements.

Site 27 is zoned PLI District and has a 2040 LUP designation of Community Facility or Institution, which both allow the ASD Student Transportation Maintenance Facility. There is a signalized intersection at Dr. Martin Luther King Junior Avenue and Tudor Centre Drive, potentially providing good access to the site as the plat note currently restricts direct access to Tudor Centre Drive, which may be modified through a platting action; an additional access point from the private drive that serves the Anchorage Police Department provides secondary access to the site. The site is owned by the MOA, resulting in no direct acquisition costs. The site has adequate access to utilities. While the site is encumbered by Class B and C wetlands, a development permit for a portion of this site from the Corp of Engineers has been previously approved, and can likely be obtained in the future for the areas encumbered with Class C wetlands. Existing soils will likely support traditional foundation and development.

Based on the site selection analysis, Site 18 and 27 would maximize the service efficiency while having the least negative impact on the surrounding neighborhoods. Both sites are in close proximity to the existing facility, limiting the impact on standard operations, while maintaining distance from residential districts. Site 27 was previously planned for the Anchorage Police Department expansion for supporting facilities, however is not anticipated to be required in the near future following the recent acquisition and long-term lease of the LIO Building downtown, and the ASD Student Transportation Maintenance Facility use will continue to support a community and institutional use. Development costs of Site 18 would likely be equal to the cost of the other evaluated sites, and Site 27 may incur a slightly higher development cost due cost of permitting and mitigating on site wetlands. Both sites are undeveloped, owned by the MOA, zoned PLI, and the use is supported by the 2040 LUP. This report recommends Site 18 or 27 as the most suitable for the relocation of the ASD Student Transportation Maintenance Facility.

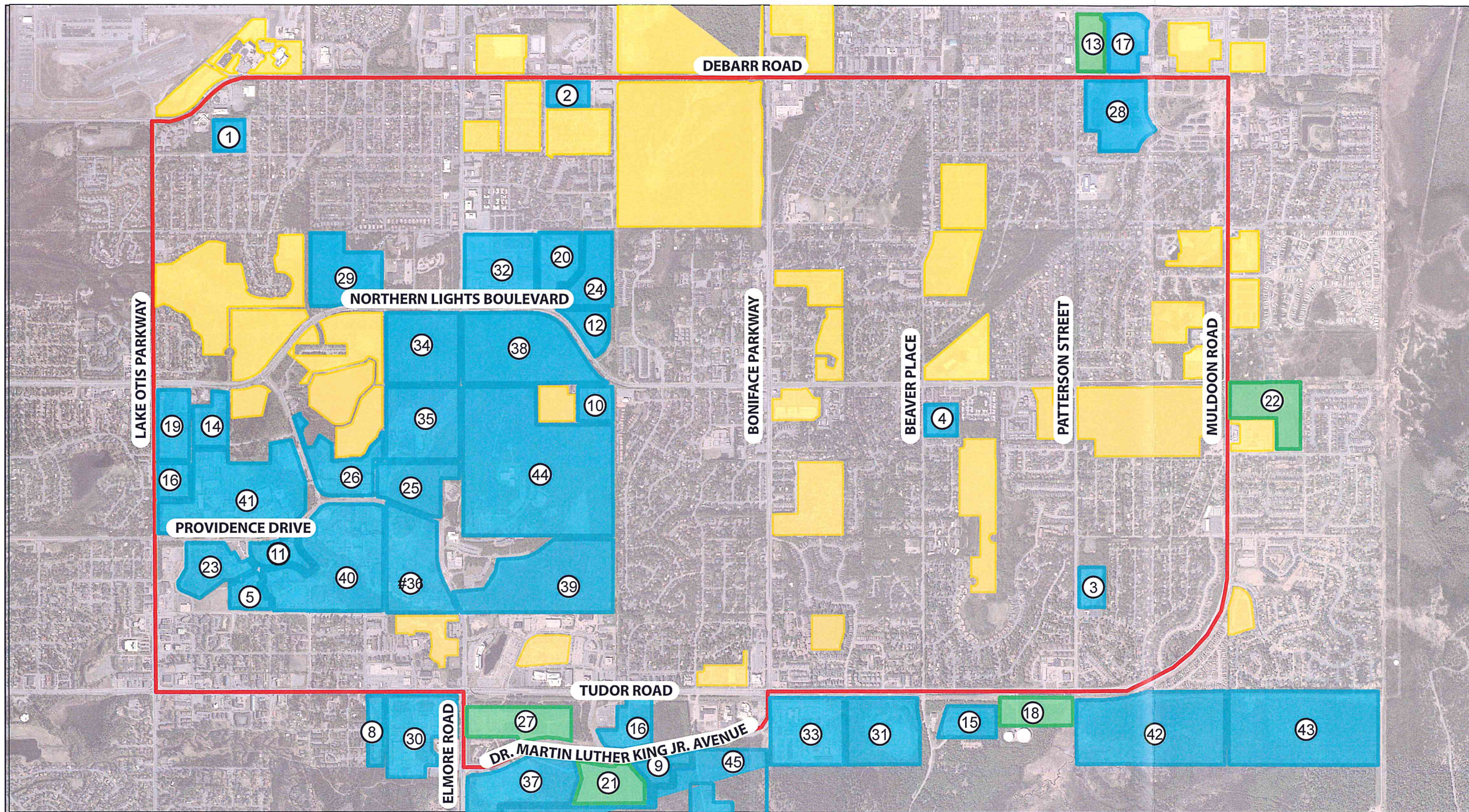


 Study Area

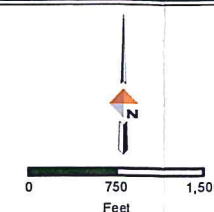


0 750 1,500
Feet

Study Area	
ASD Student Transportation Maintenance Facility Site Selection Study	
	Date: August 31, 2018
Figure 1	

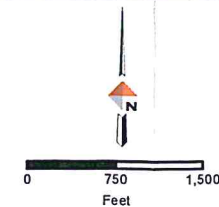
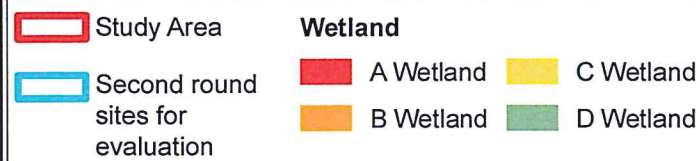
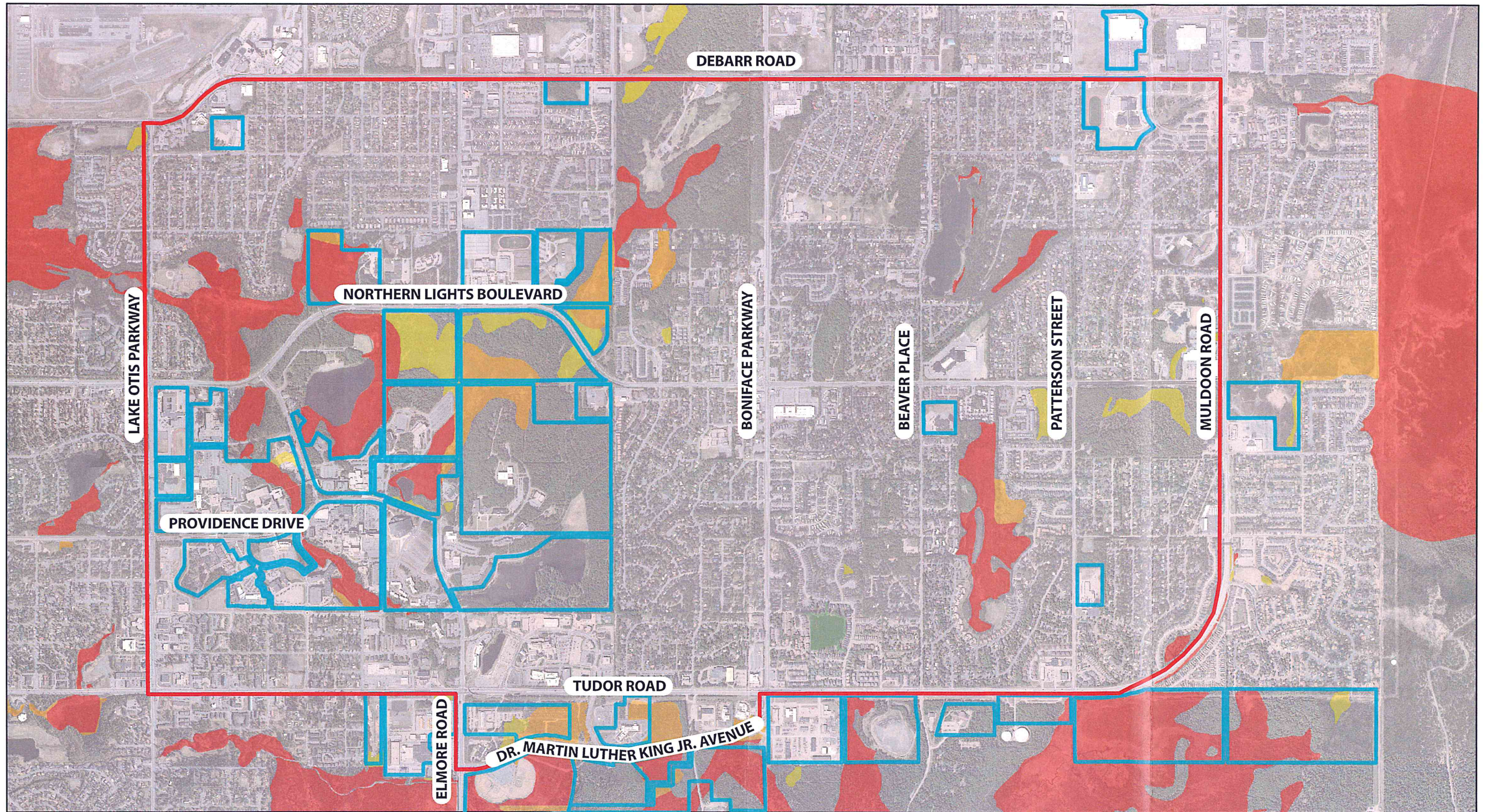


- Study Area
 - Initial Sites Selected
 - Second Round Sites Selected
 - Final Sites for Evaluation
- ① Site ID Number



Sites for Evaluation	
ASD Student Transportation Maintenance Facility Site Selection Study	
Date: August 31, 2018	Figure 2





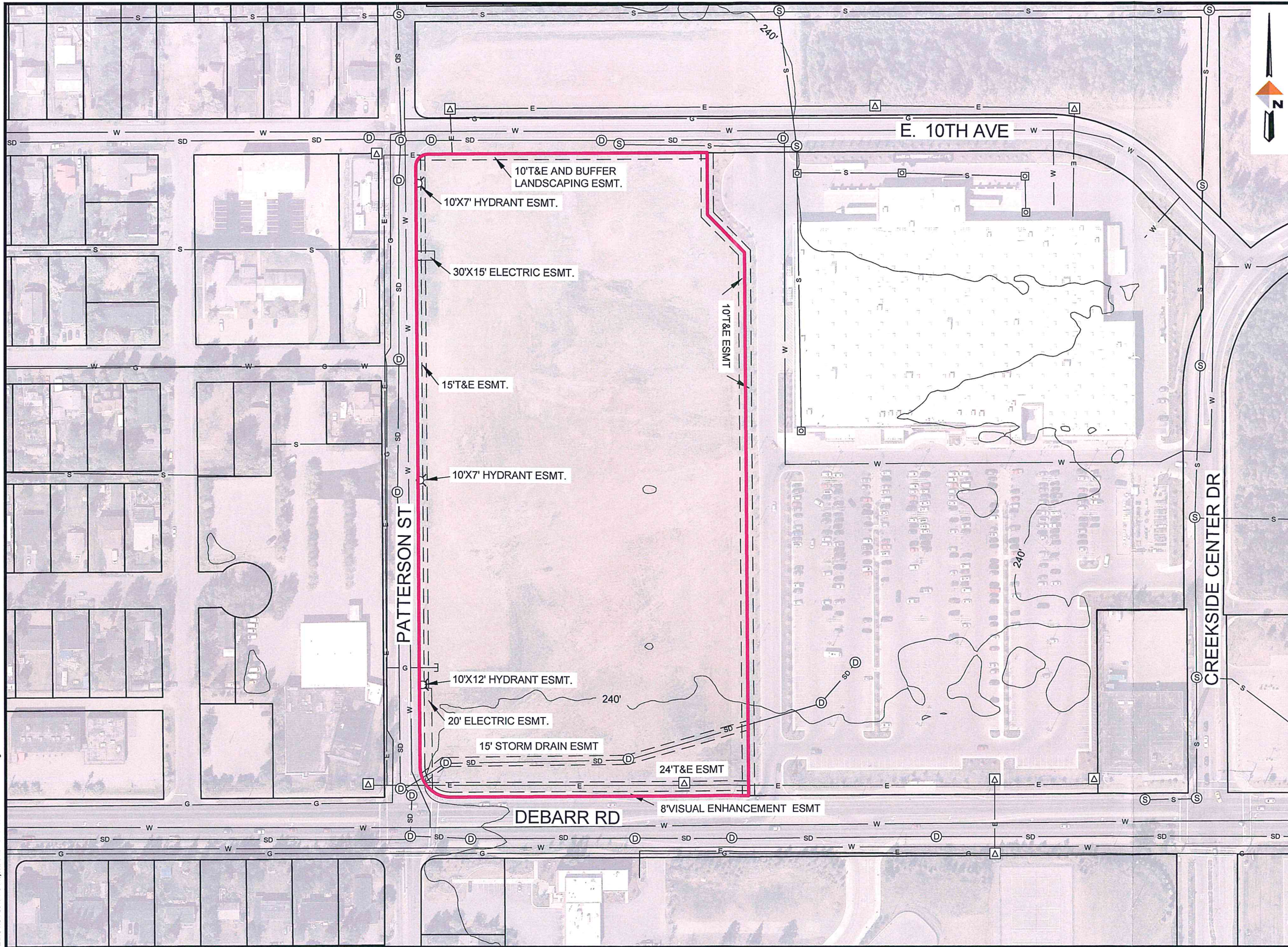
Wetland Map	
ASD Student Transportation Maintenance Facility Site Selection Study	
	Date: August 31, 2018
Figure 3	

APPENDIX A

Appendix A- Site Evaluation Matrix					
ASD Student Transportation Maintenance Facility Site Evaluation Matrix					
LOCATION	Site 13	Site 18	Site 21	Site 22	Site 27
Physical Location (address and legal)	Creekside Tract A	T13N R3W SEC 35 N2NE4NE4 6790 East Tudor Road	Tudor Municipal Campus Tract 6	2955 Muldoon Road	4501 Elmore Road Tudor Municipal Campus Tract 2
Parcel ID Number	006-411-19	007-261-01 / 007-261-06	008-121-08	007-291-07	008-091-16
Zoning District	Light Industrial (I1) District	PLI District	PLI District	Two-Family Residential (R-2A) District	PLI District
Land Use Entitlement Action Required	None	Major Site Plan Review	Major Site Plan Review	Rezone and Major Site Plan Review	Major Site Plan Review
Adjacent Land Use	Town Center, Community Facility or Institution, Compact Mixed-Residential	Community Facility or Institution, Park or Natural Area, Compact Mixed- Residential	Community Facility or Institution, Park or Natural Area	Community Facility or Institution, Compact Mixed-Residential, Town Center	Community Facility or Institution
Adjacent Zoning District	I-1, PLI, R-3	PLI	PLI	B-4, R-2A, R-1A	PLI
Significant Zoning Restrictions	No zoning restrictions but use not in line with 2040 LUP or EADP land use designations	None	No zoning restrictions but use not in line with 2040 LUP or 3500 Tudor Master Plan	Prohibited use under current zoning designation	None
Seismic Zone	2- Moderate-Low	2 & 3- Moderate & Moderate-Low	2- Moderate-Low	3- Moderate	3- Moderate
FUNCTION					
Owner	Wal-Mart Stores INC.	MOA	MOA	MOA	MOA
Size of Site	12.81 acres	21.6 acres	19.82 acres	24.83 acres	25.7
Soils/Drainage	Poor due to possible unknown materials on-site and contamination	Suitable	Suitable	Uncontrolled; likley requiring very deep excavation	Suitable following Class C wetland mitigation
Environmental Concerns	Unknown	Unknown	Unknown	Unknown	Unknown
Accessibility	Debarr Road and Patterson Street	Muldoon Road and Campbell Airstrip Road	Dr. Martin Luther King Jr. Avenue	Muldoon Road	Dr. Martin Luther King Jr. Avenue and Tudor Centre Drive
Adjacent Road Classifications	Major arterial and neighborhood collector	Major arterial and local road	Minor arterial	Major arterial	Minor arterial
Signal	Yes	No	Yes	Yes	Yes
Utility Availability	Yes	Yes	Yes	Yes	Yes
Site Acquisition Cost	\$5,581,000				
TIMING					
Site Acquisition Time	Unknown- site currently not for sale	MOA Owned	MOA Owned	MOA Owned	MOA Owned
Land Use Entitlement Action Timing	N/A	MSPR: 4 months	MSPR: 4 months	Rezone: 6-9 months MSPR: 4 months	MSPR and Plat Note Modification: 4 months
Miscellaneous					Plat 2009-016 restricts direct access on to Tudor Center Drive, plat note will need to be modified or removed.

APPENDIX B

\\ANC-HQ-FS01\ANC-Projects\3262707-0165CAD\ASD SITE 13.dwg PLOT DATE 2018-11-13 14:53 SAVED DATE 2018-04-13 14:49 USER: mdavis



LEGEND

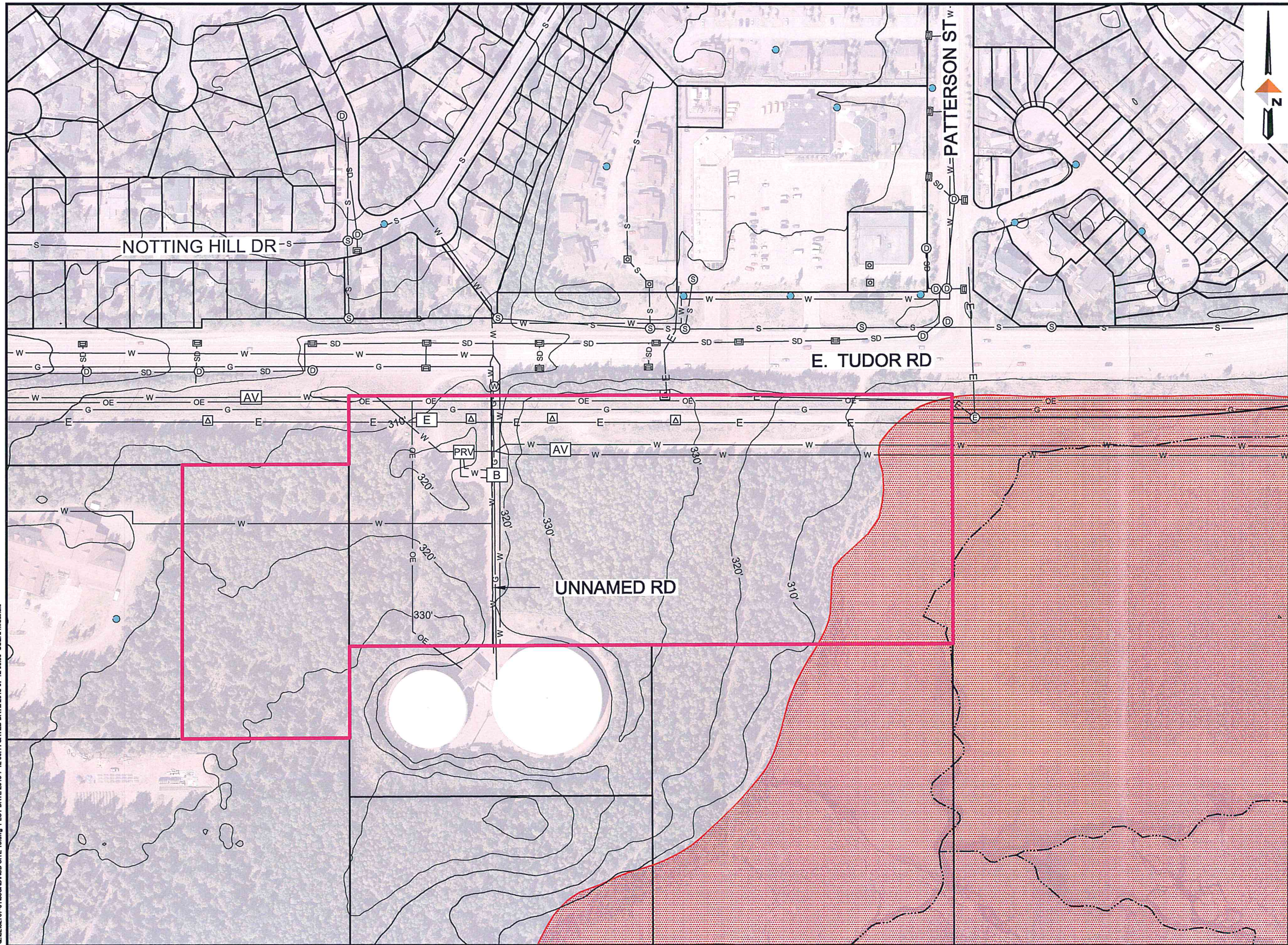
- ANALYZED SITE
- GAS UTILITY
- WATER UTILITY
- SEWER UTILITY
- STORM DRAIN UTILITY
- ELECTRIC UTILITY
- CONTOUR LINE

ASD STUDENT TRANSPORTATION FACILITY
SITE SELECTION STUDY
ANCHORAGE, ALASKA



PROJECT	1132.62707.01
DATE	008/31/2018
GRID	1340
SITE 13	
EXISTING CONDITIONS	

Q:\3262707-0\BSCAD\ASD SITE 18.dwg PLOT DATE 2018-12-06 11:06:41 SAVED DATE 2018-07-12 06:39 USER: murchad



LEGEND

- ANALYZED SITE
- GAS UTILITY
- WATER UTILITY
- SPECIAL WATER VAULT (PRV, B, AV)
- SEWER UTILITY
- STORM DRAIN UTILITY
- ELECTRIC UTILITY
- CONTOUR LINE
- CLASS "A" WETLAND

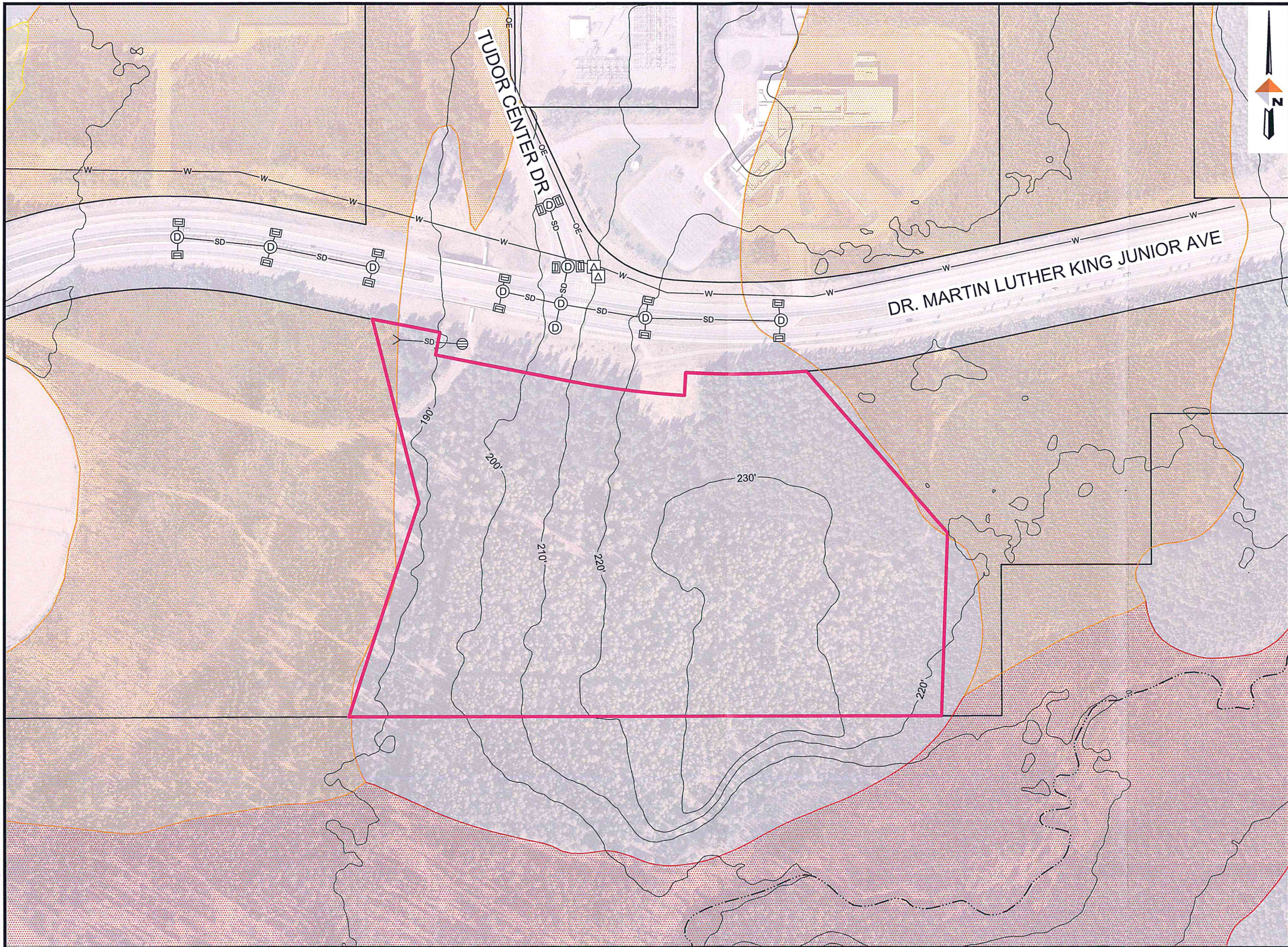
ASD STUDENT TRANSPORTATION FACILITY
SITE SELECTION STUDY
ANCHORAGE, ALASKA


DOWL
www.dowl.com

PROJECT	1132.62707.01
DATE	08/31/2018
GRID	1839

SITE 18
EXISTING CONDITIONS

\\ANC-HG-FS01\ANC-Projects\3262707-01\65CAD\ASD SITE 21.dwg PLOT DATE 2018-11-13 14:40 SAVED DATE 2018-04-13 13:44 USER: mdavis





LEGEND

- ANALYZED SITE
- W WATER UTILITY
- SD STORM DRAIN UTILITY
- SD STORM DRAIN UTILITY
- OE ELECTRIC UTILITY
- 240' CONTOUR LINE
- CLASS "A" WETLAND
- CLASS "B" WETLAND

ASD STUDENT TRANSPORTATION FACILITY
SITE SELECTION STUDY
ANCHORAGE, ALASKA

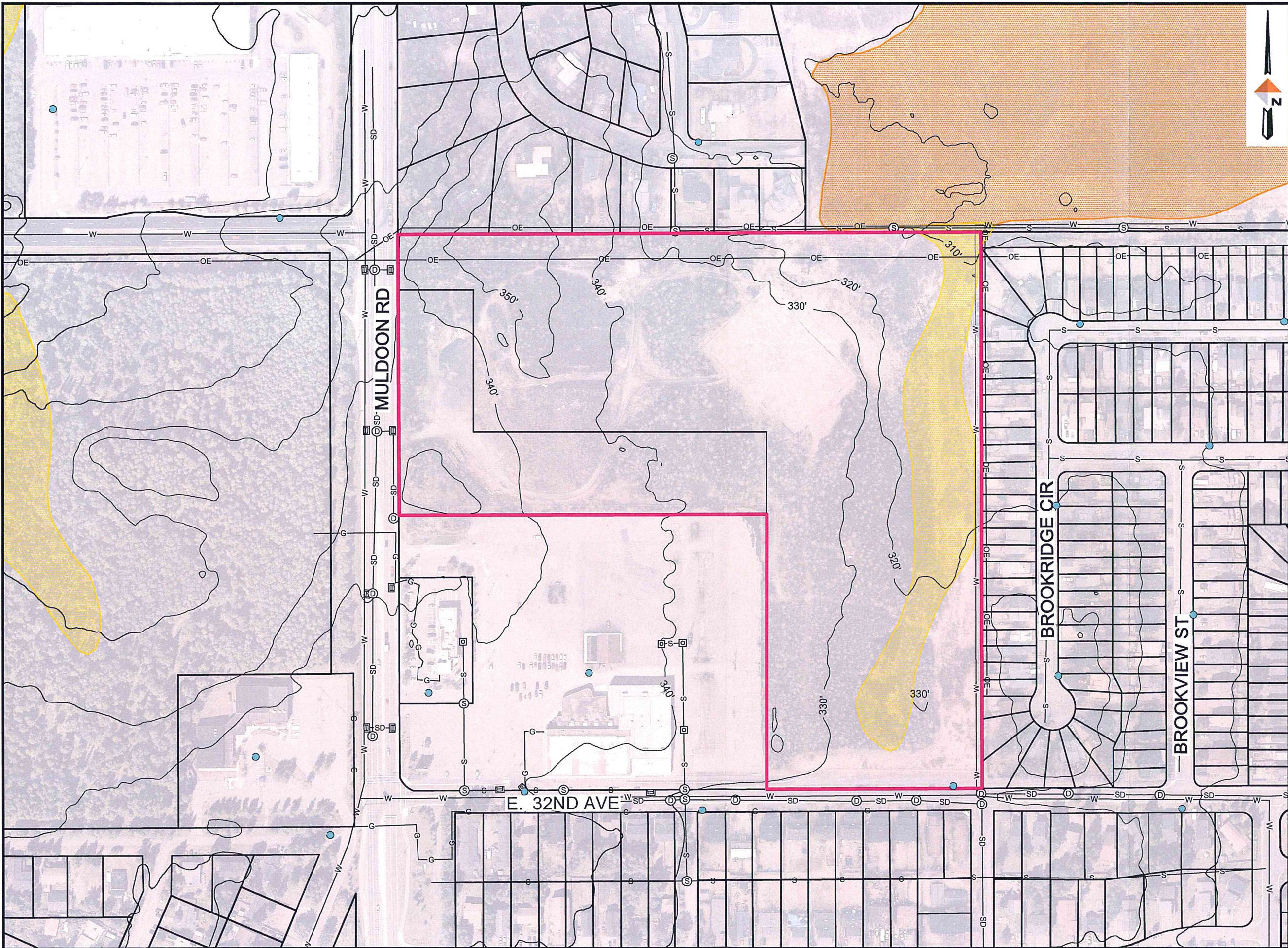


DOWL
WWW.DOWL.COM

PROJECT	1132.62707.01
DATE	08/31/2018
GRID	1836

SITE 21
EXISTING CONDITIONS

C:\3262707-01\55CAD\ASD SITE 22.dwg PLOT DATE 2018-12-06:43 SAVED DATE 2018-07-12 06:42 USER: mmuchnik



LEGEND	
	ANALYZED SITE
	GAS UTILITY
	WATER UTILITY
	SEWER UTILITY
	STORM DRAIN UTILITY
	ELECTRIC UTILITY
	CONTOUR LINE
	CLASS "B" WETLAND
	CLASS "C" WETLAND

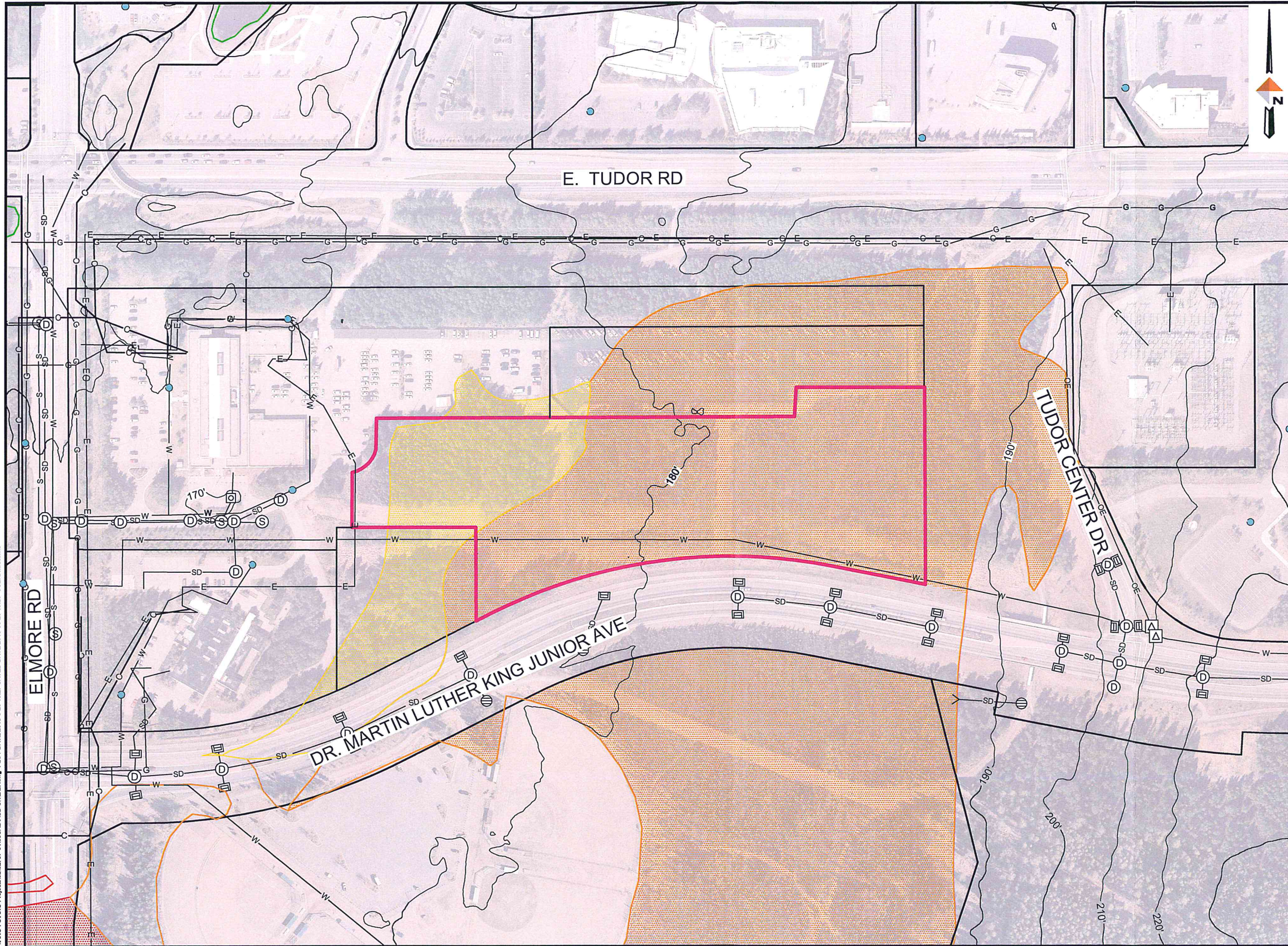
ASD STUDENT TRANSPORTATION FACILITY
SITE SELECTION STUDY
ANCHORAGE, ALASKA



PROJECT	1132.62707.01
DATE	08/31/2018
GRID	1641

SITE 22
EXISTING CONDITIONS

\\AWC-FS\AWC-Projects\13262707-01\ASD\ASD SITE 27.dwg PLOT DATE 2018-08-20 15:27 SAVED DATE 2016-08-20 15:28 USER: mmudskid



LEGEND

- ANALYZED SITE
- W — WATER UTILITY
- SD — STORM DRAIN UTILITY
- S — SEWER UTILITY
- E — ELECTRIC UTILITY
- G — NATURAL GAS UTILITY
- C — COMMUNICATION LINE
- 240' — CONTOUR LINE
- CLASS "C" WETLAND
- CLASS "B" WETLAND

ASD STUDENT TRANSPORTATION FACILITY
SITE SELECTION STUDY
ANCHORAGE, ALASKA


DOWL
WWW.DOWL.COM

PROJECT	1132.62707.01
DATE	08/31/2018
GRID	1836

SITE 27
EXISTING CONDITIONS

MUNICIPALITY OF ANCHORAGE



Heritage Land Bank

907-343-7534

Mayor Ethan A. Berkowitz

October 3, 2018

Michelle McNulty
Director of Planning

Dear Michelle:

This letter will serve as a written summary of the community meeting, as required by Title 21, for the application to request a public hearing at the Planning and Zoning Commission for the Site Selection Study to relocate the ASD Student Transportation Facility.

Notice for the meeting went out to: the Federation of Community Councils, and Basher, Campbell Park, Northeast, Scenic Foothills, Tudor Area, and University Area Community Councils. Cards were mailed to 255 occupants surrounding the two recommended sites; 750 feet from one site and 1,600 feet for the other site in order to meet the noticing requirements in Title 21.

Municipal staff made a presentation to the public on October 2, 2018 with approximately 87 people in attendance.

The presentation included:

1. The purpose of initiating the site selection study process is to identify potential locations to relocate the current ASD Student Transportation Facility in order to allow redevelopment of that site.
2. Describing the study area, the initial identified sites, how the sites were narrowed down to five sites and, finally, narrowed down to the two recommended sites.
3. Detailed information on the two recommended sites.
4. The process and timeline for Planning and Zoning Commission public hearing and a final approval of the site selection study by the Anchorage Assembly.

Questions and concerns voiced by attendees:

1. Traffic impacts at the Campbell Airstrip Road/Tudor Road intersection when introducing school bus, bus driver and staff activity if Site #18 was selected.
2. The impacts of bus diesel fumes and noise on surrounding neighborhoods if Site #18 was selected.
3. Concerns that Site #22 was included in the study even after Mayor Berkowitz stated that the bus facility would not be relocated to that site.

4. Near the end of the meeting, the audience took a straw vote and Site #27 had no objections; but the vast majority of the attendees objected to using Site #18.

Sincerely,

A handwritten signature in blue ink that reads "Robin E. Ward". The signature is written in a cursive, flowing style.

Robin E. Ward, Director
Real Estate Department

MOA

P.O. BOX 196650
Anchorage AK 99519

FIRST-CLASS MAIL
U.S. POSTAGE PAID
Anchorage, Alaska
Permit No. 202

You are invited to attend a
Public Facility Site
Selection community
meeting to hear about the
proposed relocation of the
ASD Student Transportation
Facility. The meeting will be
held at the Permit &
Development Center, located
at 4700 Elmore Rd., on

Resident
4443 DIPLOMACY DR

October 15, 1995 DE 1 0000/13/18

RETURN TO SENDER
NO SUCH NUMBER
UNABLE TO FORWARD

BC: 99519665050 *1595-04970-10-40

NSN

Public Facility Site Selection

TO RELOCATE THE ANCHORAGE SCHOOL DISTRICT STUDENT TRANSPORTATION FACILITY

community meeting

<http://www.muni.org/Departments/hib/Pages/default.aspx>



MOA
P.O. BOX 196650
Anchorage AK 99519

You are invited to attend a
Public Facility Site
Selection community
meeting to hear about the
proposed relocation of the
ASD Student Transportation
Facility. The meeting will be
held at the Permit &
Development Center, located
at 4700 Elmore Rd., on
October 2, 2018 at 6:00-
7:30pm. If you would like
more information, please
contact Robin Ward at 907-
343-7536 or
WardRE@muni.org.

MUNICIPALITY OF ANCHORAGE



Heritage Land Bank

907-343-7534

Mayor Ethan A. Berkowitz

October 10, 2018

Michelle McNulty
Director of Planning

Dear Michelle:

This letter will serve as a written summary of the presentation by the Municipality of Anchorage (MOA) staff held at the Anchorage School District (ASD) work session on September 10, 2018 regarding the Site Selection Study to relocate the ASD Student Transportation Facility. A copy of the power point presentation is attached.

For the past several Joint Meetings of the ASD Board and Anchorage Assembly, updates on the site selection process have been given to the group with a promise that the final draft of the report would be publically unveiled at an ASD School Board work session.

The presentation included:

1. Reiterating the purpose of initiating the site selection study process to identify potential locations to relocate the current ASD Student Transportation Facility in order to allow redevelopment of that site.
2. Describing the study area, the initial identified sites, how the sites were narrowed down to five sites and, finally, narrowed down to the two recommended sites.
3. Detailed information on the two recommended sites.
4. The process and timeline for Planning and Zoning Commission public hearing and a final approval of the site selection study by the Anchorage Assembly.

Comments by Dave Donley and Alisha Hilde centered on the fact that this was not an ASD project, but a municipal project, and that no funds were going to be contributed by ASD and no additional operational costs were going to be incurred by the ASD Transportation Department with the proposed relocation.

Sincerely,

Robin E. Ward, Director
Real Estate Department

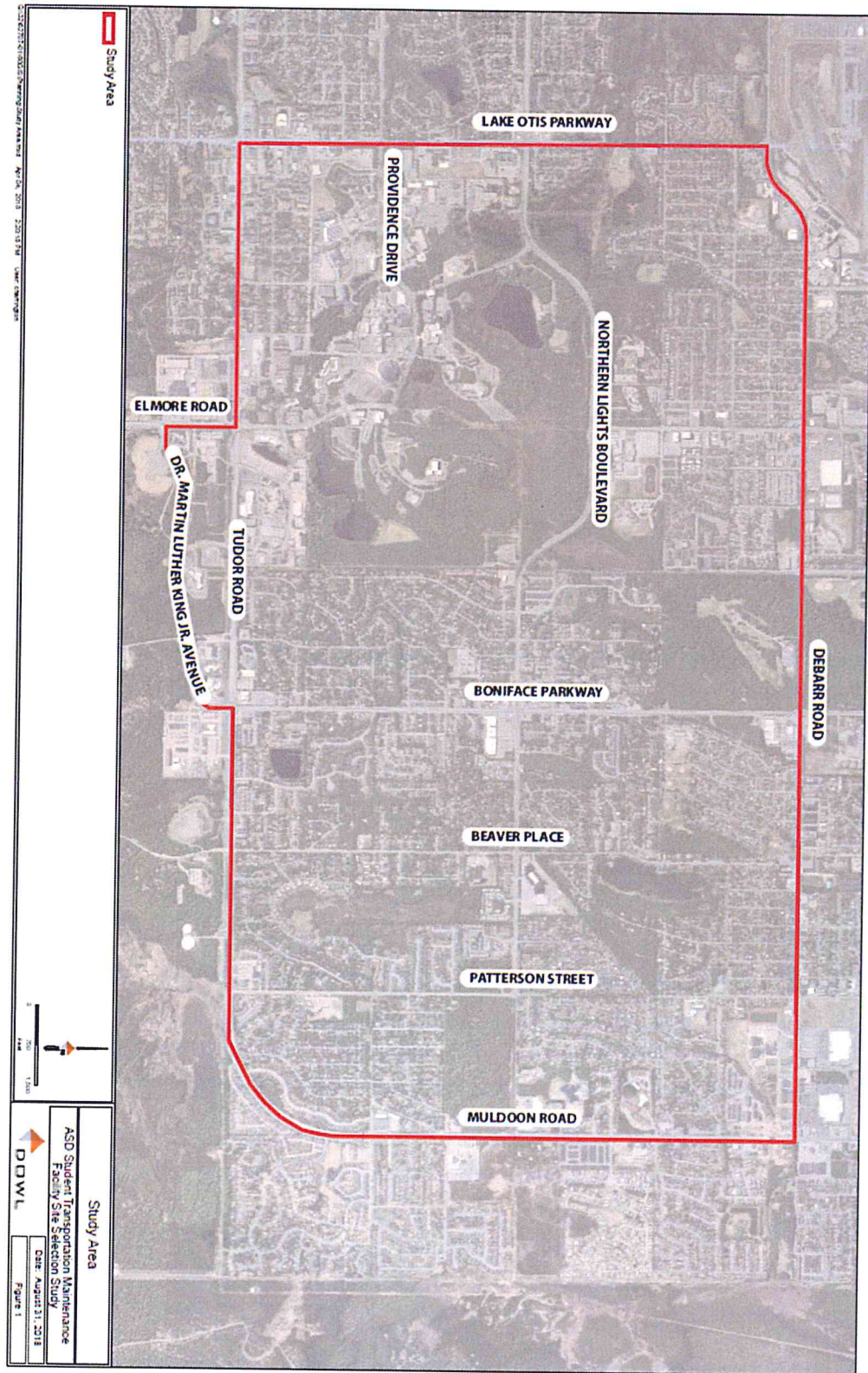
Public buildings or facilities, such as the ASD Student Transportation Maintenance Facility, are subject to a Public Facility Site Selection Study under Anchorage Municipal Code (AMC) 21.03.140. The purpose of this study is to document the analysis of alternative sites evaluated for the relocation of the ASD Student Transportation Maintenance Facility and to provide the MOA with the results of this analysis and a recommendation for suitable sites for its relocation.

SITE SELECTION STUDY

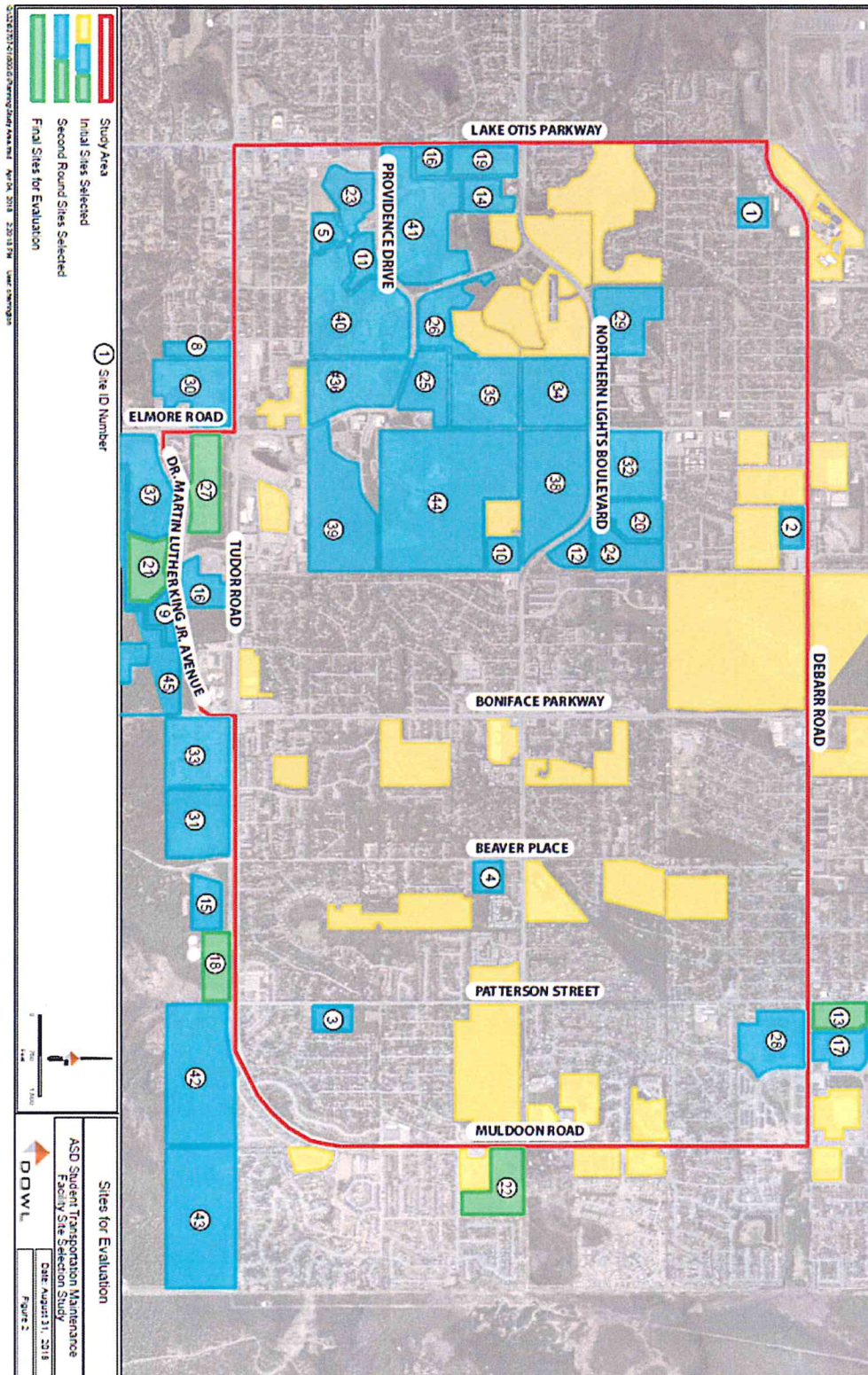
Municipality of Anchorage
Anchorage School District
Student Transportation Maintenance Facility

September 2018

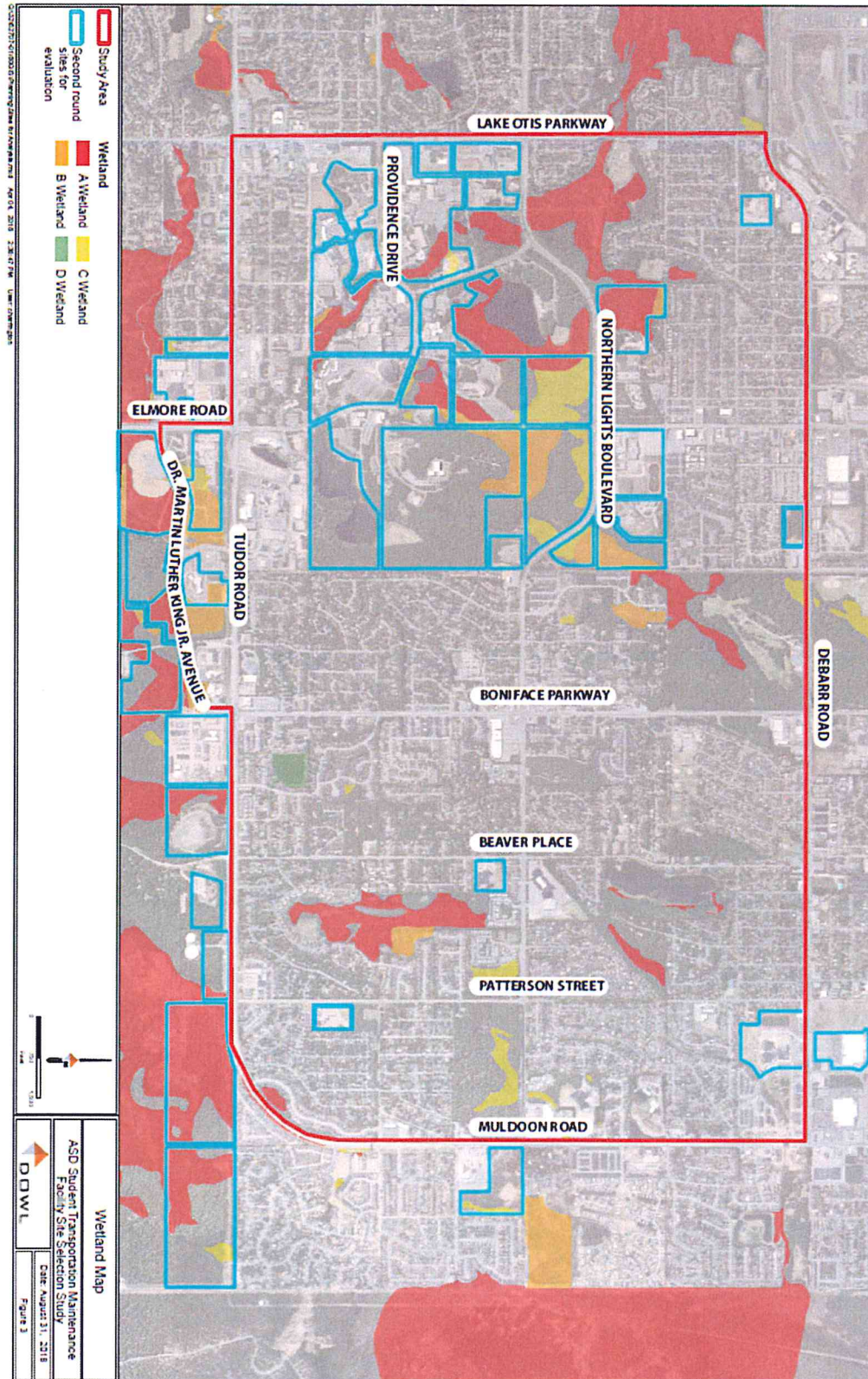
STUDY AREA



INVENTORY



WETLANDS

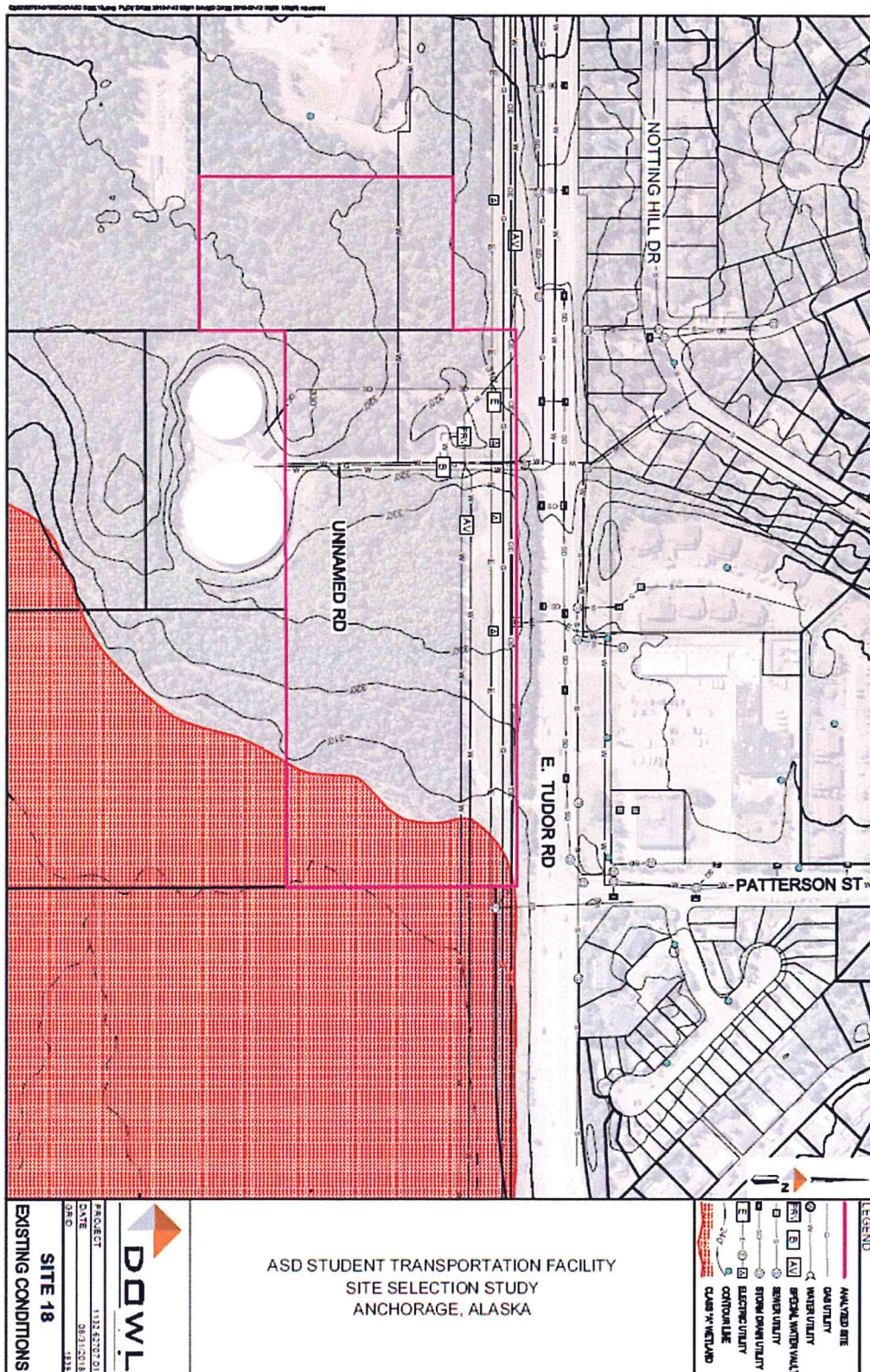


FINAL SITES FOR EVALUATION

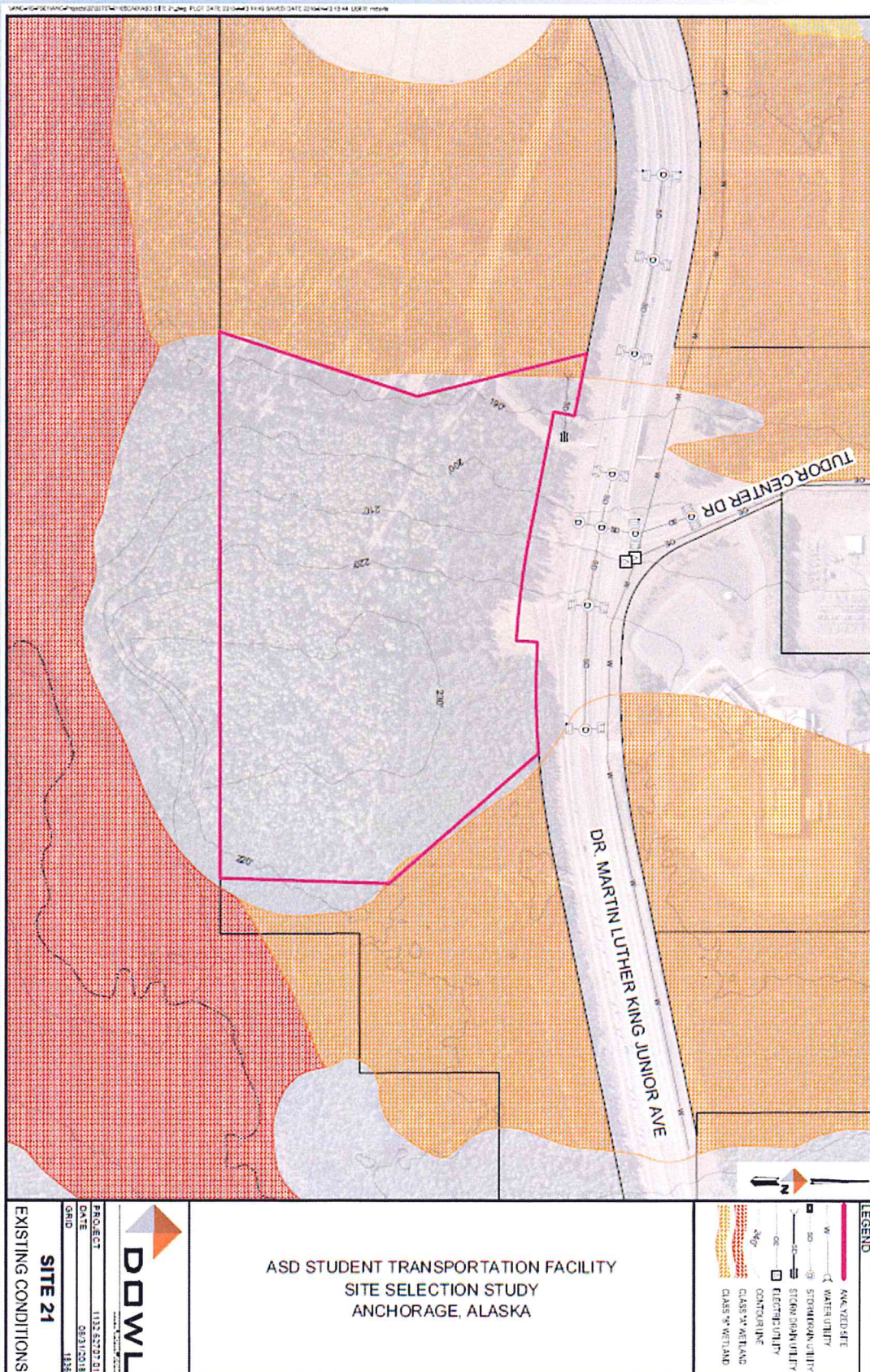
Appendix A- Site Evaluation Matrix						
ASD Student Transportation Maintenance Facility Site Evaluation Matrix						
LOCATION	Site 13	Site 18	Site 21	Site 22	Site 27	
Physical Location (address and legal)	Creekside Tract A	T13N R3W SEC 35 N2NE4NE4 6790 East Tudor Road	Tudor Municipal Campus Tract 6	2955 Muldoon Road	4501 Elmore Road Tudor Municipal Campus Tract 2	
Parcel ID Number	006-411-19	007-291-07	008-121-08	007-291-07	008-091-16	
Zoning District	Light Industrial (I1) District	PLU District	PLU District	Two-Family Residential (R-2A) District	PLU District	
Land Use Entitlement	None	Major Site Plan Review	Major Site Plan Review	Rezoning and Major Site Plan Review	Major Site Plan Review	
Action Required						
Adjacent Land Use	Town Center, Community Facility or Institution, Compact Mixed-Residential	Community Facility or Institution, Park or Natural Area, Compact Mixed-Residential	Community Facility or Institution, Park or Natural Area	Community Facility or Institution, Compact Mixed-Residential, Town Center	Community Facility or Institution	
Adjacent Zoning District	I-1, PLU, R-3	PLU	PLU	B-4, R-2A, R-1A	PLU	
Significant Zoning Restrictions	No zoning restrictions but use not in line with 2040 LUP or EADP land use designations	None	No zoning restrictions but use not in line with 2040 LUP or 3500 Tudor Master Plan	Prohibited use under current zoning designation	None	
Seismic Zone	2- Moderate-Low	2, B, 3- Moderate & Moderate-Low	2- Moderate-Low	3- Moderate	3- Moderate	
FUNCTION						
Owner	Wal-Mart Stores INC.	MOA	MOA	MOA	MOA	
Size of Site	12.81 acres	21.6 acres	19.82 acres	24.83 acres	25.7	
Soils/Drainage	Poor due to possible unknown materials on-site and contamination	Suitable	Suitable	Uncontrolled; likely requiring very deep excavation	Suitable following Class C wetland mitigation	
Environmental Concerns	Unknown	Unknown	Unknown	Unknown	Unknown	
Accessibility	Debart Road and Patterson Street	Muldoon Road and Campbell Airport Road	Dr. Martin Luther King Jr. Avenue	Muldoon Road	Dr. Martin Luther King Jr. Avenue and Tudor Centre Drive	
Adjacent Road Classifications	Major arterial and neighborhood collector	Major arterial and local road	Minor arterial	Major arterial	Minor arterial	
Signal	Yes	No	Yes	Yes	Yes	
Utility Availability	Yes	Yes	Yes	Yes	Yes	
Site Acquisition Cost	\$5,581,000					
TIMING						
Site Acquisition Time	Unknown- site currently not for sale	MOA Owned	MOA Owned	MOA Owned	MOA Owned	
Land Use Entitlement	N/A	MSPR- 4 months	MSPR- 4 months	Rezoning: 6-9 months MSPR- 4 months	MSPR and Plat Note Modification: 4 months	
Action Timing						
Miscellaneous					Plat 2009-016 restricts direct access on to Tudor Center Drive, plat note will need to be modified or removed.	

[illegible]

SITE 18



SITE 21



**ASD STUDENT TRANSPORTATION FACILITY
SITE SELECTION STUDY
ANCHORAGE, ALASKA**

LEGEND

- AIRFIELD SITE
- GAS UTILITY
- WATER UTILITY
- SEWER UTILITY
- STORM DRAIN UTILITY
- ELECTRIC UTILITY
- CONTOUR LINE
- CLASS 1 WETLAND
- CLASS 2 WETLAND

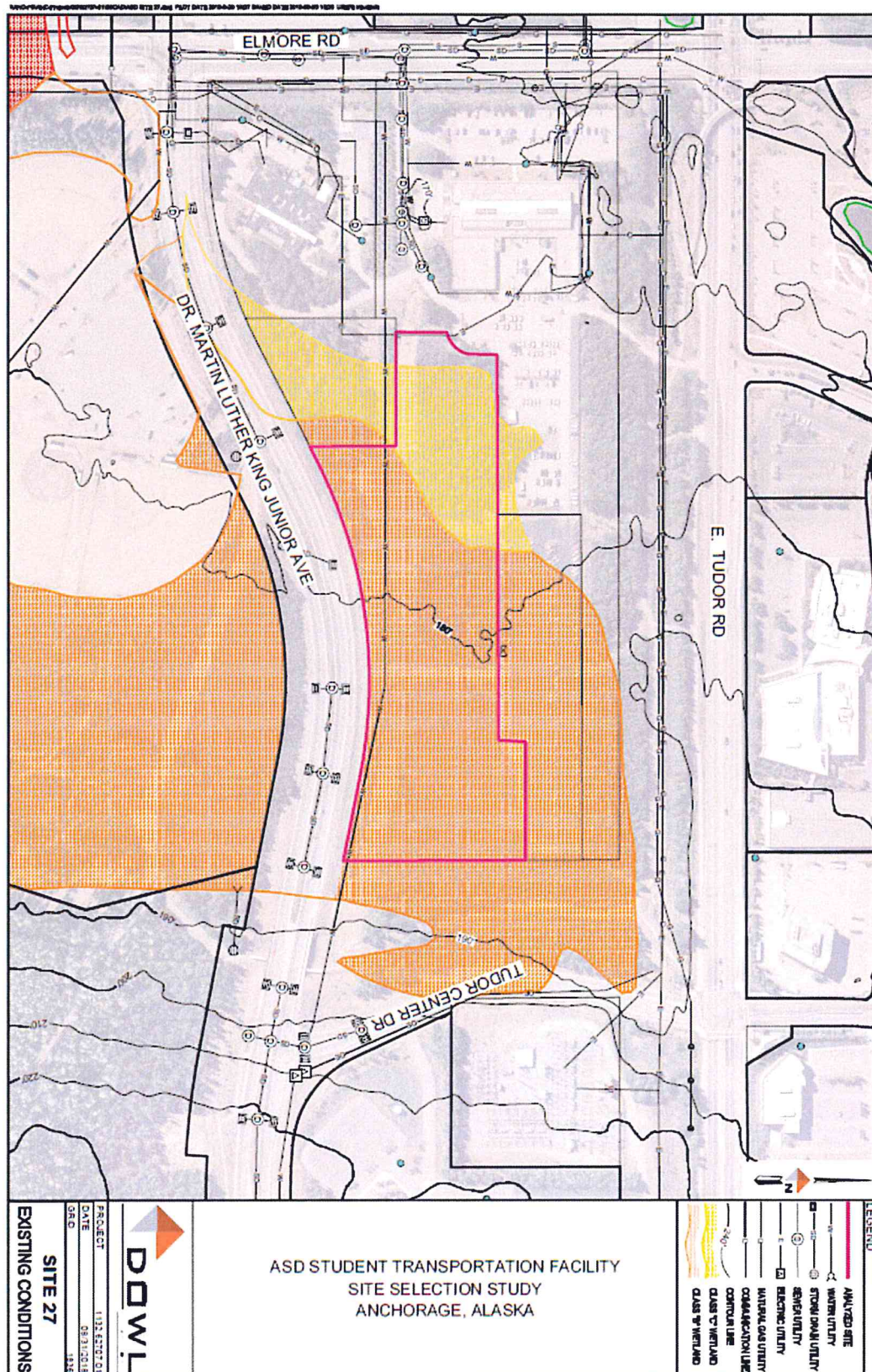
PROJECT 1101-6100201
DATE 09/12/2018
DESIGNER 641

EXISTING CONDITIONS

SITE 22

DOWL

SITE 27



This report recommends Site 18 or 27 as the most suitable for the relocation of the ASD Student Transportation Maintenance Facility.

Site 18 and 27 would maximize the service efficiency while having the least negative impact on the surrounding neighborhoods. Both sites are undeveloped, owned by the MOA, zoned PLI, and this proposed use is supported by the 2040 LUPM.

Site 27 has been found to support community and institutional use during two site selection studies. Site 27 may have higher development costs due to the presence of wetlands.

Next Steps

- ✓ Community Meeting on October 2, 2018 at the Permit Center located at 4700 Elmore Road from 6:00 to 7:30 PM
- ✓ Planning and Zoning Commission
- ✓ ASD Board Meeting
- ✓ Anchorage Assembly