

# SOLID WASTE SERVICES



SWS  
*Materials Recovery  
Facility and  
Merrill Field Update*



re:Made

Plastics

Organics

Central Wood Lot

Cold Weather Shelter

Entrance

# Materials Recovery Facility

# Materials Recovery Facility

- Extend landfill life through material diversion
- Realize efficiencies and reduce:
  - Vehicle miles
  - Diesel consumption
  - CO2 emissions
  - Driver time, wear and tear on vehicles and highway infrastructure
  - Landfill gas and leachate production



# Materials Recovery Facility Entrance

*Thank you for putting less in the landfill and improving local soils!*



## PILOT Program

# Plastic Diversion



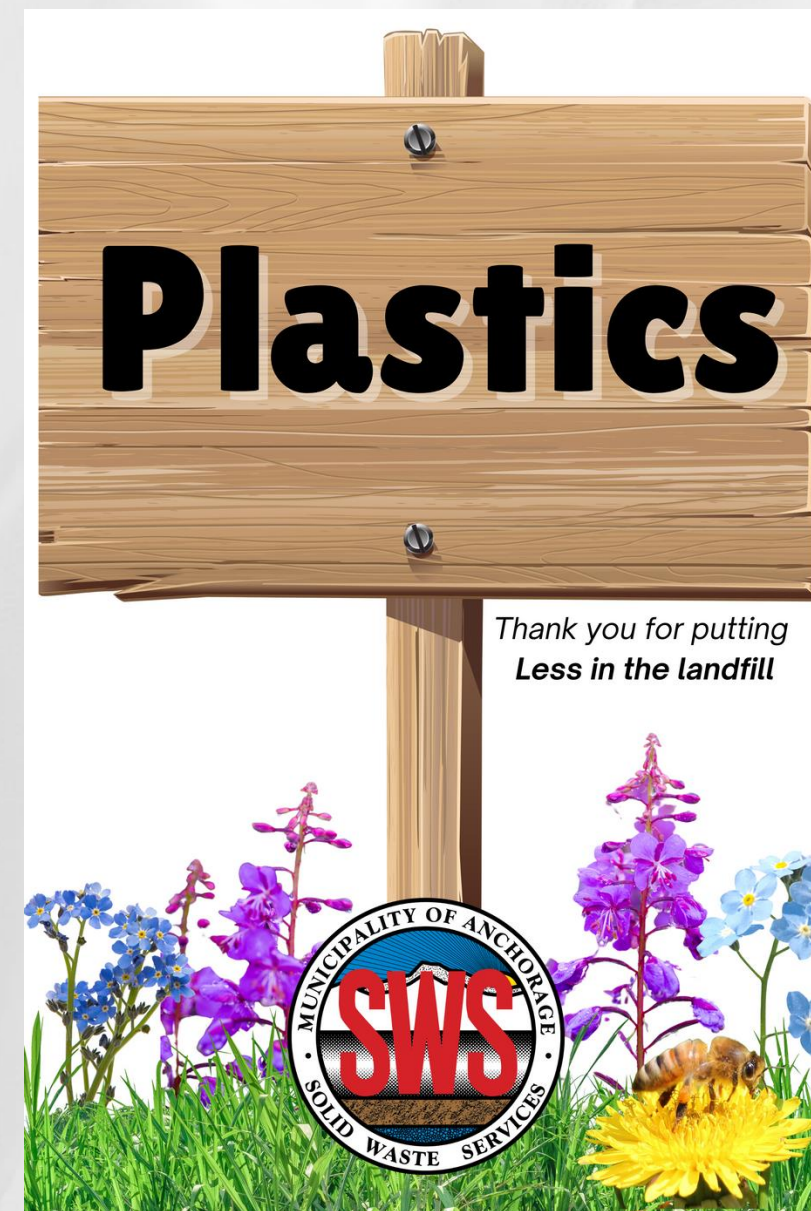
**ALASKA**  
PLASTIC  
RECOVERY

# PUBLIC SORT

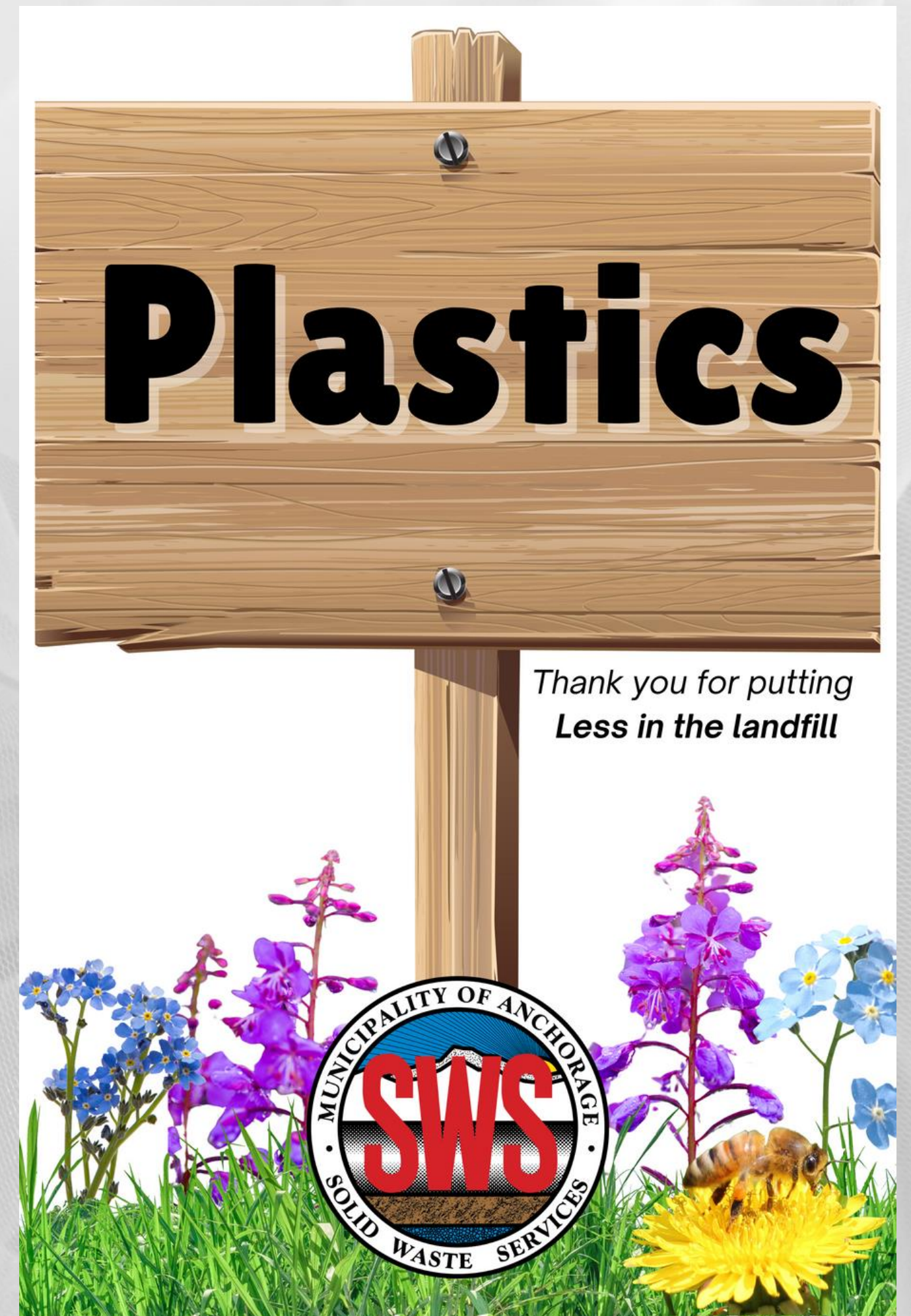
## #1, #2, #5 PLASTICS



# Post Industrial and Post Consumer Plastics



- **Phase One:** Opening this week potentially, the public will sort their own plastics
- **Phase Two:** Starting in a few weeks, APR has one staff who will be on site to sort plastics, answer questions, and swap out super-sacks and monitor progress.
- **Phase Three:** This Fall, APR to have electricity to run equipment to make loads more efficient when transporting to the Mat-Su.





- Opened in May, commercial loads opening soon Thursday, Friday, and Saturday through October
- Tracking feedstocks, volume, traffic etc.
- Food scraps, yard waste, herbivore manure, coffee grounds, wood chips etc.
- Organics transported to the valley used as soil amendment
- Residential 5X8 load \$20
- Larger residential and commercial organic loads \$48.64/Ton
- Pilot program subsidized by the recycling surcharge

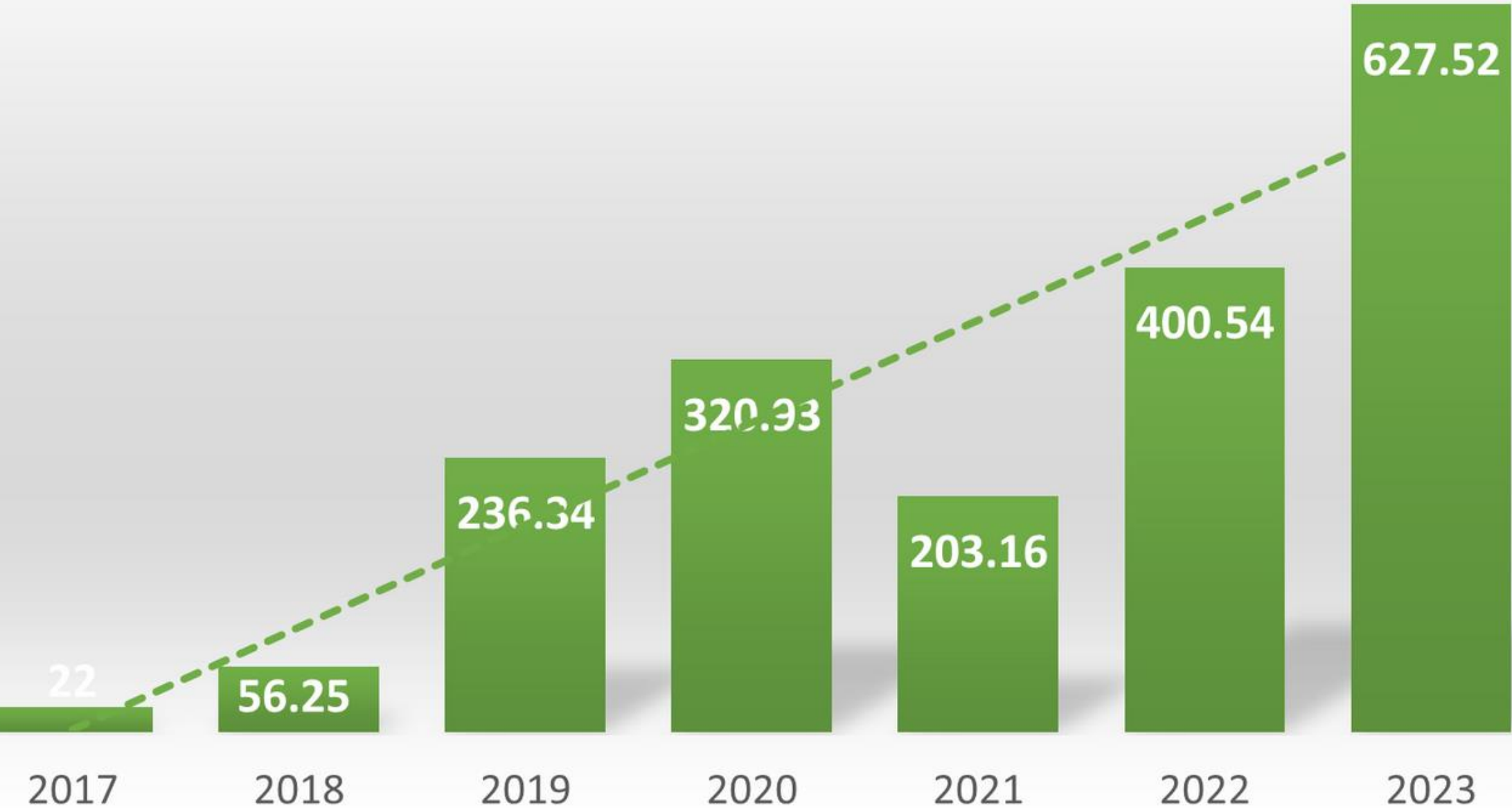




A graphic featuring a wooden sign that says "Organics" in large, bold, black letters with a white outline. Below the sign, a message reads "Thank you for putting Less in the landfill". The graphic also includes the logo for the Municipality of Anchorage Solid Waste Services (SWS), which is a circular emblem with "MUNICIPALITY OF ANCHORAGE" at the top, "SWS" in large red letters in the center, and "SOLID WASTE SERVICES" at the bottom. The logo is surrounded by various colorful flowers, including purple and blue ones, and a bee is shown on a yellow flower in the bottom right corner.

# Expanding Operations

## SWS ORGANICS PROGRAM



May 2023 transferred: 59.38 Tons

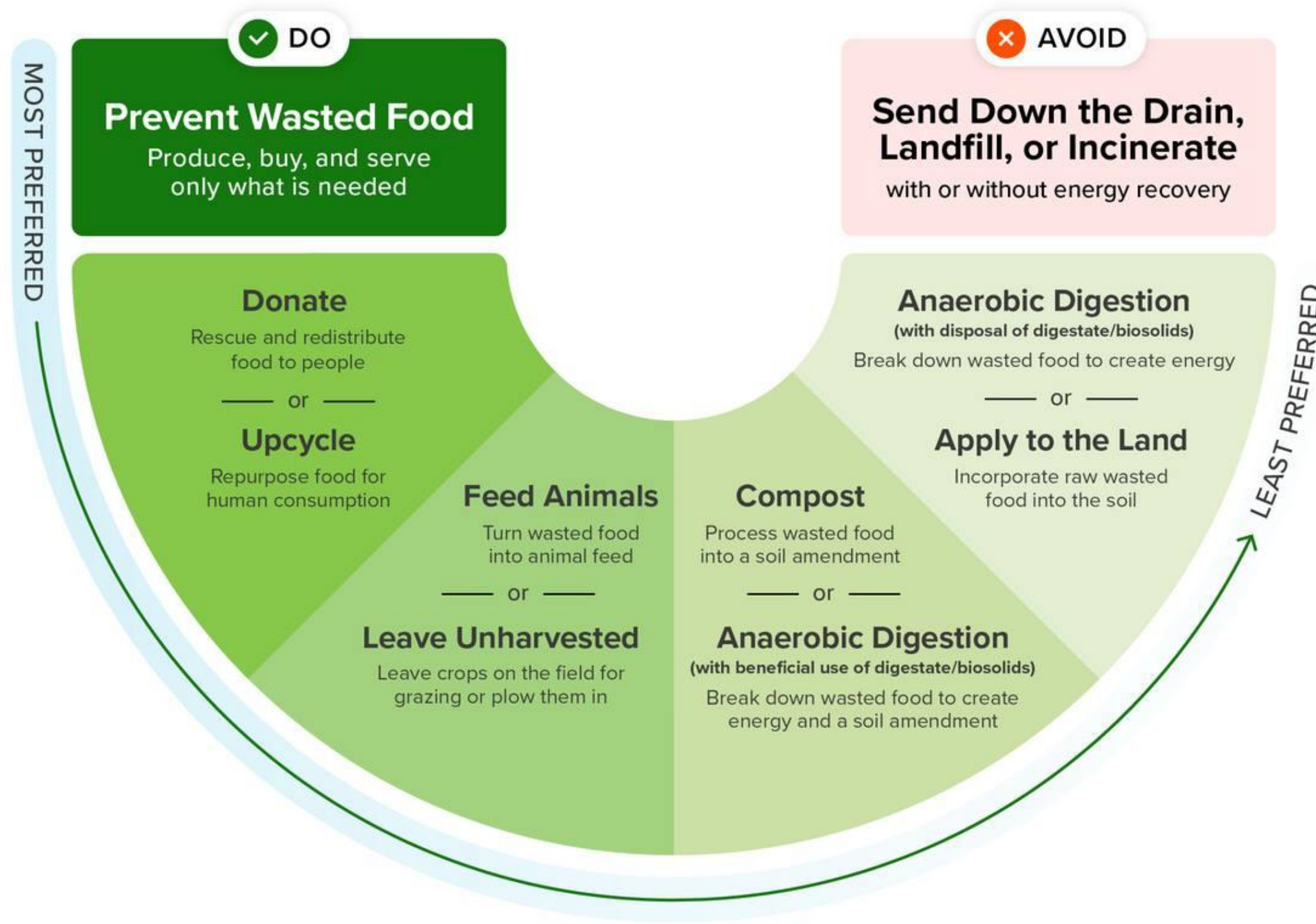
May 2024 transferred: 144.11 Tons





# Wasted Food Scale

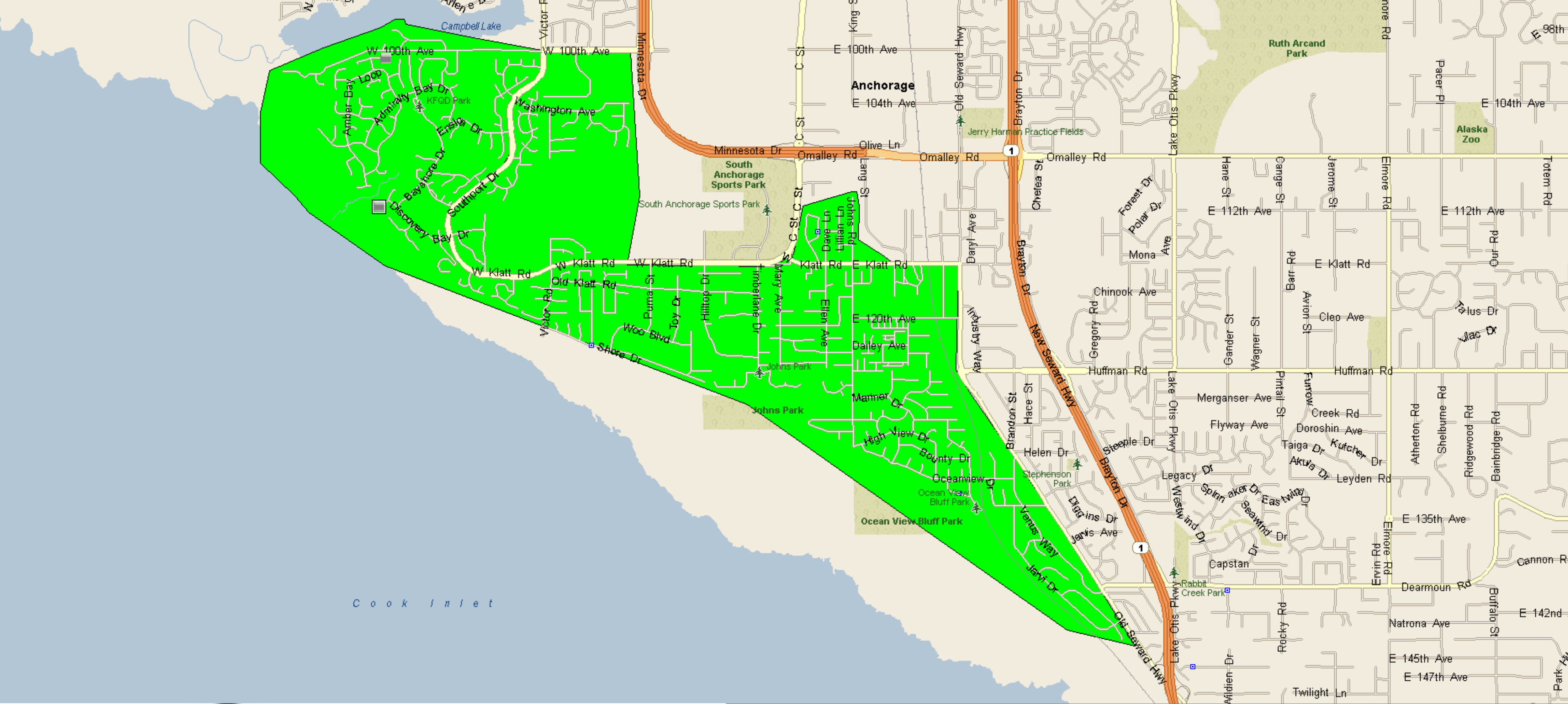
How to reduce the environmental impacts of wasted food



October 2023

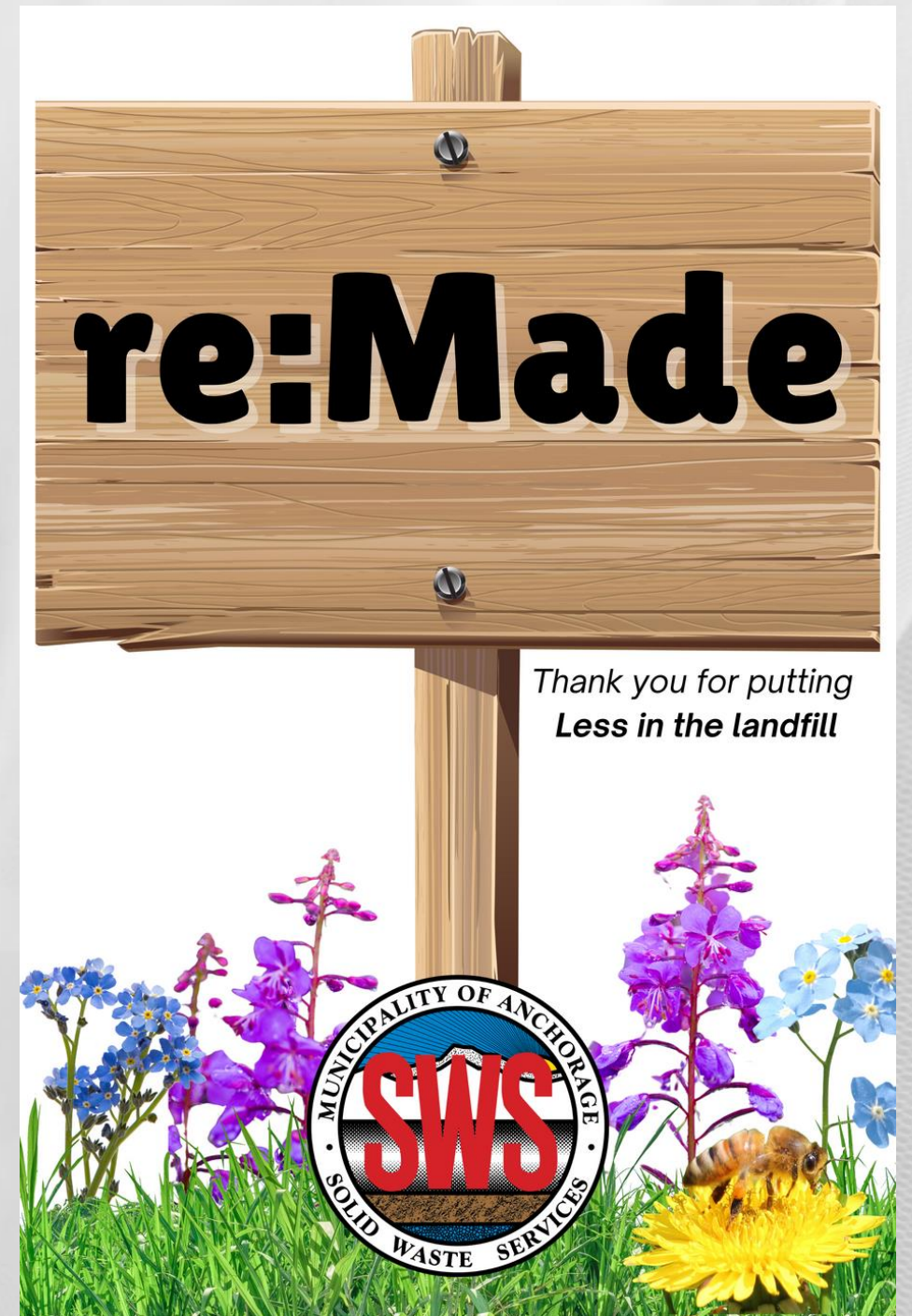






# Alaska Waste

# Expanding Operations



- Opening the “Central Wood Lot” during MRF operations Thursday, Friday, Saturday June - October
- Residential 5X8 loads only: \$20/load  
Commercial loads must go directly to Anchorage Regional Landfill
- Check website for restricted items and sizes
- Partnering with Anchorage Fire Department



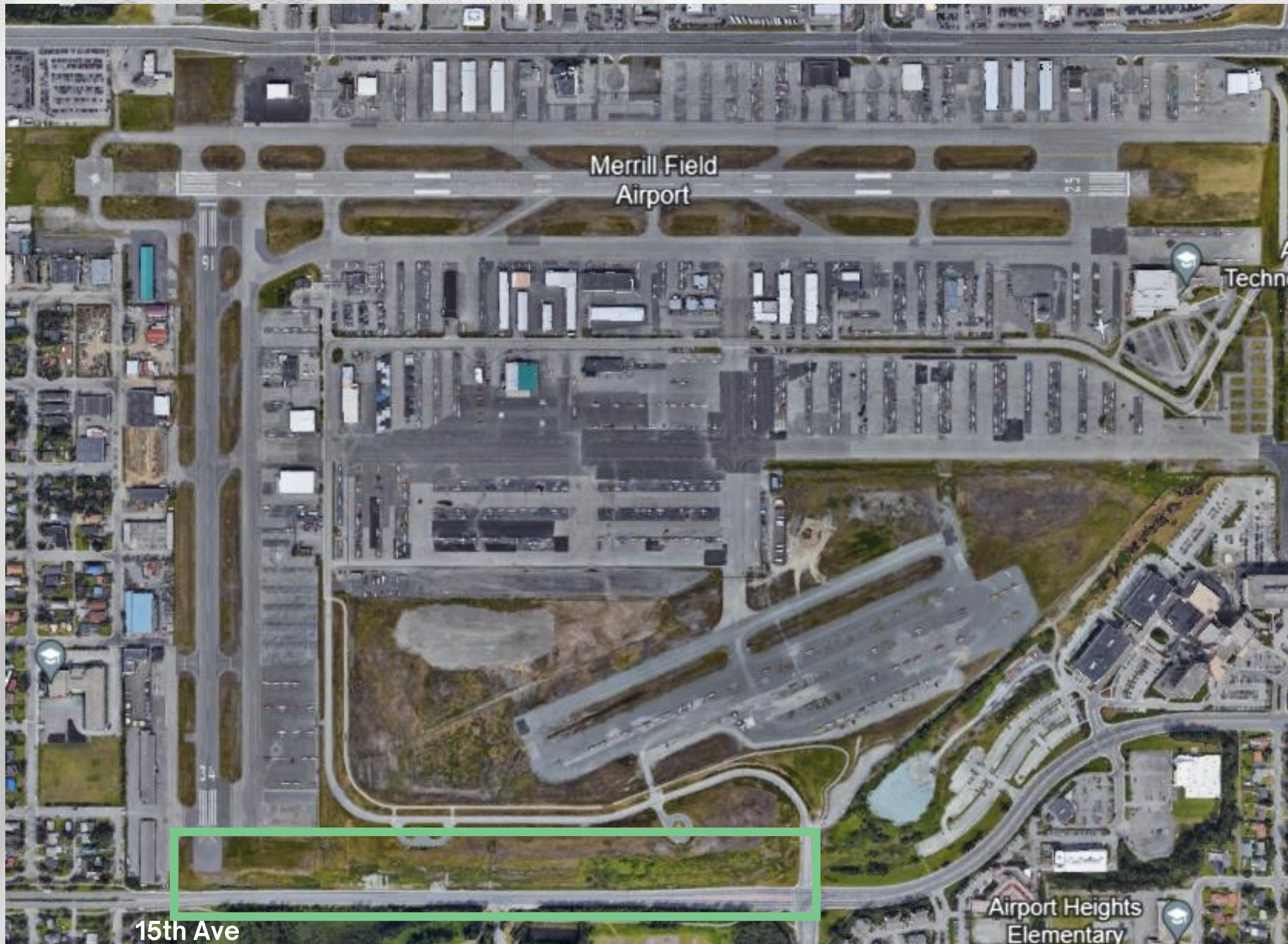


# **Air Quality Permit for the Anchorage Regional Landfill**

## **Compliance Order by Consent**

- 1. Install Gas Collection and Control System 4,000CFM**
- 2. Surface Emissions Monitoring**
- 3. Supplemental Environmental Project:**
  - \$271K in project spend related to emissions reduction**
  - Deep Injection Well or Evaporators**
  - Pivot to MRF Project, will notify ADEC now**

# Merrill Field Update



15th Ave

Google Earth



# **Merrill Field**

## **Dewatering and Landfill Gas Monitoring**



**Landfill Operated in the 1940's and Closed 1987,  
approximately 200 acres**

**Gas monitoring continues stepping up with gas probe.**

**Dewatering well installed this year to relieve pressure.**

# Merrill Field / 15<sup>th</sup> Ave Groundwater Seepage



Looking west from lift station at approx 9:35 AM on 11/22/13





# Upcoming AM

## **Merrill Field Landfill (MFL) Leachate Seep Mitigation Support – (\$146,000)**

- Evaluation of a test well to reduce seepage from the toe of the MFL site along 15th Avenue.
- Seepage causes glaciation on 15th Avenue, which has been identified as a significant traffic and pedestrian hazard in winter.
- ADEC has also expressed concern over the seepage and has indicated that they also receive complaints regarding odors which are sometimes experienced along 15th Avenue.
- SCS will evaluate a test well to reduce elevated water levels present within the old landfill. If effective, SCS will develop a more comprehensive to reduce seepage and landfill gas emissions.

## **Merrill Field Landfill (MFL) Gas Migration Probe Installation – (\$20,000)**

- Subsurface boring and installation of an additional gas migration monitoring probe to the existing gas migration monitoring network.
- Required by the ADEC in correspondence dated October 10, 2023, to be completed during summer of 2024 as an additional location to be monitored to detect if landfill gas is migrating beyond the property boundaries.

**Total from Equity \$166,000**



Kelli Toth  
Solid Waste Services, Acting Director  
907-343-6289

Thank you