



Trash is
Treasure





**Solid Waste Services (SWS),
an Enterprise Utility:**

**Safe
Innovative
Sustainable**

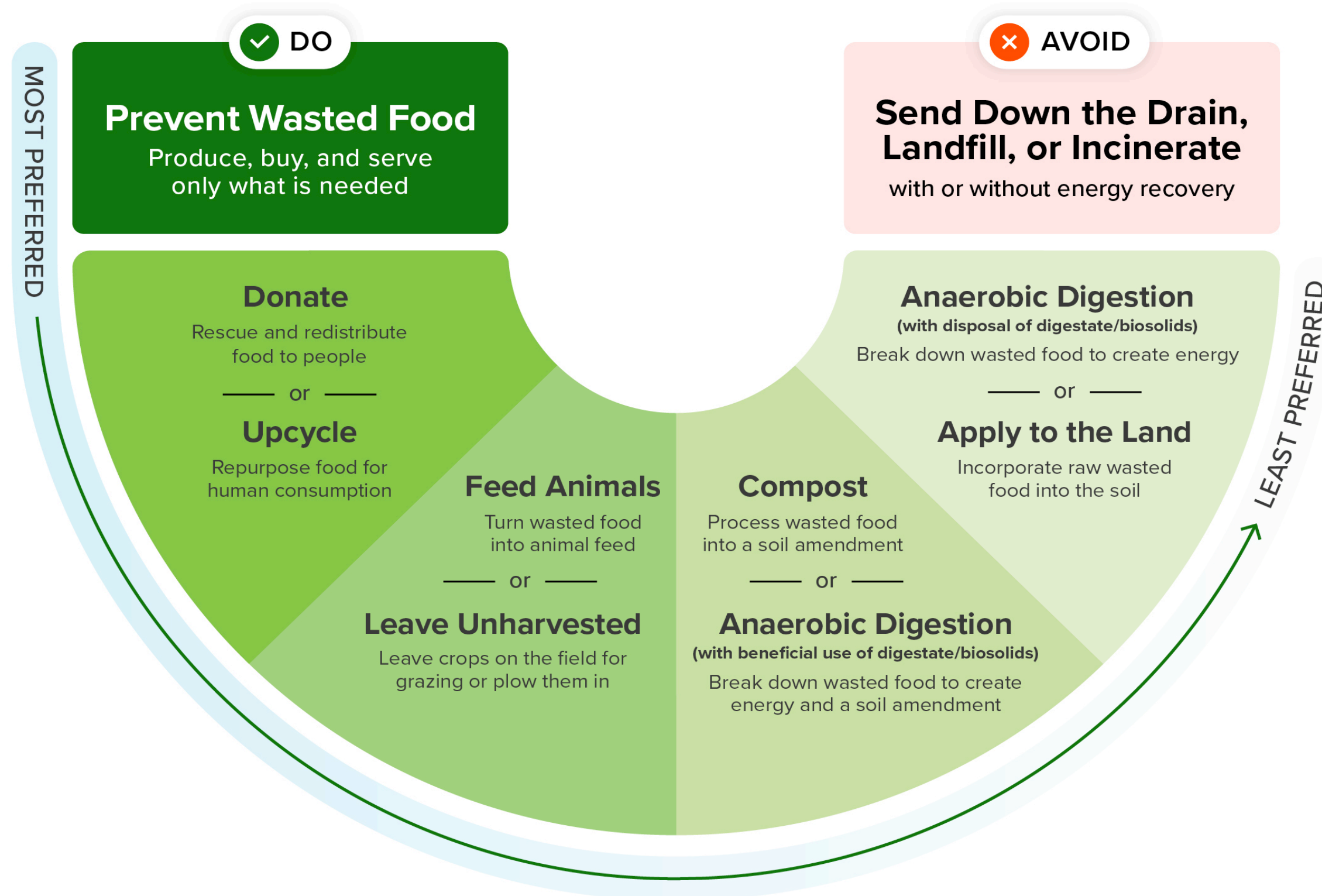
*Solid Waste management within the
Municipality of Anchorage.*





Wasted Food Scale

How to reduce the environmental impacts of wasted food

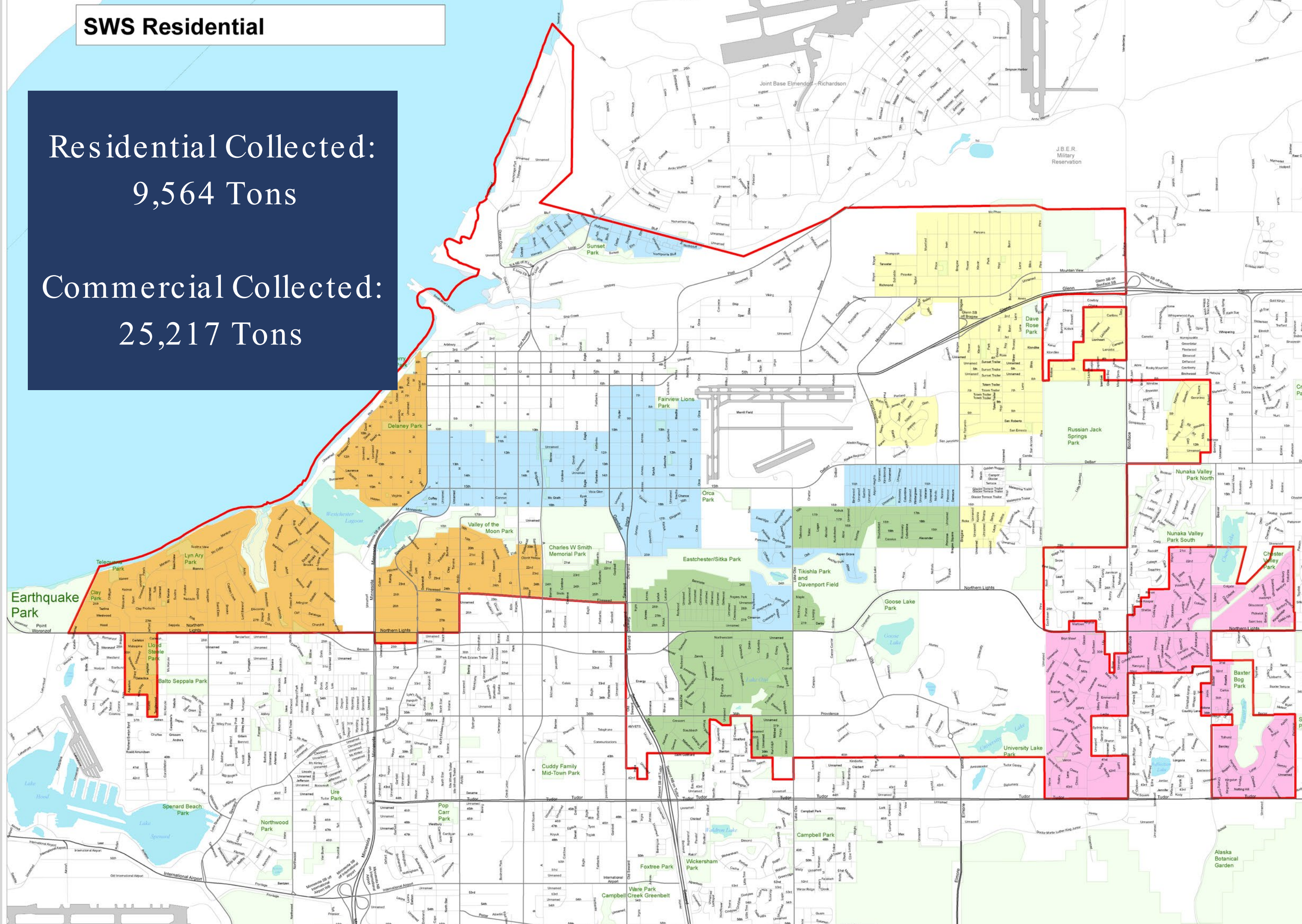


Where We Are

SWS Residential

Residential Collected:
9,564 Tons

Commercial Collected:
25,217 Tons





Anchorage Regional Landfill



Girdwood Transfer Station



Materials Recovery Facility





Vehicle Maintenance



Disposal

Customer Service



Collection









The Anchorage Regional Landfill: 301,537 tons of waste = 603 million lb/yr

25,128 tons per month = 50.3 million lb/month

5,783 tons per week = 11.6 million lb/week

826 tons per day = 1.65 million lb/day



Central Transfer Station

Built in 1980's population was about 150,000

Today population is close to 300,000

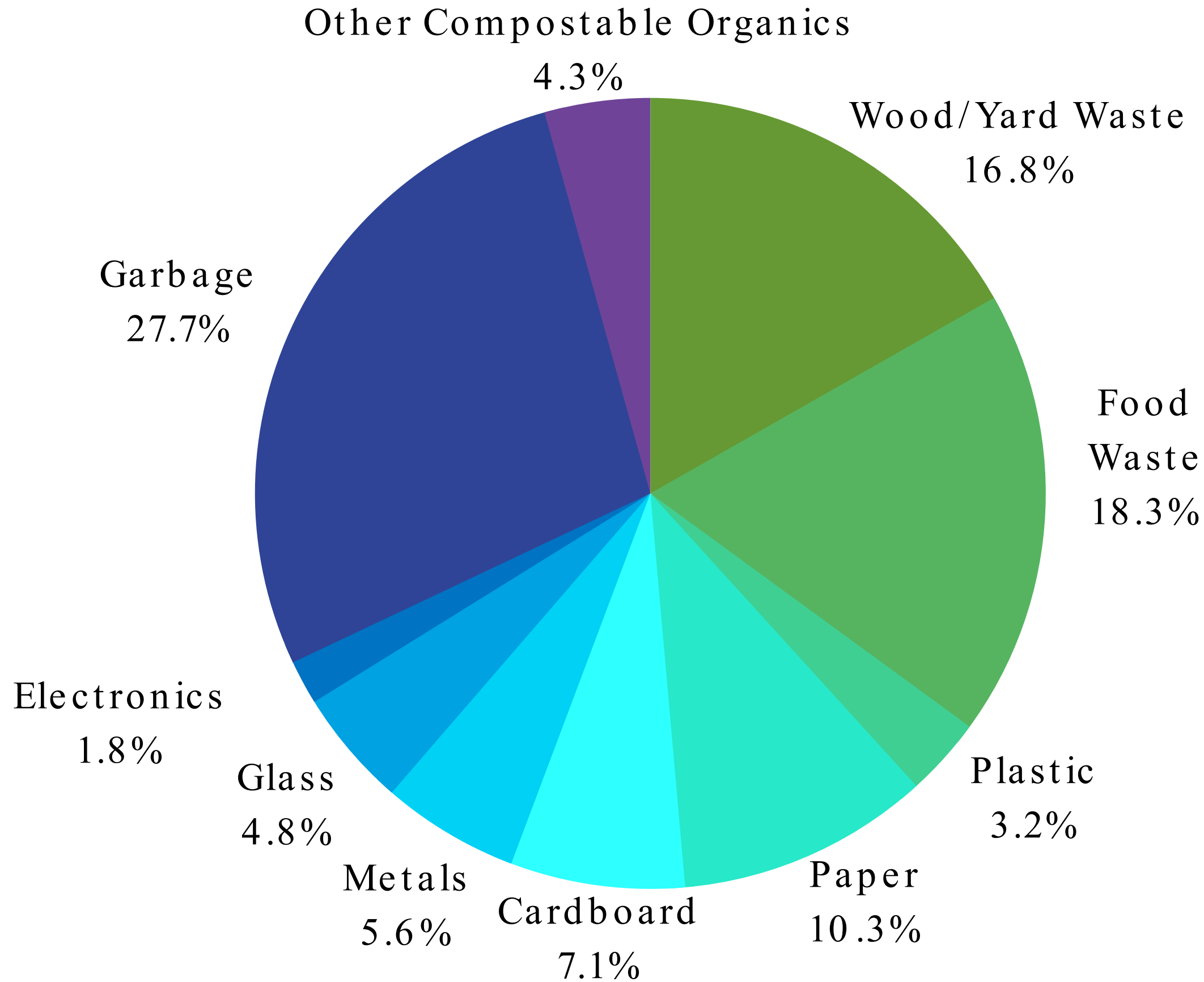
Transfers 80% of Anchorage's trash to the landfill



CENTRAL TRANSFER STATION



2017 Waste Composition Study Anchorage Regional Landfill



Total Organics:	
Compostable Organics	4.3%
Wood/Yard Waste	16.8%
Food Waste	18.3%
Cardboard	7.1%
Paper	10.3%
Total: 56.8%	

1.8% Electronics
3.2% Plastics
4.8% Glass
5.8% Metals
17.4% Cardboard

27.6% Garbage

DIVERTING A WASTE STREAM

Why does it
matter to reduce
our waste stream?

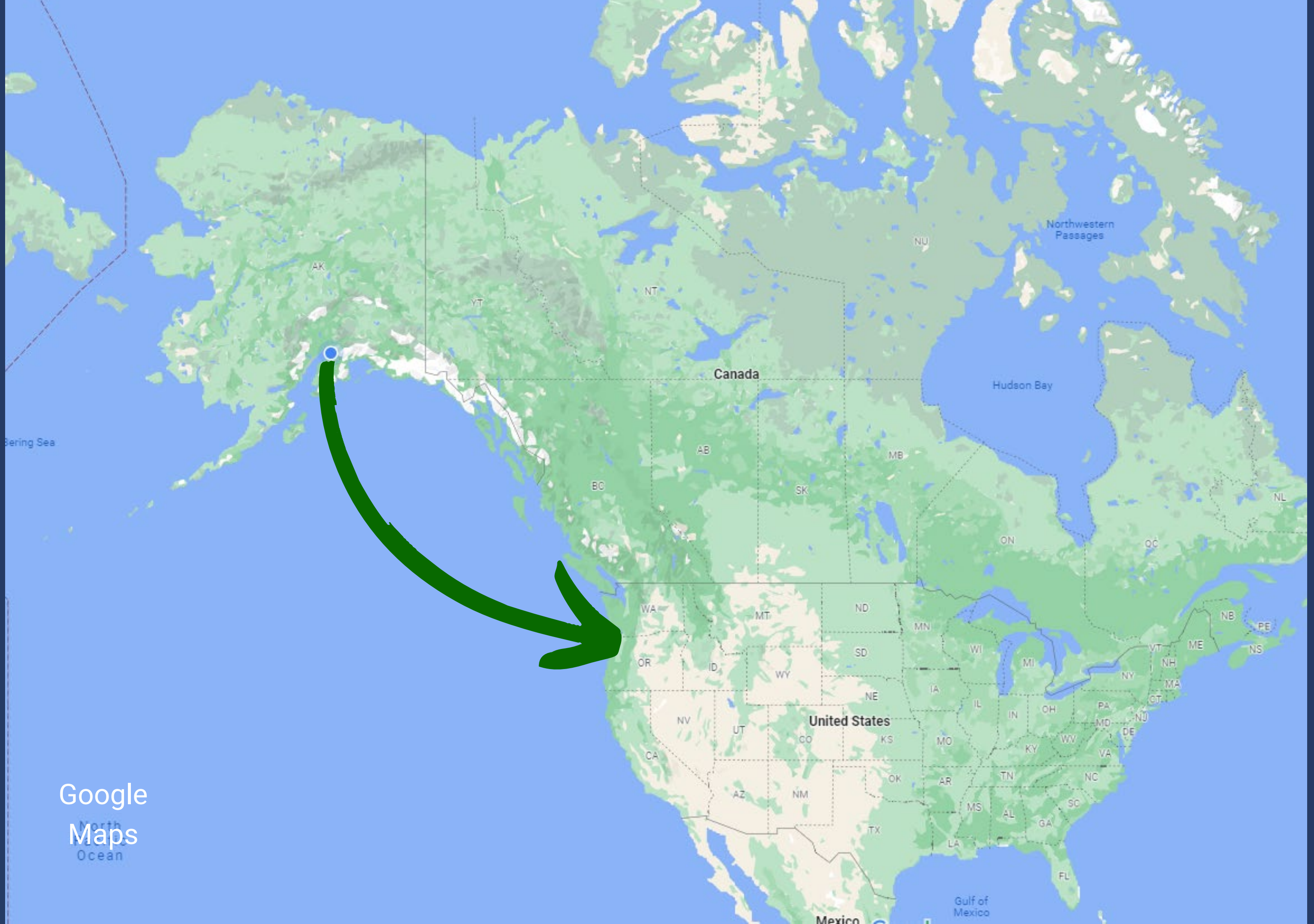
Anchorage Municipality Solid Waste Composition Study, 2017.



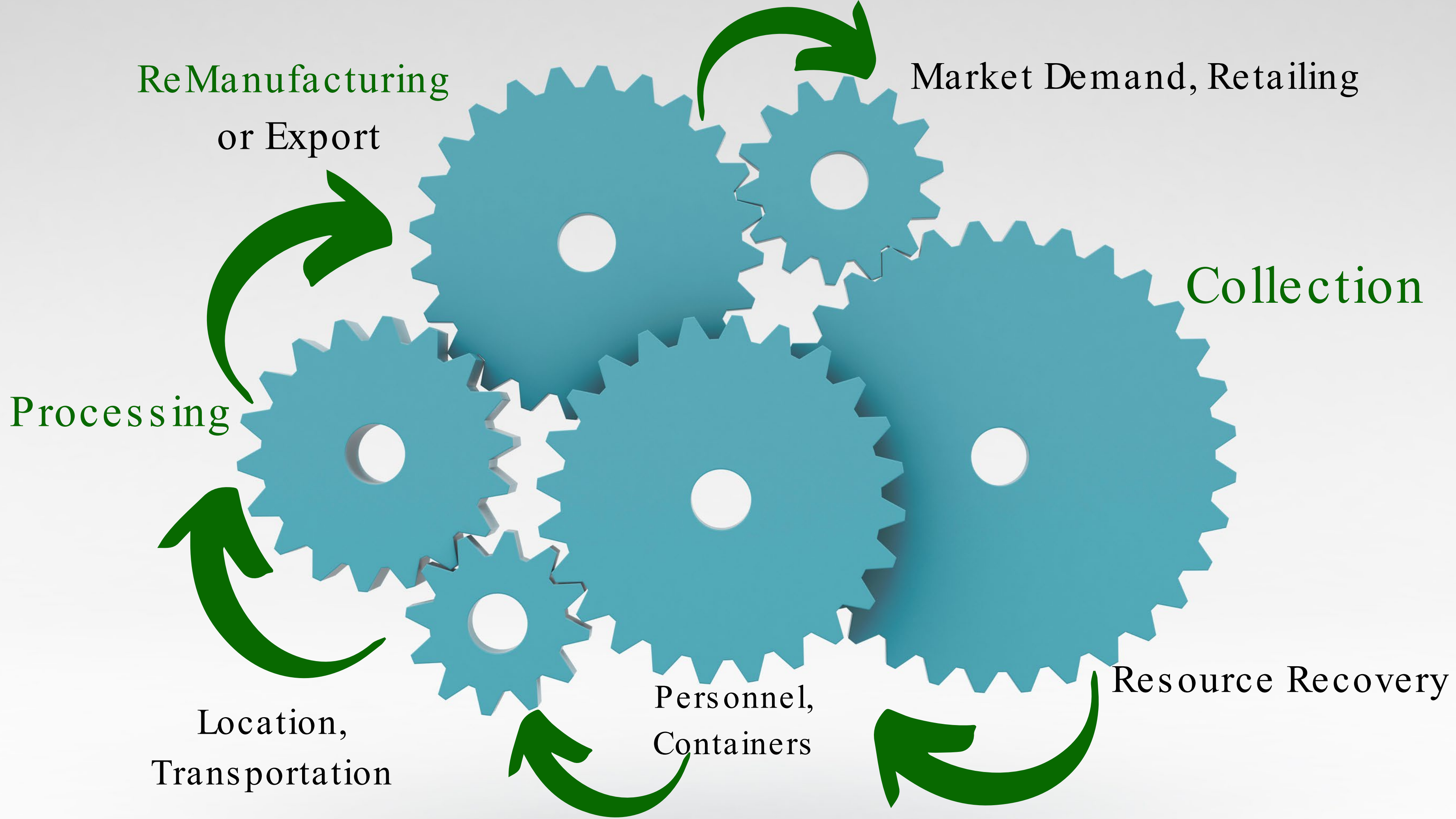
39.2% Green Waste

More than half of our waste stream could be diverted to compost or recycling. Through awareness, we can greatly reduce the amount that we toss in the trash can.

ANCHORAGE LANDFILL

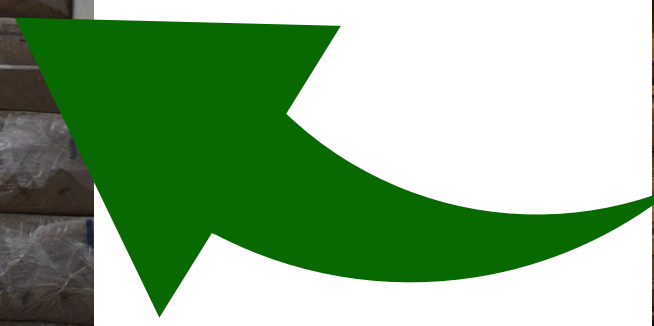


Google
Maps



Circular Economy

*The MOA does not endorse products, for example only.



Curbside

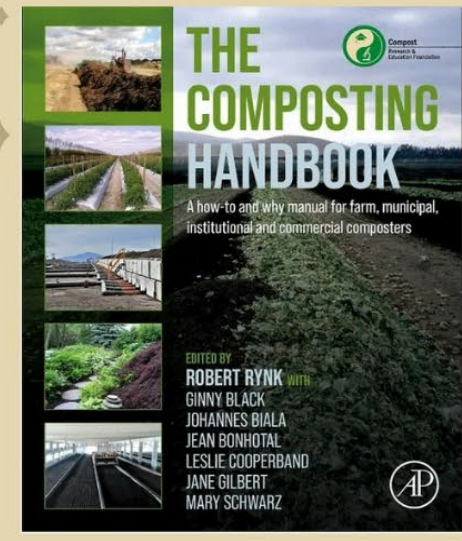


Drop-Off





JOIN US FOR THE FIRST



ALASKA COMPOST CONFERENCE

OCTOBER 17-18, 8AM-4PM

FREE EVENT

JOIN DR. ROBERT RYNK & MATTHEW COTTON
DAY ONE: COMPOST FOUNDATIONS
DAY TWO: IN THE FIELD

COMPOST NIGHT
OCTOBER 17, 2024 5:00PM



RSVP: Compost@muni.org or call 907-343-6274

CHANSHTNU FOOD FOREST

STEP 1
GREENS & BROWNS

Stack green (fresh leaves, grass, flowers, garden trimmings) and carbon-rich (sticks, paper, dead leaves, straw) to the pile and let them decompose.



STEP 2
TRANSITION ZONE

Once pile one starts to break down, transition the pile to bin two. Relocating the compost starts the Stage-2 cycle and gives you more to continue composting in bin one.



STEP 3
TIME TO GROW

When bins are full, it is time to transition everything. Empty the bins. Material from bin two goes to bin three, and material from bin one goes to bin two. Your compost for the third bin is ready to be used to enrich your soil.

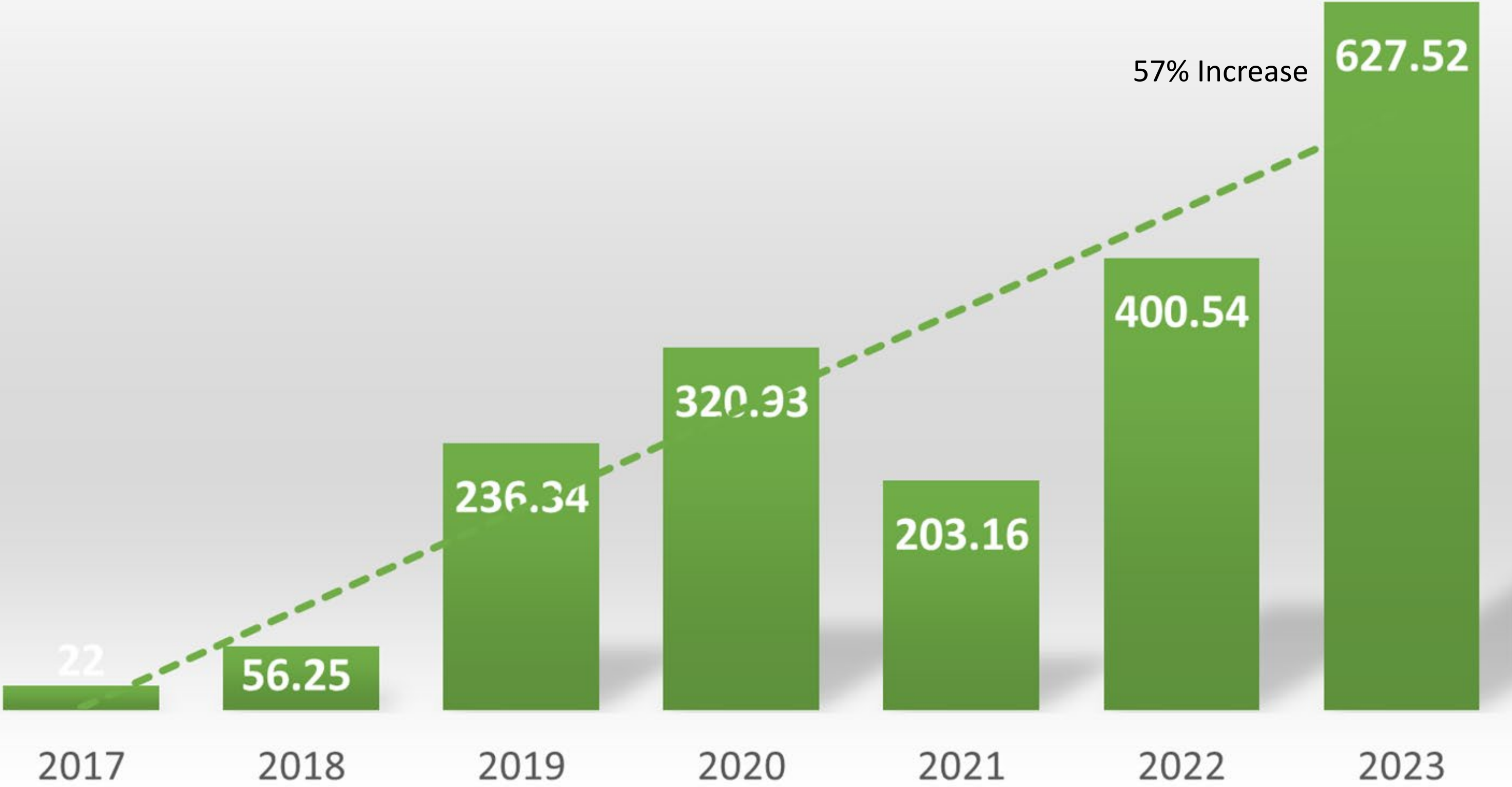




The Power of Worms: Vermiculture



SWS ORGANICS PROGRAM



**Where
We
Are
Going**





Anchorage Compost Coalition



Welcome!



- Backyard
- Community
- Drop-Off
- Commercial Pilot Programming

- WestRock Anchorage Recycling
- Alaska Scrap and Recycling
- Anchorage Downtown Partnership
- Blue Market AK
- Central Recycling Services
- Community Councils
- Habitat Restore
- Master Gardeners of Anchorage
- Total Reclaim
- Yarducopia



ANCHOR GARDENS





Kelli

907-343-6289

Kelli.Toth@Anchorageak.gov

Thank you!!



Email, Website, Social Media Channels