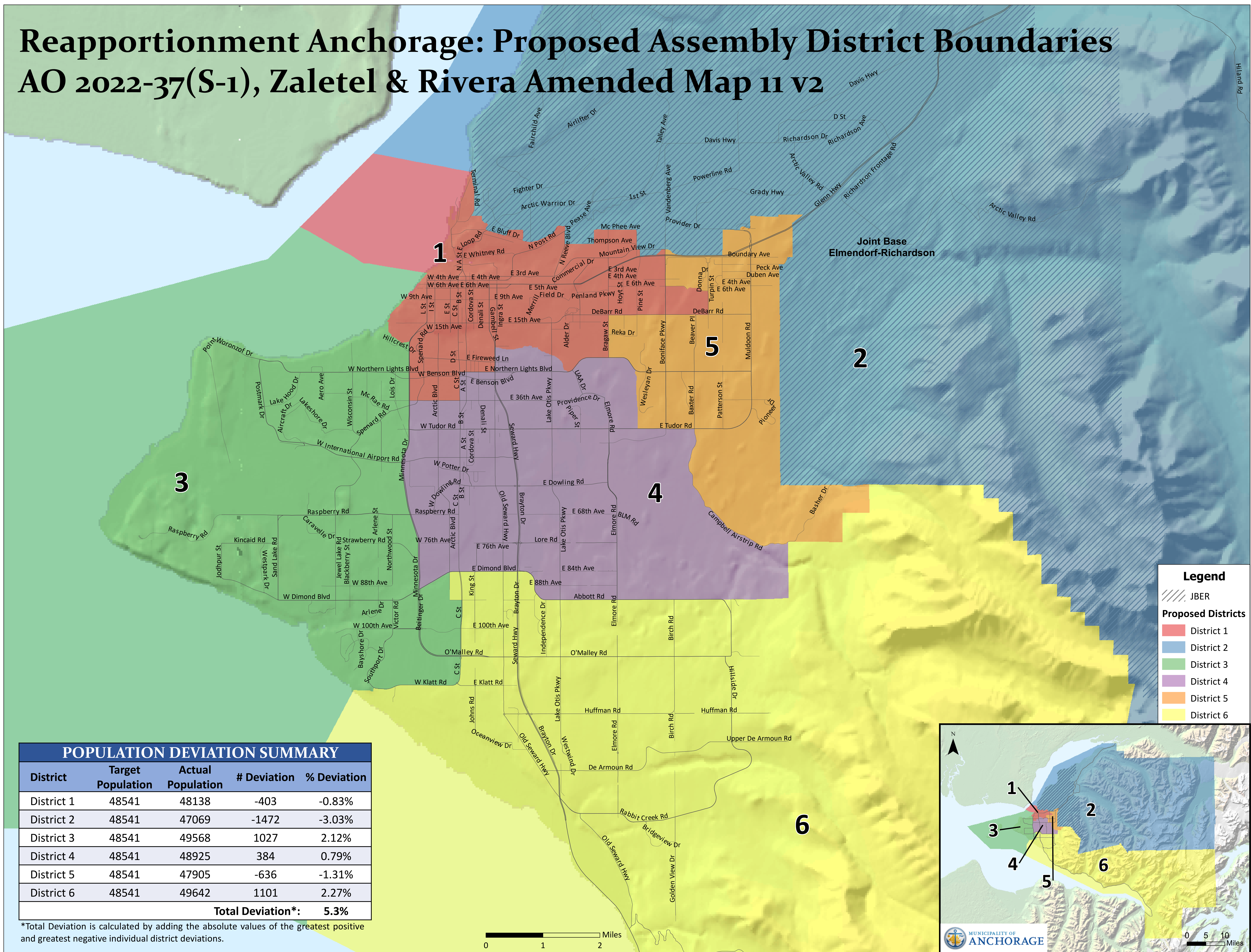


Reapportionment Anchorage: Proposed Assembly District Boundaries

AO 2022-37(S-1), Zaletel & Rivera Amended Map 11 v2



POPULATION DEVIATION SUMMARY				
District	Target Population	Actual Population	# Deviation	% Deviation
District 1	48541	48138	-403	-0.83%
District 2	48541	47069	-1472	-3.03%
District 3	48541	49568	1027	2.12%
District 4	48541	48925	384	0.79%
District 5	48541	47905	-636	-1.31%
District 6	48541	49642	1101	2.27%
Total Deviation*:				5.3%

*Total Deviation is calculated by adding the absolute values of the greatest positive and greatest negative individual district deviations.

0 1 2 Miles

