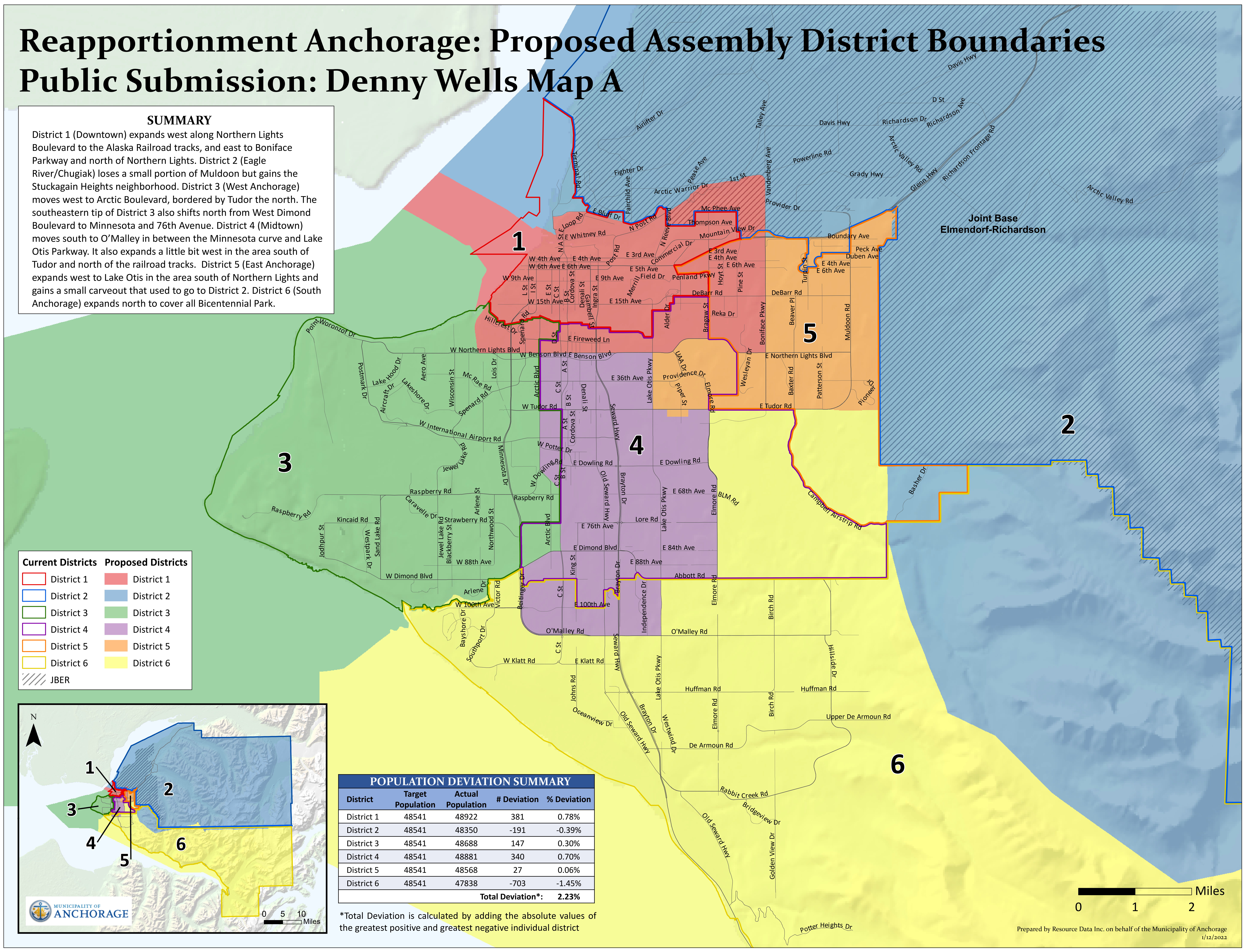


Reapportionment Anchorage: Proposed Assembly District Boundaries

Public Submission: Denny Wells Map A

SUMMARY

District 1 (Downtown) expands west along Northern Lights Boulevard to the Alaska Railroad tracks, and east to Boniface Parkway and north of Northern Lights. District 2 (Eagle River/Chugiak) loses a small portion of Muldoon but gains the Stuckagain Heights neighborhood. District 3 (West Anchorage) moves west to Arctic Boulevard, bordered by Tudor the north. The southeastern tip of District 3 also shifts north from West Dimond Boulevard to Minnesota and 76th Avenue. District 4 (Midtown) moves south to O'Malley in between the Minnesota curve and Lake Otis Parkway. It also expands a little bit west in the area south of Tudor and north of the railroad tracks. District 5 (East Anchorage) expands west to Lake Otis in the area south of Northern Lights and gains a small carveout that used to go to District 2. District 6 (South Anchorage) expands north to cover all Bicentennial Park.



Current Districts	Proposed Districts
District 1	District 1
District 2	District 2
District 3	District 3
District 4	District 4
District 5	District 5
District 6	District 6
JBER	

POPULATION DEVIATION SUMMARY				
District	Target Population	Actual Population	# Deviation	% Deviation
District 1	48541	48922	381	0.78%
District 2	48541	48350	-191	-0.39%
District 3	48541	48688	147	0.30%
District 4	48541	48881	340	0.70%
District 5	48541	48568	27	0.06%
District 6	48541	47838	-703	-1.45%
Total Deviation*:			2.23%	

*Total Deviation is calculated by adding the absolute values of the greatest positive and greatest negative individual district

