



ANCHORAGE COALITION TO
END HOMELESSNESS

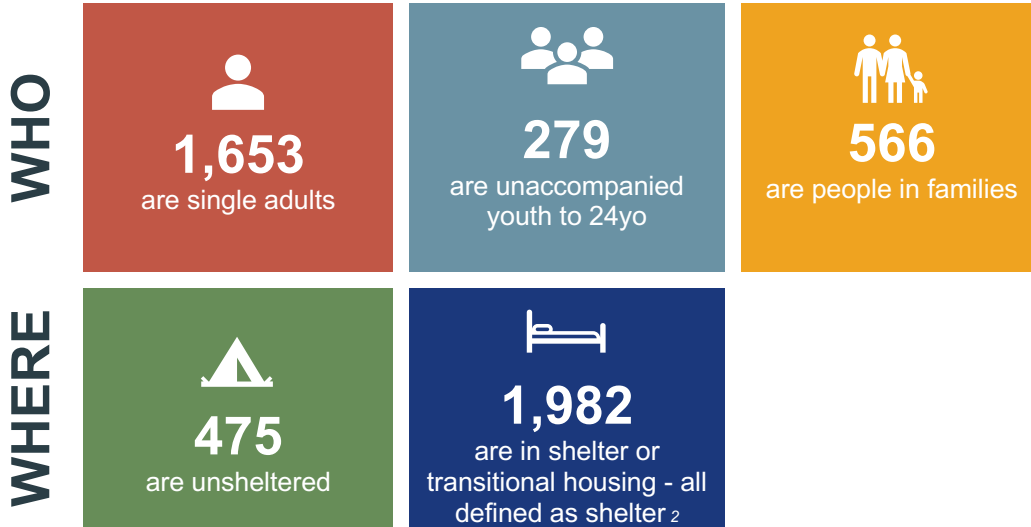
CURRENT SYSTEM OVERVIEW

Prepared November 4, 2024, by the Anchorage Coalition to End Homelessness

2,498*

End-of-month count of people actively experiencing homelessness

Source: AKHMIS



¹ Literal Homelessness: defined as shelter, transitional housing or unsheltered

² Current utilization is 100%

2024 year to date: 8,206 individuals have experienced homelessness

Why have exits from the system to housing slowed?

- Housing program capacity is full.
- Impact is inflow exceeds outflow by the first time in 9 months. 390 inflow/ 301 outflow

What opportunities are there to increase housing capacity?

- CoC Builds competition by HUD is specific to adding Permanent Supportive Housing Capacity.
- Municipality CDBG/HOME-ARP acquisition funding for more units of affordable housing.

Now that emergency cold weather shelter is open what can I expect?

The end of October saw just under 200 people move into additional cold weather shelter capacity.

Anchorage's most vulnerable often experiencing multiple significant disabilities were prioritized.

Primary drivers of exits to housing are:

1. **Self-Resolution** - people who enter the system and resolve quickly. Almost 2/3 of the people who annually experience homelessness resolve (11,000) this way.
2. **Permanent Supportive Housing** - limited in capacity and has a need of 749 additional units.
3. **Next Step and other Rapid Rehousing** - capacity is limited with a current gap of 735 units needed based on available funding for rents and support services.

Upcoming:

- Continue reporting camps for outreach.
- **Emergency Cold Weather Shelter** operations started October 29th. More capacity is expected to come online in November.