

Municipality of Anchorage

- Alaska –

2024

Central Services
Cost Allocation Plan



Dave Bronson
Mayor

Sharon Lechner
Director, Office of Management & Budget

MUNICIPALITY OF ANCHORAGE**2024****CENTRAL SERVICES PLAN****Table of Contents****GENERAL INFORMATION**

Certificate of Cost Allocation Plan.....	1
Introduction to Central Services Plan.....	2
Cognizant Agency Determination.....	3
Organizational Chart at 01/01/2022.....	5

FINANCIAL INFORMATION

Indirect Costs to Grants from Central Service Plan Units.....	6
Unallowable Cost Adjustments by Municipal Account.....	7
Carry Forward Adjustment.....	8
Summary of Billing Units (Including Adjustments).....	9
Detail of Direct Expenditures.....	12
Detail of IGC Expenditures (Direct and Indirect).....	30
Detail of Non-Allowable Expense Adj-Within Unit.....	35
Detail of Billings (IGC) and Program Revenues.....	36

INTRAGOVERNMENTAL CHARGE-OUT METHODOLOGIES

102003 Clerk-Agenda Control.....	39
102006 Clerk-Municipal Audit.....	40
102007 Clerk-Liquor License.....	41
103000 Ombudsman.....	42
106000 Internal Audit.....	43
107000 Equity and Justice.....	44
111100 Mayor.....	45
113200 Office of Equal Opportunity.....	46
113271 IGC-OEO-Equal Employment Opportunity.....	47
113273 IGC-OEO-Contract DBE.....	48
115100 Civil Law.....	49
115200 Criminal.....	50
115300 Administrative Hearing.....	51

115400 Muni Attorney Administration.....	52
121000 Muni Manager Admin.....	53
121010 Deputy Muni Manager.....	54
122300 Leases Administration.....	55
122301 Leases-Parking Garage.....	56
122302 Leases-City Hall.....	57
122303 Leases-ERTC.....	58
122304 Leases-Libraries.....	59
122306 Leases-Traffic.....	60
122307 Leases-Recreation.....	61
122309 Leases-Permit Center.....	62
122310 Leases-Police.....	63
124200 Office of Emergency Management.....	64
124700 Risk Management.....	65
124900 Safety.....	66
132100 Controller Administration.....	67
132200 Central Accounting.....	68
132300 Payroll.....	69
132400 Accounts Payable.....	70
134100 Treasury Administration.....	71
134200 Revenue Management.....	72
134271 IGC-Rev Mgmt-E911.....	73
134272 IGC-Rev Mgmt-PSAR Billing.....	74
134273 IGC-Rev Mgmt-Cash Receipts.....	75
134274 IGC-Rev Mgmt-In-House Collections.....	76
134275 IGC-Rev Mgmt-DCF.....	77
134276 IGC-Exter Collect Agency Recov.....	78
134600 Tax Billing.....	79
134671 IGC-Tax Billing Utilities.....	80
134700 Remittance Processing.....	81
134771 IGC-Remittance Processing.....	82
137000 Chief Fiscal Officer.....	83
138100 Purchasing Services.....	84
139100 Management & Budget.....	85
141100 Admin Support.....	86
142300 Reprographics.....	87
142371 IGC-Repro.....	88

142400 Records Management.....	89
143500 IGC - IT Security.....	90
143571 IT Security - All.....	91
143572 IT Security - No AWWU.....	92
144000 Fixed Assets.....	93
144003 IGC - Microsoft EA SW & HW uprds.....	94
145100 Application Services.....	95
146200 IGC - SAP Support Centr.....	96
147300 Projects & Procurement.....	97
148100 Desktop Services.....	98
148200 Network Services.....	99
148271 IGC - Netwk Svcs - Servers.....	100
148272 IGC - Netwk Svcs - Network.....	101
148273 IGC - Network Svcs - Phones.....	102
148300 Technology Services.....	103
149001 CAMA Depreciation.....	104
181000 Employee Relations Admin.....	105
184100 Labor Relations.....	106
184500 Employment.....	107
187100 Benefits.....	108
510500 OECD Administration.....	109
510600 OECD Data & Analytics.....	110
510671 IGC-OECD GIS Licensing.....	111
510672 IGC-OECD GIS Enterprise Program.....	112
510673 IGC-OECD GIS Dept Support.....	113
710500 Facility Maintenance.....	114
710503 Facilities-Girdwood.....	115
710506 Facilities-Eagle River Town Center.....	116
710509 Facilities-Fire Stations.....	117
710512 Facilities-Libraries.....	118
710515 Facilities-Fac Maint Whse.....	119
710518 Facilities-Traffic.....	120
710521 Facilities-RES/Historical Property.....	121
710524 Facilities-Areawide Parks & Rec.....	122
710527 Facilities-Health and Human Services.....	123
710530 Facilities-ARDSA.....	124
710533 Facilities-Transit/Centers/Park & Rides.....	125

710536 Facilities-Fleet Maint.....	126
710539 Facilities-Police / Substations.....	127
710542 Facilities-Eagle River Parks & Rec.....	128
710545 Facilities-City Hall.....	129
710548 Facilities-Eagle River Parks & Rec Chalet.....	130
710551 Facilities-Eagle River Parks & Rec Pools.....	131
710554 Facilities-Areawide Parks & Rec Pools.....	132
710557 Facilities-Heritage Land Bank.....	133
710560 Facilities-Chugiak Fire Service Area.....	134
710562 Facilities-CBERRRSA.....	135
710563 Facilities-NC HJ Mac Mem Ctr.....	136
710566 Facilities-NC Sullivan Arena.....	137
710569 Facilities-NC Egan Center.....	138
710572 Facilities-NC Dena'ina Center.....	139
710575 Facilities-NC Performing Arts Center.....	140
710581 Facilities- NC Anchorage Museum.....	141
710583 Facilities-Permit Center.....	142
710800 Facility Capital Improvements.....	143

Certificate of Cost Allocation Plan

This is to certify that I have reviewed the cost allocation plan submitted herewith and to the best of my knowledge and belief:

- (1) All costs included in this proposal to establish cost allocations or billing for the period January 1, 2024 through December 31, 2024 are allowable in accordance with the requirements of this Part and the Federal award(s) to which they apply.¹ Unallowable costs have been adjusted for in allocating costs as indicated in the cost allocation plan.
- (2) All costs included in this proposal are properly allocable to Federal awards on the basis of a beneficial or a causal relationship between the expenses incurred and the Federal awards to which they are allocated in accordance with applicable requirements. Further, the same costs that have been treated as indirect costs have not been claimed as direct costs. Similar types of costs have been accounted for consistently.

I declare the foregoing is true and correct.

Municipality of Anchorage
Anchorage, Alaska

Wilks Consulting Services, Inc.
Anchorage, Alaska

(Signature)

(Signature)

Sharon Lechner
Director, Office of Management & Budget
Date of Execution: _____

William J. Wilks
Preparer
Date of Execution: _____

¹ Office of Management and Budget, 2CFR Chapter 1 and Chapter 11, Parts 200, 215, 220, 225, and 230. Uniform Administration Requirements, Cost Principles, and Audit Requirements for Federal Awards.

Introduction to Central Services Cost Allocation Plan

This document presents the Central Services Cost Allocation Plan for the Municipality of Anchorage. The central service costs presented in this document are based on the Municipality's actual costs from January 1, 2022 to December 31, 2022. They will be included in the Indirect Cost Rate Proposals and rates used by grantee departments during the fiscal year beginning January 1, 2024.

Most Municipal central service budget units charge user units for services through the allocation system within the Intragovernmental Chargeback System (IGCs). The IGCs and the allocation system with it are integrated with the Municipality's financial information system and allows automated or manual transfer of expenses between budget units. This document explains the billing methodologies and allocated amounts for those units. Additionally, this document presents a consolidated summary of the actual 2022 costs for the various central services plan agencies.

A few central service units do not bill for their services through IGCs. This document includes allocation methodologies and allocated amounts for those units. Additionally, this document presents a consolidated summary of the actual 2022 (UNAUDITED) costs for those central services plan agencies.

Some costs billed through the IGCs are unallowable under the guidelines presented in the Office of Management & Budget guidance on Administrative Requirements, Cost Principals, and Audit Requirements for Federal Awards released December 26, 2013. The existence of such unallowable costs and the 2024 amounts are presented in this document. This information on unallowable costs will be used in the Indirect Cost Rate Proposals to calculate appropriate downward adjustments to the grantee department indirect cost rates.

Cognizant Agency

Background:

The Municipality of Anchorage (MOA) requested Parrish Blessing and Associates (PBA) provide guidance in determining the MOA's cognizant Federal agency responsible for approving the MOA's Cost Allocation Plan (CAP) and Indirect Cost Rate Proposals (ICRP). Through 2018, the MOA annually developed a CAP and ICRPs in compliance with applicable Federal regulations through a self-certification process. Upon completion of each annual CAP and ICRPs, the MOA uploaded these studies on its website for public review and inspection¹.

These studies, among other things, contained a certification by the MOA's Chief Fiscal Officer that the plans were compliant with applicable Federal regulations involving Federal grant awards including a narrative explaining how the cost studies were prepared, and finally, an indirect cost rate schedule showing the calculations of the ICRP for each MOA department that intends to charge indirect costs to Federal grant awards. The CAPs and ICRPs each contained a letter from the MOA's then cognizant Federal agency, the Department of Health and Human Services, dated August 19, 1986 instructing the MOA that future CAPs and ICRPs no longer have to be submitted for their review, but must continue to be prepared in accordance with Federal regulations and available upon request as of the time a claim is made against a Federal award.

Given the passage of time since the August 1986 letter, the MOA requested a determination of its cognizant agency for approval of its CAPs and ICRPs. The cognizant agency for indirect costs means the Federal agency responsible for reviewing, negotiating, and approving indirect cost proposals or cost allocation plans developed under 2 CFR part 200 on behalf of all Federal agencies. Cognizance is generally assigned to the Federal agency that provides the predominant amount of dollar involvement with a recipient organization. Once designed as the cognizant agency for indirect costs, the Federal agency must remain so for a period of 5 years.

Determination of the MOA's Cognizant Agency:

On December 26, 2013, the Federal Office of Management & Budget (OMB) published its Uniform Guidance that became effective for Federal agencies immediately. Non-Federal entities (i.e. the MOA) were required to comply with the regulations beginning December 2014. Those regulations, among other things, identified the filing requirements of Major Local Government agencies needing to file a CAP to its cognizant agency for indirect costs on an annual basis, and further, identified the cognizant agency². PBA reviewed the reference given in the Federal register and the MOA was identified and the cognizant agency assigned to the MOA was the Department of Health & Human Services (DHHS). Based on these rules and regulations PBA believed that DHHS remained the MOA's cognizant agency through 2018.

¹ The MOA OMB is responsible for the development of the MOA Central Service CAPs and ICRPs. These studies can be viewed on the MOA's website at: <http://www.muni.org/Departments/budget/indirectCost/Pages/default.aspx>

² See Federal Register Vol. 78, No. 248 issued Thursday, December 26, 2013/Rules and Regulations at page 78606 Appendix V that states: "The "major local governments" subject to this requirement, along with each cognizant agency assignment, are listed in the **Federal Register** notice dated January 6, 1986 (available at: http://www.whitehouse.gov/sites/default/files/omb/assets/financial_pdf/fr-notice_cost_negotiation_010686.pdf)."

PBA reviewed the MOA's website and saw that it had made available its CAPs and ICRPs from 2010 through 2018 and had correctly recognized that its cognizant agency was DHHS.

When the MOA was required to complete its 2019 CAP and ICRP, a fresh-look determination of the cognizant agency was required, given that 5 years had lapsed since the December 2014 regulations that assigned the DHHS as the MOA's cognizant agency. PBA believed that in order to determine the appropriate cognizant agency for future CAPs and ICRPs, a review of Federal awards received in 2018 was required.

Working with the MOA OMB staff, PBA determined, based on Table 1 below (Summary of Federal grant awards by MOA agency for 2018), that the MOA's cognizant Federal agency should be the Department of Transportation (DOT) beginning in 2019 and continuing for 5 years or through 2023, pursuant to Federal regulations. As shown in Table 1, DOT provides the predominant amount of dollar involvement with a MOA in 2018

Table 1: Summary of Direct Federal Grant Awards/Amendments by MOA Agency for 2018

2018 Sum of Federal Award Amount	Equal Rights Comm.	Health	Merrill Field	Police	Port	Public Transp.	Total
Department of Health & Human Services	-	26,000	-	-	-	-	26,000
Department of Homeland Security	-	-	-	-	455,150	-	455,150
Department of Housing & Urban Development	-	2,604,334	-	-	-	-	2,604,334
Department of Justice	-	-	-	674,379	-	-	674,379
Department of the Interior	-	-	472,104	-	-	-	472,104
Department of Transportation	-	-	12,337,784	-	-	3,773,716	16,111,500
Equal Employment Opportunity Commission	68,900	-	-	-	-	-	68,900
Grand Total	68,900	2,630,334	12,809,888	674,379	455,150	3,773,716	20,412,367

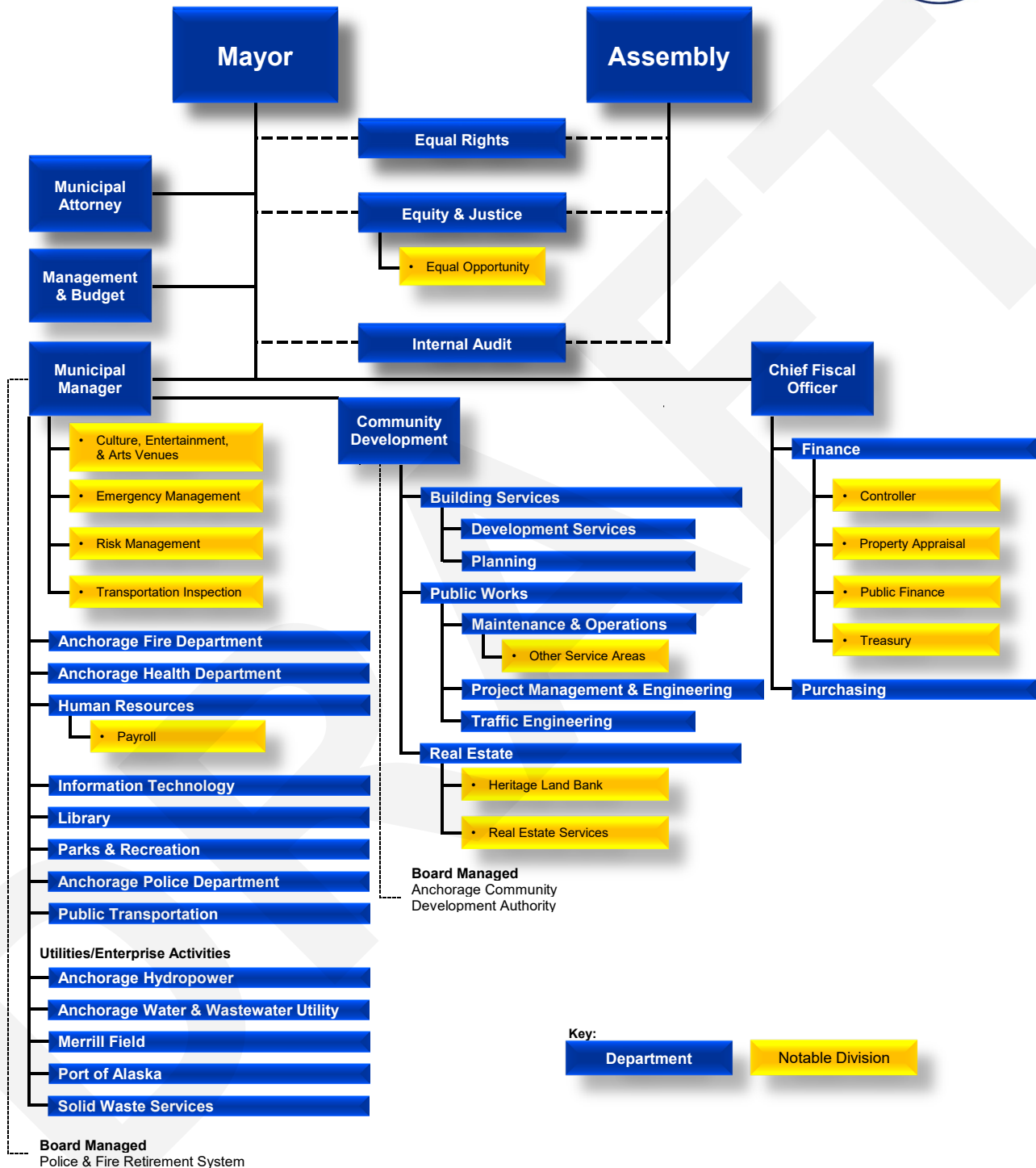
Although the majority of the grants received by MOA are in Merrill Field from Department of Transportation, Federal Aviation Administration (FAA), the FAA follows indirect costs as determined by the Federal Transit Administration (FTA) circular.

With the change in cognizant agencies, the FTA determined that the MOA needed to submit the CAP and ICRPs for approval.

As part of this engagement, the MOA also requested that PBA determine if changing its cognizant agency from DHHS to another agency (DOT) required submitting its CAP and ICRP for approval. To make this determination PBA reviewed the U.S. Department of Transportation, Federal Transit Administration Circular FTA C 5010.1E issued March 21, 2017 and associated revisions released July 21, 2017 and July 16, 2018. The FTA circular provides the following conditions that trigger the need for submitting a recipient's CAP and ICRP for approval as follows:

In Summary, based on FTA circular as reference herein PBA concluded that beginning in 2019 and continuing for 5 years or through 2023, the MOA's cognizant agency is DOT. Further, that the MOA should continue to prepare its CAP and ICRPs pursuant to these regulations.

Municipality of Anchorage



Indirect Costs to Grants from Cost Allocation Plan Units

Indirect costs are costs incurred for a common or joint purpose benefiting more than one cost objective. Indirect costs must be supported by an approved Cost Allocation Plan (CAP) and/or Indirect Cost Rate Proposal (ICRP).

Indirect costs include: (1) the indirect costs originating in each department or agency of the recipient carrying out federal Awards; and (2) the costs of central governmental services distributed through the central service cost allocation plan and not otherwise treated as direct costs.

Unallowable Cost Adjustments by Municipal Account

The following account expenditures are considered Unallowable for purposes of preparing the Municipal Central Services Plan (CSP) and Indirect Cost Rate Proposals. Those accounts which are generally unallowable are filtered out of the total costs used in preparing both the CSP and Indirect Cost Proposals for the Municipality of Anchorage (MOA). Those expenditure accounts are:

Capital

Municipal accounts 570000 – 570999

Although OMB regulations permit flexibility in allowing some capital costs to be allowable, MOA has taken a more conservative approach and excludes all capital costs in its determination of the CSP unallowable percentage computation and indirect cost rates.

Contributions to Other Funds

Municipal accounts 580530, 580540, and 580550 except for reserves and contributions to capital for purpose.

Other

Direct Costs

	Account
Novelties	511290
Legal Services	530090 – 530180
Lobbying Services	530210
Court Costs, Invest, Record Exp	540030
Donations to Non-Profit Org	540100
Contributions to Outside Organizations	540110, 540120
Sponsorship - Operating	540130
Advertising	540150
Election – Misc. Exp	540450
Penalties	540510
Assessment Payments	540590
Debt Service, All	580000 – 580499

Indirect Costs

Office of the Mayor IGCs municipal account 600080

Department of Law IGCs municipal accounts 600160, 600170, 600180, 600190

The expenditures in these accounts are then compiled in the Non-Allowable Expenditures columns in the reports on the following pages and used to compute the disallowance percentage for Municipal Indirect Cost Rate Proposals.

Carry Forward Adjustment

The Municipality of Anchorage computes its central services plan using a “fixed with carry forward” procedure. Under this procedure, historical costs are used for a future fiscal year central services plan. When the actual costs of the year involved become known, the differences between the fixed amounts used in central services cost calculation and the actual costs will be carried forward and used as an adjustment to the fixed amounts established for a later year, only if the result is a net overbill.

For example, the Municipality used actual 2020 historical costs to set the central services plan for 2022. Actual 2022 costs were available at the time the Municipality prepared its 2024 central services plan. Therefore, the Municipality made a carry forward adjustment for the 2024 central services plan by taking the difference between the actual 2022 costs and the fixed costs used to set 2022 central services plan (2020 historical costs) as an adjustment to the 2024 central services plan.



**Municipality of Anchorage
Central Services Plan (CSP)
Summary of Billing Units (Including Adjustments)**

The following units' costs were used in the development of Indirect Cost Rates for the Municipality of Anchorage. These central services costs are collected and pooled in these units and then are allocated out 100% according to methodologies that were developed to best represent cost causer/cost payor correlation. The charges from these units are, for the most part, considered indirect costs because they generally cannot be directly attributed to any specific program, but most programs need and use the services these units provide. Although they are shown as billed costs to the various programs, they are generally not treated nor billed as direct costs to grants. These are identified with a "CS" in the Detail pages of the Central Services Cost Allocation Plan and Indirect Cost Rate

			Using Results as of December 31, 2022					Amount	2020	2022	
Fund	Cost Center	Description	Direct Expenditures	IGC Expenditures (Direct and Indirect)	Total Expenditures - Direct and IGC	Non-Allowable Expenditures (1)	Total Allowable Expenditures	Billing (IGC) and Program Revenues	(Over)/Under Billed if 100% Revenue Supported	Amount (Over)/Under Billed if 100% Revenue Supported	Carry Forward Adjustment (2)
101000	102003	Clerk-Agenda Control	235,158	437	235,595	-	235,595	(235,595)	-	-	-
101000	102006	Clerk-Municipal Audit	528,250	-	528,250	-	528,250	(528,250)	-	-	-
101000	102007	Clerk-Liquor License	77,615	146	77,761	-	77,761	(77,761)	-	-	-
101000	103000	Ombudsman	323,380	42,685	366,065	-	366,065	(366,065)	-	-	-
101000	106000	Internal Audit	733,204	83,451	816,655	-	816,655	(816,655)	-	-	-
101000	107000	Equity & Justice	182,566	374	182,939	-	182,939	(182,939)	-	-	-
101000	111100	Mayor	1,237,740	184,279	1,422,019	-	1,422,019	(1,422,019)	-	-	-
101000	113200	Office of Equal Opportunity	161,890	31,076	192,966	-	192,966	(192,966)	-	-	-
101000	113271	IGC-OEO-Equal Employment Opportun	-	77,186	77,186	-	77,186	(77,186)	-	-	-
101000	113273	IGC-OEO-Contract DBE	-	115,779	115,779	-	115,779	(115,779)	-	-	-
101000	115100	Civil Law	2,166,897	366,014	2,532,910	74,034	2,458,876	(2,532,910)	-	-	-
101000	115200	Criminal	3,163,570	472,487	3,636,058	121,221	3,514,837	(3,636,058)	-	-	-
101000	115300	Administrative Hearing	303,802	28,133	331,936	4,679	327,257	(331,936)	-	-	-
101000	115400	Muni Attorney Administration	251,375	37,240	288,615	-	288,615	(288,615)	-	-	-
101000	121000	Muni Manager Admin	677,543	71,527	749,070	-	749,070	(749,070)	-	-	-
101000	121010	Muni Manager Deputy Director	195,192	1,962	197,153	-	197,153	(197,153)	-	-	-
101000	122300	Leases Administration	-	-	-	-	-	-	-	-	-
101000	122301	Leases-Parking Garage	91,980	-	91,980	-	91,980	(91,980)	-	-	-
101000	122302	Leases-City Hall	4,016,856	-	4,016,856	198,955	3,817,901	(4,016,856)	-	-	-
101000	122303	Leases-ERTC	365,283	-	365,283	120,000	245,283	(365,283)	-	-	-
101000	122304	Leases-Libraries	228,607	-	228,607	-	228,607	(228,607)	-	-	-
101000	122306	Leases-Traffic	48,000	-	48,000	-	48,000	(48,000)	-	-	-
101000	122307	Leases-Recreation	378,158	-	378,158	-	378,158	(378,158)	-	-	-
101000	122309	Leases-Permit Center	2,096,780	-	2,096,780	-	2,096,780	(2,096,780)	-	-	-
101000	122310	Leases-Police	37,997	-	37,997	-	37,997	(37,997)	-	-	-
101000	124200	Office of Emergency Management	940,296	107,417	1,047,713	541,323	506,390	(1,047,713)	-	-	-
101000	124700	Risk Management	294,362	805,051	1,099,412	662,910	436,502	(1,099,412)	-	-	-
101000	124900	Safety	174,732	17,448	192,180	585	191,595	(192,180)	-	-	-
101000	132100	Controller Administration	235,741	23,485	259,226	-	259,226	(259,226)	-	-	-
101000	132200	Central Accounting	1,877,581	412,044	2,289,626	-	2,289,626	(2,289,626)	-	-	-
101000	132300	Payroll	1,229,065	89,460	1,318,525	-	1,318,525	(1,318,525)	-	-	-
101000	132400	Accounts Payable	258,448	127,091	385,540	-	385,540	(385,540)	-	-	-
101000	134100	Treasury Administration	395,637	47,888	443,525	-	443,525	(443,525)	-	-	-
101000	134200	Revenue Management	1,810,655	374,299	2,184,954	22	2,184,932	(2,184,954)	-	-	-
101000	134271	IGC-Rev Mgmt-E911	-	13,769	13,769	-	13,769	(13,769)	-	-	-
101000	134272	IGC-Rev Mgmt-PSAR Billing	-	176,507	176,507	-	176,507	(176,507)	-	-	-
101000	134273	IGC-Rev Mgmt-Cash Receipts	-	232,578	232,578	-	232,578	(232,578)	-	-	-
101000	134274	IGC-Rev Mgmt-In-House Collections	-	29,197	29,197	-	29,197	(29,197)	-	-	-
101000	134275	IGC-Rev Mgmt-DCF	-	429,656	429,656	-	429,656	(429,656)	-	-	-
101000	134276	IGC-Exter Collect Agncy Recov	-	35,998	35,998	-	35,998	(35,998)	-	-	-
101000	134600	Tax Billing	608,258	125,395	733,654	-	733,654	(736,294)	(2,640)	-	(2,640)
101000	134671	IGC-Tax Billing Utilities	-	74,158	74,158	-	74,158	(74,158)	-	-	-

2024 Cost Allocation Plan

Using Results as of December 31, 2022

Central Services

Fund	Cost Center	Description	Using Results as of December 31, 2022					Amount (Over)/Under Billed if 100% Revenue Supported	2020	2022
			Direct Expenditures	IGC Expenditures (Direct and Indirect)	Total Expenditures - Direct and IGC	Non-Allowable Expenditures (1)	Total Allowable Expenditures		Billing (IGC) and Program Revenues	Amount (Over)/Under Billed if 100% Revenue Supported
101000	134700	Remittance Processing	230,556	78,008	308,564	-	308,564	(308,564)	-	-
101000	134771	IGC-Remittance Processing	-	212,971	212,971	-	212,971	(212,971)	-	-
101000	137000	Chief Fiscal Officer	321,568	2,002	323,570	-	323,570	(323,570)	-	-
101000	138100	Purchasing Services	1,639,043	192,878	1,831,922	-	1,831,922	(1,831,922)	-	-
101000	139100	Management & Budget	885,181	111,071	996,251	-	996,251	(996,251)	-	-
607000	141100	Admin Support	1,157,901	595,105	1,753,006	-	1,753,006	(1,753,006)	-	-
101000	142300	Reprographics	932,651	255,000	1,187,652	19,670	1,167,982	(1,167,982)	19,670	-
101000	142371	IGC-Repro	-	759,147	759,147	-	759,147	(759,147)	-	-
101000	142400	Records Management	235,281	45,866	281,146	-	281,146	(281,146)	-	1,519
607000	143500	IGC - IT Security	928,402	69,350	997,752	-	997,752	(997,752)	-	-
607000	143571	IGC - IT Security - All	-	269,393	269,393	-	269,393	(269,393)	-	-
607000	143572	IGC - IT Security - No AWWU	-	728,359	728,359	-	728,359	(728,359)	-	-
607000	144000	Fixed Assets	143,404	-	143,404	138,611	4,793	(143,404)	-	-
607000	144003	IGC - Microsoft EA SW & HW upgrds	1,483,303	-	1,483,303	-	1,483,303	(1,483,303)	-	-
607000	145100	Application Services	1,909,923	301,346	2,211,269	1,005	2,210,264	(2,211,269)	-	-
607000	146200	IGC - SAP Support Centr	5,375,240	625,746	6,000,986	412,121	5,588,866	(5,941,653)	59,333	-
607000	146279	IGC - SAP Capital Recovery	-	-	-	-	-	(3,973,188)	-	-
607000	147300	Projects & Procurement	1,369,862	207,894	1,577,756	-	1,577,756	(1,577,756)	-	-
607000	148100	Desktop Services	2,030,088	253,160	2,283,247	6,095	2,277,153	(2,277,153)	6,095	-
607000	148200	Network Services	5,234,829	368,150	5,602,979	17,622	5,585,357	(5,586,342)	16,637	-
607000	148271	IGC - Netwk Svcs - Servers	-	2,995,955	2,995,955	-	2,995,955	(2,995,955)	-	-
607000	148272	IGC - Netwk Svcs - Network	-	2,075,326	2,075,326	-	2,075,326	(2,075,326)	-	-
607000	148273	IGC - Netwk Svcs - Phones	-	515,061	515,061	-	515,061	(515,061)	-	-
607000	148300	Technology Services	1,049,806	-	1,049,806	-	1,049,806	(1,049,806)	-	-
607000	149001	CAMA Depreciation	-	-	-	-	-	-	-	-
101000	181000	Employee Relations Admin	546,807	66,283	613,090	-	613,090	(613,090)	-	-
101000	184100	Labor Relations	1,040,408	198,868	1,239,275	-	1,239,275	(1,239,275)	-	-
101000	184500	Employment	1,723,493	518,799	2,242,292	-	2,242,292	(2,242,292)	-	-
101000	187100	Benefits	483,795	169,302	653,097	-	653,097	(653,097)	-	-
101000	510500	OECD Admin	188,673	106,875	295,548	64,277	231,271	(295,548)	-	-
101000	510600	OECD Data & Analytics	969,825	24,644	994,469	9,490	984,979	(984,979)	9,490	-
101000	510671	IGC-OECD GIS Licensing	-	325,000	325,000	-	325,000	(325,000)	-	-
101000	510672	IGC-OECD GIS Enterprise Program	-	515,979	515,979	-	515,979	(515,979)	-	-
101000	510673	IGC-OECD GIS Dept Support	-	144,000	144,000	-	144,000	(144,000)	-	-
101000	710500	Facility Maintenance	4,930,050	844,504	5,774,553	675,963	5,098,590	(5,774,553)	-	-
101000	710503	Facilities-Girdwood	47,546	15,060	62,606	-	62,606	(62,606)	-	-
101000	710506	Facilities-Eagle River Town Center	112,728	75,137	187,865	-	187,865	(187,865)	-	-
101000	710509	Facilities-Fire Stations	1,518,976	1,078,730	2,597,706	-	2,597,706	(2,597,706)	-	-
101000	710512	Facilities-Libraries	1,749,323	1,413,012	3,162,336	-	3,162,336	(3,162,336)	-	-
101000	710515	Facilities-Fac Maint Whse	199,073	132,417	331,491	-	331,491	(331,491)	-	-
101000	710518	Facilities-Traffic	52,491	3,130	55,621	-	55,621	(55,621)	-	-
101000	710521	Facilities-RES/Historical Property	30,092	25,776	55,869	-	55,869	(55,869)	-	-
101000	710524	Facilities-Areawide Parks & Rec	499,146	314,232	813,378	-	813,378	(813,378)	-	-
101000	710527	Facilities-Health and Human Services	788,280	589,009	1,377,289	-	1,377,289	(1,377,289)	-	-
101000	710530	Facilities-ARDSA	11,342	20,502	31,844	-	31,844	(31,844)	-	-
101000	710533	Facilities-Transit/Centers/Park & Rides	1,136,805	844,779	1,981,584	-	1,981,584	(1,981,584)	-	-
101000	710536	Facilities-Fleet Maint	217,670	179,849	397,519	-	397,519	(397,519)	-	-
101000	710539	Facilities-Police / Substations	1,000,047	791,821	1,791,868	-	1,791,868	(1,791,868)	-	-
101000	710542	Facilities-Eagle River Parks & Rec	1,372	3,003	4,375	-	4,375	(4,375)	-	-
101000	710545	Facilities-City Hall	174,388	150,191	324,579	-	324,579	(324,579)	-	-
101000	710548	Facilities-Eagle River Parks & Rec Cha	760	98	857	-	857	(857)	-	-
101000	710551	Facilities-Eagle River Parks & Rec Pod	11,158	4,343	15,501	-	15,501	(15,501)	-	-
101000	710554	Facilities-Areawide Parks & Rec Pools	47,946	62,109	110,055	-	110,055	(110,055)	-	-

2024 Cost Allocation Plan

Using Results as of December 31, 2022

Central Services

Fund	Cost Center	Description	Using Results as of December 31, 2022					Amount (Over)/Under Billed if 100% Revenue Supported	Central Services		
			Direct Expenditures	IGC Expenditures (Direct and Indirect)	Total Expenditures - Direct and IGC	Non-Allowable Expenditures (1)	Total Allowable Expenditures		Billing (IGC) and Program Revenues	2020 Amount (Over)/Under Billed if 100% Revenue Supported	2022 Carry Forward Adjustment (2)
101000	710557	Facilities-Heritage Land Bank	14,548	12,371	26,918	-	26,918	(26,918)	-	-	
101000	710560	Facilities-Chugiak Fire Service Area	30,962	14,381	45,342	-	45,342	(45,342)	-	-	
101000	710562	Facilities-CBERRRSA	73	19	92	-	92	(92)	-	-	
101000	710563	Facilities-NC HJ Mac Mem Ctr	5,741	-	5,741	-	5,741	(5,741)	-	-	
101000	710566	Facilities-NC Sullivan Arena	3,908	-	3,908	-	3,908	(3,908)	-	-	
101000	710569	Facilities-NC Egan Center	7,051	-	7,051	-	7,051	(7,051)	-	-	
101000	710572	Facilities-NC Dena'ina Center	-	-	-	-	-	-	-	-	
101000	710575	Facilities-NC Performing Arts Center	36,357	-	36,357	-	36,357	(36,357)	-	-	
101000	710581	Facilities-NC Anchorage Museum	11,005	-	11,005	-	11,005	(11,005)	-	-	
101000	710583	Facilities-Permit Center	-	1	1	-	1	(1)	-	-	
101000	710800	Facility Capital Improvements	898,969	7,158	906,127	621,751	284,376	(906,127)	-	-	
Total Indirect Central Services 100%			68,744,462	23,947,387	92,691,849	3,690,332	89,001,517	(96,556,453)	108,584	1,519	(1,121)

Central Service Adjustment for Non-allowable Expenditures and Overbillings

Total Amount Over Billed	-
Total Amount Non-Allowable (1)	3,690,332
Total CarryForward Adjustment if Over Billed (2)	-
Total Adjustment	3,690,332
Total Billings	96,556,453
Adjustment Percentage for Non-Allowable Costs and Overbillings	3.82%

CSP Cat.	Department	Cost Center Description	Fiscal		Cost		Actuals
			Year	Fund	Center	Acct	
CS	Assembly	Clerk-Agenda Control	2022	101000	102003	501010	117,028.77
CS	Assembly	Clerk-Agenda Control	2022	101000	102003	501020	1,119.30
CS	Assembly	Clerk-Agenda Control	2022	101000	102003	501040	18,364.60
CS	Assembly	Clerk-Agenda Control	2022	101000	102003	501080	30,012.72
CS	Assembly	Clerk-Agenda Control	2022	101000	102003	501090	91.67
CS	Assembly	Clerk-Agenda Control	2022	101000	102003	501100	57,806.87
CS	Assembly	Clerk-Agenda Control	2022	101000	102003	501105	10,220.50
CS	Assembly	Clerk-Agenda Control	2022	101000	102003	501115	53.39
CS	Assembly	Clerk-Agenda Control	2022	101000	102003	501130	272.53
CS	Assembly	Clerk-Agenda Control	2022	101000	102003	501140	187.75
CS	Assembly	Clerk-Municipal Audit	2022	101000	102006	530380	528,250.00
CS	Assembly	Clerk-Liquor License	2022	101000	102007	501010	38,957.98
CS	Assembly	Clerk-Liquor License	2022	101000	102007	501020	792.75
CS	Assembly	Clerk-Liquor License	2022	101000	102007	501040	5,561.79
CS	Assembly	Clerk-Liquor License	2022	101000	102007	501080	10,001.05
CS	Assembly	Clerk-Liquor License	2022	101000	102007	501090	29.85
CS	Assembly	Clerk-Liquor License	2022	101000	102007	501100	18,733.84
CS	Assembly	Clerk-Liquor License	2022	101000	102007	501105	3,368.01
CS	Assembly	Clerk-Liquor License	2022	101000	102007	501115	17.38
CS	Assembly	Clerk-Liquor License	2022	101000	102007	501130	90.78
CS	Assembly	Clerk-Liquor License	2022	101000	102007	501140	61.50
CS	Assembly	Ombudsman	2022	101000	103000	501010	192,993.76
CS	Assembly	Ombudsman	2022	101000	103000	501040	15,537.45
CS	Assembly	Ombudsman	2022	101000	103000	501080	44,335.22
CS	Assembly	Ombudsman	2022	101000	103000	501090	100.30
CS	Assembly	Ombudsman	2022	101000	103000	501100	40,422.00
CS	Assembly	Ombudsman	2022	101000	103000	501105	15,826.73
CS	Assembly	Ombudsman	2022	101000	103000	501115	57.42
CS	Assembly	Ombudsman	2022	101000	103000	501130	414.19
CS	Assembly	Ombudsman	2022	101000	103000	501140	264.68
CS	Assembly	Ombudsman	2022	101000	103000	511000	434.35
CS	Assembly	Ombudsman	2022	101000	103000	511010	682.86
CS	Assembly	Ombudsman	2022	101000	103000	511050	546.32
CS	Assembly	Ombudsman	2022	101000	103000	530060	48.25
CS	Assembly	Ombudsman	2022	101000	103000	540040	450.00
CS	Assembly	Ombudsman	2022	101000	103000	540200	3,605.00
CS	Assembly	Ombudsman	2022	101000	103000	540242	519.77
CS	Assembly	Ombudsman	2022	101000	103000	540640	462.00
CS	Assembly	Ombudsman	2022	101000	103000	540650	3,577.81
CS	Assembly	Ombudsman	2022	101000	103000	590210	3,101.61
CS	Internal Audit	Internal Audit	2022	101000	106000	501010	420,967.91
CS	Internal Audit	Internal Audit	2022	101000	106000	501040	45,370.60
CS	Internal Audit	Internal Audit	2022	101000	106000	501080	98,411.90
CS	Internal Audit	Internal Audit	2022	101000	106000	501090	205.70
CS	Internal Audit	Internal Audit	2022	101000	106000	501100	123,807.50
CS	Internal Audit	Internal Audit	2022	101000	106000	501105	34,963.66
CS	Internal Audit	Internal Audit	2022	101000	106000	501115	118.80
CS	Internal Audit	Internal Audit	2022	101000	106000	501130	923.64
CS	Internal Audit	Internal Audit	2022	101000	106000	501140	601.38
CS	Internal Audit	Internal Audit	2022	101000	106000	511000	980.74
CS	Internal Audit	Internal Audit	2022	101000	106000	511010	149.95
CS	Internal Audit	Internal Audit	2022	101000	106000	511330	161.70
CS	Internal Audit	Internal Audit	2022	101000	106000	530060	26.00
CS	Internal Audit	Internal Audit	2022	101000	106000	540040	825.00
CS	Internal Audit	Internal Audit	2022	101000	106000	540050	1,485.00
CS	Internal Audit	Internal Audit	2022	101000	106000	540220	236.63
CS	Internal Audit	Internal Audit	2022	101000	106000	540242	770.50
CS	Internal Audit	Internal Audit	2022	101000	106000	540300	2,808.00
CS	Internal Audit	Internal Audit	2022	101000	106000	590210	389.79

CSP Cat.	Department	Cost Center Description	Fiscal		Cost		Actuals
			Year	Fund	Center	Acct	
CS	Equity & Justice	Equity & Justice	2022	101000	107000	501010	115,027.68
CS	Equity & Justice	Equity & Justice	2022	101000	107000	501040	5,593.92
CS	Equity & Justice	Equity & Justice	2022	101000	107000	501080	26,531.57
CS	Equity & Justice	Equity & Justice	2022	101000	107000	501090	40.80
CS	Equity & Justice	Equity & Justice	2022	101000	107000	501100	25,692.00
CS	Equity & Justice	Equity & Justice	2022	101000	107000	501105	9,252.02
CS	Equity & Justice	Equity & Justice	2022	101000	107000	501115	23.76
CS	Equity & Justice	Equity & Justice	2022	101000	107000	501130	241.19
CS	Equity & Justice	Equity & Justice	2022	101000	107000	501140	162.78
CS	Mayor	Mayor	2022	101000	111100	501010	694,326.79
CS	Mayor	Mayor	2022	101000	111100	501040	45,994.32
CS	Mayor	Mayor	2022	101000	111100	501080	160,508.40
CS	Mayor	Mayor	2022	101000	111100	501090	299.12
CS	Mayor	Mayor	2022	101000	111100	501100	162,664.33
CS	Mayor	Mayor	2022	101000	111100	501105	56,804.20
CS	Mayor	Mayor	2022	101000	111100	501115	179.09
CS	Mayor	Mayor	2022	101000	111100	501130	1,197.11
CS	Mayor	Mayor	2022	101000	111100	501140	971.37
CS	Mayor	Mayor	2022	101000	111100	511000	13,402.59
CS	Mayor	Mayor	2022	101000	111100	511010	3,528.80
CS	Mayor	Mayor	2022	101000	111100	511030	665.22
CS	Mayor	Mayor	2022	101000	111100	511050	1,449.55
CS	Mayor	Mayor	2022	101000	111100	511080	61.80
CS	Mayor	Mayor	2022	101000	111100	511090	6,505.17
CS	Mayor	Mayor	2022	101000	111100	511140	64.78
CS	Mayor	Mayor	2022	101000	111100	511170	22.14
CS	Mayor	Mayor	2022	101000	111100	511330	2,427.81
CS	Mayor	Mayor	2022	101000	111100	511360	686.00
CS	Mayor	Mayor	2022	101000	111100	520040	9,383.71
CS	Mayor	Mayor	2022	101000	111100	520050	2,111.59
CS	Mayor	Mayor	2022	101000	111100	520060	9,872.07
CS	Mayor	Mayor	2022	101000	111100	520070	1,566.60
CS	Mayor	Mayor	2022	101000	111100	520080	3,537.30
CS	Mayor	Mayor	2022	101000	111100	520090	256.00
CS	Mayor	Mayor	2022	101000	111100	530060	122.03
CS	Mayor	Mayor	2022	101000	111100	530380	45,148.78
CS	Mayor	Mayor	2022	101000	111100	540050	681.22
CS	Mayor	Mayor	2022	101000	111100	540070	64.00
CS	Mayor	Mayor	2022	101000	111100	540170	3,176.38
CS	Mayor	Mayor	2022	101000	111100	540200	482.58
CS	Mayor	Mayor	2022	101000	111100	540242	1,375.90
CS	Mayor	Mayor	2022	101000	111100	540271	857.42
CS	Mayor	Mayor	2022	101000	111100	540300	1,590.00
CS	Mayor	Mayor	2022	101000	111100	540650	2,061.00
CS	Mayor	Mayor	2022	101000	111100	590210	3,694.95
CS	Equity & Justice	Office of Equal Opportunity	2022	101000	113200	501010	96,132.27
CS	Equity & Justice	Office of Equal Opportunity	2022	101000	113200	501040	16,812.72
CS	Equity & Justice	Office of Equal Opportunity	2022	101000	113200	501080	23,847.93
CS	Equity & Justice	Office of Equal Opportunity	2022	101000	113200	501090	56.10
CS	Equity & Justice	Office of Equal Opportunity	2022	101000	113200	501100	14,730.00
CS	Equity & Justice	Office of Equal Opportunity	2022	101000	113200	501105	8,934.64
CS	Equity & Justice	Office of Equal Opportunity	2022	101000	113200	501115	33.66
CS	Equity & Justice	Office of Equal Opportunity	2022	101000	113200	501130	228.11
CS	Equity & Justice	Office of Equal Opportunity	2022	101000	113200	501140	145.13
CS	Equity & Justice	Office of Equal Opportunity	2022	101000	113200	511000	235.88
CS	Equity & Justice	Office of Equal Opportunity	2022	101000	113200	511010	102.88
CS	Equity & Justice	Office of Equal Opportunity	2022	101000	113200	520080	23.00
CS	Equity & Justice	Office of Equal Opportunity	2022	101000	113200	540170	254.50
CS	Equity & Justice	Office of Equal Opportunity	2022	101000	113200	540242	154.88

CSP Cat.	Department	Cost Center Description	Fiscal		Cost		Actuals
			Year	Fund	Center	Acct	
CS	Equity & Justice	Office of Equal Opportunity	2022	101000	113200	540650	198.00
CS	Municipal Attorney	Civil Law	2022	101000	115100	501010	1,247,877.08
CS	Municipal Attorney	Civil Law	2022	101000	115100	501040	113,983.84
CS	Municipal Attorney	Civil Law	2022	101000	115100	501080	293,181.17
CS	Municipal Attorney	Civil Law	2022	101000	115100	501090	524.48
CS	Municipal Attorney	Civil Law	2022	101000	115100	501100	243,746.00
CS	Municipal Attorney	Civil Law	2022	101000	115100	501105	103,818.99
CS	Municipal Attorney	Civil Law	2022	101000	115100	501115	306.90
CS	Municipal Attorney	Civil Law	2022	101000	115100	501130	2,746.21
CS	Municipal Attorney	Civil Law	2022	101000	115100	501140	1,772.79
CS	Municipal Attorney	Civil Law	2022	101000	115100	501240	2,232.48
CS	Municipal Attorney	Civil Law	2022	101000	115100	511000	1,092.65
CS	Municipal Attorney	Civil Law	2022	101000	115100	511010	1,419.84
CS	Municipal Attorney	Civil Law	2022	101000	115100	511050	1,746.96
CS	Municipal Attorney	Civil Law	2022	101000	115100	530060	26.00
CS	Municipal Attorney	Civil Law	2022	101000	115100	530380	114,178.48
CS	Municipal Attorney	Civil Law	2022	101000	115100	540030	3,855.60
CS	Municipal Attorney	Civil Law	2022	101000	115100	540040	6,285.00
CS	Municipal Attorney	Civil Law	2022	101000	115100	540050	499.00
CS	Municipal Attorney	Civil Law	2022	101000	115100	540170	3,299.26
CS	Municipal Attorney	Civil Law	2022	101000	115100	540242	1,418.10
CS	Municipal Attorney	Civil Law	2022	101000	115100	540620	31.38
CS	Municipal Attorney	Civil Law	2022	101000	115100	540640	22,854.40
CS	Municipal Attorney	Criminal	2022	101000	115200	501010	1,619,576.52
CS	Municipal Attorney	Criminal	2022	101000	115200	501020	26,991.72
CS	Municipal Attorney	Criminal	2022	101000	115200	501040	227,443.23
CS	Municipal Attorney	Criminal	2022	101000	115200	501080	398,559.38
CS	Municipal Attorney	Criminal	2022	101000	115200	501090	941.03
CS	Municipal Attorney	Criminal	2022	101000	115200	501100	517,930.80
CS	Municipal Attorney	Criminal	2022	101000	115200	501105	142,547.11
CS	Municipal Attorney	Criminal	2022	101000	115200	501115	555.48
CS	Municipal Attorney	Criminal	2022	101000	115200	501130	3,772.44
CS	Municipal Attorney	Criminal	2022	101000	115200	501140	2,440.57
CS	Municipal Attorney	Criminal	2022	101000	115200	511000	1,511.73
CS	Municipal Attorney	Criminal	2022	101000	115200	511010	5,938.94
CS	Municipal Attorney	Criminal	2022	101000	115200	511050	3,925.64
CS	Municipal Attorney	Criminal	2022	101000	115200	520080	844.12
CS	Municipal Attorney	Criminal	2022	101000	115200	530060	234.25
CS	Municipal Attorney	Criminal	2022	101000	115200	530360	10,193.18
CS	Municipal Attorney	Criminal	2022	101000	115200	530380	15,278.65
CS	Municipal Attorney	Criminal	2022	101000	115200	540030	102,506.93
CS	Municipal Attorney	Criminal	2022	101000	115200	540040	6,285.00
CS	Municipal Attorney	Criminal	2022	101000	115200	540050	1,550.00
CS	Municipal Attorney	Criminal	2022	101000	115200	540170	13,494.16
CS	Municipal Attorney	Criminal	2022	101000	115200	540200	5,030.16
CS	Municipal Attorney	Criminal	2022	101000	115200	540242	5,254.42
CS	Municipal Attorney	Criminal	2022	101000	115200	540300	3,288.00
CS	Municipal Attorney	Criminal	2022	101000	115200	540620	1,738.96
CS	Municipal Attorney	Criminal	2022	101000	115200	540640	45,738.02
CS	Municipal Attorney	Administrative Hearing	2022	101000	115300	501010	163,801.48
CS	Municipal Attorney	Administrative Hearing	2022	101000	115300	501020	13.50
CS	Municipal Attorney	Administrative Hearing	2022	101000	115300	501040	45,235.99
CS	Municipal Attorney	Administrative Hearing	2022	101000	115300	501080	40,444.57
CS	Municipal Attorney	Administrative Hearing	2022	101000	115300	501090	85.00
CS	Municipal Attorney	Administrative Hearing	2022	101000	115300	501100	37,406.00
CS	Municipal Attorney	Administrative Hearing	2022	101000	115300	501105	16,095.54
CS	Municipal Attorney	Administrative Hearing	2022	101000	115300	501115	49.50
CS	Municipal Attorney	Administrative Hearing	2022	101000	115300	501130	418.48
CS	Municipal Attorney	Administrative Hearing	2022	101000	115300	501140	252.24

CSP Cat.	Department	Cost Center Description	Fiscal		Cost		Actuals
			Year	Fund	Center	Acct	
CS	Municipal Attorney	Muni Attorney Administration	2022	101000	115400	501010	159,482.35
CS	Municipal Attorney	Muni Attorney Administration	2022	101000	115400	501040	17,422.73
CS	Municipal Attorney	Muni Attorney Administration	2022	101000	115400	501080	37,840.01
CS	Municipal Attorney	Muni Attorney Administration	2022	101000	115400	501090	66.30
CS	Municipal Attorney	Muni Attorney Administration	2022	101000	115400	501100	17,571.00
CS	Municipal Attorney	Muni Attorney Administration	2022	101000	115400	501105	13,920.43
CS	Municipal Attorney	Muni Attorney Administration	2022	101000	115400	501115	41.58
CS	Municipal Attorney	Muni Attorney Administration	2022	101000	115400	501130	359.06
CS	Municipal Attorney	Muni Attorney Administration	2022	101000	115400	501140	212.30
CS	Municipal Attorney	Muni Attorney Administration	2022	101000	115400	511000	(231.93)
CS	Municipal Attorney	Muni Attorney Administration	2022	101000	115400	530060	41.00
CS	Municipal Attorney	Muni Attorney Administration	2022	101000	115400	530360	2,203.30
CS	Municipal Attorney	Muni Attorney Administration	2022	101000	115400	530380	36.00
CS	Municipal Attorney	Muni Attorney Administration	2022	101000	115400	540040	675.00
CS	Municipal Attorney	Muni Attorney Administration	2022	101000	115400	540242	627.49
CS	Municipal Attorney	Muni Attorney Administration	2022	101000	115400	540640	1,108.56
CS	Municipal Manager	Muni Manager Admin	2022	101000	121000	501010	387,479.74
CS	Municipal Manager	Muni Manager Admin	2022	101000	121000	501020	37.73
CS	Municipal Manager	Muni Manager Admin	2022	101000	121000	501040	29,474.74
CS	Municipal Manager	Muni Manager Admin	2022	101000	121000	501080	88,568.96
CS	Municipal Manager	Muni Manager Admin	2022	101000	121000	501090	161.08
CS	Municipal Manager	Muni Manager Admin	2022	101000	121000	501100	102,500.38
CS	Municipal Manager	Muni Manager Admin	2022	101000	121000	501105	30,852.13
CS	Municipal Manager	Muni Manager Admin	2022	101000	121000	501115	94.55
CS	Municipal Manager	Muni Manager Admin	2022	101000	121000	501130	840.09
CS	Municipal Manager	Muni Manager Admin	2022	101000	121000	501140	521.83
CS	Municipal Manager	Muni Manager Admin	2022	101000	121000	511000	2,728.07
CS	Municipal Manager	Muni Manager Admin	2022	101000	121000	511010	3,126.59
CS	Municipal Manager	Muni Manager Admin	2022	101000	121000	511080	4.60
CS	Municipal Manager	Muni Manager Admin	2022	101000	121000	511090	1,188.88
CS	Municipal Manager	Muni Manager Admin	2022	101000	121000	511100	35.97
CS	Municipal Manager	Muni Manager Admin	2022	101000	121000	511330	2,795.88
CS	Municipal Manager	Muni Manager Admin	2022	101000	121000	511360	69.98
CS	Municipal Manager	Muni Manager Admin	2022	101000	121000	520040	4,969.98
CS	Municipal Manager	Muni Manager Admin	2022	101000	121000	520060	2,877.97
CS	Municipal Manager	Muni Manager Admin	2022	101000	121000	520080	575.00
CS	Municipal Manager	Muni Manager Admin	2022	101000	121000	530380	339.92
CS	Municipal Manager	Muni Manager Admin	2022	101000	121000	540040	2,500.00
CS	Municipal Manager	Muni Manager Admin	2022	101000	121000	540170	880.83
CS	Municipal Manager	Muni Manager Admin	2022	101000	121000	540242	1,275.36
CS	Municipal Manager	Muni Manager Admin	2022	101000	121000	540300	2,874.00
CS	Municipal Manager	Muni Manager Admin	2022	101000	121000	540440	50.00
CS	Municipal Manager	Muni Manager Admin	2022	101000	121000	540650	9,219.63
CS	Municipal Manager	Muni Manager Admin	2022	101000	121000	550010	45.12
CS	Municipal Manager	Muni Manager Admin	2022	101000	121000	590210	1,453.61
CS	Municipal Manager	Muni Manager Deputy Director	2022	101000	121010	501010	128,410.24
CS	Municipal Manager	Muni Manager Deputy Director	2022	101000	121010	501040	3,520.16
CS	Municipal Manager	Muni Manager Deputy Director	2022	101000	121010	501080	28,469.17
CS	Municipal Manager	Muni Manager Deputy Director	2022	101000	121010	501090	40.37
CS	Municipal Manager	Muni Manager Deputy Director	2022	101000	121010	501100	24,353.87
CS	Municipal Manager	Muni Manager Deputy Director	2022	101000	121010	501105	9,950.60
CS	Municipal Manager	Muni Manager Deputy Director	2022	101000	121010	501115	23.26
CS	Municipal Manager	Muni Manager Deputy Director	2022	101000	121010	501130	258.81
CS	Municipal Manager	Muni Manager Deputy Director	2022	101000	121010	501140	165.20
CS	Real Estate	Leases-Parking Garage	2022	101000	122301	540280	91,980.00
CS	Real Estate	Leases-City Hall	2022	101000	122302	540280	1,947,189.20
CS	Real Estate	Leases-City Hall	2022	101000	122302	580085	1,728,641.63
CS	Real Estate	Leases-City Hall	2022	101000	122302	580086	142,070.41
CS	Real Estate	Leases-City Hall	2022	101000	122302	580530	198,955.00

CSP Cat.	Department	Cost Center Description	Fiscal		Cost		Actuals
			Year	Fund	Center	Acct	
CS	Real Estate	Leases-ERTC	2022	101000	122303	540280	245,283.27
CS	Real Estate	Leases-ERTC	2022	101000	122303	580530	120,000.00
CS	Real Estate	Leases-Libraries	2022	101000	122304	580085	220,772.62
CS	Real Estate	Leases-Libraries	2022	101000	122304	580086	7,834.43
CS	Real Estate	Leases-Traffic	2022	101000	122306	580085	41,285.68
CS	Real Estate	Leases-Traffic	2022	101000	122306	580086	6,714.32
CS	Real Estate	Leases-Recreation	2022	101000	122307	580085	349,754.82
CS	Real Estate	Leases-Recreation	2022	101000	122307	580086	28,403.25
CS	Real Estate	Leases-Permit Center	2022	101000	122309	580085	1,027,819.77
CS	Real Estate	Leases-Permit Center	2022	101000	122309	580086	1,068,960.21
CS	Real Estate	Leases-Police	2022	101000	122310	540280	10.00
CS	Real Estate	Leases-Police	2022	101000	122310	580085	35,812.13
CS	Real Estate	Leases-Police	2022	101000	122310	580086	2,175.19
CS	Municipal Manager	Office of Emergency Management	2022	101000	124200	501010	183,669.36
CS	Municipal Manager	Office of Emergency Management	2022	101000	124200	501020	902.19
CS	Municipal Manager	Office of Emergency Management	2022	101000	124200	501040	49,934.36
CS	Municipal Manager	Office of Emergency Management	2022	101000	124200	501080	43,815.21
CS	Municipal Manager	Office of Emergency Management	2022	101000	124200	501090	101.18
CS	Municipal Manager	Office of Emergency Management	2022	101000	124200	501100	53,931.75
CS	Municipal Manager	Office of Emergency Management	2022	101000	124200	501105	17,025.65
CS	Municipal Manager	Office of Emergency Management	2022	101000	124200	501115	58.44
CS	Municipal Manager	Office of Emergency Management	2022	101000	124200	501130	446.25
CS	Municipal Manager	Office of Emergency Management	2022	101000	124200	501140	269.15
CS	Municipal Manager	Office of Emergency Management	2022	101000	124200	511000	6,864.83
CS	Municipal Manager	Office of Emergency Management	2022	101000	124200	511010	707.68
CS	Municipal Manager	Office of Emergency Management	2022	101000	124200	511050	772.09
CS	Municipal Manager	Office of Emergency Management	2022	101000	124200	530050	6,518.60
CS	Municipal Manager	Office of Emergency Management	2022	101000	124200	530360	2,663.00
CS	Municipal Manager	Office of Emergency Management	2022	101000	124200	530380	10,793.03
CS	Municipal Manager	Office of Emergency Management	2022	101000	124200	540040	3,835.00
CS	Municipal Manager	Office of Emergency Management	2022	101000	124200	540170	7,739.61
CS	Municipal Manager	Office of Emergency Management	2022	101000	124200	540271	783.42
CS	Municipal Manager	Office of Emergency Management	2022	101000	124200	540300	5,772.00
CS	Municipal Manager	Office of Emergency Management	2022	101000	124200	540650	271.75
CS	Municipal Manager	Office of Emergency Management	2022	101000	124200	550080	2,098.20
CS	Municipal Manager	Office of Emergency Management	2022	101000	124200	580010	454,636.12
CS	Municipal Manager	Office of Emergency Management	2022	101000	124200	580020	79,811.92
CS	Municipal Manager	Office of Emergency Management	2022	101000	124200	580030	3.07
CS	Municipal Manager	Office of Emergency Management	2022	101000	124200	580530	6,872.00
CS	Municipal Manager	Risk Management	2022	101000	124700	501010	170,669.85
CS	Municipal Manager	Risk Management	2022	101000	124700	501040	11,252.10
CS	Municipal Manager	Risk Management	2022	101000	124700	501080	40,015.17
CS	Municipal Manager	Risk Management	2022	101000	124700	501090	81.60
CS	Municipal Manager	Risk Management	2022	101000	124700	501100	51,384.00
CS	Municipal Manager	Risk Management	2022	101000	124700	501105	13,633.91
CS	Municipal Manager	Risk Management	2022	101000	124700	501115	47.52
CS	Municipal Manager	Risk Management	2022	101000	124700	501130	363.41
CS	Municipal Manager	Risk Management	2022	101000	124700	501140	245.52
CS	Municipal Manager	Risk Management	2022	101000	124700	511000	3,020.07
CS	Municipal Manager	Risk Management	2022	101000	124700	511010	22.58
CS	Municipal Manager	Risk Management	2022	101000	124700	511360	2,150.71
CS	Municipal Manager	Risk Management	2022	101000	124700	530380	19.18
CS	Municipal Manager	Risk Management	2022	101000	124700	540040	677.40
CS	Municipal Manager	Risk Management	2022	101000	124700	540170	303.24
CS	Municipal Manager	Risk Management	2022	101000	124700	540242	475.33
CS	Municipal Manager	Safety	2022	101000	124900	501010	84,738.65
CS	Municipal Manager	Safety	2022	101000	124900	501040	13,720.36
CS	Municipal Manager	Safety	2022	101000	124900	501080	19,882.86
CS	Municipal Manager	Safety	2022	101000	124900	501090	37.40

CSP			Fiscal	Cost			
Cat.	Department	Cost Center Description	Year	Fund	Center	Acct	Actuals
CS	Municipal Manager	Safety	2022	101000	124900	501100	16,212.00
CS	Municipal Manager	Safety	2022	101000	124900	501105	7,635.82
CS	Municipal Manager	Safety	2022	101000	124900	501115	21.78
CS	Municipal Manager	Safety	2022	101000	124900	501130	198.88
CS	Municipal Manager	Safety	2022	101000	124900	501140	129.21
CS	Municipal Manager	Safety	2022	101000	124900	511000	24,000.00
CS	Municipal Manager	Safety	2022	101000	124900	511130	3,600.00
CS	Municipal Manager	Safety	2022	101000	124900	530060	40.00
CS	Municipal Manager	Safety	2022	101000	124900	540242	37.39
CS	Municipal Manager	Safety	2022	101000	124900	540360	4,478.00
CS	Finance	Controller Administration	2022	101000	132100	501010	102,610.69
CS	Finance	Controller Administration	2022	101000	132100	501020	13,935.81
CS	Finance	Controller Administration	2022	101000	132100	501040	34,578.35
CS	Finance	Controller Administration	2022	101000	132100	501080	25,875.43
CS	Finance	Controller Administration	2022	101000	132100	501090	33.27
CS	Finance	Controller Administration	2022	101000	132100	501100	20,953.24
CS	Finance	Controller Administration	2022	101000	132100	501105	11,374.37
CS	Finance	Controller Administration	2022	101000	132100	501115	19.72
CS	Finance	Controller Administration	2022	101000	132100	501130	301.94
CS	Finance	Controller Administration	2022	101000	132100	501140	134.36
CS	Finance	Controller Administration	2022	101000	132100	511000	(80.00)
CS	Finance	Controller Administration	2022	101000	132100	511010	15,714.05
CS	Finance	Controller Administration	2022	101000	132100	511100	80.00
CS	Finance	Controller Administration	2022	101000	132100	511370	65.00
CS	Finance	Controller Administration	2022	101000	132100	530060	29.00
CS	Finance	Controller Administration	2022	101000	132100	530360	530.71
CS	Finance	Controller Administration	2022	101000	132100	530380	910.00
CS	Finance	Controller Administration	2022	101000	132100	540040	952.49
CS	Finance	Controller Administration	2022	101000	132100	540050	2,660.00
CS	Finance	Controller Administration	2022	101000	132100	540070	180.00
CS	Finance	Controller Administration	2022	101000	132100	540170	1,539.89
CS	Finance	Controller Administration	2022	101000	132100	540650	2,620.03
CS	Finance	Controller Administration	2022	101000	132100	590210	722.95
CS	Finance	Central Accounting	2022	101000	132200	501010	998,197.05
CS	Finance	Central Accounting	2022	101000	132200	501020	91,506.92
CS	Finance	Central Accounting	2022	101000	132200	501040	181,603.98
CS	Finance	Central Accounting	2022	101000	132200	501080	265,898.77
CS	Finance	Central Accounting	2022	101000	132200	501090	492.23
CS	Finance	Central Accounting	2022	101000	132200	501100	238,673.27
CS	Finance	Central Accounting	2022	101000	132200	501105	94,273.63
CS	Finance	Central Accounting	2022	101000	132200	501115	295.02
CS	Finance	Central Accounting	2022	101000	132200	501130	2,565.63
CS	Finance	Central Accounting	2022	101000	132200	501140	1,519.21
CS	Finance	Central Accounting	2022	101000	132200	530060	26.00
CS	Finance	Central Accounting	2022	101000	132200	540242	2,529.69
CS	Human Resources	Payroll	2022	101000	132300	501010	699,284.47
CS	Human Resources	Payroll	2022	101000	132300	501020	2,421.04
CS	Human Resources	Payroll	2022	101000	132300	501040	71,784.58
CS	Human Resources	Payroll	2022	101000	132300	501080	172,801.10
CS	Human Resources	Payroll	2022	101000	132300	501090	418.20
CS	Human Resources	Payroll	2022	101000	132300	501100	205,856.00
CS	Human Resources	Payroll	2022	101000	132300	501105	59,319.72
CS	Human Resources	Payroll	2022	101000	132300	501115	245.52
CS	Human Resources	Payroll	2022	101000	132300	501118	1,750.92
CS	Human Resources	Payroll	2022	101000	132300	501130	1,553.38
CS	Human Resources	Payroll	2022	101000	132300	501140	1,052.49
CS	Human Resources	Payroll	2022	101000	132300	511000	445.88
CS	Human Resources	Payroll	2022	101000	132300	511010	654.33
CS	Human Resources	Payroll	2022	101000	132300	520080	800.00

CSP Cat.	Department	Cost Center Description	Fiscal		Cost		Actuals
			Year	Fund	Center	Acct	
CS	Human Resources	Payroll	2022	101000	132300	530060	26.00
CS	Human Resources	Payroll	2022	101000	132300	530380	8,630.36
CS	Human Resources	Payroll	2022	101000	132300	540242	2,020.65
CS	Finance	Accounts Payable	2022	101000	132400	501010	137,553.74
CS	Finance	Accounts Payable	2022	101000	132400	501020	981.96
CS	Finance	Accounts Payable	2022	101000	132400	501040	15,941.29
CS	Finance	Accounts Payable	2022	101000	132400	501080	33,850.25
CS	Finance	Accounts Payable	2022	101000	132400	501090	81.60
CS	Finance	Accounts Payable	2022	101000	132400	501100	51,018.50
CS	Finance	Accounts Payable	2022	101000	132400	501105	11,484.63
CS	Finance	Accounts Payable	2022	101000	132400	501115	47.52
CS	Finance	Accounts Payable	2022	101000	132400	501130	307.72
CS	Finance	Accounts Payable	2022	101000	132400	501140	206.19
CS	Finance	Accounts Payable	2022	101000	132400	511000	6,510.00
CS	Finance	Accounts Payable	2022	101000	132400	540242	464.91
CS	Finance	Treasury Administration	2022	101000	134100	501010	223,568.57
CS	Finance	Treasury Administration	2022	101000	134100	501020	3,176.34
CS	Finance	Treasury Administration	2022	101000	134100	501040	21,412.11
CS	Finance	Treasury Administration	2022	101000	134100	501080	50,912.60
CS	Finance	Treasury Administration	2022	101000	134100	501090	100.30
CS	Finance	Treasury Administration	2022	101000	134100	501100	62,089.00
CS	Finance	Treasury Administration	2022	101000	134100	501105	18,652.49
CS	Finance	Treasury Administration	2022	101000	134100	501115	57.42
CS	Finance	Treasury Administration	2022	101000	134100	501130	489.96
CS	Finance	Treasury Administration	2022	101000	134100	501140	312.01
CS	Finance	Treasury Administration	2022	101000	134100	511000	1,969.26
CS	Finance	Treasury Administration	2022	101000	134100	511010	406.16
CS	Finance	Treasury Administration	2022	101000	134100	511360	287.87
CS	Finance	Treasury Administration	2022	101000	134100	530050	150.00
CS	Finance	Treasury Administration	2022	101000	134100	530060	26.00
CS	Finance	Treasury Administration	2022	101000	134100	530360	4,426.40
CS	Finance	Treasury Administration	2022	101000	134100	540040	1,069.19
CS	Finance	Treasury Administration	2022	101000	134100	540050	80.99
CS	Finance	Treasury Administration	2022	101000	134100	540220	44.11
CS	Finance	Treasury Administration	2022	101000	134100	540242	576.62
CS	Finance	Treasury Administration	2022	101000	134100	540271	137.04
CS	Finance	Treasury Administration	2022	101000	134100	540440	1,160.97
CS	Finance	Treasury Administration	2022	101000	134100	560010	1,750.00
CS	Finance	Treasury Administration	2022	101000	134100	590210	849.59
CS	Finance	Treasury Administration	2022	101000	134100	590230	1,931.63
CS	Finance	Revenue Management	2022	101000	134200	501010	919,378.33
CS	Finance	Revenue Management	2022	101000	134200	501020	21,603.79
CS	Finance	Revenue Management	2022	101000	134200	501040	105,766.23
CS	Finance	Revenue Management	2022	101000	134200	501080	228,858.87
CS	Finance	Revenue Management	2022	101000	134200	501090	596.64
CS	Finance	Revenue Management	2022	101000	134200	501100	351,613.81
CS	Finance	Revenue Management	2022	101000	134200	501105	77,981.24
CS	Finance	Revenue Management	2022	101000	134200	501115	347.52
CS	Finance	Revenue Management	2022	101000	134200	501130	2,085.75
CS	Finance	Revenue Management	2022	101000	134200	501140	1,384.16
CS	Finance	Revenue Management	2022	101000	134200	511000	7,030.21
CS	Finance	Revenue Management	2022	101000	134200	511010	1,668.15
CS	Finance	Revenue Management	2022	101000	134200	511080	13,935.51
CS	Finance	Revenue Management	2022	101000	134200	511090	1,970.00
CS	Finance	Revenue Management	2022	101000	134200	511360	121.79
CS	Finance	Revenue Management	2022	101000	134200	530050	47.50
CS	Finance	Revenue Management	2022	101000	134200	530360	975.00
CS	Finance	Revenue Management	2022	101000	134200	530380	7,324.49
CS	Finance	Revenue Management	2022	101000	134200	540030	22.00

CSP Cat.	Department	Cost Center Description	Fiscal		Cost		Actuals
			Year	Fund	Center	Acct	
CS	Finance	Revenue Management	2022	101000	134200	540040	4,857.57
CS	Finance	Revenue Management	2022	101000	134200	540050	3,510.00
CS	Finance	Revenue Management	2022	101000	134200	540200	46,073.11
CS	Finance	Revenue Management	2022	101000	134200	540220	37.16
CS	Finance	Revenue Management	2022	101000	134200	540242	3,518.57
CS	Finance	Revenue Management	2022	101000	134200	540260	5,250.00
CS	Finance	Revenue Management	2022	101000	134200	540315	398.50
CS	Finance	Revenue Management	2022	101000	134200	540650	656.00
CS	Finance	Revenue Management	2022	101000	134200	590210	2,838.89
CS	Finance	Revenue Management	2022	101000	134200	590230	804.30
CS	Finance	Tax Billing	2022	101000	134600	501010	265,519.61
CS	Finance	Tax Billing	2022	101000	134600	501020	4,280.13
CS	Finance	Tax Billing	2022	101000	134600	501040	28,773.22
CS	Finance	Tax Billing	2022	101000	134600	501080	66,135.62
CS	Finance	Tax Billing	2022	101000	134600	501090	214.69
CS	Finance	Tax Billing	2022	101000	134600	501100	113,099.40
CS	Finance	Tax Billing	2022	101000	134600	501105	23,395.78
CS	Finance	Tax Billing	2022	101000	134600	501115	126.50
CS	Finance	Tax Billing	2022	101000	134600	501130	622.36
CS	Finance	Tax Billing	2022	101000	134600	501140	389.37
CS	Finance	Tax Billing	2022	101000	134600	511000	8,608.78
CS	Finance	Tax Billing	2022	101000	134600	511010	681.09
CS	Finance	Tax Billing	2022	101000	134600	511080	54,104.91
CS	Finance	Tax Billing	2022	101000	134600	511090	193.51
CS	Finance	Tax Billing	2022	101000	134600	511360	58.94
CS	Finance	Tax Billing	2022	101000	134600	511380	10.38
CS	Finance	Tax Billing	2022	101000	134600	530050	132.50
CS	Finance	Tax Billing	2022	101000	134600	530060	26.00
CS	Finance	Tax Billing	2022	101000	134600	530360	787.05
CS	Finance	Tax Billing	2022	101000	134600	530377	6,857.46
CS	Finance	Tax Billing	2022	101000	134600	530380	16,850.94
CS	Finance	Tax Billing	2022	101000	134600	540010	541.45
CS	Finance	Tax Billing	2022	101000	134600	540180	355.00
CS	Finance	Tax Billing	2022	101000	134600	540242	810.35
CS	Finance	Tax Billing	2022	101000	134600	540260	1,293.06
CS	Finance	Tax Billing	2022	101000	134600	590200	5,660.98
CS	Finance	Tax Billing	2022	101000	134600	590210	4,470.12
CS	Finance	Tax Billing	2022	101000	134600	590230	4,259.01
CS	Finance	Remittance Processing	2022	101000	134700	501010	101,055.00
CS	Finance	Remittance Processing	2022	101000	134700	501020	1,607.83
CS	Finance	Remittance Processing	2022	101000	134700	501040	15,323.42
CS	Finance	Remittance Processing	2022	101000	134700	501080	24,725.04
CS	Finance	Remittance Processing	2022	101000	134700	501090	81.60
CS	Finance	Remittance Processing	2022	101000	134700	501100	51,384.00
CS	Finance	Remittance Processing	2022	101000	134700	501105	8,729.71
CS	Finance	Remittance Processing	2022	101000	134700	501115	47.52
CS	Finance	Remittance Processing	2022	101000	134700	501130	234.88
CS	Finance	Remittance Processing	2022	101000	134700	501140	149.28
CS	Finance	Remittance Processing	2022	101000	134700	511000	825.75
CS	Finance	Remittance Processing	2022	101000	134700	511010	664.33
CS	Finance	Remittance Processing	2022	101000	134700	530360	3,763.04
CS	Finance	Remittance Processing	2022	101000	134700	540200	14,750.10
CS	Finance	Remittance Processing	2022	101000	134700	540242	464.91
CS	Finance	Remittance Processing	2022	101000	134700	540260	6,750.00
CS	Chief Fiscal Officer	Chief Fiscal Officer	2022	101000	137000	501010	184,163.20
CS	Chief Fiscal Officer	Chief Fiscal Officer	2022	101000	137000	501040	16,443.15
CS	Chief Fiscal Officer	Chief Fiscal Officer	2022	101000	137000	501080	42,133.02
CS	Chief Fiscal Officer	Chief Fiscal Officer	2022	101000	137000	501090	74.80
CS	Chief Fiscal Officer	Chief Fiscal Officer	2022	101000	137000	501100	41,729.00

CSP Cat.	Department	Cost Center Description	Fiscal		Cost		Actuals
			Year	Fund	Center	Acct	
CS	Chief Fiscal Officer	Chief Fiscal Officer	2022	101000	137000	501105	15,848.76
CS	Chief Fiscal Officer	Chief Fiscal Officer	2022	101000	137000	501115	43.56
CS	Chief Fiscal Officer	Chief Fiscal Officer	2022	101000	137000	501130	423.68
CS	Chief Fiscal Officer	Chief Fiscal Officer	2022	101000	137000	501140	249.14
CS	Chief Fiscal Officer	Chief Fiscal Officer	2022	101000	137000	501240	1,130.56
CS	Chief Fiscal Officer	Chief Fiscal Officer	2022	101000	137000	511000	(25.00)
CS	Chief Fiscal Officer	Chief Fiscal Officer	2022	101000	137000	511010	2,305.49
CS	Chief Fiscal Officer	Chief Fiscal Officer	2022	101000	137000	520060	423.42
CS	Chief Fiscal Officer	Chief Fiscal Officer	2022	101000	137000	520070	264.00
CS	Chief Fiscal Officer	Chief Fiscal Officer	2022	101000	137000	520080	149.00
CS	Chief Fiscal Officer	Chief Fiscal Officer	2022	101000	137000	520090	168.87
CS	Chief Fiscal Officer	Chief Fiscal Officer	2022	101000	137000	530360	2,340.00
CS	Chief Fiscal Officer	Chief Fiscal Officer	2022	101000	137000	530380	10,142.50
CS	Chief Fiscal Officer	Chief Fiscal Officer	2022	101000	137000	540040	340.84
CS	Chief Fiscal Officer	Chief Fiscal Officer	2022	101000	137000	540050	599.00
CS	Chief Fiscal Officer	Chief Fiscal Officer	2022	101000	137000	540170	956.23
CS	Chief Fiscal Officer	Chief Fiscal Officer	2022	101000	137000	540242	585.65
CS	Chief Fiscal Officer	Chief Fiscal Officer	2022	101000	137000	540650	1,079.00
CS	Purchasing	Purchasing Services	2022	101000	138100	501010	833,705.94
CS	Purchasing	Purchasing Services	2022	101000	138100	501020	26,441.29
CS	Purchasing	Purchasing Services	2022	101000	138100	501040	95,417.73
CS	Purchasing	Purchasing Services	2022	101000	138100	501080	203,498.68
CS	Purchasing	Purchasing Services	2022	101000	138100	501090	439.43
CS	Purchasing	Purchasing Services	2022	101000	138100	501100	246,128.47
CS	Purchasing	Purchasing Services	2022	101000	138100	501105	72,363.30
CS	Purchasing	Purchasing Services	2022	101000	138100	501115	258.37
CS	Purchasing	Purchasing Services	2022	101000	138100	501130	1,914.67
CS	Purchasing	Purchasing Services	2022	101000	138100	501140	1,211.27
CS	Purchasing	Purchasing Services	2022	101000	138100	511000	12,431.13
CS	Purchasing	Purchasing Services	2022	101000	138100	511010	3,042.95
CS	Purchasing	Purchasing Services	2022	101000	138100	511030	329.00
CS	Purchasing	Purchasing Services	2022	101000	138100	511050	309.64
CS	Purchasing	Purchasing Services	2022	101000	138100	511090	2,051.00
CS	Purchasing	Purchasing Services	2022	101000	138100	511380	215.78
CS	Purchasing	Purchasing Services	2022	101000	138100	520040	599.66
CS	Purchasing	Purchasing Services	2022	101000	138100	520060	623.28
CS	Purchasing	Purchasing Services	2022	101000	138100	520080	1,000.00
CS	Purchasing	Purchasing Services	2022	101000	138100	530050	3,375.00
CS	Purchasing	Purchasing Services	2022	101000	138100	530060	369.20
CS	Purchasing	Purchasing Services	2022	101000	138100	530380	128,829.57
CS	Purchasing	Purchasing Services	2022	101000	138100	540040	495.00
CS	Purchasing	Purchasing Services	2022	101000	138100	540170	828.19
CS	Purchasing	Purchasing Services	2022	101000	138100	540242	2,172.63
CS	Purchasing	Purchasing Services	2022	101000	138100	540271	890.76
CS	Purchasing	Purchasing Services	2022	101000	138100	540300	345.00
CS	Purchasing	Purchasing Services	2022	101000	138100	540440	106.50
CS	Purchasing	Purchasing Services	2022	101000	138100	540650	(350.00)
CS	Management & Budget	Management & Budget	2022	101000	139100	501010	456,802.37
CS	Management & Budget	Management & Budget	2022	101000	139100	501020	10,579.45
CS	Management & Budget	Management & Budget	2022	101000	139100	501040	37,640.42
CS	Management & Budget	Management & Budget	2022	101000	139100	501080	107,130.03
CS	Management & Budget	Management & Budget	2022	101000	139100	501090	188.81
CS	Management & Budget	Management & Budget	2022	101000	139100	501100	117,821.38
CS	Management & Budget	Management & Budget	2022	101000	139100	501105	38,387.02
CS	Management & Budget	Management & Budget	2022	101000	139100	501115	108.90
CS	Management & Budget	Management & Budget	2022	101000	139100	501130	1,007.53
CS	Management & Budget	Management & Budget	2022	101000	139100	501140	640.68
CS	Management & Budget	Management & Budget	2022	101000	139100	511000	(35.00)
CS	Management & Budget	Management & Budget	2022	101000	139100	511010	9,470.04

CSP Cat.	Department	Cost Center Description	Fiscal		Cost		Actuals
			Year	Fund	Center	Acct	
CS	Management & Budget	Management & Budget	2022	101000	139100	511050	150.00
CS	Management & Budget	Management & Budget	2022	101000	139100	511080	17.43
CS	Management & Budget	Management & Budget	2022	101000	139100	511370	95.96
CS	Management & Budget	Management & Budget	2022	101000	139100	511380	186.78
CS	Management & Budget	Management & Budget	2022	101000	139100	530050	150.00
CS	Management & Budget	Management & Budget	2022	101000	139100	530060	48.00
CS	Management & Budget	Management & Budget	2022	101000	139100	530380	75,678.71
CS	Management & Budget	Management & Budget	2022	101000	139100	540040	915.83
CS	Management & Budget	Management & Budget	2022	101000	139100	540070	4,376.00
CS	Management & Budget	Management & Budget	2022	101000	139100	540170	737.16
CS	Management & Budget	Management & Budget	2022	101000	139100	540200	15,625.00
CS	Management & Budget	Management & Budget	2022	101000	139100	540242	658.80
CS	Management & Budget	Management & Budget	2022	101000	139100	540271	6,737.04
CS	Management & Budget	Management & Budget	2022	101000	139100	540315	62.25
CS	Information Technology	Reprographics	2022	101000	142300	501010	260,838.91
CS	Information Technology	Reprographics	2022	101000	142300	501020	152.22
CS	Information Technology	Reprographics	2022	101000	142300	501040	28,271.51
CS	Information Technology	Reprographics	2022	101000	142300	501080	62,198.16
CS	Information Technology	Reprographics	2022	101000	142300	501090	203.89
CS	Information Technology	Reprographics	2022	101000	142300	501100	105,264.62
CS	Information Technology	Reprographics	2022	101000	142300	501105	21,976.50
CS	Information Technology	Reprographics	2022	101000	142300	501115	118.80
CS	Information Technology	Reprographics	2022	101000	142300	501130	577.65
CS	Information Technology	Reprographics	2022	101000	142300	501140	384.30
CS	Information Technology	Reprographics	2022	101000	142300	511000	41,698.77
CS	Information Technology	Reprographics	2022	101000	142300	511010	316.27
CS	Information Technology	Reprographics	2022	101000	142300	511050	784.96
CS	Information Technology	Reprographics	2022	101000	142300	511080	214,520.00
CS	Information Technology	Reprographics	2022	101000	142300	511090	689.84
CS	Information Technology	Reprographics	2022	101000	142300	511330	3,690.98
CS	Information Technology	Reprographics	2022	101000	142300	511380	491.40
CS	Information Technology	Reprographics	2022	101000	142300	530360	9,190.00
CS	Information Technology	Reprographics	2022	101000	142300	540160	19,128.47
CS	Information Technology	Reprographics	2022	101000	142300	540200	4,740.12
CS	Information Technology	Reprographics	2022	101000	142300	540242	1,172.70
CS	Information Technology	Reprographics	2022	101000	142300	540250	125,570.35
CS	Information Technology	Reprographics	2022	101000	142300	540271	7,185.00
CS	Information Technology	Reprographics	2022	101000	142300	540300	3,816.00
CS	Information Technology	Reprographics	2022	101000	142300	570200	19,670.00
CS	Information Technology	Records Management	2022	101000	142400	501010	97,456.65
CS	Information Technology	Records Management	2022	101000	142400	501040	10,572.56
CS	Information Technology	Records Management	2022	101000	142400	501080	24,924.71
CS	Information Technology	Records Management	2022	101000	142400	501090	81.60
CS	Information Technology	Records Management	2022	101000	142400	501100	29,717.00
CS	Information Technology	Records Management	2022	101000	142400	501105	8,421.64
CS	Information Technology	Records Management	2022	101000	142400	501115	47.52
CS	Information Technology	Records Management	2022	101000	142400	501130	215.54
CS	Information Technology	Records Management	2022	101000	142400	501140	178.32
CS	Information Technology	Records Management	2022	101000	142400	511360	89.49
CS	Information Technology	Records Management	2022	101000	142400	511410	1,299.00
CS	Information Technology	Records Management	2022	101000	142400	530380	44,839.38
CS	Information Technology	Records Management	2022	101000	142400	540040	314.90
CS	Information Technology	Records Management	2022	101000	142400	540050	705.00
CS	Information Technology	Records Management	2022	101000	142400	540242	232.45
CS	Information Technology	Records Management	2022	101000	142400	540271	16,185.00
CS	Human Resources	Employee Relations Admin	2022	101000	181000	501010	299,517.98
CS	Human Resources	Employee Relations Admin	2022	101000	181000	501040	22,684.64
CS	Human Resources	Employee Relations Admin	2022	101000	181000	501080	69,334.41
CS	Human Resources	Employee Relations Admin	2022	101000	181000	501090	122.40

CSP Cat.	Department	Cost Center Description	Fiscal		Cost		Actuals
			Year	Fund	Center	Acct	
CS	Human Resources	Employee Relations Admin	2022	101000	181000	501100	76,005.50
CS	Human Resources	Employee Relations Admin	2022	101000	181000	501105	24,908.61
CS	Human Resources	Employee Relations Admin	2022	101000	181000	501115	69.30
CS	Human Resources	Employee Relations Admin	2022	101000	181000	501130	658.19
CS	Human Resources	Employee Relations Admin	2022	101000	181000	501140	392.64
CS	Human Resources	Employee Relations Admin	2022	101000	181000	501270	9,439.62
CS	Human Resources	Employee Relations Admin	2022	101000	181000	511000	4,266.29
CS	Human Resources	Employee Relations Admin	2022	101000	181000	511010	3,865.30
CS	Human Resources	Employee Relations Admin	2022	101000	181000	511090	2,132.00
CS	Human Resources	Employee Relations Admin	2022	101000	181000	511360	5,969.85
CS	Human Resources	Employee Relations Admin	2022	101000	181000	511380	4,725.18
CS	Human Resources	Employee Relations Admin	2022	101000	181000	520040	599.66
CS	Human Resources	Employee Relations Admin	2022	101000	181000	520060	623.28
CS	Human Resources	Employee Relations Admin	2022	101000	181000	520080	1,000.00
CS	Human Resources	Employee Relations Admin	2022	101000	181000	530060	80.25
CS	Human Resources	Employee Relations Admin	2022	101000	181000	530380	1,416.43
CS	Human Resources	Employee Relations Admin	2022	101000	181000	540050	3,500.00
CS	Human Resources	Employee Relations Admin	2022	101000	181000	540170	7,384.40
CS	Human Resources	Employee Relations Admin	2022	101000	181000	540200	1,700.00
CS	Human Resources	Employee Relations Admin	2022	101000	181000	540220	6.25
CS	Human Resources	Employee Relations Admin	2022	101000	181000	540242	741.93
CS	Human Resources	Employee Relations Admin	2022	101000	181000	590210	5,662.86
CS	Human Resources	Labor Relations	2022	101000	184100	501010	560,565.68
CS	Human Resources	Labor Relations	2022	101000	184100	501020	4,010.83
CS	Human Resources	Labor Relations	2022	101000	184100	501040	52,914.50
CS	Human Resources	Labor Relations	2022	101000	184100	501080	133,469.22
CS	Human Resources	Labor Relations	2022	101000	184100	501090	280.50
CS	Human Resources	Labor Relations	2022	101000	184100	501100	176,632.50
CS	Human Resources	Labor Relations	2022	101000	184100	501105	46,416.91
CS	Human Resources	Labor Relations	2022	101000	184100	501115	164.34
CS	Human Resources	Labor Relations	2022	101000	184100	501130	1,229.86
CS	Human Resources	Labor Relations	2022	101000	184100	501140	793.95
CS	Human Resources	Labor Relations	2022	101000	184100	511010	161.29
CS	Human Resources	Labor Relations	2022	101000	184100	520080	84.00
CS	Human Resources	Labor Relations	2022	101000	184100	530380	56,360.00
CS	Human Resources	Labor Relations	2022	101000	184100	540050	549.00
CS	Human Resources	Labor Relations	2022	101000	184100	540220	258.27
CS	Human Resources	Labor Relations	2022	101000	184100	540242	1,475.98
CS	Human Resources	Labor Relations	2022	101000	184100	540271	911.92
CS	Human Resources	Labor Relations	2022	101000	184100	590210	1,967.04
CS	Human Resources	Labor Relations	2022	101000	184100	590230	2,162.00
CS	Human Resources	Employment	2022	101000	184500	501010	880,314.96
CS	Human Resources	Employment	2022	101000	184500	501020	22,124.82
CS	Human Resources	Employment	2022	101000	184500	501040	99,005.47
CS	Human Resources	Employment	2022	101000	184500	501080	218,285.13
CS	Human Resources	Employment	2022	101000	184500	501090	545.70
CS	Human Resources	Employment	2022	101000	184500	501100	343,630.50
CS	Human Resources	Employment	2022	101000	184500	501105	75,190.88
CS	Human Resources	Employment	2022	101000	184500	501115	316.80
CS	Human Resources	Employment	2022	101000	184500	501130	1,997.04
CS	Human Resources	Employment	2022	101000	184500	501140	1,310.19
CS	Human Resources	Employment	2022	101000	184500	511010	83.84
CS	Human Resources	Employment	2022	101000	184500	511380	450.54
CS	Human Resources	Employment	2022	101000	184500	530060	1,806.62
CS	Human Resources	Employment	2022	101000	184500	530380	73,698.83
CS	Human Resources	Employment	2022	101000	184500	540200	624.11
CS	Human Resources	Employment	2022	101000	184500	540242	2,691.68
CS	Human Resources	Employment	2022	101000	184500	540271	911.92
CS	Human Resources	Employment	2022	101000	184500	590200	503.77

CSP Cat.	Department	Cost Center Description	Fiscal		Cost		Actuals
			Year	Fund	Center	Acct	
CS	Human Resources	Benefits	2022	101000	187100	501010	234,196.31
CS	Human Resources	Benefits	2022	101000	187100	501020	27.65
CS	Human Resources	Benefits	2022	101000	187100	501040	15,764.74
CS	Human Resources	Benefits	2022	101000	187100	501080	54,846.61
CS	Human Resources	Benefits	2022	101000	187100	501090	124.18
CS	Human Resources	Benefits	2022	101000	187100	501100	78,788.79
CS	Human Resources	Benefits	2022	101000	187100	501105	19,187.95
CS	Human Resources	Benefits	2022	101000	187100	501115	72.85
CS	Human Resources	Benefits	2022	101000	187100	501118	6.49
CS	Human Resources	Benefits	2022	101000	187100	501130	514.98
CS	Human Resources	Benefits	2022	101000	187100	501140	339.97
CS	Human Resources	Benefits	2022	101000	187100	511010	2,279.50
CS	Human Resources	Benefits	2022	101000	187100	511360	97.17
CS	Human Resources	Benefits	2022	101000	187100	530380	70,080.25
CS	Human Resources	Benefits	2022	101000	187100	540242	923.86
CS	Human Resources	Benefits	2022	101000	187100	590200	1,554.51
CS	Human Resources	Benefits	2022	101000	187100	590230	4,989.00
CS	Community Development	OECD Admin	2022	101000	510500	501010	126,047.39
CS	Community Development	OECD Admin	2022	101000	510500	501040	6,168.72
CS	Community Development	OECD Admin	2022	101000	510500	501080	29,657.96
CS	Community Development	OECD Admin	2022	101000	510500	501090	40.57
CS	Community Development	OECD Admin	2022	101000	510500	501100	10,325.89
CS	Community Development	OECD Admin	2022	101000	510500	501105	10,315.56
CS	Community Development	OECD Admin	2022	101000	510500	501115	24.75
CS	Community Development	OECD Admin	2022	101000	510500	501130	267.72
CS	Community Development	OECD Admin	2022	101000	510500	501140	174.55
CS	Community Development	OECD Admin	2022	101000	510500	511000	530.24
CS	Community Development	OECD Admin	2022	101000	510500	511100	179.01
CS	Community Development	OECD Admin	2022	101000	510500	530060	50.00
CS	Community Development	OECD Admin	2022	101000	510500	530375	131.25
CS	Community Development	OECD Admin	2022	101000	510500	540170	185.08
CS	Community Development	OECD Admin	2022	101000	510500	540242	351.83
CS	Community Development	OECD Admin	2022	101000	510500	540300	3,792.00
CS	Community Development	OECD Admin	2022	101000	510500	550010	430.61
CS	Community Development	OECD Data & Analytics	2022	101000	510600	501010	273,174.33
CS	Community Development	OECD Data & Analytics	2022	101000	510600	501040	40,237.40
CS	Community Development	OECD Data & Analytics	2022	101000	510600	501080	64,223.38
CS	Community Development	OECD Data & Analytics	2022	101000	510600	501090	129.20
CS	Community Development	OECD Data & Analytics	2022	101000	510600	501100	80,583.00
CS	Community Development	OECD Data & Analytics	2022	101000	510600	501105	23,516.91
CS	Community Development	OECD Data & Analytics	2022	101000	510600	501115	75.24
CS	Community Development	OECD Data & Analytics	2022	101000	510600	501130	629.15
CS	Community Development	OECD Data & Analytics	2022	101000	510600	501140	405.19
CS	Community Development	OECD Data & Analytics	2022	101000	510600	511010	1,269.51
CS	Community Development	OECD Data & Analytics	2022	101000	510600	511360	4,616.18
CS	Community Development	OECD Data & Analytics	2022	101000	510600	511410	51.00
CS	Community Development	OECD Data & Analytics	2022	101000	510600	520070	216.00
CS	Community Development	OECD Data & Analytics	2022	101000	510600	530380	132,510.00
CS	Community Development	OECD Data & Analytics	2022	101000	510600	540070	5,619.28
CS	Community Development	OECD Data & Analytics	2022	101000	510600	540170	1,651.71
CS	Community Development	OECD Data & Analytics	2022	101000	510600	540200	328,570.00
CS	Community Development	OECD Data & Analytics	2022	101000	510600	540242	(38.82)
CS	Community Development	OECD Data & Analytics	2022	101000	510600	550010	373.67
CS	Community Development	OECD Data & Analytics	2022	101000	510600	570210	9,489.58
CS	Community Development	OECD Data & Analytics	2022	101000	510600	590210	2,523.26
CS	Maintenance & Operation	Facility Maintenance	2022	101000	710500	501010	2,143,449.32
CS	Maintenance & Operation	Facility Maintenance	2022	101000	710500	501020	49,751.11
CS	Maintenance & Operation	Facility Maintenance	2022	101000	710500	501040	282,759.87
CS	Maintenance & Operation	Facility Maintenance	2022	101000	710500	501080	526,228.24

CSP Cat.	Department	Cost Center Description	Fiscal		Cost		Actuals
			Year	Fund	Center	Acct	
CS	Maintenance & Operation	Facility Maintenance	2022	101000	710500	501090	1,060.56
CS	Maintenance & Operation	Facility Maintenance	2022	101000	710500	501100	634,936.29
CS	Maintenance & Operation	Facility Maintenance	2022	101000	710500	501105	190,248.75
CS	Maintenance & Operation	Facility Maintenance	2022	101000	710500	501115	628.61
CS	Maintenance & Operation	Facility Maintenance	2022	101000	710500	501118	6,470.11
CS	Maintenance & Operation	Facility Maintenance	2022	101000	710500	501130	5,000.69
CS	Maintenance & Operation	Facility Maintenance	2022	101000	710500	501140	1,665.19
CS	Maintenance & Operation	Facility Maintenance	2022	101000	710500	501160	2,000.00
CS	Maintenance & Operation	Facility Maintenance	2022	101000	710500	511000	124,227.88
CS	Maintenance & Operation	Facility Maintenance	2022	101000	710500	511010	2,476.41
CS	Maintenance & Operation	Facility Maintenance	2022	101000	710500	511330	67,032.15
CS	Maintenance & Operation	Facility Maintenance	2022	101000	710500	511340	11,848.32
CS	Maintenance & Operation	Facility Maintenance	2022	101000	710500	530360	5,920.98
CS	Maintenance & Operation	Facility Maintenance	2022	101000	710500	530380	82.82
CS	Maintenance & Operation	Facility Maintenance	2022	101000	710500	540070	150.00
CS	Maintenance & Operation	Facility Maintenance	2022	101000	710500	540271	18,485.00
CS	Maintenance & Operation	Facility Maintenance	2022	101000	710500	540300	124,399.00
CS	Maintenance & Operation	Facility Maintenance	2022	101000	710500	540610	0.40
CS	Maintenance & Operation	Facility Maintenance	2022	101000	710500	540640	49,891.51
CS	Maintenance & Operation	Facility Maintenance	2022	101000	710500	550080	5,373.39
CS	Maintenance & Operation	Facility Maintenance	2022	101000	710500	580530	675,963.00
CS	Maintenance & Operation	Facilities-Girdwood	2022	101000	710503	511000	13,344.12
CS	Maintenance & Operation	Facilities-Girdwood	2022	101000	710503	530360	2,145.48
CS	Maintenance & Operation	Facilities-Girdwood	2022	101000	710503	540170	197.35
CS	Maintenance & Operation	Facilities-Girdwood	2022	101000	710503	540610	110.50
CS	Maintenance & Operation	Facilities-Girdwood	2022	101000	710503	540640	31,748.64
CS	Maintenance & Operation	Facilities-Eagle River Town Cen	2022	101000	710506	511000	4,043.13
CS	Maintenance & Operation	Facilities-Eagle River Town Cen	2022	101000	710506	530360	4,193.44
CS	Maintenance & Operation	Facilities-Eagle River Town Cen	2022	101000	710506	540610	1.18
CS	Maintenance & Operation	Facilities-Eagle River Town Cen	2022	101000	710506	540640	13,157.52
CS	Maintenance & Operation	Facilities-Eagle River Town Cen	2022	101000	710506	550080	91,332.44
CS	Maintenance & Operation	Facilities-Fire Stations	2022	101000	710509	511000	103,043.54
CS	Maintenance & Operation	Facilities-Fire Stations	2022	101000	710509	511010	5,324.12
CS	Maintenance & Operation	Facilities-Fire Stations	2022	101000	710509	530360	116,564.40
CS	Maintenance & Operation	Facilities-Fire Stations	2022	101000	710509	540170	900.99
CS	Maintenance & Operation	Facilities-Fire Stations	2022	101000	710509	540610	1,790.46
CS	Maintenance & Operation	Facilities-Fire Stations	2022	101000	710509	540640	427,708.87
CS	Maintenance & Operation	Facilities-Fire Stations	2022	101000	710509	550080	863,643.94
CS	Maintenance & Operation	Facilities-Libraries	2022	101000	710512	511000	66,063.70
CS	Maintenance & Operation	Facilities-Libraries	2022	101000	710512	530360	20,308.30
CS	Maintenance & Operation	Facilities-Libraries	2022	101000	710512	540170	10,797.69
CS	Maintenance & Operation	Facilities-Libraries	2022	101000	710512	540610	960.33
CS	Maintenance & Operation	Facilities-Libraries	2022	101000	710512	540640	1,218,294.28
CS	Maintenance & Operation	Facilities-Libraries	2022	101000	710512	550080	432,899.04
CS	Maintenance & Operation	Facilities-Fac Maint Whse	2022	101000	710515	511000	22,420.09
CS	Maintenance & Operation	Facilities-Fac Maint Whse	2022	101000	710515	511010	4,580.00
CS	Maintenance & Operation	Facilities-Fac Maint Whse	2022	101000	710515	530360	2,306.67
CS	Maintenance & Operation	Facilities-Fac Maint Whse	2022	101000	710515	540170	4,316.84
CS	Maintenance & Operation	Facilities-Fac Maint Whse	2022	101000	710515	540610	341.55
CS	Maintenance & Operation	Facilities-Fac Maint Whse	2022	101000	710515	540640	95,174.01
CS	Maintenance & Operation	Facilities-Fac Maint Whse	2022	101000	710515	550080	69,934.28
CS	Maintenance & Operation	Facilities-Traffic	2022	101000	710518	511000	2,805.00
CS	Maintenance & Operation	Facilities-Traffic	2022	101000	710518	530360	1,195.00
CS	Maintenance & Operation	Facilities-Traffic	2022	101000	710518	540610	7.10
CS	Maintenance & Operation	Facilities-Traffic	2022	101000	710518	540640	10,582.17
CS	Maintenance & Operation	Facilities-Traffic	2022	101000	710518	550080	37,901.46
CS	Maintenance & Operation	Facilities-RES/Historical Proper	2022	101000	710521	511000	2,006.87
CS	Maintenance & Operation	Facilities-RES/Historical Proper	2022	101000	710521	530360	1,065.00
CS	Maintenance & Operation	Facilities-RES/Historical Proper	2022	101000	710521	540170	392.37

CSP Cat.	Department	Cost Center Description	Fiscal		Cost		Actuals
			Year	Fund	Center	Acct	
CS	Maintenance & Operation Facilities-RES/Historical Proper		2022	101000	710521	540610	37.86
CS	Maintenance & Operation Facilities-RES/Historical Proper		2022	101000	710521	540640	20,869.20
CS	Maintenance & Operation Facilities-RES/Historical Proper		2022	101000	710521	550080	5,720.95
CS	Maintenance & Operation Facilities-Areawide Parks & Rec		2022	101000	710524	511000	110,204.74
CS	Maintenance & Operation Facilities-Areawide Parks & Rec		2022	101000	710524	530360	24,301.85
CS	Maintenance & Operation Facilities-Areawide Parks & Rec		2022	101000	710524	540170	11,865.19
CS	Maintenance & Operation Facilities-Areawide Parks & Rec		2022	101000	710524	540610	328.35
CS	Maintenance & Operation Facilities-Areawide Parks & Rec		2022	101000	710524	540640	323,696.62
CS	Maintenance & Operation Facilities-Areawide Parks & Rec		2022	101000	710524	550080	28,749.02
CS	Maintenance & Operation Facilities-Health and Human Se		2022	101000	710527	511000	39,873.27
CS	Maintenance & Operation Facilities-Health and Human Se		2022	101000	710527	530360	36,755.50
CS	Maintenance & Operation Facilities-Health and Human Se		2022	101000	710527	540170	1,307.55
CS	Maintenance & Operation Facilities-Health and Human Se		2022	101000	710527	540610	355.20
CS	Maintenance & Operation Facilities-Health and Human Se		2022	101000	710527	540640	411,715.37
CS	Maintenance & Operation Facilities-Health and Human Se		2022	101000	710527	550080	298,273.21
CS	Maintenance & Operation Facilities-ARDSA		2022	101000	710530	511000	569.07
CS	Maintenance & Operation Facilities-ARDSA		2022	101000	710530	530360	2,698.24
CS	Maintenance & Operation Facilities-ARDSA		2022	101000	710530	540610	8.34
CS	Maintenance & Operation Facilities-ARDSA		2022	101000	710530	540640	7,086.86
CS	Maintenance & Operation Facilities-ARDSA		2022	101000	710530	550080	979.78
CS	Maintenance & Operation Facilities-Transit/Centers/Park &		2022	101000	710533	511000	59,757.02
CS	Maintenance & Operation Facilities-Transit/Centers/Park &		2022	101000	710533	530360	44,903.16
CS	Maintenance & Operation Facilities-Transit/Centers/Park &		2022	101000	710533	540170	4,402.89
CS	Maintenance & Operation Facilities-Transit/Centers/Park &		2022	101000	710533	540610	749.67
CS	Maintenance & Operation Facilities-Transit/Centers/Park &		2022	101000	710533	540640	324,053.91
CS	Maintenance & Operation Facilities-Transit/Centers/Park &		2022	101000	710533	550080	702,938.59
CS	Maintenance & Operation Facilities-Fleet Maint		2022	101000	710536	511000	20,468.89
CS	Maintenance & Operation Facilities-Fleet Maint		2022	101000	710536	530360	17,525.85
CS	Maintenance & Operation Facilities-Fleet Maint		2022	101000	710536	540170	455.40
CS	Maintenance & Operation Facilities-Fleet Maint		2022	101000	710536	540610	71.79
CS	Maintenance & Operation Facilities-Fleet Maint		2022	101000	710536	540640	35,399.28
CS	Maintenance & Operation Facilities-Fleet Maint		2022	101000	710536	550080	143,748.70
CS	Maintenance & Operation Facilities-Police / Substations		2022	101000	710539	511000	53,241.92
CS	Maintenance & Operation Facilities-Police / Substations		2022	101000	710539	530360	35,169.23
CS	Maintenance & Operation Facilities-Police / Substations		2022	101000	710539	540170	2,048.43
CS	Maintenance & Operation Facilities-Police / Substations		2022	101000	710539	540610	614.02
CS	Maintenance & Operation Facilities-Police / Substations		2022	101000	710539	540640	467,016.46
CS	Maintenance & Operation Facilities-Police / Substations		2022	101000	710539	550080	441,957.04
CS	Maintenance & Operation Facilities-Eagle River Parks & R		2022	101000	710542	511000	1,339.55
CS	Maintenance & Operation Facilities-Eagle River Parks & R		2022	101000	710542	540610	0.32
CS	Maintenance & Operation Facilities-Eagle River Parks & R		2022	101000	710542	540640	31.68
CS	Maintenance & Operation Facilities-City Hall		2022	101000	710545	511000	4,710.69
CS	Maintenance & Operation Facilities-City Hall		2022	101000	710545	540170	1,192.08
CS	Maintenance & Operation Facilities-City Hall		2022	101000	710545	540640	168,485.27
CS	Maintenance & Operation Facilities-Eagle River Parks & R		2022	101000	710548	511000	630.70
CS	Maintenance & Operation Facilities-Eagle River Parks & R		2022	101000	710548	530360	129.00
CS	Maintenance & Operation Facilities-Eagle River Parks & R		2022	101000	710551	511000	10,831.23
CS	Maintenance & Operation Facilities-Eagle River Parks & R		2022	101000	710551	540640	326.70
CS	Maintenance & Operation Facilities-Areawide Parks & Rec		2022	101000	710554	511000	38,861.33
CS	Maintenance & Operation Facilities-Areawide Parks & Rec		2022	101000	710554	530360	3,367.76
CS	Maintenance & Operation Facilities-Areawide Parks & Rec		2022	101000	710554	540610	6.10
CS	Maintenance & Operation Facilities-Areawide Parks & Rec		2022	101000	710554	540640	5,710.75
CS	Maintenance & Operation Facilities-Heritage Land Bank		2022	101000	710557	511000	157.65
CS	Maintenance & Operation Facilities-Heritage Land Bank		2022	101000	710557	540170	1,875.00
CS	Maintenance & Operation Facilities-Heritage Land Bank		2022	101000	710557	550080	12,514.88
CS	Maintenance & Operation Facilities-Chugiak Fire Service /		2022	101000	710560	511000	2,816.88
CS	Maintenance & Operation Facilities-Chugiak Fire Service /		2022	101000	710560	530360	315.00
CS	Maintenance & Operation Facilities-Chugiak Fire Service /		2022	101000	710560	540640	10,517.00
CS	Maintenance & Operation Facilities-Chugiak Fire Service /		2022	101000	710560	550080	17,312.65

CSP Cat.	Department	Cost Center Description	Fiscal		Cost		Actuals
			Year	Fund	Center	Acct	
CS	Maintenance & Operation Facilities-CBERRSA		2022	101000	710562	540610	0.73
CS	Maintenance & Operation Facilities-CBERRSA		2022	101000	710562	540640	72.27
CS	Maintenance & Operation Facilities-NC HJ Mac Mem Ctr		2022	101000	710563	511000	1,785.93
CS	Maintenance & Operation Facilities-NC HJ Mac Mem Ctr		2022	101000	710563	540640	3,954.81
CS	Maintenance & Operation Facilities-NC Sullivan Arena		2022	101000	710566	511000	1,988.61
CS	Maintenance & Operation Facilities-NC Sullivan Arena		2022	101000	710566	530360	1,123.13
CS	Maintenance & Operation Facilities-NC Sullivan Arena		2022	101000	710566	530380	456.58
CS	Maintenance & Operation Facilities-NC Sullivan Arena		2022	101000	710566	540640	340.00
CS	Maintenance & Operation Facilities-NC Egan Center		2022	101000	710569	530360	660.00
CS	Maintenance & Operation Facilities-NC Egan Center		2022	101000	710569	550080	6,390.99
CS	Maintenance & Operation Facilities-NC Performing Arts Ce		2022	101000	710575	511000	207.29
CS	Maintenance & Operation Facilities-NC Performing Arts Ce		2022	101000	710575	530360	50.00
CS	Maintenance & Operation Facilities-NC Performing Arts Ce		2022	101000	710575	540610	298.00
CS	Maintenance & Operation Facilities-NC Performing Arts Ce		2022	101000	710575	540640	35,801.47
CS	Maintenance & Operation Facilities-NC Anchorage Museu		2022	101000	710581	540170	2,340.91
CS	Maintenance & Operation Facilities-NC Anchorage Museu		2022	101000	710581	540640	8,664.09
CS	Maintenance & Operation Facility Capital Improvements		2022	101000	710800	501010	134,237.41
CS	Maintenance & Operation Facility Capital Improvements		2022	101000	710800	501040	28,640.50
CS	Maintenance & Operation Facility Capital Improvements		2022	101000	710800	501080	44,706.03
CS	Maintenance & Operation Facility Capital Improvements		2022	101000	710800	501090	59.07
CS	Maintenance & Operation Facility Capital Improvements		2022	101000	710800	501100	37,680.98
CS	Maintenance & Operation Facility Capital Improvements		2022	101000	710800	501105	12,013.81
CS	Maintenance & Operation Facility Capital Improvements		2022	101000	710800	501115	37.09
CS	Maintenance & Operation Facility Capital Improvements		2022	101000	710800	501130	322.79
CS	Maintenance & Operation Facility Capital Improvements		2022	101000	710800	501140	223.99
CS	Maintenance & Operation Facility Capital Improvements		2022	101000	710800	511090	1,961.00
CS	Maintenance & Operation Facility Capital Improvements		2022	101000	710800	511330	3,989.12
CS	Maintenance & Operation Facility Capital Improvements		2022	101000	710800	540170	1,563.08
CS	Maintenance & Operation Facility Capital Improvements		2022	101000	710800	540300	11,511.00
CS	Maintenance & Operation Facility Capital Improvements		2022	101000	710800	550010	271.84
CS	Maintenance & Operation Facility Capital Improvements		2022	101000	710800	580010	361,712.12
CS	Maintenance & Operation Facility Capital Improvements		2022	101000	710800	580020	260,036.75
CS	Maintenance & Operation Facility Capital Improvements		2022	101000	710800	580030	2.42
CS	Information Technology Admin Support		2022	607000	141100	501010	630,050.91
CS	Information Technology Admin Support		2022	607000	141100	501020	7,060.35
CS	Information Technology Admin Support		2022	607000	141100	501035	71,326.37
CS	Information Technology Admin Support		2022	607000	141100	501080	148,943.56
CS	Information Technology Admin Support		2022	607000	141100	501090	326.40
CS	Information Technology Admin Support		2022	607000	141100	501100	162,202.00
CS	Information Technology Admin Support		2022	607000	141100	501105	52,490.04
CS	Information Technology Admin Support		2022	607000	141100	501115	190.08
CS	Information Technology Admin Support		2022	607000	141100	501130	1,365.81
CS	Information Technology Admin Support		2022	607000	141100	501140	885.55
CS	Information Technology Admin Support		2022	607000	141100	511000	(9.66)
CS	Information Technology Admin Support		2022	607000	141100	511010	3,613.17
CS	Information Technology Admin Support		2022	607000	141100	511040	69.65
CS	Information Technology Admin Support		2022	607000	141100	511080	37.29
CS	Information Technology Admin Support		2022	607000	141100	520040	1,743.00
CS	Information Technology Admin Support		2022	607000	141100	520060	167.95
CS	Information Technology Admin Support		2022	607000	141100	520070	264.00
CS	Information Technology Admin Support		2022	607000	141100	530360	2,631.00
CS	Information Technology Admin Support		2022	607000	141100	530380	35,500.00
CS	Information Technology Admin Support		2022	607000	141100	540050	11,421.45
CS	Information Technology Admin Support		2022	607000	141100	540242	1,835.51
CS	Information Technology Admin Support		2022	607000	141100	540640	3,884.35
CS	Information Technology Admin Support		2022	607000	141100	572200	2,103.76
CS	Information Technology Admin Support		2022	607000	141100	572210	336.56
CS	Information Technology Admin Support		2022	607000	141100	590210	2,549.71
CS	Information Technology Admin Support		2022	607000	141100	590230	16,911.74

CSP Cat.	Department	Cost Center Description	Fiscal		Cost		Actuals
			Year	Fund	Center	Acct	
CS	Information Technology	IGC - IT Security	2022	607000	143500	501010	303,680.68
CS	Information Technology	IGC - IT Security	2022	607000	143500	501035	37,472.03
CS	Information Technology	IGC - IT Security	2022	607000	143500	501080	74,796.21
CS	Information Technology	IGC - IT Security	2022	607000	143500	501090	122.40
CS	Information Technology	IGC - IT Security	2022	607000	143500	501100	55,409.00
CS	Information Technology	IGC - IT Security	2022	607000	143500	501105	26,087.07
CS	Information Technology	IGC - IT Security	2022	607000	143500	501115	71.28
CS	Information Technology	IGC - IT Security	2022	607000	143500	501130	681.25
CS	Information Technology	IGC - IT Security	2022	607000	143500	501140	450.90
CS	Information Technology	IGC - IT Security	2022	607000	143500	511360	4,995.00
CS	Information Technology	IGC - IT Security	2022	607000	143500	540050	28,440.00
CS	Information Technology	IGC - IT Security	2022	607000	143500	540190	8,217.56
CS	Information Technology	IGC - IT Security	2022	607000	143500	540200	8,341.22
CS	Information Technology	IGC - IT Security	2022	607000	143500	540242	174.69
CS	Information Technology	IGC - IT Security	2022	607000	143500	540260	316.27
CS	Information Technology	IGC - IT Security	2022	607000	143500	540271	272,239.82
CS	Information Technology	IGC - IT Security	2022	607000	143500	540640	480.00
CS	Information Technology	IGC - IT Security	2022	607000	143500	572210	13,230.19
CS	Information Technology	IGC - IT Security	2022	607000	143500	572220	93,196.90
CS	Information Technology	Fixed Assets	2022	607000	144000	572210	4,792.97
CS	Information Technology	Fixed Assets	2022	607000	144000	580080	127,610.64
CS	Information Technology	Fixed Assets	2022	607000	144000	580150	11,000.00
CS	Information Technology	IGC – Microsoft EA SW & HW l	2022	607000	144003	540271	1,064,941.72
CS	Information Technology	IGC – Microsoft EA SW & HW l	2022	607000	144003	572210	6,643.94
CS	Information Technology	IGC – Microsoft EA SW & HW l	2022	607000	144003	572220	411,716.88
CS	Information Technology	Application Services	2022	607000	145100	501010	975,402.19
CS	Information Technology	Application Services	2022	607000	145100	501020	30,166.58
CS	Information Technology	Application Services	2022	607000	145100	501035	118,678.81
CS	Information Technology	Application Services	2022	607000	145100	501080	241,792.71
CS	Information Technology	Application Services	2022	607000	145100	501090	416.70
CS	Information Technology	Application Services	2022	607000	145100	501100	265,044.59
CS	Information Technology	Application Services	2022	607000	145100	501105	83,787.76
CS	Information Technology	Application Services	2022	607000	145100	501115	243.79
CS	Information Technology	Application Services	2022	607000	145100	501130	2,264.92
CS	Information Technology	Application Services	2022	607000	145100	501140	1,397.70
CS	Information Technology	Application Services	2022	607000	145100	511010	119.87
CS	Information Technology	Application Services	2022	607000	145100	511360	733.87
CS	Information Technology	Application Services	2022	607000	145100	530060	103.25
CS	Information Technology	Application Services	2022	607000	145100	530380	5,228.56
CS	Information Technology	Application Services	2022	607000	145100	540150	1,005.00
CS	Information Technology	Application Services	2022	607000	145100	540200	86,159.10
CS	Information Technology	Application Services	2022	607000	145100	540242	1,841.36
CS	Information Technology	Application Services	2022	607000	145100	540260	48.30
CS	Information Technology	Application Services	2022	607000	145100	540271	88,886.69
CS	Information Technology	Application Services	2022	607000	145100	540640	695.00
CS	Information Technology	Application Services	2022	607000	145100	572210	1,478.41
CS	Information Technology	Application Services	2022	607000	145100	572220	4,427.50
CS	Information Technology	IGC - SAP Support Centr	2022	607000	146200	501010	1,551,702.40
CS	Information Technology	IGC - SAP Support Centr	2022	607000	146200	501020	5,881.58
CS	Information Technology	IGC - SAP Support Centr	2022	607000	146200	501035	185,602.72
CS	Information Technology	IGC - SAP Support Centr	2022	607000	146200	501080	365,651.52
CS	Information Technology	IGC - SAP Support Centr	2022	607000	146200	501090	612.79
CS	Information Technology	IGC - SAP Support Centr	2022	607000	146200	501100	380,853.57
CS	Information Technology	IGC - SAP Support Centr	2022	607000	146200	501105	125,886.36
CS	Information Technology	IGC - SAP Support Centr	2022	607000	146200	501115	359.30
CS	Information Technology	IGC - SAP Support Centr	2022	607000	146200	501130	3,389.31
CS	Information Technology	IGC - SAP Support Centr	2022	607000	146200	501140	2,190.72
CS	Information Technology	IGC - SAP Support Centr	2022	607000	146200	511040	214.93
CS	Information Technology	IGC - SAP Support Centr	2022	607000	146200	511080	702.82

CSP Cat.	Department	Cost Center Description	Fiscal		Cost		Actuals
			Year	Fund	Center	Acct	
CS	Information Technology	IGC - SAP Support Centr	2022	607000	146200	511360	672.26
CS	Information Technology	IGC - SAP Support Centr	2022	607000	146200	520040	3,694.84
CS	Information Technology	IGC - SAP Support Centr	2022	607000	146200	520050	209.16
CS	Information Technology	IGC - SAP Support Centr	2022	607000	146200	520060	2,562.42
CS	Information Technology	IGC - SAP Support Centr	2022	607000	146200	520070	816.00
CS	Information Technology	IGC - SAP Support Centr	2022	607000	146200	520080	9,800.00
CS	Information Technology	IGC - SAP Support Centr	2022	607000	146200	520090	140.69
CS	Information Technology	IGC - SAP Support Centr	2022	607000	146200	530380	1,687,792.50
CS	Information Technology	IGC - SAP Support Centr	2022	607000	146200	540040	2,050.00
CS	Information Technology	IGC - SAP Support Centr	2022	607000	146200	540050	21,326.76
CS	Information Technology	IGC - SAP Support Centr	2022	607000	146200	540190	12,650.00
CS	Information Technology	IGC - SAP Support Centr	2022	607000	146200	540200	408,192.75
CS	Information Technology	IGC - SAP Support Centr	2022	607000	146200	540242	1,933.91
CS	Information Technology	IGC - SAP Support Centr	2022	607000	146200	540271	72,213.68
CS	Information Technology	IGC - SAP Support Centr	2022	607000	146200	540640	2,685.29
CS	Information Technology	IGC - SAP Support Centr	2022	607000	146200	570210	59,333.00
CS	Information Technology	IGC - SAP Support Centr	2022	607000	146200	572200	411.96
CS	Information Technology	IGC - SAP Support Centr	2022	607000	146200	572210	53,677.17
CS	Information Technology	IGC - SAP Support Centr	2022	607000	146200	572220	53,345.00
CS	Information Technology	IGC - SAP Support Centr	2022	607000	146200	580080	352,787.87
CS	Information Technology	IGC - SAP Support Centr	2022	607000	146200	590230	5,896.72
CS	Information Technology	Projects & Procurement	2022	607000	147300	501010	766,278.62
CS	Information Technology	Projects & Procurement	2022	607000	147300	501020	295.92
CS	Information Technology	Projects & Procurement	2022	607000	147300	501035	85,134.32
CS	Information Technology	Projects & Procurement	2022	607000	147300	501080	183,091.10
CS	Information Technology	Projects & Procurement	2022	607000	147300	501090	351.53
CS	Information Technology	Projects & Procurement	2022	607000	147300	501100	221,454.62
CS	Information Technology	Projects & Procurement	2022	607000	147300	501105	64,252.51
CS	Information Technology	Projects & Procurement	2022	607000	147300	501115	205.34
CS	Information Technology	Projects & Procurement	2022	607000	147300	501130	1,700.01
CS	Information Technology	Projects & Procurement	2022	607000	147300	501140	1,129.55
CS	Information Technology	Projects & Procurement	2022	607000	147300	511050	31,738.62
CS	Information Technology	Projects & Procurement	2022	607000	147300	520040	626.00
CS	Information Technology	Projects & Procurement	2022	607000	147300	520050	173.95
CS	Information Technology	Projects & Procurement	2022	607000	147300	520060	515.55
CS	Information Technology	Projects & Procurement	2022	607000	147300	520070	264.00
CS	Information Technology	Projects & Procurement	2022	607000	147300	520080	2,198.00
CS	Information Technology	Projects & Procurement	2022	607000	147300	540040	1,212.00
CS	Information Technology	Projects & Procurement	2022	607000	147300	540050	6,985.00
CS	Information Technology	Projects & Procurement	2022	607000	147300	540242	1,190.04
CS	Information Technology	Projects & Procurement	2022	607000	147300	540271	1,065.06
CS	Information Technology	Desktop Services	2022	607000	148100	501010	796,386.16
CS	Information Technology	Desktop Services	2022	607000	148100	501020	2,342.35
CS	Information Technology	Desktop Services	2022	607000	148100	501035	93,182.15
CS	Information Technology	Desktop Services	2022	607000	148100	501080	192,672.53
CS	Information Technology	Desktop Services	2022	607000	148100	501090	394.34
CS	Information Technology	Desktop Services	2022	607000	148100	501100	241,875.20
CS	Information Technology	Desktop Services	2022	607000	148100	501105	65,419.82
CS	Information Technology	Desktop Services	2022	607000	148100	501115	228.69
CS	Information Technology	Desktop Services	2022	607000	148100	501130	1,766.19
CS	Information Technology	Desktop Services	2022	607000	148100	501140	1,162.97
CS	Information Technology	Desktop Services	2022	607000	148100	511330	225.15
CS	Information Technology	Desktop Services	2022	607000	148100	511360	3,878.43
CS	Information Technology	Desktop Services	2022	607000	148100	530380	350,936.05
CS	Information Technology	Desktop Services	2022	607000	148100	540170	34,080.10
CS	Information Technology	Desktop Services	2022	607000	148100	540200	39,980.84
CS	Information Technology	Desktop Services	2022	607000	148100	540242	1,363.93
CS	Information Technology	Desktop Services	2022	607000	148100	540260	749.95
CS	Information Technology	Desktop Services	2022	607000	148100	540271	23,094.32

CSP Cat.	Department	Cost Center Description	Fiscal Year	Fund	Cost Center	Acct	Actuals
CS	Information Technology	Desktop Services	2022	607000	148100	540300	3,288.00
CS	Information Technology	Desktop Services	2022	607000	148100	570210	6,094.50
CS	Information Technology	Desktop Services	2022	607000	148100	572210	55,950.45
CS	Information Technology	Desktop Services	2022	607000	148100	572220	106,681.34
CS	Information Technology	Desktop Services	2022	607000	148100	590210	8,334.16
CS	Information Technology	Network Services	2022	607000	148200	501010	1,103,196.88
CS	Information Technology	Network Services	2022	607000	148200	501020	40,682.67
CS	Information Technology	Network Services	2022	607000	148200	501035	126,472.46
CS	Information Technology	Network Services	2022	607000	148200	501080	270,722.77
CS	Information Technology	Network Services	2022	607000	148200	501090	471.32
CS	Information Technology	Network Services	2022	607000	148200	501100	271,365.64
CS	Information Technology	Network Services	2022	607000	148200	501105	95,418.69
CS	Information Technology	Network Services	2022	607000	148200	501115	275.22
CS	Information Technology	Network Services	2022	607000	148200	501130	2,518.71
CS	Information Technology	Network Services	2022	607000	148200	501140	1,566.83
CS	Information Technology	Network Services	2022	607000	148200	511010	217.99
CS	Information Technology	Network Services	2022	607000	148200	511200	2,291.27
CS	Information Technology	Network Services	2022	607000	148200	511330	2,415.56
CS	Information Technology	Network Services	2022	607000	148200	511360	71,408.41
CS	Information Technology	Network Services	2022	607000	148200	530380	259,176.77
CS	Information Technology	Network Services	2022	607000	148200	540050	41,587.85
CS	Information Technology	Network Services	2022	607000	148200	540150	985.00
CS	Information Technology	Network Services	2022	607000	148200	540170	378,984.61
CS	Information Technology	Network Services	2022	607000	148200	540180	61.18
CS	Information Technology	Network Services	2022	607000	148200	540190	344,792.23
CS	Information Technology	Network Services	2022	607000	148200	540200	408,495.66
CS	Information Technology	Network Services	2022	607000	148200	540201	176,740.56
CS	Information Technology	Network Services	2022	607000	148200	540242	2,067.85
CS	Information Technology	Network Services	2022	607000	148200	540260	163,139.20
CS	Information Technology	Network Services	2022	607000	148200	540271	237,632.78
CS	Information Technology	Network Services	2022	607000	148200	540300	9,852.00
CS	Information Technology	Network Services	2022	607000	148200	540640	10,112.06
CS	Information Technology	Network Services	2022	607000	148200	570220	16,636.72
CS	Information Technology	Network Services	2022	607000	148200	572200	1,583.29
CS	Information Technology	Network Services	2022	607000	148200	572210	860,804.94
CS	Information Technology	Network Services	2022	607000	148200	572220	312,962.84
CS	Information Technology	Network Services	2022	607000	148200	590210	20,189.00
CS	Information Technology	Technology Services	2022	607000	148300	530380	128,061.50
CS	Information Technology	Technology Services	2022	607000	148300	540170	23,813.33
CS	Information Technology	Technology Services	2022	607000	148300	540190	90,545.89
CS	Information Technology	Technology Services	2022	607000	148300	540200	447,261.31
CS	Information Technology	Technology Services	2022	607000	148300	540260	121,929.24
CS	Information Technology	Technology Services	2022	607000	148300	540271	18,446.00
CS	Information Technology	Technology Services	2022	607000	148300	572210	80,574.39
CS	Information Technology	Technology Services	2022	607000	148300	572999	139,173.94
							68,744,461.66

CSP Cat.	Department	Cost Center Description	Fiscal		Cost		Actuals
			Year	Fund	Center	Acct	
CS	Assembly	Clerk-Agenda Control	2022	101000	102003	605530	13.58
CS	Assembly	Clerk-Agenda Control	2022	101000	102003	605540	423.02
CS	Assembly	Clerk-Liquor License	2022	101000	102007	605530	4.68
CS	Assembly	Clerk-Liquor License	2022	101000	102007	605540	141.41
CS	Assembly	Ombudsman	2022	101000	103000	600900	38,614.77
CS	Assembly	Ombudsman	2022	101000	103000	601150	3,120.22
CS	Assembly	Ombudsman	2022	101000	103000	605530	20.70
CS	Assembly	Ombudsman	2022	101000	103000	605540	929.73
CS	Internal Audit	Internal Audit	2022	101000	106000	600900	75,888.75
CS	Internal Audit	Internal Audit	2022	101000	106000	601150	6,132.14
CS	Internal Audit	Internal Audit	2022	101000	106000	605530	46.43
CS	Internal Audit	Internal Audit	2022	101000	106000	605540	1,383.56
CS	Equity & Justice	Equity & Justice	2022	101000	107000	605530	12.10
CS	Equity & Justice	Equity & Justice	2022	101000	107000	605540	361.55
CS	Mayor	Mayor	2022	101000	111100	600900	166,679.45
CS	Mayor	Mayor	2022	101000	111100	601150	13,468.43
CS	Mayor	Mayor	2022	101000	111100	601900	1,866.72
CS	Mayor	Mayor	2022	101000	111100	605530	154.03
CS	Mayor	Mayor	2022	101000	111100	605540	2,110.50
CS	Equity & Justice	Office of Equal Opportunity	2022	101000	113200	600900	28,386.47
CS	Equity & Justice	Office of Equal Opportunity	2022	101000	113200	601150	2,293.74
CS	Equity & Justice	Office of Equal Opportunity	2022	101000	113200	605530	11.47
CS	Equity & Justice	Office of Equal Opportunity	2022	101000	113200	605540	384.25
CS	Equity & Justice	IGC-OEO-Equal Employment O	2022	101000	113271	600130	77,186.25
CS	Equity & Justice	IGC-OEO-Contract DBE	2022	101000	113273	600130	115,779.38
CS	Municipal Attorney	Civil Law	2022	101000	115100	600190	70,178.21
CS	Municipal Attorney	Civil Law	2022	101000	115100	600900	265,553.22
CS	Municipal Attorney	Civil Law	2022	101000	115100	601150	21,457.86
CS	Municipal Attorney	Civil Law	2022	101000	115100	605530	137.31
CS	Municipal Attorney	Civil Law	2022	101000	115100	605540	8,687.02
CS	Municipal Attorney	Criminal	2022	101000	115200	600190	18,714.20
CS	Municipal Attorney	Criminal	2022	101000	115200	600430	2,092.30
CS	Municipal Attorney	Criminal	2022	101000	115200	600480	18,868.52
CS	Municipal Attorney	Criminal	2022	101000	115200	600900	389,174.14
CS	Municipal Attorney	Criminal	2022	101000	115200	601150	31,446.96
CS	Municipal Attorney	Criminal	2022	101000	115200	605530	188.56
CS	Municipal Attorney	Criminal	2022	101000	115200	605540	12,002.70
CS	Municipal Attorney	Administrative Hearing	2022	101000	115300	600190	4,678.56
CS	Municipal Attorney	Administrative Hearing	2022	101000	115300	600900	20,456.65
CS	Municipal Attorney	Administrative Hearing	2022	101000	115300	601150	1,652.97
CS	Municipal Attorney	Administrative Hearing	2022	101000	115300	605530	20.85
CS	Municipal Attorney	Administrative Hearing	2022	101000	115300	605540	1,324.28
CS	Municipal Attorney	Muni Attorney Administration	2022	101000	115400	600440	467.21
CS	Municipal Attorney	Muni Attorney Administration	2022	101000	115400	600450	17,186.24
CS	Municipal Attorney	Muni Attorney Administration	2022	101000	115400	600900	17,047.18
CS	Municipal Attorney	Muni Attorney Administration	2022	101000	115400	601150	1,377.48
CS	Municipal Attorney	Muni Attorney Administration	2022	101000	115400	605530	17.97
CS	Municipal Attorney	Muni Attorney Administration	2022	101000	115400	605540	1,143.94
CS	Municipal Manager	Muni Manager Admin	2022	101000	121000	600900	60,450.51
CS	Municipal Manager	Muni Manager Admin	2022	101000	121000	601150	4,884.69
CS	Municipal Manager	Muni Manager Admin	2022	101000	121000	605530	124.53
CS	Municipal Manager	Muni Manager Admin	2022	101000	121000	605540	6,067.27
CS	Municipal Manager	Muni Manager Deputy Director	2022	101000	121010	605530	13.01
CS	Municipal Manager	Muni Manager Deputy Director	2022	101000	121010	605540	1,948.73
CS	Municipal Manager	Office of Emergency Managem	2022	101000	124200	601050	98,219.43
CS	Municipal Manager	Office of Emergency Managem	2022	101000	124200	601900	2,191.92
CS	Municipal Manager	Office of Emergency Managem	2022	101000	124200	605023	3,439.00
CS	Municipal Manager	Office of Emergency Managem	2022	101000	124200	605530	22.34
CS	Municipal Manager	Office of Emergency Managem	2022	101000	124200	605540	3,544.33

CSP Cat.	Department	Cost Center Description	Fiscal		Cost		Actuals
			Year	Fund	Center	Acct	
CS	Municipal Manager	Risk Management	2022	101000	124700	600030	497.56
CS	Municipal Manager	Risk Management	2022	101000	124700	600050	3,653.02
CS	Municipal Manager	Risk Management	2022	101000	124700	600060	589.08
CS	Municipal Manager	Risk Management	2022	101000	124700	600080	1,162.47
CS	Municipal Manager	Risk Management	2022	101000	124700	600090	972.80
CS	Municipal Manager	Risk Management	2022	101000	124700	600140	58.67
CS	Municipal Manager	Risk Management	2022	101000	124700	600150	1,345.61
CS	Municipal Manager	Risk Management	2022	101000	124700	600160	661,747.28
CS	Municipal Manager	Risk Management	2022	101000	124700	600220	621.14
CS	Municipal Manager	Risk Management	2022	101000	124700	600240	4,641.57
CS	Municipal Manager	Risk Management	2022	101000	124700	600250	30.99
CS	Municipal Manager	Risk Management	2022	101000	124700	600280	997.00
CS	Municipal Manager	Risk Management	2022	101000	124700	600290	1,767.33
CS	Municipal Manager	Risk Management	2022	101000	124700	600320	606.68
CS	Municipal Manager	Risk Management	2022	101000	124700	600330	267.72
CS	Municipal Manager	Risk Management	2022	101000	124700	600360	1,292.76
CS	Municipal Manager	Risk Management	2022	101000	124700	600370	11.65
CS	Municipal Manager	Risk Management	2022	101000	124700	600540	2,397.01
CS	Municipal Manager	Risk Management	2022	101000	124700	600570	392.72
CS	Municipal Manager	Risk Management	2022	101000	124700	600580	1,706.09
CS	Municipal Manager	Risk Management	2022	101000	124700	600610	1,028.17
CS	Municipal Manager	Risk Management	2022	101000	124700	600900	93,931.98
CS	Municipal Manager	Risk Management	2022	101000	124700	601150	7,590.12
CS	Municipal Manager	Risk Management	2022	101000	124700	601840	206.12
CS	Municipal Manager	Risk Management	2022	101000	124700	601850	625.20
CS	Municipal Manager	Risk Management	2022	101000	124700	601880	5,415.96
CS	Municipal Manager	Risk Management	2022	101000	124700	601890	8,085.66
CS	Municipal Manager	Risk Management	2022	101000	124700	601910	410.00
CS	Municipal Manager	Risk Management	2022	101000	124700	601930	139.07
CS	Municipal Manager	Risk Management	2022	101000	124700	605530	18.20
CS	Municipal Manager	Risk Management	2022	101000	124700	605540	2,840.96
CS	Municipal Manager	Safety	2022	101000	124900	600030	250.46
CS	Municipal Manager	Safety	2022	101000	124900	600060	296.55
CS	Municipal Manager	Safety	2022	101000	124900	600080	585.17
CS	Municipal Manager	Safety	2022	101000	124900	600090	489.68
CS	Municipal Manager	Safety	2022	101000	124900	600140	29.33
CS	Municipal Manager	Safety	2022	101000	124900	600150	672.82
CS	Municipal Manager	Safety	2022	101000	124900	600220	312.69
CS	Municipal Manager	Safety	2022	101000	124900	600240	118.28
CS	Municipal Manager	Safety	2022	101000	124900	600280	498.49
CS	Municipal Manager	Safety	2022	101000	124900	600290	883.67
CS	Municipal Manager	Safety	2022	101000	124900	600320	333.81
CS	Municipal Manager	Safety	2022	101000	124900	600330	134.75
CS	Municipal Manager	Safety	2022	101000	124900	600360	560.21
CS	Municipal Manager	Safety	2022	101000	124900	600370	34.97
CS	Municipal Manager	Safety	2022	101000	124900	600540	1,198.50
CS	Municipal Manager	Safety	2022	101000	124900	600570	196.38
CS	Municipal Manager	Safety	2022	101000	124900	600580	853.03
CS	Municipal Manager	Safety	2022	101000	124900	600610	517.56
CS	Municipal Manager	Safety	2022	101000	124900	601840	103.06
CS	Municipal Manager	Safety	2022	101000	124900	601850	312.60
CS	Municipal Manager	Safety	2022	101000	124900	601880	2,903.16
CS	Municipal Manager	Safety	2022	101000	124900	601890	4,334.26
CS	Municipal Manager	Safety	2022	101000	124900	601910	204.99
CS	Municipal Manager	Safety	2022	101000	124900	601930	69.53
CS	Municipal Manager	Safety	2022	101000	124900	605530	9.96
CS	Municipal Manager	Safety	2022	101000	124900	605540	1,544.12
CS	Finance	Controller Administration	2022	101000	132100	600900	19,460.64
CS	Finance	Controller Administration	2022	101000	132100	601150	1,572.50

CSP Cat.	Department	Cost Center Description	Fiscal		Cost		Actuals
			Year	Fund	Center	Acct	
CS	Finance	Controller Administration	2022	101000	132100	605530	815.24
CS	Finance	Controller Administration	2022	101000	132100	605540	1,636.71
CS	Finance	Central Accounting	2022	101000	132200	600340	194,419.79
CS	Finance	Central Accounting	2022	101000	132200	600900	193,878.35
CS	Finance	Central Accounting	2022	101000	132200	601150	15,666.24
CS	Finance	Central Accounting	2022	101000	132200	605530	127.52
CS	Finance	Central Accounting	2022	101000	132200	605540	7,952.31
CS	Human Resources	Payroll	2022	101000	132300	600480	14,699.89
CS	Human Resources	Payroll	2022	101000	132300	600900	65,890.31
CS	Human Resources	Payroll	2022	101000	132300	601150	5,324.22
CS	Human Resources	Payroll	2022	101000	132300	605530	80.50
CS	Human Resources	Payroll	2022	101000	132300	605540	3,465.02
CS	Finance	Accounts Payable	2022	101000	132400	600340	64,806.60
CS	Finance	Accounts Payable	2022	101000	132400	600480	30,423.63
CS	Finance	Accounts Payable	2022	101000	132400	600900	28,577.99
CS	Finance	Accounts Payable	2022	101000	132400	601150	2,309.23
CS	Finance	Accounts Payable	2022	101000	132400	605530	15.31
CS	Finance	Accounts Payable	2022	101000	132400	605540	958.58
CS	Finance	Treasury Administration	2022	101000	134100	600900	42,867.00
CS	Finance	Treasury Administration	2022	101000	134100	601150	3,463.83
CS	Finance	Treasury Administration	2022	101000	134100	605530	24.51
CS	Finance	Treasury Administration	2022	101000	134100	605540	1,532.65
CS	Finance	Revenue Management	2022	101000	134200	600390	196,037.89
CS	Finance	Revenue Management	2022	101000	134200	600900	158,787.93
CS	Finance	Revenue Management	2022	101000	134200	601150	12,830.76
CS	Finance	Revenue Management	2022	101000	134200	605530	116.78
CS	Finance	Revenue Management	2022	101000	134200	605540	6,525.83
CS	Finance	IGC-Rev Mgmt-E911	2022	101000	134271	600400	13,768.93
CS	Finance	IGC-Rev Mgmt-PSAR Billing	2022	101000	134272	600400	176,507.42
CS	Finance	IGC-Rev Mgmt-Cash Receipts	2022	101000	134273	600400	232,578.40
CS	Finance	IGC-Rev Mgmt-In-House Collec	2022	101000	134274	600400	29,196.73
CS	Finance	IGC-Rev Mgmt-DCF	2022	101000	134275	600400	429,656.28
CS	Finance	IGC-Exter Collect Agncy Recov	2022	101000	134276	600400	35,998.22
CS	Finance	Tax Billing	2022	101000	134600	600390	69,189.83
CS	Finance	Tax Billing	2022	101000	134600	600900	50,183.87
CS	Finance	Tax Billing	2022	101000	134600	601150	4,055.07
CS	Finance	Tax Billing	2022	101000	134600	605530	31.21
CS	Finance	Tax Billing	2022	101000	134600	605540	1,935.38
CS	Finance	IGC-Tax Billing Utilities	2022	101000	134671	600470	74,157.65
CS	Finance	Remittance Processing	2022	101000	134700	600390	23,063.26
CS	Finance	Remittance Processing	2022	101000	134700	600900	50,145.56
CS	Finance	Remittance Processing	2022	101000	134700	601150	4,051.97
CS	Finance	Remittance Processing	2022	101000	134700	605530	11.67
CS	Finance	Remittance Processing	2022	101000	134700	605540	735.61
CS	Finance	IGC-Remittance Processing	2022	101000	134771	600510	212,971.20
CS	Chief Fiscal Officer	Chief Fiscal Officer	2022	101000	137000	605530	682.55
CS	Chief Fiscal Officer	Chief Fiscal Officer	2022	101000	137000	605540	1,319.45
CS	Purchasing	Purchasing Services	2022	101000	138100	600900	175,643.60
CS	Purchasing	Purchasing Services	2022	101000	138100	601150	14,192.75
CS	Purchasing	Purchasing Services	2022	101000	138100	605530	106.73
CS	Purchasing	Purchasing Services	2022	101000	138100	605540	2,935.02
CS	Management & Budget	Management & Budget	2022	101000	139100	600900	101,325.47
CS	Management & Budget	Management & Budget	2022	101000	139100	601150	8,187.52
CS	Management & Budget	Management & Budget	2022	101000	139100	605530	50.46
CS	Management & Budget	Management & Budget	2022	101000	139100	605540	1,507.36
CS	Information Technology	Reprographics	2022	101000	142300	600260	113,831.55
CS	Information Technology	Reprographics	2022	101000	142300	600900	129,788.55
CS	Information Technology	Reprographics	2022	101000	142300	601150	10,487.48
CS	Information Technology	Reprographics	2022	101000	142300	605530	28.71

CSP Cat.	Department	Cost Center Description	Fiscal		Cost		Actuals
			Year	Fund	Center	Acct	
CS	Information Technology	Reprographics	2022	101000	142300	605540	863.92
CS	Information Technology	IGC-Repro	2022	101000	142371	600230	759,147.41
CS	Information Technology	Records Management	2022	101000	142400	600260	45,532.61
CS	Information Technology	Records Management	2022	101000	142400	605530	10.74
CS	Information Technology	Records Management	2022	101000	142400	605540	322.32
CS	Human Resources	Employee Relations Admin	2022	101000	181000	600900	55,317.21
CS	Human Resources	Employee Relations Admin	2022	101000	181000	601150	4,469.87
CS	Human Resources	Employee Relations Admin	2022	101000	181000	605530	5,032.90
CS	Human Resources	Employee Relations Admin	2022	101000	181000	605540	1,463.02
CS	Human Resources	Labor Relations	2022	101000	184100	600620	182,622.52
CS	Human Resources	Labor Relations	2022	101000	184100	605530	13,415.20
CS	Human Resources	Labor Relations	2022	101000	184100	605540	2,829.82
CS	Human Resources	Employment	2022	101000	184500	600620	365,245.11
CS	Human Resources	Employment	2022	101000	184500	600900	115,422.91
CS	Human Resources	Employment	2022	101000	184500	601150	9,326.67
CS	Human Resources	Employment	2022	101000	184500	605530	24,187.30
CS	Human Resources	Employment	2022	101000	184500	605540	4,616.75
CS	Human Resources	Benefits	2022	101000	187100	600620	65,222.34
CS	Human Resources	Benefits	2022	101000	187100	600900	86,461.86
CS	Human Resources	Benefits	2022	101000	187100	601150	6,986.47
CS	Human Resources	Benefits	2022	101000	187100	605530	9,425.60
CS	Human Resources	Benefits	2022	101000	187100	605540	1,205.59
CS	Community Development	OECD Admin	2022	101000	510500	600050	1,905.92
CS	Community Development	OECD Admin	2022	101000	510500	600160	64,277.13
CS	Community Development	OECD Admin	2022	101000	510500	600200	7,757.57
CS	Community Development	OECD Admin	2022	101000	510500	600240	81.32
CS	Community Development	OECD Admin	2022	101000	510500	600320	1,023.93
CS	Community Development	OECD Admin	2022	101000	510500	600360	3,770.55
CS	Community Development	OECD Admin	2022	101000	510500	600370	1,480.50
CS	Community Development	OECD Admin	2022	101000	510500	601580	7,070.05
CS	Community Development	OECD Admin	2022	101000	510500	601590	5,302.24
CS	Community Development	OECD Admin	2022	101000	510500	601880	1,489.20
CS	Community Development	OECD Admin	2022	101000	510500	601890	2,223.26
CS	Community Development	OECD Admin	2022	101000	510500	601900	466.68
CS	Community Development	OECD Admin	2022	101000	510500	605530	8,540.59
CS	Community Development	OECD Admin	2022	101000	510500	605540	1,485.68
CS	Community Development	OECD Data & Analytics	2022	101000	510600	605530	21,070.04
CS	Community Development	OECD Data & Analytics	2022	101000	510600	605540	3,573.46
CS	Community Development	IGC-OECD GIS Licensing	2022	101000	510671	600110	324,999.96
CS	Community Development	IGC-OECD GIS Enterprise Prog	2022	101000	510672	600110	515,979.13
CS	Community Development	IGC-OECD GIS Dept Support	2022	101000	510673	600110	144,000.00
CS	Maintenance & Operation	Facility Maintenance	2022	101000	710500	601330	722,972.59
CS	Maintenance & Operation	Facility Maintenance	2022	101000	710500	605023	10,740.00
CS	Maintenance & Operation	Facility Maintenance	2022	101000	710500	605530	17,552.79
CS	Maintenance & Operation	Facility Maintenance	2022	101000	710500	605540	93,238.51
CS	Maintenance & Operation	Facilities-Girdwood	2022	101000	710503	601000	15,060.37
CS	Maintenance & Operation	Facilities-Eagle River Town Cen	2022	101000	710506	601000	75,136.92
CS	Maintenance & Operation	Facilities-Fire Stations	2022	101000	710509	601000	1,078,729.81
CS	Maintenance & Operation	Facilities-Libraries	2022	101000	710512	601000	1,413,012.24
CS	Maintenance & Operation	Facilities-Fac Maint Whse	2022	101000	710515	601000	132,417.16
CS	Maintenance & Operation	Facilities-Traffic	2022	101000	710518	601000	3,130.28
CS	Maintenance & Operation	Facilities-RES/Historical Propert	2022	101000	710521	601000	25,776.49
CS	Maintenance & Operation	Facilities-Areawide Parks & Rec	2022	101000	710524	601000	314,232.36
CS	Maintenance & Operation	Facilities-Health and Human Se	2022	101000	710527	601000	589,009.24
CS	Maintenance & Operation	Facilities-ARDSA	2022	101000	710530	601000	20,501.72
CS	Maintenance & Operation	Facilities-Transit/Centers/Park &	2022	101000	710533	601000	844,778.63
CS	Maintenance & Operation	Facilities-Fleet Maint	2022	101000	710536	601000	179,849.29
CS	Maintenance & Operation	Facilities-Police / Substations	2022	101000	710539	601000	791,821.04
CS	Maintenance & Operation	Facilities-Eagle River Parks & R	2022	101000	710542	601000	3,002.95

CSP Cat.	Department	Cost Center Description	Fiscal		Cost		Actuals
			Year	Fund	Center	Acct	
CS	Maintenance & Operation Facilities-City Hall		2022	101000	710545	601000	150,191.38
CS	Maintenance & Operation Facilities-Eagle River Parks & R		2022	101000	710548	601000	97.70
CS	Maintenance & Operation Facilities-Eagle River Parks & R		2022	101000	710551	601000	4,342.66
CS	Maintenance & Operation Facilities-Areawide Parks & Rec		2022	101000	710554	601000	62,108.94
CS	Maintenance & Operation Facilities-Heritage Land Bank		2022	101000	710557	601000	12,370.54
CS	Maintenance & Operation Facilities-Chugiak Fire Service /		2022	101000	710560	601000	14,380.53
CS	Maintenance & Operation Facilities-CBERRSA		2022	101000	710562	601000	19.23
CS	Maintenance & Operation Facilities-Permit Center		2022	101000	710583	601000	0.86
CS	Maintenance & Operation Facility Capital Improvements		2022	101000	710800	605530	1,130.32
CS	Maintenance & Operation Facility Capital Improvements		2022	101000	710800	605540	6,027.51
CS	Information Technology Admin Support		2022	607000	141100	600900	361,975.23
CS	Information Technology Admin Support		2022	607000	141100	600970	81,053.90
CS	Information Technology Admin Support		2022	607000	141100	601130	120,713.36
CS	Information Technology Admin Support		2022	607000	141100	601150	29,249.17
CS	Information Technology Admin Support		2022	607000	141100	601680	0.01
CS	Information Technology Admin Support		2022	607000	141100	605530	68.33
CS	Information Technology Admin Support		2022	607000	141100	605540	2,045.24
CS	Information Technology IGC - IT Security		2022	607000	143500	600260	68,298.91
CS	Information Technology IGC - IT Security		2022	607000	143500	605530	33.91
CS	Information Technology IGC - IT Security		2022	607000	143500	605540	1,016.77
CS	Information Technology IGC - IT Security - All		2022	607000	143571	601870	269,393.06
CS	Information Technology IGC - IT Security - No AWWU		2022	607000	143572	601870	728,359.00
CS	Information Technology Application Services		2022	607000	145100	600260	295,962.01
CS	Information Technology Application Services		2022	607000	145100	601900	1,772.04
CS	Information Technology Application Services		2022	607000	145100	605530	116.96
CS	Information Technology Application Services		2022	607000	145100	605540	3,494.86
CS	Information Technology IGC - SAP Support Centr		2022	607000	146200	600260	409,793.56
CS	Information Technology IGC - SAP Support Centr		2022	607000	146200	600900	194,950.98
CS	Information Technology IGC - SAP Support Centr		2022	607000	146200	601150	15,752.88
CS	Information Technology IGC - SAP Support Centr		2022	607000	146200	605530	170.05
CS	Information Technology IGC - SAP Support Centr		2022	607000	146200	605540	5,078.99
CS	Information Technology Projects & Procurement		2022	607000	147300	600260	204,896.77
CS	Information Technology Projects & Procurement		2022	607000	147300	605530	325.31
CS	Information Technology Projects & Procurement		2022	607000	147300	605540	2,672.09
CS	Information Technology Desktop Services		2022	607000	148100	600260	250,429.40
CS	Information Technology Desktop Services		2022	607000	148100	605530	88.37
CS	Information Technology Desktop Services		2022	607000	148100	605540	2,641.76
CS	Information Technology Network Services		2022	607000	148200	600260	364,260.98
CS	Information Technology Network Services		2022	607000	148200	605530	125.92
CS	Information Technology Network Services		2022	607000	148200	605540	3,762.79
CS	Information Technology IGC - Netwk Svcs - Servers		2022	607000	148271	600100	2,995,955.17
CS	Information Technology IGC - Netwk Svcs - Network		2022	607000	148272	600100	2,075,326.02
CS	Information Technology IGC - Netwk Svcs - Phones		2022	607000	148273	600100	515,060.70
							<u>23,947,387.17</u>

CSP Cat.	Department	Cost Center Description	Fiscal		Cost		Actuals
			Year	Fund	Center	Acct	
CS	Municipal Attorney	Civil Law	2022	101000	115100	540030	3,855.60
CS	Municipal Attorney	Civil Law	2022	101000	115100	600190	70,178.21
CS	Municipal Attorney	Criminal	2022	101000	115200	540030	102,506.93
CS	Municipal Attorney	Criminal	2022	101000	115200	600190	18,714.20
CS	Municipal Attorney	Administrative Hearing	2022	101000	115300	600190	4,678.56
CS	Real Estate	Leases-City Hall	2022	101000	122302	580530	198,955.00
CS	Real Estate	Leases-ERTC	2022	101000	122303	580530	120,000.00
CS	Municipal Manager	Office of Emergency Management	2022	101000	124200	580010	454,636.12
CS	Municipal Manager	Office of Emergency Management	2022	101000	124200	580020	79,811.92
CS	Municipal Manager	Office of Emergency Management	2022	101000	124200	580030	3.07
CS	Municipal Manager	Office of Emergency Management	2022	101000	124200	580530	6,872.00
CS	Municipal Manager	Risk Management	2022	101000	124700	600080	1,162.47
CS	Municipal Manager	Risk Management	2022	101000	124700	600160	661,747.28
CS	Municipal Manager	Safety	2022	101000	124900	600080	585.17
CS	Finance	Revenue Management	2022	101000	134200	540030	22.00
CS	Information Technology	Reprographics	2022	101000	142300	570200	19,670.00
CS	Community Development	OECD Admin	2022	101000	510500	600160	64,277.13
CS	Community Development	OECD Data & Analytics	2022	101000	510600	570210	9,489.58
CS	Maintenance & Operation	Facility Maintenance	2022	101000	710500	580530	675,963.00
CS	Maintenance & Operation	Facility Capital Improvements	2022	101000	710800	580010	361,712.12
CS	Maintenance & Operation	Facility Capital Improvements	2022	101000	710800	580020	260,036.75
CS	Maintenance & Operation	Facility Capital Improvements	2022	101000	710800	580030	2.42
CS	Information Technology	Fixed Assets	2022	607000	144000	580080	127,610.64
CS	Information Technology	Fixed Assets	2022	607000	144000	580150	11,000.00
CS	Information Technology	Application Services	2022	607000	145100	540150	1,005.00
CS	Information Technology	IGC - SAP Support Centr	2022	607000	146200	570210	59,333.00
CS	Information Technology	IGC - SAP Support Centr	2022	607000	146200	580080	352,787.87
CS	Information Technology	Desktop Services	2022	607000	148100	570210	6,094.50
CS	Information Technology	Network Services	2022	607000	148200	540150	985.00
CS	Information Technology	Network Services	2022	607000	148200	570220	16,636.72
							3,690,332.26

CSP Cat.	Department	Cost Center Description	Fiscal		Cost		Actuals
			Year	Fund	Center	Acct	
CS	Assembly	Clerk-Agenda Control	2022	101000	102003	600020	(235,594.70)
CS	Assembly	Clerk-Municipal Audit	2022	101000	102006	600030	(528,250.00)
CS	Assembly	Clerk-Liquor License	2022	101000	102007	600040	(77,761.02)
CS	Assembly	Ombudsman	2022	101000	103000	600050	(366,065.14)
CS	Internal Audit	Internal Audit	2022	101000	106000	430030	(105,560.27)
CS	Internal Audit	Internal Audit	2022	101000	106000	600060	(711,095.01)
CS	Equity & Justice	Equity & Justice	2022	101000	107000	601930	(182,939.37)
CS	Mayor	Mayor	2022	101000	111100	406580	(40.00)
CS	Mayor	Mayor	2022	101000	111100	406625	(172.00)
CS	Mayor	Mayor	2022	101000	111100	408380	(17,932.14)
CS	Mayor	Mayor	2022	101000	111100	600080	(1,403,875.11)
CS	Equity & Justice	Office of Equal Opportunity	2022	101000	113200	600130	(192,965.63)
CS	Equity & Justice	IGC-OEO-Equal Employment O	2022	101000	113271	600140	(77,186.25)
CS	Equity & Justice	IGC-OEO-Contract DBE	2022	101000	113273	601820	(115,779.38)
CS	Municipal Attorney	Civil Law	2022	101000	115100	406625	(2,619.00)
CS	Municipal Attorney	Civil Law	2022	101000	115100	408580	(750.00)
CS	Municipal Attorney	Civil Law	2022	101000	115100	600160	(2,529,541.23)
CS	Municipal Attorney	Criminal	2022	101000	115200	406490	(453,668.02)
CS	Municipal Attorney	Criminal	2022	101000	115200	406625	(2,106.75)
CS	Municipal Attorney	Criminal	2022	101000	115200	407060	(58,187.50)
CS	Municipal Attorney	Criminal	2022	101000	115200	600170	(3,122,095.55)
CS	Municipal Attorney	Administrative Hearing	2022	101000	115300	407050	(381.67)
CS	Municipal Attorney	Administrative Hearing	2022	101000	115300	600180	(331,553.94)
CS	Municipal Attorney	Muni Attorney Administration	2022	101000	115400	406625	6,133.28
CS	Municipal Attorney	Muni Attorney Administration	2022	101000	115400	600190	(294,748.48)
CS	Municipal Manager	Muni Manager Admin	2022	101000	121000	406540	(400.00)
CS	Municipal Manager	Muni Manager Admin	2022	101000	121000	600220	(748,669.62)
CS	Municipal Manager	Muni Manager Deputy Director	2022	101000	121010	601960	(197,153.42)
CS	Real Estate	Leases-Parking Garage	2022	101000	122301	600890	(91,980.00)
CS	Real Estate	Leases-City Hall	2022	101000	122302	600900	(4,016,856.24)
CS	Real Estate	Leases-ERTC	2022	101000	122303	600910	(365,283.27)
CS	Real Estate	Leases-Libraries	2022	101000	122304	600920	(228,607.05)
CS	Real Estate	Leases-Traffic	2022	101000	122306	600940	(48,000.00)
CS	Real Estate	Leases-Recreation	2022	101000	122307	600950	(378,158.07)
CS	Real Estate	Leases-Permit Center	2022	101000	122309	600970	(2,096,779.98)
CS	Real Estate	Leases-Police	2022	101000	122310	600980	(37,997.32)
CS	Municipal Manager	Office of Emergency Management	2022	101000	124200	408550	102.85
CS	Municipal Manager	Office of Emergency Management	2022	101000	124200	600090	(1,047,815.73)
CS	Municipal Manager	Risk Management	2022	101000	124700	406625	(38,916.23)
CS	Municipal Manager	Risk Management	2022	101000	124700	600600	(1,060,495.95)
CS	Municipal Manager	Safety	2022	101000	124900	600500	(192,180.38)
CS	Finance	Controller Administration	2022	101000	132100	600340	(259,226.39)
CS	Finance	Central Accounting	2022	101000	132200	406625	(9,042.28)
CS	Finance	Central Accounting	2022	101000	132200	408550	89.85
CS	Finance	Central Accounting	2022	101000	132200	600350	(2,280,673.18)
CS	Human Resources	Payroll	2022	101000	132300	406621	(3,202.50)
CS	Human Resources	Payroll	2022	101000	132300	600360	(1,315,322.08)
CS	Finance	Accounts Payable	2022	101000	132400	600370	(385,539.65)
CS	Finance	Treasury Administration	2022	101000	134100	600390	(443,524.62)
CS	Finance	Revenue Management	2022	101000	134200	404220	(64,940.00)
CS	Finance	Revenue Management	2022	101000	134200	406600	(14,932.57)
CS	Finance	Revenue Management	2022	101000	134200	406625	(412,218.65)
CS	Finance	Revenue Management	2022	101000	134200	408550	(10.00)
CS	Finance	Revenue Management	2022	101000	134200	408580	(33,948.54)
CS	Finance	Revenue Management	2022	101000	134200	600400	(1,658,904.52)
CS	Finance	IGC-Rev Mgmt-E911	2022	101000	134271	600410	(13,768.93)
CS	Finance	IGC-Rev Mgmt-PSAR Billing	2022	101000	134272	600420	(176,507.42)
CS	Finance	IGC-Rev Mgmt-Cash Receipts	2022	101000	134273	600430	(232,578.40)
CS	Finance	IGC-Rev Mgmt-In-House Collec	2022	101000	134274	600440	(29,196.73)

CSP Cat.	Department	Cost Center Description	Fiscal		Cost		Actuals
			Year	Fund	Center	Acct	
CS	Finance	IGC-Rev Mgmt-DCF	2022	101000	134275	600450	(429,656.28)
CS	Finance	IGC-Exter Collect Agency Recov	2022	101000	134276	600490	(35,998.22)
CS	Finance	Tax Billing	2022	101000	134600	401040	(5,815.36)
CS	Finance	Tax Billing	2022	101000	134600	406625	38.55
CS	Finance	Tax Billing	2022	101000	134600	408550	100.61
CS	Finance	Tax Billing	2022	101000	134600	600470	(730,617.37)
CS	Finance	IGC-Tax Billing Utilities	2022	101000	134671	600480	(74,157.65)
CS	Finance	Remittance Processing	2022	101000	134700	600510	(308,564.48)
CS	Finance	IGC-Remittance Processing	2022	101000	134771	600520	(212,971.20)
CS	Chief Fiscal Officer	Chief Fiscal Officer	2022	101000	137000	600330	(323,569.87)
CS	Purchasing	Purchasing Services	2022	101000	138100	406625	(207,661.95)
CS	Purchasing	Purchasing Services	2022	101000	138100	408580	(266,805.36)
CS	Purchasing	Purchasing Services	2022	101000	138100	600320	(1,357,454.23)
CS	Management & Budget	Management & Budget	2022	101000	139100	408580	(200.00)
CS	Management & Budget	Management & Budget	2022	101000	139100	600300	(996,051.40)
CS	Information Technology	Reprographics	2022	101000	142300	600230	(1,167,981.63)
CS	Information Technology	IGC-Repro	2022	101000	142371	600240	(759,147.41)
CS	Information Technology	Records Management	2022	101000	142400	600250	(281,146.43)
CS	Human Resources	Employee Relations Admin	2022	101000	181000	600620	(613,089.97)
CS	Human Resources	Labor Relations	2022	101000	184100	600610	(1,239,275.33)
CS	Human Resources	Employment	2022	101000	184500	406625	(505.40)
CS	Human Resources	Employment	2022	101000	184500	600580	(2,241,786.14)
CS	Human Resources	Benefits	2022	101000	187100	406580	(254.17)
CS	Human Resources	Benefits	2022	101000	187100	406620	(134,908.29)
CS	Human Resources	Benefits	2022	101000	187100	600570	(517,934.21)
CS	Community Development	OECD Admin	2022	101000	510500	406625	(750.00)
CS	Community Development	OECD Admin	2022	101000	510500	408380	(1,084.56)
CS	Community Development	OECD Admin	2022	101000	510500	601690	(293,713.19)
CS	Community Development	OECD Data & Analytics	2022	101000	510600	600110	(984,979.09)
CS	Community Development	IGC-OECD GIS Licensing	2022	101000	510671	601900	(324,999.96)
CS	Community Development	IGC-OECD GIS Enterprise Proq	2022	101000	510672	601910	(515,979.13)
CS	Community Development	IGC-OECD GIS Dept Support	2022	101000	510673	601920	(144,000.00)
CS	Maintenance & Operation	Facility Maintenance	2022	101000	710500	406625	(2,322.77)
CS	Maintenance & Operation	Facility Maintenance	2022	101000	710500	408380	(42,260.38)
CS	Maintenance & Operation	Facility Maintenance	2022	101000	710500	601000	(5,729,970.34)
CS	Maintenance & Operation	Facilities-Girdwood	2022	101000	710503	601010	(62,606.46)
CS	Maintenance & Operation	Facilities-Eagle River Town Cen	2022	101000	710506	601020	(187,864.63)
CS	Maintenance & Operation	Facilities-Fire Stations	2022	101000	710509	601030	(2,597,706.13)
CS	Maintenance & Operation	Facilities-Libraries	2022	101000	710512	601040	(3,162,335.58)
CS	Maintenance & Operation	Facilities-Fac Maint Whse	2022	101000	710515	601050	(331,490.60)
CS	Maintenance & Operation	Facilities-Traffic	2022	101000	710518	601060	(55,621.01)
CS	Maintenance & Operation	Facilities-RES/Historical Properl	2022	101000	710521	601070	(55,868.74)
CS	Maintenance & Operation	Facilities-Areawide Parks & Rec	2022	101000	710524	601080	(813,378.13)
CS	Maintenance & Operation	Facilities-Health and Human Se	2022	101000	710527	601090	(1,377,289.34)
CS	Maintenance & Operation	Facilities-ARDSA	2022	101000	710530	601100	(31,844.01)
CS	Maintenance & Operation	Facilities-Transit/Centers/Park &	2022	101000	710533	601110	(1,981,583.87)
CS	Maintenance & Operation	Facilities-Fleet Maint	2022	101000	710536	601120	(397,519.20)
CS	Maintenance & Operation	Facilities-Police / Substations	2022	101000	710539	601130	(1,791,868.14)
CS	Maintenance & Operation	Facilities-Eagle River Parks & R	2022	101000	710542	601140	(4,374.50)
CS	Maintenance & Operation	Facilities-City Hall	2022	101000	710545	601150	(324,579.42)
CS	Maintenance & Operation	Facilities-Eagle River Parks & R	2022	101000	710548	601160	(857.40)
CS	Maintenance & Operation	Facilities-Eagle River Parks & R	2022	101000	710551	601170	(15,500.59)
CS	Maintenance & Operation	Facilities-Areawide Parks & Rec	2022	101000	710554	601180	(110,054.88)
CS	Maintenance & Operation	Facilities-Heritage Land Bank	2022	101000	710557	601190	(26,918.07)
CS	Maintenance & Operation	Facilities-Chugiak Fire Service /	2022	101000	710560	601670	(45,342.06)
CS	Maintenance & Operation	Facilities-CBERRRSA	2022	101000	710562	601630	(92.23)
CS	Maintenance & Operation	Facilities-NC HJ Mac Mem Ctr	2022	101000	710563	601200	(5,740.74)
CS	Maintenance & Operation	Facilities-NC Sullivan Arena	2022	101000	710566	601210	(3,908.32)
CS	Maintenance & Operation	Facilities-NC Egan Center	2022	101000	710569	601220	(7,050.99)

CSP Cat.	Department	Cost Center Description	Fiscal Year	Fund	Cost Center	Acct	Actuals
CS	Maintenance & Operation	Facilities-NC Performing Arts C	2022	101000	710575	601240	(36,356.76)
CS	Maintenance & Operation	Facilities-NC Anchorage Museu	2022	101000	710581	601260	(11,005.00)
CS	Maintenance & Operation	Facilities-Permit Center	2022	101000	710583	601680	(0.86)
CS	Maintenance & Operation	Facility Capital Improvements	2022	101000	710800	405120	(2,000.09)
CS	Maintenance & Operation	Facility Capital Improvements	2022	101000	710800	450010	(411.00)
CS	Maintenance & Operation	Facility Capital Improvements	2022	101000	710800	601330	(903,715.74)
CS	Information Technology	Admin Support	2022	607000	141100	600260	(1,753,005.79)
CS	Information Technology	IGC - IT Security	2022	607000	143500	601870	(997,752.06)
CS	Information Technology	IGC - IT Security - All	2022	607000	143571	601840	(269,393.06)
CS	Information Technology	IGC - IT Security - No AWWU	2022	607000	143572	601850	(728,359.00)
CS	Information Technology	Fixed Assets	2022	607000	144000	440010	1,104,682.20
CS	Information Technology	Fixed Assets	2022	607000	144000	600280	(1,248,085.81)
CS	Information Technology	IGC - Microsoft EA SW & HW	2022	607000	144003	601590	(1,483,302.54)
CS	Information Technology	Application Services	2022	607000	145100	600290	(2,211,268.53)
CS	Information Technology	IGC - SAP Support Centr	2022	607000	146200	601890	(5,941,653.46)
CS	Information Technology	IGC - SAP Capital Recovery	2022	607000	146279	601880	(3,973,188.00)
CS	Information Technology	Projects & Procurement	2022	607000	147300	600150	(1,577,755.91)
CS	Information Technology	Desktop Services	2022	607000	148100	600200	(2,277,152.65)
CS	Information Technology	Network Services	2022	607000	148200	600100	(5,586,341.93)
CS	Information Technology	IGC - Netwk Svcs - Servers	2022	607000	148271	600540	(2,995,955.17)
CS	Information Technology	IGC - Netwk Svcs - Network	2022	607000	148272	601580	(2,075,326.02)
CS	Information Technology	IGC - Netwk Svcs - Phones	2022	607000	148273	601600	(515,060.70)
CS	Information Technology	Technology Services	2022	607000	148300	600070	(1,049,805.60)
							<u>(96,556,453.03)</u>



Municipality of Anchorage

Intragovernmental Charges Methodologies

Department: Assembly

Contact: Assembly Admin Officer

Fund: 101000

Telephone: 343-4376

Cost Pool (Cost Center / Name): 102003 / Clerk Agenda Control

Services Provided: Agenda control in the form of receiving, compiling, managing, and distributing Assembly agenda items submitted by all Municipal departments. Assembly agenda documents consist of items such as Assembly Information Memorandums (AIM), Assembly Memorandums (AM), Assembly Resolutions (AR), and Assembly Ordinances (AO). (AMC 2.20 - Assembly, Generally)

Charge-Out Methodology: Allocation of cost pool is based on the ratio of prior two year average of Assembly agenda items successfully processed through the electronic document routing system (OnBase), attributable to the requesting department to total prior two year average number of Assembly agenda items successfully processed through OnBase. Central service allocating departments are omitted and thus the cost that would be assigned to them is allocated to direct service departments receiving this service.

Allocation Factor: Month-end automated calculation.



Municipality of Anchorage

Intragovernmental Charges Methodologies

Department: Assembly

Contact: Assembly Admin Officer

Fund: 101000

Telephone: 343-4376

Cost Pool (Cost Center / Name): 102006 / Clerk Municipal Audit

Services Provided: Annual financial audit of Municipal entities performed by certified public accountants contracted through the Municipal purchasing process. The Municipal Clerk administers the contract for the annual municipal independent financial audit and such other contracts as may be assigned by ordinance. (AMC 2.20.055.B.7)

Charge-Out Methodology: Allocation of cost pool is based on the ratio of current year budgeted labor costs for each recipient cost center to total current year budgeted labor costs for all recipient cost centers. Central service allocating departments are omitted and thus the cost that would be assigned to them is allocated to the direct service departments receiving this service. Anchorage Water & Wastewater Utility and Port are not included in this allocation since the financial audit costs are charged to them directly.

Allocation Factor: Month-end automated calculation.



Municipality of Anchorage

Intragovernmental Charges Methodologies

Department: Assembly

Contact: Assembly Admin Officer

Fund: 101000

Telephone: 343-4376

Cost Pool (Cost Center / Name): 102007 / Clerk Liquor License

Services Provided: Business License Official's processing of liquor license applications and renewals for local government action. (AMC 2.20, AMC 2.30, AMC 12.05, and AMC 21.02)

Charge-Out Methodology: 100% to the Anchorage Police Department, Anchorage Police Service Area

Allocation Factor: Month-end automated calculation.



Municipality of Anchorage

Intragovernmental Charges Methodologies

Department: Assembly

Contact: Ombudsman

Fund: 101000

Telephone: 343-4783

Cost Pool (Cost Center / Name): 103000 / Ombudsman

Services Provided: Investigation of complaints or inquires about the Municipality or Anchorage School District (ASD), per Article IV. - The Assembly Section 4.07 and Title 2 - Legislative Branch[1] Regulation 2.60 - Office of the Ombudsman. Provides value by preventing complaints, increasing efficiencies, and saving money by addressing issues and recommending changes to municipal policies, forms, and codes. Can act as an outside voice that advocates for fairness in government.

Charge-Out Methodology: Allocation of cost pool is based on the ratio of prior two-year average of transaction counts of contracts, referrals, and cases indicated in City View software, attributable to each recipient department to the total number of transaction counts of contracts, referrals, and cases indicated in City View for all recipient departments. Central service allocating departments are omitted and thus the cost that would be assigned to them is allocated to the direct service departments receiving this service. Activity attributable to the Anchorage School District (ASD) or not attributable to any specific Municipal department is allocated to Areawide service area.

Allocation Factor: Month-end automated calculation.



Municipality of Anchorage

Intragovernmental Charges Methodologies

Department: Internal Audit

Contact: Municipal Auditor

Fund: 101000

Telephone: 343-4438

Cost Pool (Cost Center / Name): 106000 / Internal Audit

Services Provided: Provides the Assembly, school district, and Mayor with independent compliance and performance audits to determine whether government operations are adequately controlled.

Charge-Out Methodology: Allocation of cost pool is based on the ratio of current year budgeted labor costs for each recipient cost center to total current year budgeted labor costs for all recipient cost centers. Central service allocating departments are omitted and thus the cost that would be assigned to them is allocated to the direct service departments receiving this service.

Allocation Factor: Month-end automated calculation.



Municipality of Anchorage

Intragovernmental Charges Methodologies

Department: Office of Equity & Justice

Contact: Equity Officer

Fund: 101000

Telephone: 343-7124

Cost Pool (Cost Center / Name): 107000 / Equity & Justice

Services Provided: Develops leadership opportunities for municipal staff and residents designed to provide career advancement pathways for communities of color, the disability community, immigrants and refugees, LGBTQ+ residents, including continued hosting of an annual Civic Engagement Academy; provides leadership, guidance, training, and support to internal and external partners in the development and delivery of equity programs and tools; and actively monitors equity.

Charge-Out Methodology: Allocation of cost pool is based on the ratio of current year budgeted labor costs for each recipient cost center to total current year budgeted labor costs for all recipient cost centers. Central service allocating departments are omitted and thus the cost that would be assigned to them is allocated to the direct service departments receiving this service.

Allocation Factor: Month-end automated calculation.



Municipality of Anchorage

Intragovernmental Charges Methodologies

Department: Office of the Mayor

Contact: Mayor Admin Officer

Fund: 101000

Telephone: 343-4281

Cost Pool (Cost Center / Name): 111100 / Mayor

Services Provided: Provides leadership of all Municipal departments and ensuring compliance with charter and Municipal Code. (AMC 3.20.020 - Powers of the Mayor; 3.20.040 - Office of the Mayor)

Charge-Out Methodology: Allocation of cost pool is based on the ratio of current year budgeted labor costs for each recipient cost center to total current year budgeted labor costs for all recipient cost centers. Central service allocating departments are omitted and thus the cost that would be assigned to them is allocated to the direct service departments receiving this service. Unallowable costs will be removed from allocations before each year end.

Allocation Factor: Month-end automated calculation.



Municipality of Anchorage

Intragovernmental Charges Methodologies

Department: Municipal Manager

Contact: Muni Mgr Admin Officer

Fund: 101000

Telephone: 343-4890

Cost Pool (Cost Center / Name): 113200 / Office of Equal Opportunity

Services Provided: Provides primary functions of: Equal Employment Opportunity Program, Small Business Program, and Disadvantaged Business Enterprise (DBE) Liaison Officer (LO).

Charge-Out Methodology: Allocation of cost pool is based on the estimated percentage of time spent on each primary function provided by the Office of Equal Opportunity.

Allocation Factor: Month-end automated calculation.



Municipality of Anchorage

Intragovernmental Charges Methodologies

Department: Municipal Manager

Contact: Muni Mgr Admin Officer

Fund: 101000

Telephone: 343-4890

Cost Pool (Cost Center / Name): 113271 / IGC OEO Equal Employment Opportunity Prg

Services Provided: Equal Employment Opportunity Program - UMTA C 4704.1 and Title VII of the Civil Rights Act of 1964 - Department administers discrimination and harassment complaints, sexual harassment training, and the implementation of the Municipality of Anchorage Affirmative Action Plan

Charge-Out Methodology: Allocation of cost pool is based on the ratio of current year budgeted position counts for each recipient cost center to total current year budgeted position counts for all recipient cost centers. Central service allocating departments are omitted and thus the cost that would be assigned to them is allocated to the direct service departments receiving this service.

Allocation Factor: Month-end automated calculation.



Municipality of Anchorage

Intragovernmental Charges Methodologies

Department: Municipal Manager

Contact: Muni Mgr Admin Officer

Fund: 101000

Telephone: 343-4890

Cost Pool (Cost Center / Name): 113273 / IGC-OEO-Contract DBE

Services Provided: Provides Disadvantaged Business Enterprise (DBE) Liaison Officer (LO), in compliance with requirements to receive federal funding from the Department of Transportation (DOT) (49CFR 26.37). Provides oversight of federal contract compliances, annual required reporting, ensures nondiscrimination in the award and administration of DOT-assisted projects with monitoring and enforcement, and Small Business Development Program. Assigned 5% DBE goal (minority business) for federal financial assistance.

Charge-Out Methodology: Allocation of cost pool is based on equal allocation to each Municipal department receiving federal funding from the DOT.

Allocation Factor: Month-end automated calculation.



Municipality of Anchorage

Intragovernmental Charges Methodologies

Department: Municipal Attorney

Contact: Muni Atty Admin Officer

Fund: 101000

Telephone: 343-4325

Cost Pool (Cost Center / Name): 115100 / Civil Law

Services Provided: Provides legal counsel for civil all Municipal matters. Provides value by providing legal counsel, support, and advice on specific legislation, the Municipal Code, Charter, and legislative procedures and also provides legal work with a low incidence of remand or reversal on appeal. Represents the Municipality in all litigation.

Charge-Out Methodology: Allocation of cost pool is based on the ratio of prior five-year average time spent representing requesting municipal departments on civil matters using "Time Matters" application software, to total prior five-year average time spent representing all municipal departments receiving this service. Central service allocating departments are omitted and thus the cost that would be assigned to them is allocated to direct service departments receiving this service.

Allocation Factor: Month-end automated calculation.



Municipality of Anchorage

Intragovernmental Charges Methodologies

Department: Municipal Attorney

Contact: Muni Atty Admin Officer

Fund: 101000

Telephone: 343-4325

Cost Pool (Cost Center / Name): 115200 / Criminal

Services Provided: Provides legal services to prosecute misdemeanor and traffic offenses. Maintains a high conviction rate resulting in punished offenders, deterred crime, and increased dollars awarded to victims in restitution.

Charge-Out Methodology: 100% to the Anchorage Police Department, Anchorage Metropolitan Police Service Area

Allocation Factor: Month-end automated calculation.



Municipality of Anchorage

Intragovernmental Charges Methodologies

Department: Municipal Attorney

Contact: Muni Atty Admin Officer

Fund: 101000

Telephone: 343-4325

Cost Pool (Cost Center / Name): 115300 / Administrative Hearing

Services Provided: Provides adjudication of administrative code violations. Provides a quick turnaround time for hearings and decisions resulting in an increase in citizen satisfaction with the hearing process.

Charge-Out Methodology: Allocation of cost pool is based on the ratio of prior five-year average time spent representing requesting municipal departments on civil matters using "Time Matters" application software, to total prior five-year average time spent representing all municipal departments receiving this service. Central service allocating departments are omitted and thus the cost that would be assigned to them is allocated to direct service departments receiving this service.

Allocation Factor: Month-end automated calculation.



Municipality of Anchorage

Intragovernmental Charges Methodologies

Department: Municipal Attorney

Contact: Muni Atty Admin Officer

Fund: 101000

Telephone: 343-4325

Cost Pool (Cost Center / Name): 115400 / Muni Attorney Administration

Services Provided: Provides administrative services to other sections within Office of the Municipal Attorney. Provides value by acting as chief counsel to the municipal departments, including the Mayor, Assembly, Anchorage School District, and all executive, legislative, department, agencies, boards, and commissions. Also adds value of keeping turnover low and providing for continuing legal education (CLE) training allows for high quality and efficient legal work.

Charge-Out Methodology: Allocation of cost pool is based on estimated time spent on each cost center in the Office of the Municipal Attorney and each municipal department, updated by Municipal Attorney annually.

Allocation Factor: Month-end automated calculation.



Municipality of Anchorage

Intragovernmental Charges Methodologies

Department: Municipal Manager

Contact: Muni Mgr Admin Officer

Fund: 101000

Telephone: 343-1405

Cost Pool (Cost Center / Name): 121000 / Muni Manager Administration

Services Provided: The office of the Municipal Manager is responsible to the Mayor for overall Municipal Administrative policy, public safety, and operations of the Municipality and provides management operational oversight to multiple department's including the Municipality Utilities and Enterprises. (AMC 3.20.045 - Office of the Municipal Manager)

Charge-Out Methodology: Allocation of cost pool is based on the ratio of current year budgeted labor costs for each recipient cost center to total current year budgeted labor costs for all recipient cost centers. Central service allocating departments are omitted and thus the cost that would be assigned to them is allocated to the direct service departments receiving this service.

Allocation Factor: Month-end automated calculation.



Municipality of Anchorage

Intragovernmental Charges Methodologies

Department: Municipal Manager

Contact: Muni Mgr Admin Officer

Fund: 101000

Telephone: 343-1405

Cost Pool (Cost Center / Name): 121010 / Deputy Municipal Manager

Services Provided: The office of the Municipal Manager is responsible to the Mayor for overall Municipal Administrative policy, public safety, and operations of the Municipality and provides management operational oversight to multiple department's including the Municipality Utilities and Enterprises. (AMC 3.20.045 - Office of the Municipal Manager).

The Deputy Municipal Manger provides oversight to: Anchorage Water & Wastewater Utility, Solid Waste Services, Merrill Field Airport, Port of Alaska, and Public Transportation.

Charge-Out Methodology: Allocation of cost pool is based on the ratio of current year budgeted labor costs for each recipient cost center to total current year budgeted labor costs for all recipient cost centers.

Allocation Factor: Month-end automated calculation.



Municipality of Anchorage

Intragovernmental Charges Methodologies

Department: Real Estate

Contact: RE Admin Officer

Fund: 101000

Telephone: 343-7534

Cost Pool (Cost Center / Name): 122300 / Leases Administration

Services Provided: Provides negotiations and management of municipal leases, acquisitions, and disposition of office, warehouse, and other types of municipal space, and municipal land required by all municipal agencies.

Charge-Out Methodology: Allocation of cost pool is based on ratio of square footage use by each lease facility cost pool, to total square footage within this cost pool.

Allocation Factor: Month-end automated calculation.



Municipality of Anchorage

Intragovernmental Charges Methodologies

Department: Real Estate

Contact: RE Admin Officer

Fund: 101000

Telephone: 343-7534

Cost Pool (Cost Center / Name): 122301 / Leases Parking Garage

Services Provided: Provides real estate lease services for municipal use of the Parking Garage at Sixth and G, Anchorage, AK 99501.

Charge-Out Methodology: 100% to the Public Transportation Department, Areawide Service Area

Allocation Factor: Month-end automated calculation.



Municipality of Anchorage

Intragovernmental Charges Methodologies

Department: Real Estate

Contact: RE Admin Officer

Fund: 101000

Telephone: 343-7534

Cost Pool (Cost Center / Name): 122302 / Leases City Hall

Services Provided: Provides real estate lease services for municipal use of City Hall located at 632 West Sixth Avenue, Anchorage, AK 99501.

Charge-Out Methodology: Allocation of cost pool is based on ratio of square footage use by department, to total square footage within this cost pool. Charged to all departments, including central service allocating departments that receive this service.

Allocation Factor: Month-end automated calculation.



Municipality of Anchorage

Intragovernmental Charges Methodologies

Department: Real Estate

Contact: RE Admin Officer

Fund: 101000

Telephone: 343-7534

Cost Pool (Cost Center / Name): 122303 / Leases ERTC

Services Provided: Provides real estate lease services for municipal use of the Eagle River Town Center (ERTC) located at 12001 Business Boulevard, Eagle River, AK 99577. Does not include Unit #3.

Charge-Out Methodology: Allocation of cost pool is based on ratio of square footage use by department, to total square footage within this cost pool. Charged to all departments, including central service allocating departments that receive this service.

Allocation Factor: Month-end automated calculation.



Municipality of Anchorage

Intragovernmental Charges Methodologies

Department: Real Estate

Contact: RE Admin Officer

Fund: 101000

Telephone: 343-7534

Cost Pool (Cost Center / Name): 122304 / Leases Libraries

Services Provided: Provides real estate lease services for municipal use of the Muldoon Library in the North East Community Center / Muldoon Community Center located at 1251 Muldoon Road, Anchorage, AK 99504.

Charge-Out Methodology: 100% to the Library Department, Areawide Service Area.

Allocation Factor: Month-end automated calculation.



Municipality of Anchorage

Intragovernmental Charges Methodologies

Department: Real Estate

Contact: RE Admin Officer

Fund: 101000

Telephone: 343-7534

Cost Pool (Cost Center / Name): 122306 / Leases Traffic

Services Provided: Provides real estate lease services for municipal use of the Traffic Signals Engineering Warehouse / Beardsley Building.

Charge-Out Methodology: 100% to the Traffic Department, Areawide Service Area

Allocation Factor: Month-end automated calculation.



Municipality of Anchorage

Intragovernmental Charges Methodologies

Department: Real Estate

Contact: RE Admin Officer

Fund: 101000

Telephone: 343-7534

Cost Pool (Cost Center / Name): 122307 / Leases Recreation

Services Provided: Provides real estate lease services for municipal use of North East Community Center / Muldoon Community Center located at 1251 Muldoon Road, Anchorage, AK 99504.

Charge-Out Methodology: 100% to the Anchorage Parks & Recreation Department, Anchorage Parks & Recreation Service Area

Allocation Factor: Month-end automated calculation.



Municipality of Anchorage

Intragovernmental Charges Methodologies

Department: Real Estate

Contact: RE Admin Officer

Fund: 101000

Telephone: 343-7534

Cost Pool (Cost Center / Name): 122309 / Leases Permit Center

Services Provided: Provides real estate lease services for municipal use of the Anchorage Permit & Development Center located at 4700 Elmore Road, Anchorage, AK 99507.

Charge-Out Methodology: Allocation of cost pool is based on ratio of square footage use by department, to total square footage within this cost pool. Charged to all departments, including central service allocating departments that receive this service.

Allocation Factor: Month-end automated calculation.



Municipality of Anchorage

Intragovernmental Charges Methodologies

Department: Real Estate

Contact: RE Admin Officer

Fund: 101000

Telephone: 343-7534

Cost Pool (Cost Center / Name): 122310 / Leases Police

Services Provided: Provides real estate leasing services for municipal use of facilities located at: the State of Alaska, Boney Court House for Warrants located at 303 K Street, Anchorage, AK 99501, and the Spenard / Seely Substation located at Westchester Lagoon (the Spenard / Seely Substation will not be used after 2019).

Charge-Out Methodology: 100% to the Anchorage Police Department, Anchorage Metropolitan Police Service Area

Allocation Factor: Month-end automated calculation.



Municipality of Anchorage

Intragovernmental Charges Methodologies

Department: Municipal Manager

Contact: Muni Mgr Admin Officer

Fund: 101000

Telephone: 343-1405

Cost Pool (Cost Center / Name): 124200 / Office of Emergency Management

Services Provided: Provides emergency response preparedness. Provides emergency preparedness, planning, Emergency Operations Center (EOC) training and education outreach and ensures compliance with federal regulations. Services provided to all Municipal departments except Anchorage Water & Wastewater Utility.

Charge-Out Methodology: Allocation of cost pool is based on the ratio of current year budgeted labor costs for each recipient cost center to total current year budgeted labor costs for all recipient cost centers. Central service allocating departments are omitted and thus the cost that would be assigned to them is allocated to the direct service departments receiving this service.

Allocation Factor: Month-end automated calculation.



Municipality of Anchorage

Intragovernmental Charges Methodologies

Department: Municipal Manager

Contact: Risk Manager

Fund: 101000

Telephone: 343-2527

Cost Pool (Cost Center / Name): 124700 / Risk Management

Services Provided: Processes claims for and against the Municipality from accident, injury, or property damage and related collections administration.

Charge-Out Methodology: 100% to the Municipal Manager Department, Risk Division, General Liability / Workers' Compensation Fund (602).

Allocation Factor: Month-end automated calculation.



Municipality of Anchorage

Intragovernmental Charges Methodologies

Department: Municipal Manager

Contact: Risk Manager

Fund: 101000

Telephone: 343-2527

Cost Pool (Cost Center / Name): 124900 / Safety

Services Provided: Provides safety training and liability mitigation, with a mission to reduce workers' compensation and tort liability claims.

Charge-Out Methodology: 100% to the Municipal Manager Department, Risk Division, General Liability / Workers' Compensation Fund (602).

Allocation Factor: Month-end automated calculation.



Municipality of Anchorage

Intragovernmental Charges Methodologies

Department: Finance

Contact: Controller

Fund: 101000

Telephone: 343-6765

Cost Pool (Cost Center / Name): 132100 / Controller Administration

Services Provided: Houses the Controller position that provides oversight of the administration of the Controller division and preparation of the Annual Comprehensive Financial Report (ACFR).

Charge-Out Methodology: Allocation of cost pool is based on the estimated percentage of time spent with each agency under the Controller Division.

Allocation Factor: Month-end automated calculation.



Municipality of Anchorage

Intragovernmental Charges Methodologies

Department: Finance

Contact: Controller

Fund: 101000

Telephone: 343-6765

Cost Pool (Cost Center / Name): 132200 / Central Accounting

Services Provided: Provides and maintains Municipal accounting records and prepares the Annual Comprehensive Financial Report (ACFR).

Services provided include:

- Grant accounting
- Reconciliation accounting
- Fund accounting
 - Fixed asset management
 - Fiduciary fund accounting
 - Enterprise fund accounting
- Subject Matter Experts (SMEs) for some SAP functionality

Charge-Out Methodology: Allocation of cost pool is based on the ratio of estimated time spent on each municipal fund to total time spend on all municipal funds.

Allocation Factor: Month-end automated calculation.



Municipality of Anchorage

Intragovernmental Charges Methodologies

Department: Finance

Contact: Payroll Manager

Fund: 101000

Telephone: 343-6935

Cost Pool (Cost Center / Name): 132300 / Payroll

Services Provided: Issues payroll checks and maintains employee records for taxes and other deductions.

Charge-Out Methodology: Allocation of cost pool is based on the ratio of budgeted labor associated with position duties.

Allocation Factor: Month-end automated calculation.



Municipality of Anchorage

Intragovernmental Charges Methodologies

Department: Finance

Contact: AP Manager

Fund: 101000

Telephone: 343-6937

Cost Pool (Cost Center / Name): 132400 / Accounts Payable

Services Provided: Processes payments for goods and services purchased for all Municipal departments, including enterprise and utilities.

Charge-Out Methodology: Allocation of cost pool is based on the prior two years percentage of vouchers per department to total number of vouchers processed for all recipients, includes enterprise and utilities.

Allocation Factor: Month-end automated calculation.



Municipality of Anchorage

Intragovernmental Charges Methodologies

Department: Finance

Contact: Treasurer

Fund: 101000

Telephone: 343-6965

Cost Pool (Cost Center / Name): 134100 / Treasury Administration

Services Provided: Provides direction and supervision for all Treasury sections including Tax Billing and collection, Remittance Processing, and Revenue Management, and also monitors and reports on the Municipality of Anchorage (MOA) Trust Fund (730), and the Police/Fire Retiree Medical Liability Fund (281). No direct allocation required for the property tax collection cost pool as cost are held as an area wide tax cost.

Charge-Out Methodology: Allocation of cost pool is based on the ratio of current year budgeted position costs in each agency within the Treasury Division after MOA Trust Fund (730) and Police/Fire Retiree Medical Liability Fund (281) are charged for estimated time spent.

Allocation Factor: Month-end automated calculation.



Municipality of Anchorage

Intragovernmental Charges Methodologies

Department: Finance

Contact: Treasurer

Fund: 101000

Telephone: 343-6965

Cost Pool (Cost Center / Name): 134200 / Revenue Management

Services Provided: Performs all functions associated with administration and enforcement of self-reported taxes (room taxes, rental vehicles, and tobacco taxes) and management and analysis of General Government revenues.

Charge-Out Methodology: Allocation of cost pool is based on the estimated time spent, using budgeted labor costs for specifically dedicated positions for year.

Allocation Factor: Month-end automated calculation.



Municipality of Anchorage

Intragovernmental Charges Methodologies

Department: Finance

Contact: Treasurer

Fund: 101000

Telephone: 343-6965

Cost Pool (Cost Center / Name): 134271 / IGC Rev Mgmt E911

Services Provided: Administers accounts receivable and processes payments received for E911 revenue.

Charge-Out Methodology: 50% to the Anchorage Fire Department and 50% to the Anchorage Police Department, all to the E911 Surcharge Fund (211).

Allocation Factor: Month-end automated calculation.



Municipality of Anchorage

Intragovernmental Charges Methodologies

Department: Finance

Contact: Treasurer

Fund: 101000

Telephone: 343-6965

Cost Pool (Cost Center / Name): 134272 / IGC Rev Mgmt PSAR Billing

Services Provided: Administers General Government accounts receivable and processes payments received for PSAR billing. Utilities excluded. Service to utilities limited to payment processing and considered minimal and not allocated.

Charge-Out Methodology: Allocation of cost pool is based on the number of invoices prior year generated out of the module.

Allocation Factor: Month-end automated calculation.



Municipality of Anchorage

Intragovernmental Charges Methodologies

Department: Finance

Contact: Treasurer

Fund: 101000

Telephone: 343-6965

Cost Pool (Cost Center / Name): 134273 / IGC Rev Mgmt Cash Receipts

Services Provided: Records and audits all paper-based and limited electronic cash receipts for all departments city-wide. These functions are based on Municipal cash handling policy that ensures quality of data and protects against monetary loss. Utilities included.

Charge-Out Methodology: Allocation of cost pool is based on number of prior year cash receipts generated by each recipient department over all cash receipts generated by all departments in the pool

Allocation Factor: Month-end automated calculation.



Municipality of Anchorage

Intragovernmental Charges Methodologies

Department: Finance

Contact: Treasurer

Fund: 101000

Telephone: 343-6965

Cost Pool (Cost Center / Name): 134274 / IGC Rev Mgmt In House Collections

Services Provided: Department administers city-wide contract with a collection agency to refer and collect delinquent accounts receivable for fines and invoiced services, including, but not limited to delinquent self-reporting taxes, unpaid ambulance fees, library fees, utility bills, miscellaneous billings, and billings from project 134272 (PSAR billings). Diminimus amounts (less than .2%) are not directly allocated.

Charge-Out Methodology: Allocation of cost pool is based on prior year transaction count of accounts referred to the contracted collection agency.

Allocation Factor: Month-end automated calculation.



Municipality of Anchorage

Intragovernmental Charges Methodologies

Department: Finance

Contact: Treasurer

Fund: 101000

Telephone: 343-6965

Cost Pool (Cost Center / Name): 134275 / IGC Rev Mgmt DCF

Services Provided: Administers collection efforts related to Delinquent Criminal/Civil Fines & Fees (DCF) on behalf of APD & Legal Departments, excluding utilities. DCF is a specialized function, and these functional costs are allocated to APD and Legal Department.

Charge-Out Methodology: Allocation of cost pool is based on prior year transaction count by department.

Allocation Factor: Month-end automated calculation.



Municipality of Anchorage

Intragovernmental Charges Methodologies

Department: Finance

Contact: Treasurer

Fund: 101000

Telephone: 343-6965

Cost Pool (Cost Center / Name): 134276 / IGC Exter Collect Agncy Recov

Services Provided: Department administers recoveries under city-wide collection agency contract, inclusive of recoveries for utilities. Diminimus amounts (less than .2%) are not directly allocated.

Charge-Out Methodology: Allocation of cost pool is based on the cost to process recoveries based on prior year transaction count of recoveries by department.

Allocation Factor: Month-end automated calculation.



Municipality of Anchorage

Intragovernmental Charges Methodologies

Department: Finance

Contact: Treasurer

Fund: 101000

Telephone: 343-6965

Cost Pool (Cost Center / Name): 134600 / Tax Billing

Services Provided: Provides billing, collections, and management of property tax receivables, processes tax payments, and requests for tax information Area-Wide. Utilities excluded.

Charge-Out Methodology: Allocation of cost pool is based on direct cost of activities associated with tax receivables to stay in Areawide or to become a pool that is sent to multiple departments, including utilities.

Allocation Factor: Month-end automated calculation.



Municipality of Anchorage

Intragovernmental Charges Methodologies

Department: Finance

Contact: Treasurer

Fund: 101000

Telephone: 343-6965

Cost Pool (Cost Center / Name): 134671 / IGC Tax Billing Utilities

Services Provided: Provides cashiering function associated with processing payments at Treasury public counter for many Municipal departments, including utilities.

Charge-Out Methodology: Allocation of cost pool is based costs associated with Treasury public counter payments based on volume of prior year payment transactions for identified departments, including utilities.

Allocation Factor: Month-end automated calculation.



Municipality of Anchorage

Intragovernmental Charges Methodologies

Department: Finance

Contact: Treasurer

Fund: 101000

Telephone: 343-6965

Cost Pool (Cost Center / Name): 134700 / Remittance Processing

Services Provided: Processes property tax and Municipal utility payments and ensures proper posting to customer accounts for Areawide and Municipal utility agencies.

Charge-Out Methodology: Allocation of cost pool is based on the prior year number of property tax remittance bills processed to stay in Areawide or to become a pool that is sent to Municipal utility agencies.

Allocation Factor: Month-end automated calculation.



Municipality of Anchorage

Intragovernmental Charges Methodologies

Department: Finance

Contact: Treasurer

Fund: 101000

Telephone: 343-6965

Cost Pool (Cost Center / Name): 134771 / IGC Remittance Processing

Services Provided: Processes property tax and Municipal utility payments and ensures proper posting to customer accounts for Municipal utility agencies.

Charge-Out Methodology: Allocation of cost pool is based on the prior year number of bills processed and type of utility.

Allocation Factor: Month-end automated calculation.



Municipality of Anchorage

Intragovernmental Charges Methodologies

Department: Chief Fiscal Officer

Contact: Chief Fiscal Officer Admin

Fund: 101000

Telephone: 343-4281

Cost Pool (Cost Center / Name): 137000 / Chief Fiscal Officer

Services Provided: Oversees all financial matters of the Municipality and is responsible for the management and operation of the departments as set forth in municipal code. (AMC 3.20.050 - Office of the Chief Fiscal Officer)

Charge-Out Methodology: Allocation of cost pool is based on the ratio of current year budgeted labor costs for each recipient cost center to total current year budgeted labor costs for all recipient cost centers. Central service allocating departments are omitted and thus the cost that would be assigned to them is allocated to the direct service departments receiving this service. Unallowable costs will be removed from allocations before each year end.

Allocation Factor: Month-end automated calculation.



Municipality of Anchorage

Intragovernmental Charges Methodologies

Department: Purchasing

Contact: Purchasing Director

Fund: 101000

Telephone: 343-4170

Cost Pool (Cost Center / Name): 138100 / Purchasing Services

Services Provided: Provides procurement services to Municipal departments in compliance with Anchorage Municipal Code Title 7 and ensures contract compliance

Charge-Out Methodology: Allocation of cost pool is based on weighted transaction and or line count of number of purchase orders, change orders, accounts payable transactions in gross, requisitions, and credit card activity.

Allocation Factor: Month-end automated calculation.



Municipality of Anchorage

Intragovernmental Charges Methodologies

Department: Office of Management & Budget

Contact: OMB Budget Analyst

Fund: 101000

Telephone: 343-4281

Cost Pool (Cost Center / Name): 139100 / Management & Budget

Services Provided: Provides fiscal and operational planning, monitoring compliance with Municipal policies and standards, management analysis, budgeting and program evaluation, and preparation and management of the Municipal budget. Provide fiscal responsibility and support pursuant to Anchorage Municipal Code (AMC 6.10) and the Mayors vision of a safe, secure, and strong municipality.

Charge-Out Methodology: Allocation of cost pool is based on the ratio of estimated time spent on each municipal fund to total time spend on all municipal funds.

Allocation Factor: Month-end automated calculation.



Municipality of Anchorage

Intragovernmental Charges Methodologies

Department: Information Technology

Contact: IT Sr Staff Accountant

Fund: 607000

Telephone: 343-6914

Cost Pool (Cost Center / Name): 141100 / Administration Support

Services Provided: Provides administrative services within the Information Technology department.

Charge-Out Methodology: Allocation of cost pool is based on the ratio of current year budgeted labor costs for each recipient cost center to total current year budgeted labor costs for all recipient cost centers.

Allocation Factor: Month-end automated calculation.



Municipality of Anchorage

Intragovernmental Charges Methodologies

Department: Information Technology

Contact: IT Sr Staff Accountant

Fund: 101000

Telephone: 343-6914

Cost Pool (Cost Center / Name): 142300 / Reprographics / Mailroom

Services Provided: Provides graphic design, forms coordination, printing, mailroom, and courier services for all Municipal departments.

Charge-Out Methodology: Allocation of cost pool is based on budgeted cost of activities associated with mailroom: to stay in Areawide, or reprographics: to become a pool that is sent to multiple departments.

Allocation Factor: Month-end automated calculation.



Municipality of Anchorage

Intragovernmental Charges Methodologies

Department: Information Technology

Contact: IT Sr Staff Accountant

Fund: 101000

Telephone: 343-6914

Cost Pool (Cost Center / Name): 142371 / IGC Repro

Services Provided: Provides graphic design, forms coordination, and printing for all Municipal departments

Charge-Out Methodology: Allocation of cost pool is based on prior two-year average use of reprographics services based on Service Request forms. Anchorage Water & Wastewater Utility is excluded as they are billed directly.

Allocation Factor: Month-end automated calculation.



Municipality of Anchorage

Intragovernmental Charges Methodologies

Department: Information Technology

Contact: IT Sr Staff Accountant

Fund: 101000

Telephone: 343-4286

Cost Pool (Cost Center / Name): 142400 / Records Management

Services Provided: Provides storage, archiving, and disposal of hard-copy written records for all Municipal departments that opt to use this service.

Charge-Out Methodology: Allocation of cost pool is based on prior two-year use of records storage space by box count.

Allocation Factor: Month-end automated calculation.



Municipality of Anchorage

Intragovernmental Charges Methodologies

Department: Information Technology

Contact: IT Sr Staff Accountant

Fund: 607000

Telephone: 343-6914

Cost Pool (Cost Center / Name): 143500 / IT Security

Services Provided: Provides enterprise management of all Municipal systems and Drive Encryption; audits departments to verify that regulatory requirements are met; and provides IT security from internal and external threats to the operation of the Municipal computer system.

Charge-Out Methodology: Allocation of cost pool is based on the ratio of current year budgeted labor costs for each recipient cost center to total current year budgeted labor costs for all recipient cost centers. Central service allocating departments are omitted and thus the cost that would be assigned to them is allocated to the direct service departments receiving this service.

Allocation Factor: Month-end automated calculation.



Municipality of Anchorage

Intragovernmental Charges Methodologies

Department: Information Technology

Contact: IT Sr Staff Accountant

Fund: 607000

Telephone: 343-6914

Cost Pool (Cost Center / Name): 143571 / IT Security – All Departments

Services Provided: Provides enterprise management of all Municipal systems and Drive Encryption; audits departments to verify that regulatory requirements are met; and provides IT security from internal and external threats to the operation of the Municipal computer system.

Charge-Out Methodology: Allocation of cost pool is based on the ratio of current year budgeted labor costs for each recipient cost center to total current year budgeted labor costs for all recipient cost centers. Central service allocating departments are omitted and thus the cost that would be assigned to them is allocated to the direct service departments receiving this service.

Allocation Factor: Month-end automated calculation.



Municipality of Anchorage

Intragovernmental Charges Methodologies

Department: Information Technology

Contact: IT Sr Staff Accountant

Fund: 607000

Telephone: 343-6914

Cost Pool (Cost Center / Name): 143572 / IT Security – No Anchorage Water & Wastewater Utility

Services Provided: Provides enterprise management of all Municipal systems and Drive Encryption; audits departments to verify that regulatory requirements are met; and provides IT security from internal and external threats to the operation of the Municipal computer system.

Charge-Out Methodology: Allocation of cost pool is based on the ratio of current year budgeted labor costs for each recipient cost center to total current year budgeted labor costs for all recipient cost centers. Central service allocating departments are omitted and thus the cost that would be assigned to them is allocated to the direct service departments receiving this service.

Allocation Factor: Month-end automated calculation.



Municipality of Anchorage

Intragovernmental Charges Methodologies

Department: Information Technology

Contact: IT Sr Staff Accountant

Fund: 607000

Telephone: 343-6914

Cost Pool (Cost Center / Name): 144000 / Fixed Assets

Services Provided: Provides recovery of debt-funded technology-related capital projects via depreciation and interest expense. Includes licenses, laptops, and other IT owned assets used to manage and maintain the IT environment and support customers.

Charge-Out Methodology: Allocation of cost pool is based on ratio of budgeted labor for each recipient to total budgeted labor of all recipients with Anchorage Water & Wastewater Utility is adjusted by application use estimate.

Allocation Factor: Month-end automated calculation.



Municipality of Anchorage

Intragovernmental Charges Methodologies

Department: Information Technology

Contact: IT Sr Staff Accountant

Fund: 607000

Telephone: 343-6914

Cost Pool (Cost Center / Name): 144003 / IGC MicroSoft EA SW & HW Upgrades

Services Provided: Provides MicroSoft Enterprise Agreement (MS EA) hardware and software maintenance and subscription costs that ensure that the municipality has current application software and recovery of muni-wide computer replacements. Anchorage Water & Wastewater Utility is excluded because they do not receive this service.

Charge-Out Methodology: Allocation of cost pool is based on ratio of total computers for each recipient department to total computers for all recipient departments.

Allocation Factor: Month-end automated calculation.



Municipality of Anchorage

Intragovernmental Charges Methodologies

Department: Information Technology

Contact: IT Sr Staff Accountant

Fund: 607000

Telephone: 343-6914

Cost Pool (Cost Center / Name): 145100 / Application Services

Services Provided: Provides support for enterprise and department application systems. Some examples of applications supported are: Pay Advice; Payment Net; SAP; Muniverse; Newsletters; Open Enrollment; Outage Tracking SharePoint Site; Muni.org (Administration & Content); Communications Tracking; QuesticaBudget; and NEO-Gov New Hire Onboarding.

Charge-Out Methodology: Allocation of cost pool is based on the ratio of budgeted labor for each recipient to total budgeted labor of all recipients with Anchorage Water & Wastewater Utility is adjusted by application use estimate.

Allocation Factor: Month-end automated calculation.



Municipality of Anchorage

Intragovernmental Charges Methodologies

Department: Information Technology

Contact: IT Sr Staff Accountant

Fund: 607000

Telephone: 343-6914

Cost Pool (Cost Center / Name): 146200 / IGC - SAP Support Center

Services Provided: Provides operating support for SAP applications, including consulting, security / access, and training.

Charge-Out Methodology: Allocation of cost pool is based on approved "SAP Capital Expenditure Cost Pools and Allocation Recommendations" that: identified SAP modules / functions, determined factors to best represent cost-causer / cost-payer for each module / function, and then weighted each module / function by the estimated cost of each SAP module.

Allocation Factor: Month-end automated calculation.



Municipality of Anchorage

Intragovernmental Charges Methodologies

Department: Information Technology

Contact: IT Sr Staff Accountant

Fund: 607000

Telephone: 343-6914

Cost Pool (Cost Center / Name): 147300 / Projects & Procurement

Services Provided: Provides oversight for most municipal IT projects, procurements, and technology refresh for all municipal departments excluding Anchorage Water & Wastewater Utility.

Charge-Out Methodology: Allocation of cost pool is based on the ratio of current year budgeted labor costs for each recipient cost center to total current year budgeted labor costs for all recipient cost centers. Central service allocating departments are omitted and thus the cost that would be assigned to them is allocated to the direct service departments receiving this service.

Allocation Factor: Month-end automated calculation.



Municipality of Anchorage

Intragovernmental Charges Methodologies

Department: Information Technology

Contact: IT Sr Staff Accountant

Fund: 607000

Telephone: 343-6914

Cost Pool (Cost Center / Name): 148100 / Desktop Services

Services Provided: Provides desktop computer hardware and software, peripheral equipment support and installation, and help desk services.

Charge-Out Methodology: Allocation of cost pool is based on actual direct cost to provide desktop services to the Department of Health and Human Services, Library Department, and all other municipal departments, excluding Police, and Anchorage Water & Wastewater Utility.

Allocation Factor: Month-end automated calculation.



Municipality of Anchorage

Intragovernmental Charges Methodologies

Department: Information Technology

Contact: IT Sr Staff Accountant

Fund: 607000

Telephone: 343-6914

Cost Pool (Cost Center / Name): 148200 / Network Services

Services Provided: Provides network systems support, communications system support and server systems support design and installation services.

Charge-Out Methodology: Allocation of cost pool is based on budgeted amount of labor and fixed costs such as servers and equipment split by work order count or area of assignment, with supplies split out 1/3 to each of the three service pools.

Allocation Factor: Month-end automated calculation.



Municipality of Anchorage

Intragovernmental Charges Methodologies

Department: Information Technology

Contact: IT Sr Staff Accountant

Fund: 607000

Telephone: 343-6914

Cost Pool (Cost Center / Name): 148271 / IGC Netwk Svcs Servers

Services Provided: Provides functionality for other programs, devices, or clients along with an environment that supports sharing data or resources among multiple clients, or performs computations for clients.

Charge-Out Methodology: Allocation of cost pool is based on the ratio of current year budgeted position counts for each recipient cost center to total current year budgeted position counts for all recipient cost centers after Anchorage Water & Wastewater Utility is charged the percent of applications they access to all applications available for use muni-wide.

Allocation Factor: Month-end automated calculation.



Municipality of Anchorage

Intragovernmental Charges Methodologies

Department: Information Technology

Contact: IT Sr Staff Accountant

Fund: 607000

Telephone: 343-6914

Cost Pool (Cost Center / Name): 148272 / IGC Netwk Svcs Network

Services Provided: Provides network systems support, design, and installation services.

Charge-Out Methodology: Allocation of cost pool is based on ratio of total computers and printers for each recipient department to total computers and printers for all recipient departments.

Allocation Factor: Month-end automated calculation.



Municipality of Anchorage

Intragovernmental Charges Methodologies

Department: Information Technology

Contact: IT Sr Staff Accountant

Fund: 607000

Telephone: 343-6914

Cost Pool (Cost Center / Name): 148273 / IGC Netwk Svcs Phones

Services Provided: Provides communications system support.

Charge-Out Methodology: Allocation of cost pool is based on ratio of total number of telephone lines for each recipient department to total number of telephone lines for all recipient departments.

Allocation Factor: Month-end automated calculation.



Municipality of Anchorage

Intragovernmental Charges Methodologies

Department: Information Technology

Contact: IT Sr Staff Accountant

Fund: 607000

Telephone: 343-6914

Cost Pool (Cost Center / Name): 148300 / Technology Services

Services Provided: Provides mainframe hardware, software, and peripheral equipment support design and installation for usage of mainframe system.

Charge-Out Methodology: Allocation of cost pool is based on actual use of mainframe system sorted by department and employee ID. Background system processing is allocated on a ratio of the actual usage of mainframe to total Municipality wide usage of the mainframe.

Allocation Factor: Month-end automated calculation.



Municipality of Anchorage

Intragovernmental Charges Methodologies

Department: Information Technology

Contact: IT Sr Staff Accountant

Fund: 607000

Telephone: 343-6914

Cost Pool (Cost Center / Name): 149001 / CAMA Depreciation

Services Provided: Provides capital project recovery and operating support for the computer assisted mass appraisal (CAMA) project.

Charge-Out Methodology: 100% to the Property Appraisal, Areawide Service Area.

Allocation Factor: Month-end automated calculation.



Municipality of Anchorage

Intragovernmental Charges Methodologies

Department: Human Resources

Contact: HR Sr Staff Accountant

Fund: 101000

Telephone: 343-4516

Cost Pool (Cost Center / Name): 181000 / Human Resources Administration

Services Provided: Provides administrative support to the department divisions within the department.

Charge-Out Methodology: Allocation of cost pool is based on the ratio of current year budgeted labor costs for each recipient cost center to total current year budgeted labor costs for all recipient cost centers.

Allocation Factor: Month-end automated calculation.



Municipality of Anchorage

Intragovernmental Charges Methodologies

Department: Human Resources

Contact: HR Sr Staff Accountant

Fund: 101000

Telephone: 343-4516

Cost Pool (Cost Center / Name): 184100 / Labor Relations

Services Provided: Provides labor relations and negotiation services and oversees Municipal training.

Charge-Out Methodology: Allocation of cost pool is based on the ratio of current year budgeted labor costs for each recipient cost center to total current year budgeted labor costs for all recipient cost centers. Central service allocating departments are omitted and thus the cost that would be assigned to them is allocated to the direct service departments receiving this service.

Allocation Factor: Month-end automated calculation.



Municipality of Anchorage

Intragovernmental Charges Methodologies

Department: Human Resources

Contact: HR Sr Staff Accountant

Fund: 101000

Telephone: 343-4516

Cost Pool (Cost Center / Name): 184500 / Employment

Services Provided: Provides employment recruitment and classification services, provides pay review, and manages employee records for all Municipal departments.

Charge-Out Methodology: Allocation of cost pool is based on the ratio of current year budgeted labor costs for each recipient cost center to total current year budgeted labor costs for all recipient cost centers. Central service allocating departments are omitted and thus the cost that would be assigned to them is allocated to the direct service departments receiving this service.

Allocation Factor: Month-end automated calculation.



Municipality of Anchorage

Intragovernmental Charges Methodologies

Department: Human Resources

Contact: HR Sr Staff Accountant

Fund: 101000

Telephone: 343-4516

Cost Pool (Cost Center / Name): 187100 / Benefits

Services Provided: Develops, maintains, and administers cost effective and competitive employee benefit programs. Responsible for health and wellness and retirement benefit administration.

Charge-Out Methodology: Allocation of cost pool is based on the ratio of current year budgeted labor costs for each recipient cost center to total current year budgeted labor costs for all recipient cost centers. Central service allocating departments are omitted and thus the cost that would be assigned to them is allocated to the direct service departments receiving this service.

Allocation Factor: Month-end automated calculation.



Municipality of Anchorage

Intragovernmental Charges Methodologies

Department: Community Development

Contact: Muni Mgr Admin Officer

Fund: 101000

Telephone: 343-4481

Cost Pool (Cost Center / Name): 510500 / OECD Administration

Services Provided: Provides oversight of the following departments: Development Services, Library, Parks & Recreation, Planning, and Real Estate and also provides administration of major Municipal facilities and museum.

Charge-Out Methodology: Allocation of cost pool is based on estimated time spent on each cost center in Community Development and each municipal department that reports to Community Development.

Allocation Factor: Month-end automated calculation.



Municipality of Anchorage

Intragovernmental Charges Methodologies

Department: Community Development

Contact: CD D&A P&P Director

Fund: 101000

Telephone: 343-6183

Cost Pool (Cost Center / Name): 510600 / CD Data & Analytics

Services Provided: Provides management of geographic information systems (GIS) data, information, and the associated analysis and metrics from the Geographic Data & Information Center (GDIC) managed by the Geographic Information Officer.

Charge-Out Methodology: Allocation of cost pool is based on current year budget categorized into GIS Licensing based on actual use and Baseline GIS Program based on budgeted employee counts. Department GIS support is currently managed through the GDIC vendor contracts or operational projects with direct department funding.

Allocation Factor: Month-end automated calculation.



Municipality of Anchorage

Intragovernmental Charges Methodologies

Department: Community Development

Contact: CD D&A P&P Director

Fund: 101000

Telephone: 343-6183

Cost Pool (Cost Center / Name): 510671 / IGC-OECD GIS Licensing

Services Provided: Use of Enterprise Licensing Agreement

Charge-Out Methodology: The cost of the ESRI Enterprise Licensing Agreement (ELA) is allocated to the departments based on the proportional use of licenses by departments including desktop software, named user logins, enterprise licenses and all other licensed ESRI products. Quarterly audits of software deployment and usage will be conducted by departments and coordinated by GDIC. Annual Memorandum of Understandings will be entered in with each department using any component of the ESRI ELA license to ensure access and caps as appropriate. Departments will receive a copy of the licensing counts a month prior to the submission of the annual budget and can request changes in licensing numbers at any point during the year until this time. After the report is submitted, these are the numbers that will be considered finalized and used to calculate the portion of the ESRI ELA for the coming year.

The division of cost will be recalculated annually for all departments. Department use of all ESRI licenses will be assigned costs based on a weighting system based on the following formula:

$\frac{\text{Dept. Licensing Cost}^*}{\text{Total Licensing Cost}^*} \times \frac{\text{ESRI ELA Annual Cost}}{\text{ESRI ELA Annual Cost}} = \text{Cost to Department}$
--

*Licensing cost will be based on deployment report and State of Alaska ESRI Master Purchase Agreement Price List

Allocation Factor: Month-end automated calculation.



Municipality of Anchorage

Intragovernmental Charges Methodologies

Department: Community Development

Contact: CD D&A P&P Director

Fund: 101000

Telephone: 343-6183

Cost Pool (Cost Center / Name): 510672 / IGC-OECD GIS Enterprise Program

Services Provided:

Charge-Out Methodology:

Allocation Factor: Month-end automated calculation.



Municipality of Anchorage

Intragovernmental Charges Methodologies

Department: Community Development

Contact: CD D&A P&P Director

Fund: 101000

Telephone: 343-6183

Cost Pool (Cost Center / Name): 510673 / IGC-OECD GIS Dept Support

Services Provided:

Charge-Out Methodology:

Allocation Factor: Month-end automated calculation.



Municipality of Anchorage

Intragovernmental Charges Methodologies

Department: Maintenance & Operations

Contact: Public Works Admin Manager

Fund: 101000

Telephone: 343-8191

Cost Pool (Cost Center / Name): 710500 / Facility Maintenance

Services Provided: Provides municipal facility maintenance services, with scheduling and prioritizing done via work order system and by issue type.

Charge-Out Methodology: Allocation of cost pool is based on ratio of prior year cost of each facility cost pool to total prior year cost of all facility cost pools.

Allocation Factor: Month-end automated calculation.



Municipality of Anchorage

Intragovernmental Charges Methodologies

Department: Maintenance & Operations

Contact: Public Works Admin Manager

Fund: 101000

Telephone: 343-8191

Cost Pool (Cost Center / Name): 710503 / Facilities Girdwood

Services Provided: Provides facility maintenance services for municipal facilities in the Girdwood Service Area. Scheduling and prioritizing done via work order system and by issue type.

Charge-Out Methodology: Allocation of cost pool is based on ratio of square footage use by department, to total square footage within this cost pool. Charged to all departments, including central service allocating departments that receive this service.

Allocation Factor: Month-end automated calculation.



Municipality of Anchorage

Intragovernmental Charges Methodologies

Department: Maintenance & Operations

Contact: Public Works Admin Manager

Fund: 101000

Telephone: 343-8191

Cost Pool (Cost Center / Name): 710506 / Facilities Eagle River Town Center

Services Provided: Provides facility maintenance services for municipal facilities in Eagle River, primarily the Eagle River Town Center located at 12001 Business Boulevard, Eagle River, AK 99577. Scheduling and prioritizing done via work order system and by issue type.

Charge-Out Methodology: Allocation of cost pool is based on ratio of square footage use by department, to total square footage within this cost pool. Charged to all departments, including central service allocating departments that receive this service.

Allocation Factor: Month-end automated calculation.



Municipality of Anchorage

Intragovernmental Charges Methodologies

Department: Maintenance & Operations

Contact: Public Works Admin Manager

Fund: 101000

Telephone: 343-8191

Cost Pool (Cost Center / Name): 710509 / Facilities Fire Stations

Services Provided: Provides facility maintenance services for municipal Fire Stations. Scheduling and prioritizing done via work order system and by issue type.

Charge-Out Methodology: Allocation of cost pool is based on ratio of square footage use by department, to total square footage within this cost pool. Charged to all departments, including central service allocating departments that receive this service.

Allocation Factor: Month-end automated calculation.



Municipality of Anchorage

Intragovernmental Charges Methodologies

Department: Maintenance & Operations

Contact: Public Works Admin Manager

Fund: 101000

Telephone: 343-8191

Cost Pool (Cost Center / Name): 710512 / Facilities Libraries

Services Provided: Provides facility maintenance services for municipal libraries. Scheduling and prioritizing done via work order system and by issue type.

Charge-Out Methodology: Allocation of cost pool is based on ratio of square footage use by department, to total square footage within this cost pool. Charged to all departments, including central service allocating departments that receive this service.

Allocation Factor: Month-end automated calculation.



Municipality of Anchorage

Intragovernmental Charges Methodologies

Department: Maintenance & Operations

Contact: Public Works Admin Manager

Fund: 101000

Telephone: 343-8191

Cost Pool (Cost Center / Name): 710515 / Facilities Fac Maint Whse

Services Provided: Provides facility maintenance services for miscellaneous municipal facilities primarily in the Areawide Service Area. Scheduling and prioritizing done via work order system and by issue type.

Charge-Out Methodology: Allocation of cost pool is based on ratio of square footage use by department, to total square footage within this cost pool. Charged to all departments, including central service allocating departments that receive this service.

Allocation Factor: Month-end automated calculation.



Municipality of Anchorage

Intragovernmental Charges Methodologies

Department: Maintenance & Operations

Contact: Public Works Admin Manager

Fund: 101000

Telephone: 343-8191

Cost Pool (Cost Center / Name): 710518 / Facilities Traffic

Services Provided: Provides facility maintenance services for municipal facilities used by the Traffic Department. Scheduling and prioritizing done via work order system and by issue type.

Charge-Out Methodology: Allocation of cost pool is based on ratio of square footage use by department, to total square footage within this cost pool. Charged to all departments, including central service allocating departments that receive this service.

Allocation Factor: Month-end automated calculation.



Municipality of Anchorage

Intragovernmental Charges Methodologies

Department: Maintenance & Operations

Contact: Public Works Admin Manager

Fund: 101000

Telephone: 343-8191

Cost Pool (Cost Center / Name): 710521 / Facilities RES/Historical Property

Services Provided: Provides facility maintenance services for municipal facilities used by the Real Estate Services (RES) / Historical Properties. Scheduling and prioritizing done via work order system and by issue type.

Charge-Out Methodology: Allocation of cost pool is based on ratio of square footage use by department, to total square footage within this cost pool. Charged to all departments, including central service allocating departments that receive this service.

Allocation Factor: Month-end automated calculation.



Municipality of Anchorage

Intragovernmental Charges Methodologies

Department: Maintenance & Operations

Contact: Public Works Admin Manager

Fund: 101000

Telephone: 343-8191

Cost Pool (Cost Center / Name): 710524 / Facilities Areawide Parks & Rec

Services Provided: Provides facility maintenance services for municipal facilities primarily in the Parks & Recreation Service Area. Scheduling and prioritizing done via work order system and by issue type.

Charge-Out Methodology: Allocation of cost pool is based on ratio of square footage use by department, to total square footage within this cost pool. Charged to all departments, including central service allocating departments that receive this service.

Allocation Factor: Month-end automated calculation.



Municipality of Anchorage

Intragovernmental Charges Methodologies

Department: Maintenance & Operations

Contact: Public Works Admin Manager

Fund: 101000

Telephone: 343-8191

Cost Pool (Cost Center / Name): 710527 / Facility Maintenance AHD Service

Services Provided: Provides facility maintenance services for municipal facilities used by the Anchorage Health Department within. Scheduling and prioritizing done via work order system and by issue type.

Charge-Out Methodology: Allocation of cost pool is based on ratio of square footage use by department, to total square footage within this cost pool. Charged to all departments, including central service allocating departments that receive this service.

Allocation Factor: Month-end automated calculation.



Municipality of Anchorage

Intragovernmental Charges Methodologies

Department: Maintenance & Operations

Contact: Public Works Admin Manager

Fund: 101000

Telephone: 343-8191

Cost Pool (Cost Center / Name): 710530 / Facilities ARDSA

Services Provided: Provides facility maintenance services for municipal facilities within the Anchorage Roads & Drainage Service Area. Scheduling and prioritizing done via work order system and by issue type.

Charge-Out Methodology: Allocation of cost pool is based on ratio of square footage use by department, to total square footage within this cost pool. Charged to all departments, including central service allocating departments that receive this service.

Allocation Factor: Month-end automated calculation.



Municipality of Anchorage

Intragovernmental Charges Methodologies

Department: Maintenance & Operations

Contact: Public Works Admin Manager

Fund: 101000

Telephone: 343-8191

Cost Pool (Cost Center / Name): 710533 / Facilities Transit/Centers/Park & Rides

Services Provided: Provides facility maintenance services for municipal facilities used for Public Transportation, including transit center and Park & Ride. Scheduling and prioritizing done via work order system and by issue type.

Charge-Out Methodology: Allocation of cost pool is based on ratio of square footage use by department, to total square footage within this cost pool. Charged to all departments, including central service allocating departments that receive this service.

Allocation Factor: Month-end automated calculation.



Municipality of Anchorage

Intragovernmental Charges Methodologies

Department: Maintenance & Operations

Contact: Public Works Admin Manager

Fund: 101000

Telephone: 343-8191

Cost Pool (Cost Center / Name): 710536 / Facilities Fleet Maint

Services Provided: Provides facility maintenance services for municipal facilities used by Fleet Maintenance. Scheduling and prioritizing done via work order system and by issue type.

Charge-Out Methodology: Allocation of cost pool is based on ratio of square footage use by department, to total square footage within this cost pool. Charged to all departments, including central service allocating departments that receive this service.

Allocation Factor: Month-end automated calculation.



Municipality of Anchorage

Intragovernmental Charges Methodologies

Department: Maintenance & Operations

Contact: Public Works Admin Manager

Fund: 101000

Telephone: 343-8191

Cost Pool (Cost Center / Name): 710539 / Facilities Police / Substations

Services Provided: Provides facility maintenance services for municipal facilities used primarily by the Police Department, including police substations. Scheduling and prioritizing done via work order system and by issue type.

Charge-Out Methodology: Allocation of cost pool is based on ratio of square footage use by department, to total square footage within this cost pool. Charged to all departments, including central service allocating departments that receive this service.

Allocation Factor: Month-end automated calculation.



Municipality of Anchorage

Intragovernmental Charges Methodologies

Department: Maintenance & Operations

Contact: Public Works Admin Manager

Fund: 101000

Telephone: 343-8191

Cost Pool (Cost Center / Name): 710542 / Facilities Eagle River Parks & Rec

Services Provided: Provides facility maintenance services for municipal facilities used by the Eagle River Parks & Recreation Service Area. Scheduling and prioritizing done via work order system and by issue type.

Charge-Out Methodology: Allocation of cost pool is based on ratio of square footage use by department, to total square footage within this cost pool. Charged to all departments, including central service allocating departments that receive this service.

Allocation Factor: Month-end automated calculation.



Municipality of Anchorage

Intragovernmental Charges Methodologies

Department: Maintenance & Operations

Contact: Public Works Admin Manager

Fund: 101000

Telephone: 343-8191

Cost Pool (Cost Center / Name): 710545 / Facilities City Hall

Services Provided: Provides facility maintenance services for municipal facilities in City Hall located at 632 West Sixth Avenue, Anchorage, AK 99501. Scheduling and prioritizing done via work order system and by issue type.

Charge-Out Methodology: Allocation of cost pool is based on ratio of square footage use by department, to total square footage within this cost pool. Charged to all departments, including central service allocating departments that receive this service.

Allocation Factor: Month-end automated calculation.



Municipality of Anchorage

Intragovernmental Charges Methodologies

Department: Maintenance & Operations

Contact: Public Works Admin Manager

Fund: 101000

Telephone: 343-8191

Cost Pool (Cost Center / Name): 710548 / Facilities Eagle River Parks & Rec Chal

Services Provided: Provides facility maintenance services for the municipal facility Ski Chalet at Beach Lake in the Eagle River Parks & Recreation Service Area. Scheduling and prioritizing done via work order system and by issue type.

Charge-Out Methodology: Allocation of cost pool is based on ratio of square footage use by department, to total square footage within this cost pool. Charged to all departments, including central service allocating departments that receive this service.

Allocation Factor: Month-end automated calculation.



Municipality of Anchorage

Intragovernmental Charges Methodologies

Department: Maintenance & Operations

Contact: Public Works Admin Manager

Fund: 101000

Telephone: 343-8191

Cost Pool (Cost Center / Name): 710551 / Facilities Eagle River Parks & Rec Pools

Services Provided: Provides facility maintenance services for the municipal facility Chugiak High School Pool in the Eagle River Parks & Recreation Service Area. Scheduling and prioritizing done via work order system and by issue type.

Charge-Out Methodology: Allocation of cost pool is based on ratio of square footage use by department, to total square footage within this cost pool. Charged to all departments, including central service allocating departments that receive this service.

Allocation Factor: Month-end automated calculation.



Municipality of Anchorage

Intragovernmental Charges Methodologies

Department: Maintenance & Operations

Contact: Public Works Admin Manager

Fund: 101000

Telephone: 343-8191

Cost Pool (Cost Center / Name): 710554 / Facilities Areawide Parks & Rec Pools

Services Provided: Provides facility maintenance services for municipal pools in the Anchorage Parks & Recreation Service Area. Scheduling and prioritizing done via work order system and by issue type.

Charge-Out Methodology: Allocation of cost pool is based on ratio of square footage use by department, to total square footage within this cost pool. Charged to all departments, including central service allocating departments that receive this service.

Allocation Factor: Month-end automated calculation.



Municipality of Anchorage

Intragovernmental Charges Methodologies

Department: Maintenance & Operations

Contact: Public Works Admin Manager

Fund: 101000

Telephone: 343-8191

Cost Pool (Cost Center / Name): 710557 / Facilities Heritage Land Bank

Services Provided: Provides facility maintenance services for municipal facilities in the Heritage Land Bank Service Area. Scheduling and prioritizing done via work order system and by issue type.

Charge-Out Methodology: Allocation of cost pool is based on ratio of square footage use by department, to total square footage within this cost pool. Charged to all departments, including central service allocating departments that receive this service.

Allocation Factor: Month-end automated calculation.



Municipality of Anchorage

Intragovernmental Charges Methodologies

Department: Maintenance & Operations

Contact: Public Works Admin Manager

Fund: 101000

Telephone: 343-8191

Cost Pool (Cost Center / Name): 710560 / Facilities Chugiak Fire Service Area

Services Provided: Provides facility maintenance services for municipal facilities in the Chugiak Fire Service Area. Scheduling and prioritizing done via work order system and by issue type.

Charge-Out Methodology: Allocation of cost pool is based on ratio of square footage use by department, to total square footage within this cost pool. Charged to all departments, including central service allocating departments that receive this service.

Allocation Factor: Month-end automated calculation.



Municipality of Anchorage

Intragovernmental Charges Methodologies

Department: Maintenance & Operations

Contact: Public Works Admin Manager

Fund: 101000

Telephone: 343-8191

Cost Pool (Cost Center / Name): 710562 / Facilities-CBERRRSA

Services Provided: Provides facility maintenance services for municipal facilities in the Chugiak Birchwood Eagle River Rural Road Service Area (CBERRRSA). Scheduling and prioritizing done via work order system and by issue type.

Charge-Out Methodology: Allocation of cost pool is based on ratio of square footage use by department, to total square footage within this cost pool. Charged to all departments, including central service allocating departments that receive this service.

Allocation Factor: Month-end automated calculation.



Municipality of Anchorage

Intragovernmental Charges Methodologies

Department: Maintenance & Operations

Contact: Public Works Admin Manager

Fund: 101000

Telephone: 343-8191

Cost Pool (Cost Center / Name): 710563 / Facilities NC HJ Mac Mem Ctr

Services Provided: Provides facility maintenance services for the municipal sports facility Harry J. McDonald Memorial Center located at 13701 Harry McDonald Road, Eagle River, AK 99577. Scheduling and prioritizing done via work order system and by issue type. Does not receive allocation from the Facility Maintenance Administration pool.

Charge-Out Methodology: Allocation of cost pool is based on ratio of square footage use by department, to total square footage within this cost pool. Charged to all departments, including central service allocating departments that receive this service.

Allocation Factor: Month-end automated calculation.



Municipality of Anchorage

Intragovernmental Charges Methodologies

Department: Maintenance & Operations

Contact: Public Works Admin Manager

Fund: 101000

Telephone: 343-8191

Cost Pool (Cost Center / Name): 710566 / Facilities NC Sullivan Arena

Services Provided: Provides facility maintenance services for the municipal entertainment facility Sullivan Arena located at 1600 Gambell Street, Anchorage, AK 99501. Scheduling and prioritizing done via work order system and by issue type. Does not receive allocation from the Facility Maintenance Administration pool.

Charge-Out Methodology: Allocation of cost pool is based on ratio of square footage use by department, to total square footage within this cost pool. Charged to all departments, including central service allocating departments that receive this service.

Allocation Factor: Month-end automated calculation.



Municipality of Anchorage

Intragovernmental Charges Methodologies

Department: Maintenance & Operations

Contact: Public Works Admin Manager

Fund: 101000

Telephone: 343-8191

Cost Pool (Cost Center / Name): 710569 / Facilities NC Egan Center

Services Provided: Provides facility maintenance services for the municipal convention facility William A. Egan Civic & Convention Center located at 555 West Fifth Avenue, Anchorage, AK 99501. Scheduling and prioritizing done via work order system and by issue type. Does not receive allocation from the Facility Maintenance Administration pool.

Charge-Out Methodology: Allocation of cost pool is based on ratio of square footage use by department, to total square footage within this cost pool. Charged to all departments, including central service allocating departments that receive this service.

Allocation Factor: Month-end automated calculation.



Municipality of Anchorage

Intragovernmental Charges Methodologies

Department: Maintenance & Operations

Contact: Public Works Admin Manager

Fund: 101000

Telephone: 343-8191

Cost Pool (Cost Center / Name): 710572 / Facilities NC Dena'ina Center

Services Provided: Provides facility maintenance services for the municipal convention facility Dena'ina Civic & Convention Center located at 600 West Seventh Avenue, Anchorage, AK 99501. Scheduling and prioritizing done via work order system and by issue type. Does not receive allocation from the Facility Maintenance Administration pool.

Charge-Out Methodology: Allocation of cost pool is based on ratio of square footage use by department, to total square footage within this cost pool. Charged to all departments, including central service allocating departments that receive this service.

Allocation Factor: Month-end automated calculation.



Municipality of Anchorage

Intragovernmental Charges Methodologies

Department: Maintenance & Operations

Contact: Public Works Admin Manager

Fund: 101000

Telephone: 343-8191

Cost Pool (Cost Center / Name): 710575 / Facilities NC Performing Arts Center

Services Provided: Provides facility maintenance services for the municipal facility Alaska Center for the Performing Arts (PAC) located at 621 West Sixth Avenue, Anchorage, AK 99501. Scheduling and prioritizing done via work order system and by issue type. Does not receive allocation from the Facility Maintenance Administration pool.

Charge-Out Methodology: Allocation of cost pool is based on ratio of square footage use by department, to total square footage within this cost pool. Charged to all departments, including central service allocating departments that receive this service.

Allocation Factor: Month-end automated calculation.



Municipality of Anchorage

Intragovernmental Charges Methodologies

Department: Maintenance & Operations

Contact: Public Works Admin Manager

Fund: 101000

Telephone: 343-8191

Cost Pool (Cost Center / Name): 710581 / Facilities NC Anchorage Museum

Services Provided: Provides facility maintenance services for the municipal Anchorage Museum located at 625 C Street, Anchorage, AK 99501. Scheduling and prioritizing done via work order system and by issue type. Does not receive allocation from the Facility Maintenance Administration pool.

Charge-Out Methodology: Allocation of cost pool is based on ratio of square footage use by department, to total square footage within this cost pool. Charged to all departments, including central service allocating departments that receive this service.

Allocation Factor: Month-end automated calculation.



Municipality of Anchorage

Intragovernmental Charges Methodologies

Department: Maintenance & Operations

Contact: Public Works Admin Manager

Fund: 101000

Telephone: 343-8191

Cost Pool (Cost Center / Name): 710583 / Facilities Permit Center

Services Provided: Provides facility maintenance services for municipal facilities in the Anchorage Permit & Development Center located at 4700 Elmore Road, Anchorage, AK 99507. Scheduling and prioritizing done via work order system and by issue type.

Charge-Out Methodology: Allocation of cost pool is based on ratio of square footage use by department, to total square footage within this cost pool. Charged to all departments, including central service allocating departments that receive this service.

Allocation Factor: Month-end automated calculation.



Municipality of Anchorage

Intragovernmental Charges Methodologies

Department: Maintenance & Operations

Contact: Public Works Admin Manager

Fund: 101000

Telephone: 343-8191

Cost Pool (Cost Center / Name): 710800 / Facility Capital Improvements

Services Provided: Provides project management, design, and construction services for municipal general government facility upgrades, improvements, and new construction.

Charge-Out Methodology: Allocation of cost pool is based on ratio of square footage for the department to total facility square footage municipality wide.

Allocation Factor: Month-end automated calculation.