

Municipality of Anchorage

- Alaska –

2024

Public Transportation
Department
Indirect Cost Proposal



Dave Bronson
Mayor

Sharon Lechner
Director, Office of Management & Budget

Public Transportation Department
2024
INDIRECT COST PROPOSAL

Table of Contents

GENERAL INFORMATION

Certification of Indirect Costs.....	1
Introduction to Indirect Cost Proposal.....	2
Organizational Chart at 01/01/2022.....	3

INDIRECT COST RATE COMPUTATION

Public Transportation Department Rate.....	4
--	---

2022 FINANCIAL INFORMATION

Summary of Billing Units (Including Adjustments).....	5
Detail of Direct Expenditures.....	6
Detail of IGC Expenditures (Direct and Indirect).....	13
Detail of Billings (IGC) and Program Revenues.....	15
Detail of Charges from Central Services Plan IGCs.....	16
Detail of Non-Allowable Expense Adj - Within Unit.....	17

INTRAGOVERNMENTAL CHARGE-OUT METHODOLOGIES

The Public Transportation department does not allocate out costs

Certificate of Indirect Costs

This is to certify that I have reviewed the indirect cost proposal submitted herewith and to the best of my knowledge and belief:

- (1) All costs included in this proposal to establish billing or final indirect cost rates for the period of January 1, 2024 through December 31, 2024 are allowable in accordance with the requirements of this Part and the Federal award(s) to which they apply.¹ Unallowable costs have been adjusted for in allocating costs as indicated in the cost allocation plan.
- (2) All costs included in this proposal are properly allocable to Federal awards on the basis of a beneficial or a causal relationship between the expenses incurred and the agreements to which they are allocated in accordance with applicable requirements. Further, the same costs that have been treated as indirect costs have not been claimed as direct costs. Similar types of costs have been accounted for consistently.

I declare the foregoing is true and correct

Municipality of Anchorage
Anchorage, Alaska

Wilks Consulting Services, Inc.
Anchorage, Alaska

(Signature)

(Signature)

Sharon Lechner
Director, Office of Management & Budget
Date of Execution: _____

William J. Wilks
Preparer
Date of Execution: _____

¹ Office of Management and Budget, 2CFR Chapter 1 and Chapter 11, Parts 200, 215, 220, 225, and 230. Uniform Administration Requirements, Cost Principles, and Audit Requirements for Federal Awards.

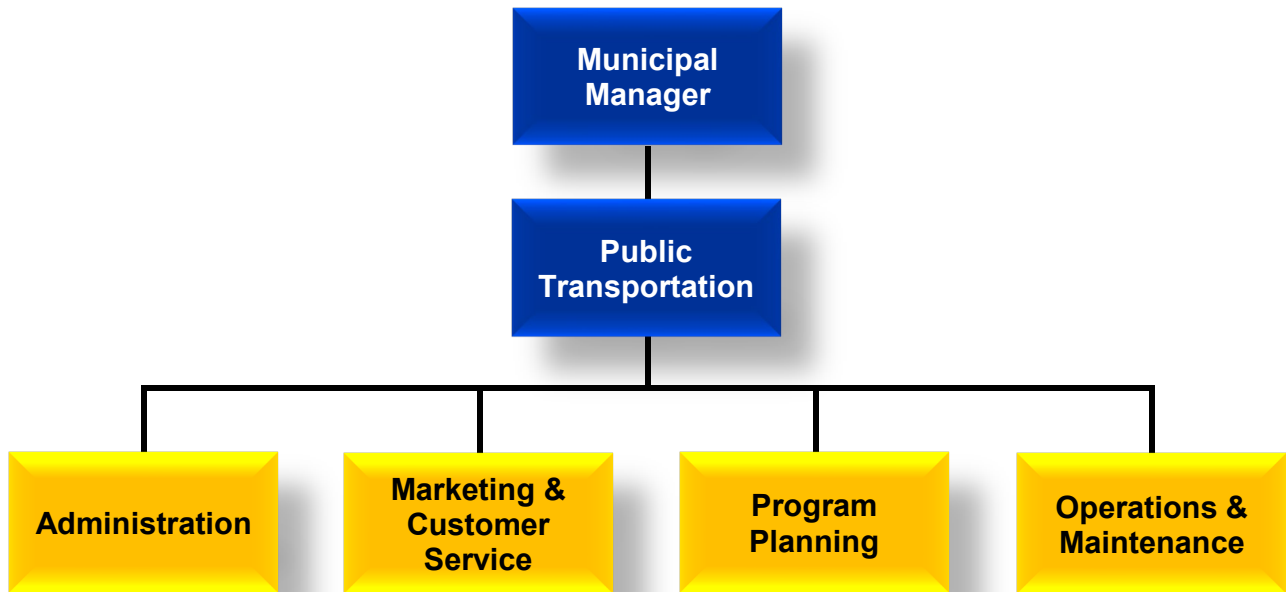
Introduction to Indirect Cost Rate Proposal

This document presents the Indirect Cost Rate Proposal for the Municipality of Anchorage for the period January 1, 2024 through December 31, 2024. This proposal supports our department's claim to indirect costs on grants and contracts with Federal and State government agencies. Costs presented in this proposal are based on calendar year 2022 (UNAUDITED) actual expenses and organizational structure.

One indirect cost rate is developed for each department that charges indirect costs to grants. This percentage of indirect costs is computed based on total direct costs for the department.

Costs included in the indirect cost rates include Intragovernmental Charges (IGCs) from department and division administrative units. Indirect costs also include a share of the allocated central service units' costs as identified in the Municipality of Anchorage's 2024 Central Services Cost Allocation Plan. In addition, IGCs from central service units, department and division charging units have been adjusted to subtract costs that are unallowable according to guidelines presented in the Circular FTA C 5010.1E and the Office of Management and Budget guidance on Administrative Requirements, Cost Principles, and Audit Requirements for Federal Awards released December 26, 2013.

Public Transportation



Indirect Cost Rate Computation



**Public Transportation
Department**

Cost Item	Amount
Actual Indirects	\$ 4,744,481
Allocation of Net Costs (over/underbilled costs) as Indirects from:	
None	-
Total Indirects	\$ 4,744,481
Base (Allowable Net Directs)	\$ 35,647,507
2024 Rate	13.3%



**Summary of Billing Units (Including Adjustments)
Municipality of Anchorage
Indirect Cost Rate Proposal
Summary of Costs
Using Results as of December 31, 2022**

**Public Transportation
Department**

Fund	Cost Center	Description	Direct Expenditures	IGC Expenditures (Direct and Indirect)	Total Direct and IGC Expenditures	Billings (IGC) and Program Revenues	Net Costs	Adjustment for Billings to Non Chargeout Units	Net Costs, After Adj	Non-Allowable Expense Adj			Within Unit	Allowable Net Costs, After Adj	Allowable IGCs Treated as Indirect Costs (Actual Indirects)	Allowable Net Directs	
										Charges from Central Services Plan IGCs	% Not Allowable (from CSP)	From Central Services Plan					
101000	611000	Transit Administration	1,516,271	4,396,203	5,912,474	(373)	5,912,101	373	5,912,474	3,855,205	3.82%	147,449	701,597	5,063,428	4,084,773	978,655	
101000	613000	Marketing & Customer Service	369,246	20,416	389,662	(496,868)	(107,206)	496,868	389,662	-	3.82%	-	-	389,662	-	389,662	
101000	614000	Transit Planning	347,972	10,582	358,554	-	358,554	-	358,554	-	3.82%	-	122,738	235,816	-	235,816	
101000	615000	Para Transit Services	3,897,445	9,285	3,906,730	-	3,906,730	-	3,906,730	-	3.82%	-	145,310	3,761,420	-	3,761,420	
101000	622000	Transit Operations	14,908,913	1,164,098	16,073,011	(3,125,418)	12,947,593	3,125,418	16,073,011	241,270	3.82%	9,228	170,469	15,893,315	232,042	15,661,273	
101000	630000	Vehicle Maintenance	5,154,131	259,773	5,413,904	(3,097,147)	2,316,757	3,097,147	5,413,904	-	3.82%	-	203,081	5,210,823	-	5,210,823	
101000	640000	Non-Vehicle Maintenance	368,147	(73,484)	294,663	-	294,663	-	294,663	-	3.82%	-	147,608	147,055	-	147,055	
231800	614000	Transit Planning	59,012	26,684	85,697	-	85,697	-	85,697	-	3.82%	-	-	85,697	21,943	63,753	
231800	615000	Para Transit Services	93,750	5,498	99,248	(67,998)	31,250	67,998	99,248	-	3.82%	-	-	99,248	5,288	93,960	
231900	613000	Marketing & Customer Service	795,769	23,625	819,394	(819,394)	-	819,394	819,394	-	3.82%	-	80,336	739,058	-	739,058	
231900	614000	Transit Planning	235,708	15,634	251,342	(251,342)	(0)	251,342	251,342	-	3.82%	-	-	251,342	-	251,342	
231900	615000	Para Transit Services	1,111,257	8,069	1,119,326	(1,119,326)	-	1,119,326	1,119,326	-	3.82%	-	-	1,119,326	7,760	1,111,566	
241800	615000	Para Transit Services	27,152	11,055	38,208	(77,312)	(39,104)	77,312	38,208	-	3.82%	-	-	38,208	8,884	29,324	
241900	615000	Para Transit Services	137,729	9,266	146,995	(146,995)	-	146,995	146,995	-	3.82%	-	-	146,995	-	146,995	
241900	622000	Transit Operations	2,513,609	66,077	2,579,686	(2,530,241)	49,445	2,530,241	2,579,686	-	3.82%	-	59,803	2,519,883	-	2,519,883	
241900	630000	Vehicle Maintenance	3,108,792	-	3,108,792	(3,291,476)	(182,684)	3,291,476	3,108,792	-	3.82%	-	-	3,108,792	-	3,108,792	
241900	640000	Non-Vehicle Maintenance	414,123	16,892	431,015	(303,721)	127,293	303,721	431,015	106	3.82%	4	-	431,010	102	430,908	
261010	640000	Non-Vehicle Maintenance	15,698	-	15,698	-	15,698	-	15,698	-	3.82%	-	15,698	-	-	-	
485100	614000	Transit Planning	35,324	-	35,324	5,000	40,324	(5,000)	35,324	-	3.82%	-	30,070	5,254	-	5,254	
485100	615000	Para Transit Services	218,123	-	218,123	(46,083)	172,040	46,083	218,123	-	3.82%	-	212,649	5,474	-	5,474	
485100	630000	Vehicle Maintenance	826,277	-	826,277	(460,524)	365,753	460,524	826,277	-	3.82%	-	769,655	56,622	-	56,622	
485100	640000	Non-Vehicle Maintenance	522,007	24,052	546,059	(1,943,563)	(1,397,504)	1,943,563	546,059	-	3.82%	-	375,323	170,736	23,082	147,654	
485800	613000	Marketing & Customer Service	-	-	-	20,018	20,018	(20,018)	-	-	3.82%	-	-	-	-	-	
485800	614000	Transit Planning	469	-	469	(4,276)	(3,807)	4,276	469	-	3.82%	-	-	469	-	469	
485800	615000	Para Transit Services	14,314	-	14,314	25,382	39,696	(25,382)	14,314	-	3.82%	-	14,314	-	-	-	
485800	622000	Transit Operations	-	-	-	190,436	190,436	(190,436)	-	-	3.82%	-	-	-	-	-	
485800	630000	Vehicle Maintenance	462,994	318,140	781,134	(488,838)	292,296	488,838	781,134	-	3.82%	-	462,709	318,425	305,972	12,453	
485800	640000	Non-Vehicle Maintenance	9,569	56,608	66,177	(293,916)	(227,740)	293,916	66,177	-	3.82%	-	1,167	65,009	54,443	10,567	
485900	614000	Transit Planning	-	-	-	110	110	(110)	-	-	3.82%	-	-	-	-	-	
485900	615000	Para Transit Services	1,441,940	-	1,441,940	(59,798)	1,382,141	59,798	1,441,940	-	3.82%	-	1,365,363	76,576	-	76,576	
485900	630000	Vehicle Maintenance	3,960,898	-	3,960,898	(3,056,395)	904,503	3,056,395	3,960,898	-	3.82%	-	3,664,149	296,749	-	296,749	
485900	640000	Non-Vehicle Maintenance	1,380,433	1,328	1,381,761	(3,668,515)	(2,286,754)	3,668,515	1,381,761	199	3.82%	8	-	1,226,158	155,596	191	155,404
Total Public Transportation Depart			43,947,071	6,369,801	50,316,872	(25,108,573)	25,208,299	25,108,573	50,316,872	4,096,781		156,689	9,768,196	40,391,988	4,744,481	35,647,507	

CSP Cat.	Department	Cost Center Description	Fiscal		Cost		Actuals
			Year	Fund	Center	Acct	
	Public Transportation	Transit Administration	2022	101000	611000	501010	396,532.38
	Public Transportation	Transit Administration	2022	101000	611000	501020	13,528.22
	Public Transportation	Transit Administration	2022	101000	611000	501040	68,982.23
	Public Transportation	Transit Administration	2022	101000	611000	501080	103,106.28
	Public Transportation	Transit Administration	2022	101000	611000	501090	204.00
	Public Transportation	Transit Administration	2022	101000	611000	501100	127,363.50
	Public Transportation	Transit Administration	2022	101000	611000	501105	35,869.52
	Public Transportation	Transit Administration	2022	101000	611000	501115	118.80
	Public Transportation	Transit Administration	2022	101000	611000	501130	959.92
	Public Transportation	Transit Administration	2022	101000	611000	501140	610.31
	Public Transportation	Transit Administration	2022	101000	611000	511000	(731.48)
	Public Transportation	Transit Administration	2022	101000	611000	511010	559.70
	Public Transportation	Transit Administration	2022	101000	611000	511080	8.95
	Public Transportation	Transit Administration	2022	101000	611000	511100	1,079.75
	Public Transportation	Transit Administration	2022	101000	611000	511140	5.00
	Public Transportation	Transit Administration	2022	101000	611000	520080	920.00
	Public Transportation	Transit Administration	2022	101000	611000	530360	730.80
	Public Transportation	Transit Administration	2022	101000	611000	530380	39,114.86
	Public Transportation	Transit Administration	2022	101000	611000	540040	2,829.00
	Public Transportation	Transit Administration	2022	101000	611000	540170	6,965.67
	Public Transportation	Transit Administration	2022	101000	611000	540271	1,096.32
	Public Transportation	Transit Administration	2022	101000	611000	540280	25,008.00
	Public Transportation	Transit Administration	2022	101000	611000	540590	10,570.87
	Public Transportation	Transit Administration	2022	101000	611000	540650	39,880.50
	Public Transportation	Transit Administration	2022	101000	611000	550010	22,564.55
	Public Transportation	Transit Administration	2022	101000	611000	550080	24,347.26
	Public Transportation	Transit Administration	2022	101000	611000	580010	447,711.98
	Public Transportation	Transit Administration	2022	101000	611000	580020	146,331.22
	Public Transportation	Transit Administration	2022	101000	611000	580030	2.85
	Public Transportation	Marketing & Customer Service	2022	101000	613000	501010	172,584.67
	Public Transportation	Marketing & Customer Service	2022	101000	613000	501020	3,332.69
	Public Transportation	Marketing & Customer Service	2022	101000	613000	501040	13,689.47
	Public Transportation	Marketing & Customer Service	2022	101000	613000	501080	41,028.60
	Public Transportation	Marketing & Customer Service	2022	101000	613000	501090	156.40
	Public Transportation	Marketing & Customer Service	2022	101000	613000	501100	97,447.50
	Public Transportation	Marketing & Customer Service	2022	101000	613000	501105	14,048.90
	Public Transportation	Marketing & Customer Service	2022	101000	613000	501115	91.08
	Public Transportation	Marketing & Customer Service	2022	101000	613000	501130	376.58
	Public Transportation	Marketing & Customer Service	2022	101000	613000	501140	251.00
	Public Transportation	Marketing & Customer Service	2022	101000	613000	511000	2,199.33
	Public Transportation	Marketing & Customer Service	2022	101000	613000	511010	1,669.43
	Public Transportation	Marketing & Customer Service	2022	101000	613000	530060	26.00
	Public Transportation	Marketing & Customer Service	2022	101000	613000	530360	1,934.60
	Public Transportation	Marketing & Customer Service	2022	101000	613000	530380	70.00
	Public Transportation	Marketing & Customer Service	2022	101000	613000	540160	12,800.00
	Public Transportation	Marketing & Customer Service	2022	101000	613000	540242	689.50
	Public Transportation	Marketing & Customer Service	2022	101000	613000	590200	6,850.00
	Public Transportation	Transit Planning	2022	101000	614000	501010	73,257.03
	Public Transportation	Transit Planning	2022	101000	614000	501020	839.40
	Public Transportation	Transit Planning	2022	101000	614000	501040	22,357.84
	Public Transportation	Transit Planning	2022	101000	614000	501080	21,437.93
	Public Transportation	Transit Planning	2022	101000	614000	501090	50.32
	Public Transportation	Transit Planning	2022	101000	614000	501100	36,287.97
	Public Transportation	Transit Planning	2022	101000	614000	501105	6,954.12
	Public Transportation	Transit Planning	2022	101000	614000	501115	32.13
	Public Transportation	Transit Planning	2022	101000	614000	501130	189.67
	Public Transportation	Transit Planning	2022	101000	614000	501140	135.73
	Public Transportation	Transit Planning	2022	101000	614000	511000	186.24
	Public Transportation	Transit Planning	2022	101000	614000	511010	416.19

CSP Cat.	Department	Cost Center Description	Fiscal		Cost		Actuals
			Year	Fund	Center	Acct	
	Public Transportation	Transit Planning	2022	101000	614000	511080	35.35
	Public Transportation	Transit Planning	2022	101000	614000	520050	74.99
	Public Transportation	Transit Planning	2022	101000	614000	520060	603.21
	Public Transportation	Transit Planning	2022	101000	614000	520070	384.00
	Public Transportation	Transit Planning	2022	101000	614000	530060	39.00
	Public Transportation	Transit Planning	2022	101000	614000	530360	730.80
	Public Transportation	Transit Planning	2022	101000	614000	530380	1,919.44
	Public Transportation	Transit Planning	2022	101000	614000	540040	125.00
	Public Transportation	Transit Planning	2022	101000	614000	540150	595.00
	Public Transportation	Transit Planning	2022	101000	614000	540170	4,159.36
	Public Transportation	Transit Planning	2022	101000	614000	540200	51,519.40
	Public Transportation	Transit Planning	2022	101000	614000	540271	3,499.00
	Public Transportation	Transit Planning	2022	101000	614000	580530	122,143.06
	Public Transportation	Para Transit Services	2022	101000	615000	501010	39,248.78
	Public Transportation	Para Transit Services	2022	101000	615000	501040	18,608.99
	Public Transportation	Para Transit Services	2022	101000	615000	501080	10,928.12
	Public Transportation	Para Transit Services	2022	101000	615000	501090	23.80
	Public Transportation	Para Transit Services	2022	101000	615000	501100	14,987.00
	Public Transportation	Para Transit Services	2022	101000	615000	501105	3,687.33
	Public Transportation	Para Transit Services	2022	101000	615000	501115	13.86
	Public Transportation	Para Transit Services	2022	101000	615000	501130	98.64
	Public Transportation	Para Transit Services	2022	101000	615000	501140	67.67
	Public Transportation	Para Transit Services	2022	101000	615000	511000	1,689.96
	Public Transportation	Para Transit Services	2022	101000	615000	511010	290.36
	Public Transportation	Para Transit Services	2022	101000	615000	511130	437.58
	Public Transportation	Para Transit Services	2022	101000	615000	511170	512,493.10
	Public Transportation	Para Transit Services	2022	101000	615000	511200	899.00
	Public Transportation	Para Transit Services	2022	101000	615000	530060	32.75
	Public Transportation	Para Transit Services	2022	101000	615000	530360	1,526.60
	Public Transportation	Para Transit Services	2022	101000	615000	530380	3,118,076.37
	Public Transportation	Para Transit Services	2022	101000	615000	540040	200.00
	Public Transportation	Para Transit Services	2022	101000	615000	540170	10,259.36
	Public Transportation	Para Transit Services	2022	101000	615000	540200	16,613.78
	Public Transportation	Para Transit Services	2022	101000	615000	540320	594.00
	Public Transportation	Para Transit Services	2022	101000	615000	540640	31.17
	Public Transportation	Para Transit Services	2022	101000	615000	550010	1,326.73
	Public Transportation	Para Transit Services	2022	101000	615000	580530	145,310.00
	Public Transportation	Transit Operations	2022	101000	622000	501010	5,840,891.44
	Public Transportation	Transit Operations	2022	101000	622000	501012	(1,177.74)
	Public Transportation	Transit Operations	2022	101000	622000	501020	1,353,813.23
	Public Transportation	Transit Operations	2022	101000	622000	501040	811,799.22
	Public Transportation	Transit Operations	2022	101000	622000	501080	1,867,843.93
	Public Transportation	Transit Operations	2022	101000	622000	501090	4,445.50
	Public Transportation	Transit Operations	2022	101000	622000	501100	2,602,373.00
	Public Transportation	Transit Operations	2022	101000	622000	501105	644,588.46
	Public Transportation	Transit Operations	2022	101000	622000	501115	2,590.83
	Public Transportation	Transit Operations	2022	101000	622000	501130	17,021.64
	Public Transportation	Transit Operations	2022	101000	622000	501140	9,414.28
	Public Transportation	Transit Operations	2022	101000	622000	501240	128,024.53
	Public Transportation	Transit Operations	2022	101000	622000	511000	2,050.61
	Public Transportation	Transit Operations	2022	101000	622000	511010	1,713.99
	Public Transportation	Transit Operations	2022	101000	622000	511090	1,360.94
	Public Transportation	Transit Operations	2022	101000	622000	511140	12,802.06
	Public Transportation	Transit Operations	2022	101000	622000	511170	1,224,331.91
	Public Transportation	Transit Operations	2022	101000	622000	530020	76,231.49
	Public Transportation	Transit Operations	2022	101000	622000	530060	124.10
	Public Transportation	Transit Operations	2022	101000	622000	530120	250.00
	Public Transportation	Transit Operations	2022	101000	622000	530260	3,240.00
	Public Transportation	Transit Operations	2022	101000	622000	530360	1,505.10

CSP Cat.	Department	Cost Center Description	Fiscal		Cost		Actuals
			Year	Fund	Center	Acct	
	Public Transportation	Transit Operations	2022	101000	622000	530377	6,857.46
	Public Transportation	Transit Operations	2022	101000	622000	530380	10,974.00
	Public Transportation	Transit Operations	2022	101000	622000	540010	10,810.26
	Public Transportation	Transit Operations	2022	101000	622000	540050	199.00
	Public Transportation	Transit Operations	2022	101000	622000	540100	20,000.00
	Public Transportation	Transit Operations	2022	101000	622000	540150	715.00
	Public Transportation	Transit Operations	2022	101000	622000	540200	18,209.00
	Public Transportation	Transit Operations	2022	101000	622000	540271	137.04
	Public Transportation	Transit Operations	2022	101000	622000	540420	589.09
	Public Transportation	Transit Operations	2022	101000	622000	540640	85,680.00
	Public Transportation	Transit Operations	2022	101000	622000	580530	149,503.50
	Public Transportation	Vehicle Maintenance	2022	101000	630000	501010	2,087,159.18
	Public Transportation	Vehicle Maintenance	2022	101000	630000	501020	53,881.98
	Public Transportation	Vehicle Maintenance	2022	101000	630000	501040	228,152.23
	Public Transportation	Vehicle Maintenance	2022	101000	630000	501080	523,302.88
	Public Transportation	Vehicle Maintenance	2022	101000	630000	501090	1,262.77
	Public Transportation	Vehicle Maintenance	2022	101000	630000	501100	668,663.14
	Public Transportation	Vehicle Maintenance	2022	101000	630000	501105	183,331.86
	Public Transportation	Vehicle Maintenance	2022	101000	630000	501115	734.58
	Public Transportation	Vehicle Maintenance	2022	101000	630000	501118	50.00
	Public Transportation	Vehicle Maintenance	2022	101000	630000	501130	4,847.78
	Public Transportation	Vehicle Maintenance	2022	101000	630000	501140	3,034.64
	Public Transportation	Vehicle Maintenance	2022	101000	630000	501240	61,799.12
	Public Transportation	Vehicle Maintenance	2022	101000	630000	511000	68,887.53
	Public Transportation	Vehicle Maintenance	2022	101000	630000	511010	1,587.33
	Public Transportation	Vehicle Maintenance	2022	101000	630000	511130	7,662.42
	Public Transportation	Vehicle Maintenance	2022	101000	630000	511150	678,025.11
	Public Transportation	Vehicle Maintenance	2022	101000	630000	511160	93,216.35
	Public Transportation	Vehicle Maintenance	2022	101000	630000	511170	5,955.92
	Public Transportation	Vehicle Maintenance	2022	101000	630000	511180	38,115.03
	Public Transportation	Vehicle Maintenance	2022	101000	630000	511200	13,952.01
	Public Transportation	Vehicle Maintenance	2022	101000	630000	511380	99,659.29
	Public Transportation	Vehicle Maintenance	2022	101000	630000	530010	1,759.00
	Public Transportation	Vehicle Maintenance	2022	101000	630000	530020	14,782.55
	Public Transportation	Vehicle Maintenance	2022	101000	630000	530060	315.75
	Public Transportation	Vehicle Maintenance	2022	101000	630000	530110	7,869.00
	Public Transportation	Vehicle Maintenance	2022	101000	630000	530260	1,115.00
	Public Transportation	Vehicle Maintenance	2022	101000	630000	530360	70,283.19
	Public Transportation	Vehicle Maintenance	2022	101000	630000	540040	1,113.50
	Public Transportation	Vehicle Maintenance	2022	101000	630000	540050	103.60
	Public Transportation	Vehicle Maintenance	2022	101000	630000	540150	130.00
	Public Transportation	Vehicle Maintenance	2022	101000	630000	540180	5,449.54
	Public Transportation	Vehicle Maintenance	2022	101000	630000	540200	26,715.70
	Public Transportation	Vehicle Maintenance	2022	101000	630000	540360	2,360.04
	Public Transportation	Vehicle Maintenance	2022	101000	630000	540470	3,590.25
	Public Transportation	Vehicle Maintenance	2022	101000	630000	550090	18.00
	Public Transportation	Vehicle Maintenance	2022	101000	630000	550091	163.00
	Public Transportation	Vehicle Maintenance	2022	101000	630000	580530	195,082.13
	Public Transportation	Non-Vehicle Maintenance	2022	101000	640000	501010	66,312.97
	Public Transportation	Non-Vehicle Maintenance	2022	101000	640000	501020	77.03
	Public Transportation	Non-Vehicle Maintenance	2022	101000	640000	501040	5,870.09
	Public Transportation	Non-Vehicle Maintenance	2022	101000	640000	501080	15,756.54
	Public Transportation	Non-Vehicle Maintenance	2022	101000	640000	501090	68.00
	Public Transportation	Non-Vehicle Maintenance	2022	101000	640000	501100	42,240.00
	Public Transportation	Non-Vehicle Maintenance	2022	101000	640000	501105	5,225.70
	Public Transportation	Non-Vehicle Maintenance	2022	101000	640000	501115	39.60
	Public Transportation	Non-Vehicle Maintenance	2022	101000	640000	501130	144.72
	Public Transportation	Non-Vehicle Maintenance	2022	101000	640000	501140	92.70
	Public Transportation	Non-Vehicle Maintenance	2022	101000	640000	511000	12,449.83

CSP Cat.	Department	Cost Center Description	Fiscal		Cost		Actuals
			Year	Fund	Center	Acct	
	Public Transportation	Non-Vehicle Maintenance	2022	101000	640000	511010	1,651.11
	Public Transportation	Non-Vehicle Maintenance	2022	101000	640000	511380	6,556.44
	Public Transportation	Non-Vehicle Maintenance	2022	101000	640000	530270	38.72
	Public Transportation	Non-Vehicle Maintenance	2022	101000	640000	530360	33,496.16
	Public Transportation	Non-Vehicle Maintenance	2022	101000	640000	530380	5,550.00
	Public Transportation	Non-Vehicle Maintenance	2022	101000	640000	540040	1,260.00
	Public Transportation	Non-Vehicle Maintenance	2022	101000	640000	540180	313.25
	Public Transportation	Non-Vehicle Maintenance	2022	101000	640000	540610	305.05
	Public Transportation	Non-Vehicle Maintenance	2022	101000	640000	540640	15,026.62
	Public Transportation	Non-Vehicle Maintenance	2022	101000	640000	580530	147,608.00
	Public Transportation	Non-Vehicle Maintenance	2022	101000	640000	590200	8,064.00
	Public Transportation	Transit Planning	2022	231800	614000	501010	35,806.09
	Public Transportation	Transit Planning	2022	231800	614000	501020	320.09
	Public Transportation	Transit Planning	2022	231800	614000	501080	7,875.13
	Public Transportation	Transit Planning	2022	231800	614000	501090	18.49
	Public Transportation	Transit Planning	2022	231800	614000	501100	12,122.30
	Public Transportation	Transit Planning	2022	231800	614000	501105	2,745.20
	Public Transportation	Transit Planning	2022	231800	614000	501115	9.38
	Public Transportation	Transit Planning	2022	231800	614000	501130	73.32
	Public Transportation	Transit Planning	2022	231800	614000	501140	42.16
	Public Transportation	Para Transit Services	2022	231800	615000	530380	93,750.00
	Public Transportation	Marketing & Customer Service	2022	231900	613000	501010	190,863.13
	Public Transportation	Marketing & Customer Service	2022	231900	613000	501020	980.62
	Public Transportation	Marketing & Customer Service	2022	231900	613000	501040	29,196.93
	Public Transportation	Marketing & Customer Service	2022	231900	613000	501080	45,667.11
	Public Transportation	Marketing & Customer Service	2022	231900	613000	501090	120.93
	Public Transportation	Marketing & Customer Service	2022	231900	613000	501100	73,319.89
	Public Transportation	Marketing & Customer Service	2022	231900	613000	501105	16,211.93
	Public Transportation	Marketing & Customer Service	2022	231900	613000	501115	69.42
	Public Transportation	Marketing & Customer Service	2022	231900	613000	501130	435.81
	Public Transportation	Marketing & Customer Service	2022	231900	613000	501140	274.84
	Public Transportation	Marketing & Customer Service	2022	231900	613000	511000	34.99
	Public Transportation	Marketing & Customer Service	2022	231900	613000	511010	399.58
	Public Transportation	Marketing & Customer Service	2022	231900	613000	511050	119.99
	Public Transportation	Marketing & Customer Service	2022	231900	613000	511080	5,811.84
	Public Transportation	Marketing & Customer Service	2022	231900	613000	520040	1,499.50
	Public Transportation	Marketing & Customer Service	2022	231900	613000	520050	83.22
	Public Transportation	Marketing & Customer Service	2022	231900	613000	520060	1,007.67
	Public Transportation	Marketing & Customer Service	2022	231900	613000	520070	168.00
	Public Transportation	Marketing & Customer Service	2022	231900	613000	520080	3,664.00
	Public Transportation	Marketing & Customer Service	2022	231900	613000	530050	1,025.88
	Public Transportation	Marketing & Customer Service	2022	231900	613000	530380	329,125.96
	Public Transportation	Marketing & Customer Service	2022	231900	613000	540040	4,459.00
	Public Transportation	Marketing & Customer Service	2022	231900	613000	540150	80,336.05
	Public Transportation	Marketing & Customer Service	2022	231900	613000	540160	9,236.04
	Public Transportation	Marketing & Customer Service	2022	231900	613000	540180	846.58
	Public Transportation	Marketing & Customer Service	2022	231900	613000	540220	46.26
	Public Transportation	Marketing & Customer Service	2022	231900	613000	540271	588.00
	Public Transportation	Marketing & Customer Service	2022	231900	613000	540280	175.75
	Public Transportation	Transit Planning	2022	231900	614000	501010	139,710.95
	Public Transportation	Transit Planning	2022	231900	614000	501020	1,604.26
	Public Transportation	Transit Planning	2022	231900	614000	501040	3,604.42
	Public Transportation	Transit Planning	2022	231900	614000	501080	31,483.70
	Public Transportation	Transit Planning	2022	231900	614000	501090	77.16
	Public Transportation	Transit Planning	2022	231900	614000	501100	43,631.84
	Public Transportation	Transit Planning	2022	231900	614000	501105	11,110.68
	Public Transportation	Transit Planning	2022	231900	614000	501115	43.51
	Public Transportation	Transit Planning	2022	231900	614000	501130	292.14
	Public Transportation	Transit Planning	2022	231900	614000	501140	191.78

CSP Cat.	Department	Cost Center Description	Fiscal		Cost		Actuals
			Year	Fund	Center	Acct	
	Public Transportation	Transit Planning	2022	231900	614000	520040	1,793.15
	Public Transportation	Transit Planning	2022	231900	614000	520050	56.04
	Public Transportation	Transit Planning	2022	231900	614000	520060	543.78
	Public Transportation	Transit Planning	2022	231900	614000	520080	1,565.00
	Public Transportation	Para Transit Services	2022	231900	615000	501010	36,394.40
	Public Transportation	Para Transit Services	2022	231900	615000	501080	7,931.77
	Public Transportation	Para Transit Services	2022	231900	615000	501090	17.00
	Public Transportation	Para Transit Services	2022	231900	615000	501100	10,705.00
	Public Transportation	Para Transit Services	2022	231900	615000	501105	2,421.88
	Public Transportation	Para Transit Services	2022	231900	615000	501115	9.90
	Public Transportation	Para Transit Services	2022	231900	615000	501130	72.10
	Public Transportation	Para Transit Services	2022	231900	615000	501140	47.95
	Public Transportation	Para Transit Services	2022	231900	615000	530380	1,053,657.10
	Public Transportation	Para Transit Services	2022	241800	615000	501010	14,871.95
	Public Transportation	Para Transit Services	2022	241800	615000	501040	1,970.75
	Public Transportation	Para Transit Services	2022	241800	615000	501080	3,775.28
	Public Transportation	Para Transit Services	2022	241800	615000	501090	11.90
	Public Transportation	Para Transit Services	2022	241800	615000	501100	5,157.30
	Public Transportation	Para Transit Services	2022	241800	615000	501105	1,300.38
	Public Transportation	Para Transit Services	2022	241800	615000	501115	7.19
	Public Transportation	Para Transit Services	2022	241800	615000	501130	33.58
	Public Transportation	Para Transit Services	2022	241800	615000	501140	23.90
	Public Transportation	Para Transit Services	2022	241900	615000	501010	76,514.38
	Public Transportation	Para Transit Services	2022	241900	615000	501040	9,267.46
	Public Transportation	Para Transit Services	2022	241900	615000	501080	19,305.73
	Public Transportation	Para Transit Services	2022	241900	615000	501090	62.90
	Public Transportation	Para Transit Services	2022	241900	615000	501100	25,621.70
	Public Transportation	Para Transit Services	2022	241900	615000	501105	6,628.45
	Public Transportation	Para Transit Services	2022	241900	615000	501115	36.37
	Public Transportation	Para Transit Services	2022	241900	615000	501130	171.10
	Public Transportation	Para Transit Services	2022	241900	615000	501140	120.73
	Public Transportation	Transit Operations	2022	241900	622000	501010	777,544.10
	Public Transportation	Transit Operations	2022	241900	622000	501020	207,561.10
	Public Transportation	Transit Operations	2022	241900	622000	501040	20,951.83
	Public Transportation	Transit Operations	2022	241900	622000	501080	133,780.80
	Public Transportation	Transit Operations	2022	241900	622000	501090	312.80
	Public Transportation	Transit Operations	2022	241900	622000	501100	156,149.50
	Public Transportation	Transit Operations	2022	241900	622000	501105	47,148.01
	Public Transportation	Transit Operations	2022	241900	622000	501115	185.13
	Public Transportation	Transit Operations	2022	241900	622000	501130	1,219.04
	Public Transportation	Transit Operations	2022	241900	622000	501140	573.18
	Public Transportation	Transit Operations	2022	241900	622000	501240	17,743.34
	Public Transportation	Transit Operations	2022	241900	622000	511000	6,706.83
	Public Transportation	Transit Operations	2022	241900	622000	511090	1,670.51
	Public Transportation	Transit Operations	2022	241900	622000	511130	4,129.00
	Public Transportation	Transit Operations	2022	241900	622000	511150	560.58
	Public Transportation	Transit Operations	2022	241900	622000	511170	1,059,531.21
	Public Transportation	Transit Operations	2022	241900	622000	511380	27.36
	Public Transportation	Transit Operations	2022	241900	622000	530010	8,190.00
	Public Transportation	Transit Operations	2022	241900	622000	530060	1,332.75
	Public Transportation	Transit Operations	2022	241900	622000	530360	992.25
	Public Transportation	Transit Operations	2022	241900	622000	530380	60.00
	Public Transportation	Transit Operations	2022	241900	622000	540150	59,802.62
	Public Transportation	Transit Operations	2022	241900	622000	540640	4,855.00
	Public Transportation	Transit Operations	2022	241900	622000	590210	2,582.26
	Public Transportation	Vehicle Maintenance	2022	241900	630000	501010	1,829,052.31
	Public Transportation	Vehicle Maintenance	2022	241900	630000	501020	47,603.15
	Public Transportation	Vehicle Maintenance	2022	241900	630000	501080	462,009.41
	Public Transportation	Vehicle Maintenance	2022	241900	630000	501100	583,679.64

CSP Cat.	Department	Cost Center Description	Fiscal		Cost		Actuals
			Year	Fund	Center	Acct	
	Public Transportation	Vehicle Maintenance	2022	241900	630000	501115	82.54
	Public Transportation	Vehicle Maintenance	2022	241900	630000	501240	54,982.95
	Public Transportation	Vehicle Maintenance	2022	241900	630000	511130	706.68
	Public Transportation	Vehicle Maintenance	2022	241900	630000	511150	129,848.70
	Public Transportation	Vehicle Maintenance	2022	241900	630000	511380	826.55
	Public Transportation	Non-Vehicle Maintenance	2022	241900	640000	501010	234,486.15
	Public Transportation	Non-Vehicle Maintenance	2022	241900	640000	501020	77.03
	Public Transportation	Non-Vehicle Maintenance	2022	241900	640000	501040	12,347.21
	Public Transportation	Non-Vehicle Maintenance	2022	241900	640000	501080	34,088.91
	Public Transportation	Non-Vehicle Maintenance	2022	241900	640000	501090	113.90
	Public Transportation	Non-Vehicle Maintenance	2022	241900	640000	501100	71,071.00
	Public Transportation	Non-Vehicle Maintenance	2022	241900	640000	501105	11,503.57
	Public Transportation	Non-Vehicle Maintenance	2022	241900	640000	501115	67.32
	Public Transportation	Non-Vehicle Maintenance	2022	241900	640000	501130	309.90
	Public Transportation	Non-Vehicle Maintenance	2022	241900	640000	501140	209.37
	Public Transportation	Non-Vehicle Maintenance	2022	241900	640000	511000	720.04
	Public Transportation	Non-Vehicle Maintenance	2022	241900	640000	511380	1,106.00
	Public Transportation	Non-Vehicle Maintenance	2022	241900	640000	530360	21,973.02
	Public Transportation	Non-Vehicle Maintenance	2022	241900	640000	530380	288.00
	Public Transportation	Non-Vehicle Maintenance	2022	241900	640000	540180	741.68
	Public Transportation	Non-Vehicle Maintenance	2022	241900	640000	540470	25,019.50
	Public Transportation	Non-Vehicle Maintenance	2022	261010	640000	580530	15,698.47
	Public Transportation	Transit Planning	2022	485100	614000	570210	689.31
	Public Transportation	Transit Planning	2022	485100	614000	570220	29,380.25
	Public Transportation	Transit Planning	2022	485100	614000	590210	5,254.36
	Public Transportation	Para Transit Services	2022	485100	615000	570190	195,871.28
	Public Transportation	Para Transit Services	2022	485100	615000	570210	16,777.92
	Public Transportation	Para Transit Services	2022	485100	615000	590210	5,473.83
	Public Transportation	Vehicle Maintenance	2022	485100	630000	511090	585.55
	Public Transportation	Vehicle Maintenance	2022	485100	630000	511150	700.00
	Public Transportation	Vehicle Maintenance	2022	485100	630000	511180	55,336.30
	Public Transportation	Vehicle Maintenance	2022	485100	630000	570180	6,569.78
	Public Transportation	Vehicle Maintenance	2022	485100	630000	570190	758,698.00
	Public Transportation	Vehicle Maintenance	2022	485100	630000	580140	4,317.00
	Public Transportation	Vehicle Maintenance	2022	485100	630000	580530	70.00
	Public Transportation	Non-Vehicle Maintenance	2022	485100	640000	501010	1,581.25
	Public Transportation	Non-Vehicle Maintenance	2022	485100	640000	501080	254.76
	Public Transportation	Non-Vehicle Maintenance	2022	485100	640000	501090	0.55
	Public Transportation	Non-Vehicle Maintenance	2022	485100	640000	501100	347.92
	Public Transportation	Non-Vehicle Maintenance	2022	485100	640000	501105	86.98
	Public Transportation	Non-Vehicle Maintenance	2022	485100	640000	501115	0.15
	Public Transportation	Non-Vehicle Maintenance	2022	485100	640000	501130	3.30
	Public Transportation	Non-Vehicle Maintenance	2022	485100	640000	501140	0.78
	Public Transportation	Non-Vehicle Maintenance	2022	485100	640000	530360	49,037.31
	Public Transportation	Non-Vehicle Maintenance	2022	485100	640000	530380	38,459.54
	Public Transportation	Non-Vehicle Maintenance	2022	485100	640000	570210	198,540.00
	Public Transportation	Non-Vehicle Maintenance	2022	485100	640000	570220	160,000.00
	Public Transportation	Non-Vehicle Maintenance	2022	485100	640000	580140	16,516.00
	Public Transportation	Non-Vehicle Maintenance	2022	485100	640000	580530	267.00
	Public Transportation	Non-Vehicle Maintenance	2022	485100	640000	590200	56,911.79
	Public Transportation	Transit Planning	2022	485800	614000	511000	469.09
	Public Transportation	Para Transit Services	2022	485800	615000	570190	14,313.62
	Public Transportation	Vehicle Maintenance	2022	485800	630000	511180	284.99
	Public Transportation	Vehicle Maintenance	2022	485800	630000	570190	462,709.00
	Public Transportation	Non-Vehicle Maintenance	2022	485800	640000	530360	6,630.00
	Public Transportation	Non-Vehicle Maintenance	2022	485800	640000	530380	1,771.44
	Public Transportation	Non-Vehicle Maintenance	2022	485800	640000	570210	1,167.31
	Public Transportation	Para Transit Services	2022	485900	615000	540160	3,460.17
	Public Transportation	Para Transit Services	2022	485900	615000	540200	73,116.22

CSP							
Cat.	Department	Cost Center Description	Fiscal Year	Fund	Cost Center	Acct	Actuals
	Public Transportation	Para Transit Services	2022	485900	615000	570190	1,382,141.10
	Public Transportation	Para Transit Services	2022	485900	615000	570210	(16,777.92)
	Public Transportation	Vehicle Maintenance	2022	485900	630000	511090	6,394.77
	Public Transportation	Vehicle Maintenance	2022	485900	630000	511150	56,587.05
	Public Transportation	Vehicle Maintenance	2022	485900	630000	511180	151,636.54
	Public Transportation	Vehicle Maintenance	2022	485900	630000	530360	72,525.98
	Public Transportation	Vehicle Maintenance	2022	485900	630000	530380	12,095.00
	Public Transportation	Vehicle Maintenance	2022	485900	630000	540610	307.50
	Public Transportation	Vehicle Maintenance	2022	485900	630000	570190	3,564,445.15
	Public Transportation	Vehicle Maintenance	2022	485900	630000	570200	99,703.64
	Public Transportation	Vehicle Maintenance	2022	485900	630000	590210	(2,797.62)
	Public Transportation	Non-Vehicle Maintenance	2022	485900	640000	501010	15,820.51
	Public Transportation	Non-Vehicle Maintenance	2022	485900	640000	501040	449.64
	Public Transportation	Non-Vehicle Maintenance	2022	485900	640000	501080	3,692.12
	Public Transportation	Non-Vehicle Maintenance	2022	485900	640000	501090	8.26
	Public Transportation	Non-Vehicle Maintenance	2022	485900	640000	501100	5,419.41
	Public Transportation	Non-Vehicle Maintenance	2022	485900	640000	501105	1,257.52
	Public Transportation	Non-Vehicle Maintenance	2022	485900	640000	501115	4.64
	Public Transportation	Non-Vehicle Maintenance	2022	485900	640000	501130	32.54
	Public Transportation	Non-Vehicle Maintenance	2022	485900	640000	501140	22.89
	Public Transportation	Non-Vehicle Maintenance	2022	485900	640000	530360	46,460.00
	Public Transportation	Non-Vehicle Maintenance	2022	485900	640000	530375	1,133.20
	Public Transportation	Non-Vehicle Maintenance	2022	485900	640000	530380	59,383.34
	Public Transportation	Non-Vehicle Maintenance	2022	485900	640000	570180	40,229.12
	Public Transportation	Non-Vehicle Maintenance	2022	485900	640000	570210	875,009.43
	Public Transportation	Non-Vehicle Maintenance	2022	485900	640000	570220	310,919.36
	Public Transportation	Non-Vehicle Maintenance	2022	485900	640000	590160	20,591.00
							<u>43,947,071.40</u>

CSP Cat.	Department	Cost Center Description	Fiscal		Cost		Actuals
			Year	Fund	Center	Acct	
	Public Transportation	Transit Administration	2022	101000	611000	600020	5,924.31
	Public Transportation	Transit Administration	2022	101000	611000	600030	31,530.11
	Public Transportation	Transit Administration	2022	101000	611000	600050	4,923.63
	Public Transportation	Transit Administration	2022	101000	611000	600060	37,330.56
	Public Transportation	Transit Administration	2022	101000	611000	600080	73,663.36
	Public Transportation	Transit Administration	2022	101000	611000	600090	61,644.20
	Public Transportation	Transit Administration	2022	101000	611000	600140	4,869.98
	Public Transportation	Transit Administration	2022	101000	611000	600150	111,687.13
	Public Transportation	Transit Administration	2022	101000	611000	600160	23,316.30
	Public Transportation	Transit Administration	2022	101000	611000	600200	98,461.78
	Public Transportation	Transit Administration	2022	101000	611000	600220	39,361.74
	Public Transportation	Transit Administration	2022	101000	611000	600240	49,903.75
	Public Transportation	Transit Administration	2022	101000	611000	600250	6,288.99
	Public Transportation	Transit Administration	2022	101000	611000	600280	87,610.54
	Public Transportation	Transit Administration	2022	101000	611000	600290	155,304.69
	Public Transportation	Transit Administration	2022	101000	611000	600300	47,202.46
	Public Transportation	Transit Administration	2022	101000	611000	600320	41,108.17
	Public Transportation	Transit Administration	2022	101000	611000	600330	16,964.48
	Public Transportation	Transit Administration	2022	101000	611000	600360	95,104.29
	Public Transportation	Transit Administration	2022	101000	611000	600370	17,497.91
	Public Transportation	Transit Administration	2022	101000	611000	600430	14,204.42
	Public Transportation	Transit Administration	2022	101000	611000	600540	209,737.83
	Public Transportation	Transit Administration	2022	101000	611000	600570	32,595.77
	Public Transportation	Transit Administration	2022	101000	611000	600580	141,604.44
	Public Transportation	Transit Administration	2022	101000	611000	600610	65,153.95
	Public Transportation	Transit Administration	2022	101000	611000	601110	1,981,583.87
	Public Transportation	Transit Administration	2022	101000	611000	601470	18,328.15
	Public Transportation	Transit Administration	2022	101000	611000	601580	89,735.02
	Public Transportation	Transit Administration	2022	101000	611000	601590	63,626.93
	Public Transportation	Transit Administration	2022	101000	611000	601600	29,134.75
	Public Transportation	Transit Administration	2022	101000	611000	601620	24,398.07
	Public Transportation	Transit Administration	2022	101000	611000	601820	34,733.82
	Public Transportation	Transit Administration	2022	101000	611000	601840	17,107.60
	Public Transportation	Transit Administration	2022	101000	611000	601850	51,891.67
	Public Transportation	Transit Administration	2022	101000	611000	601880	175,527.00
	Public Transportation	Transit Administration	2022	101000	611000	601890	262,047.79
	Public Transportation	Transit Administration	2022	101000	611000	601900	4,663.92
	Public Transportation	Transit Administration	2022	101000	611000	601910	34,029.62
	Public Transportation	Transit Administration	2022	101000	611000	601930	11,542.35
	Public Transportation	Transit Administration	2022	101000	611000	601960	48,544.15
	Public Transportation	Transit Administration	2022	101000	611000	605023	24,305.20
	Public Transportation	Transit Administration	2022	101000	611000	605530	30,794.49
	Public Transportation	Transit Administration	2022	101000	611000	605540	21,213.84
	Public Transportation	Marketing & Customer Service	2022	101000	613000	605530	12,088.80
	Public Transportation	Marketing & Customer Service	2022	101000	613000	605540	8,327.05
	Public Transportation	Transit Planning	2022	101000	614000	605530	6,250.90
	Public Transportation	Transit Planning	2022	101000	614000	605540	4,331.21
	Public Transportation	Para Transit Services	2022	101000	615000	605530	5,488.92
	Public Transportation	Para Transit Services	2022	101000	615000	605540	3,796.00
	Public Transportation	Transit Operations	2022	101000	622000	600420	5,282.91
	Public Transportation	Transit Operations	2022	101000	622000	600890	91,980.00
	Public Transportation	Transit Operations	2022	101000	622000	601470	144,006.92
	Public Transportation	Transit Operations	2022	101000	622000	605530	545,788.56
	Public Transportation	Transit Operations	2022	101000	622000	605540	377,039.98
	Public Transportation	Vehicle Maintenance	2022	101000	630000	605530	154,379.28
	Public Transportation	Vehicle Maintenance	2022	101000	630000	605540	105,393.42
	Public Transportation	Non-Vehicle Maintenance	2022	101000	640000	605003	(81,323.00)
	Public Transportation	Non-Vehicle Maintenance	2022	101000	640000	605530	4,656.61
	Public Transportation	Non-Vehicle Maintenance	2022	101000	640000	605540	3,182.81

CSP Cat.	Department	Cost Center Description	Fiscal		Cost		Actuals
			Year	Fund	Center	Acct	
	Public Transportation	Transit Planning	2022	231800	614000	605530	2,332.11
	Public Transportation	Transit Planning	2022	231800	614000	605540	1,536.34
	Public Transportation	Transit Planning	2022	231800	614000	615200	22,816.00
	Public Transportation	Para Transit Services	2022	231800	615000	615200	5,498.00
	Public Transportation	Marketing & Customer Service	2022	231900	613000	605530	14,003.09
	Public Transportation	Marketing & Customer Service	2022	231900	613000	605540	9,621.66
	Public Transportation	Transit Planning	2022	231900	614000	605530	9,209.88
	Public Transportation	Transit Planning	2022	231900	614000	605540	6,423.75
	Public Transportation	Para Transit Services	2022	231900	615000	615200	8,069.00
	Public Transportation	Para Transit Services	2022	241800	615000	605530	1,075.77
	Public Transportation	Para Transit Services	2022	241800	615000	605540	742.58
	Public Transportation	Para Transit Services	2022	241800	615000	615200	9,237.00
	Public Transportation	Para Transit Services	2022	241900	615000	605530	5,468.03
	Public Transportation	Para Transit Services	2022	241900	615000	605540	3,797.75
	Public Transportation	Transit Operations	2022	241900	622000	605530	39,060.59
	Public Transportation	Transit Operations	2022	241900	622000	605540	27,016.16
	Public Transportation	Non-Vehicle Maintenance	2022	241900	640000	600230	106.46
	Public Transportation	Non-Vehicle Maintenance	2022	241900	640000	605530	9,951.58
	Public Transportation	Non-Vehicle Maintenance	2022	241900	640000	605540	6,833.88
	Public Transportation	Non-Vehicle Maintenance	2022	485100	640000	605530	8.22
	Public Transportation	Non-Vehicle Maintenance	2022	485100	640000	605540	43.42
	Public Transportation	Non-Vehicle Maintenance	2022	485100	640000	615202	24,000.00
	Public Transportation	Vehicle Maintenance	2022	485800	630000	615202	318,140.00
	Public Transportation	Non-Vehicle Maintenance	2022	485800	640000	615202	56,608.00
	Public Transportation	Non-Vehicle Maintenance	2022	485900	640000	600230	198.81
	Public Transportation	Non-Vehicle Maintenance	2022	485900	640000	605530	465.06
	Public Transportation	Non-Vehicle Maintenance	2022	485900	640000	605540	664.27
							<u>6,369,800.81</u>

CSP Cat.	Department	Cost Center Description	Fiscal		Cost		Actuals
			Year	Fund	Center	Acct	
Public Transportation	Transit Administration	Transit Administration	2022	101000	611000	405120	(35.85)
Public Transportation	Transit Administration	Transit Administration	2022	101000	611000	450010	(337.00)
Public Transportation	Marketing & Customer Service	Marketing & Customer Service	2022	101000	613000	406110	(173.00)
Public Transportation	Marketing & Customer Service	Marketing & Customer Service	2022	101000	613000	406220	(486,234.57)
Public Transportation	Marketing & Customer Service	Marketing & Customer Service	2022	101000	613000	408550	(84.85)
Public Transportation	Marketing & Customer Service	Marketing & Customer Service	2022	101000	613000	408580	(10,375.52)
Public Transportation	Transit Operations	Transit Operations	2022	101000	622000	406250	(1,233,544.70)
Public Transportation	Transit Operations	Transit Operations	2022	101000	622000	406260	(1,672,692.10)
Public Transportation	Transit Operations	Transit Operations	2022	101000	622000	408550	5.02
Public Transportation	Transit Operations	Transit Operations	2022	101000	622000	450010	(15,698.47)
Public Transportation	Transit Operations	Transit Operations	2022	101000	622000	460070	(78,497.50)
Public Transportation	Transit Operations	Transit Operations	2022	101000	622000	600860	(124,990.08)
Public Transportation	Vehicle Maintenance	Vehicle Maintenance	2022	101000	630000	408390	(119,737.10)
Public Transportation	Vehicle Maintenance	Vehicle Maintenance	2022	101000	630000	605003	(2,977,410.00)
Public Transportation	Para Transit Services	Para Transit Services	2022	231800	615000	450010	(67,998.00)
Public Transportation	Marketing & Customer Service	Marketing & Customer Service	2022	231900	613000	405010	(77,272.31)
Public Transportation	Marketing & Customer Service	Marketing & Customer Service	2022	231900	613000	405150	(742,121.36)
Public Transportation	Transit Planning	Transit Planning	2022	231900	614000	405150	(251,342.14)
Public Transportation	Para Transit Services	Para Transit Services	2022	231900	615000	405010	(532,144.38)
Public Transportation	Para Transit Services	Para Transit Services	2022	231900	615000	405150	(587,181.72)
Public Transportation	Para Transit Services	Para Transit Services	2022	241800	615000	450010	(77,312.00)
Public Transportation	Para Transit Services	Para Transit Services	2022	241900	615000	405100	(146,994.60)
Public Transportation	Transit Operations	Transit Operations	2022	241900	622000	405100	(2,530,241.43)
Public Transportation	Vehicle Maintenance	Vehicle Maintenance	2022	241900	630000	405100	(3,291,475.58)
Public Transportation	Non-Vehicle Maintenance	Non-Vehicle Maintenance	2022	241900	640000	405100	(303,721.46)
Public Transportation	Transit Planning	Transit Planning	2022	485100	614000	460010	4,443.00
Public Transportation	Transit Planning	Transit Planning	2022	485100	614000	460030	557.00
Public Transportation	Para Transit Services	Para Transit Services	2022	485100	615000	460010	(50,989.00)
Public Transportation	Para Transit Services	Para Transit Services	2022	485100	615000	460030	4,906.00
Public Transportation	Vehicle Maintenance	Vehicle Maintenance	2022	485100	630000	460010	(409,290.00)
Public Transportation	Vehicle Maintenance	Vehicle Maintenance	2022	485100	630000	460030	(51,234.00)
Public Transportation	Non-Vehicle Maintenance	Non-Vehicle Maintenance	2022	485100	640000	460010	(1,765,735.00)
Public Transportation	Non-Vehicle Maintenance	Non-Vehicle Maintenance	2022	485100	640000	460030	(177,828.00)
Public Transportation	Marketing & Customer Service	Marketing & Customer Service	2022	485800	613000	408390	20,018.28
Public Transportation	Transit Planning	Transit Planning	2022	485800	614000	405050	(5,443.31)
Public Transportation	Transit Planning	Transit Planning	2022	485800	614000	450010	1,167.31
Public Transportation	Para Transit Services	Para Transit Services	2022	485800	615000	450010	25,382.04
Public Transportation	Transit Operations	Transit Operations	2022	485800	622000	450010	190,436.37
Public Transportation	Vehicle Maintenance	Vehicle Maintenance	2022	485800	630000	405050	5,443.31
Public Transportation	Vehicle Maintenance	Vehicle Maintenance	2022	485800	630000	408390	(20,018.28)
Public Transportation	Vehicle Maintenance	Vehicle Maintenance	2022	485800	630000	450010	(474,263.04)
Public Transportation	Non-Vehicle Maintenance	Non-Vehicle Maintenance	2022	485800	640000	450010	(293,916.31)
Public Transportation	Transit Planning	Transit Planning	2022	485900	614000	405100	109.73
Public Transportation	Para Transit Services	Para Transit Services	2022	485900	615000	405100	(59,798.30)
Public Transportation	Vehicle Maintenance	Vehicle Maintenance	2022	485900	630000	405100	(3,056,394.90)
Public Transportation	Non-Vehicle Maintenance	Non-Vehicle Maintenance	2022	485900	640000	405010	(9,822.12)
Public Transportation	Non-Vehicle Maintenance	Non-Vehicle Maintenance	2022	485900	640000	405100	(3,658,693.11)
							(25,108,573.03)

CSP Cat.	Department	Cost Center Description	Fiscal		Cost		Actuals
			Year	Fund	Center	Acct	
	Public Transportation	Transit Administration	2022	101000	611000	600020	5,924.31
	Public Transportation	Transit Administration	2022	101000	611000	600030	31,530.11
	Public Transportation	Transit Administration	2022	101000	611000	600050	4,923.63
	Public Transportation	Transit Administration	2022	101000	611000	600060	37,330.56
	Public Transportation	Transit Administration	2022	101000	611000	600090	61,644.20
	Public Transportation	Transit Administration	2022	101000	611000	600140	4,869.98
	Public Transportation	Transit Administration	2022	101000	611000	600150	111,687.13
	Public Transportation	Transit Administration	2022	101000	611000	600200	98,461.78
	Public Transportation	Transit Administration	2022	101000	611000	600220	39,361.74
	Public Transportation	Transit Administration	2022	101000	611000	600240	49,903.75
	Public Transportation	Transit Administration	2022	101000	611000	600250	6,288.99
	Public Transportation	Transit Administration	2022	101000	611000	600280	87,610.54
	Public Transportation	Transit Administration	2022	101000	611000	600290	155,304.69
	Public Transportation	Transit Administration	2022	101000	611000	600300	47,202.46
	Public Transportation	Transit Administration	2022	101000	611000	600320	41,108.17
	Public Transportation	Transit Administration	2022	101000	611000	600330	16,964.48
	Public Transportation	Transit Administration	2022	101000	611000	600360	95,104.29
	Public Transportation	Transit Administration	2022	101000	611000	600370	17,497.91
	Public Transportation	Transit Administration	2022	101000	611000	600430	14,204.42
	Public Transportation	Transit Administration	2022	101000	611000	600540	209,737.83
	Public Transportation	Transit Administration	2022	101000	611000	600570	32,595.77
	Public Transportation	Transit Administration	2022	101000	611000	600580	141,604.44
	Public Transportation	Transit Administration	2022	101000	611000	600610	65,153.95
	Public Transportation	Transit Administration	2022	101000	611000	601110	1,981,583.87
	Public Transportation	Transit Administration	2022	101000	611000	601470	18,328.15
	Public Transportation	Transit Administration	2022	101000	611000	601580	89,735.02
	Public Transportation	Transit Administration	2022	101000	611000	601590	63,626.93
	Public Transportation	Transit Administration	2022	101000	611000	601600	29,134.75
	Public Transportation	Transit Administration	2022	101000	611000	601820	34,733.82
	Public Transportation	Transit Administration	2022	101000	611000	601890	262,047.79
	Public Transportation	Transit Operations	2022	101000	622000	600420	5,282.91
	Public Transportation	Transit Operations	2022	101000	622000	600890	91,980.00
	Public Transportation	Transit Operations	2022	101000	622000	601470	144,006.92
	Public Transportation	Non-Vehicle Maintenance	2022	241900	640000	600230	106.46
	Public Transportation	Non-Vehicle Maintenance	2022	485900	640000	600230	198.81
							4,096,780.56

CSP Cat.	Department	Cost Center Description	Fiscal		Cost		Actuals
			Year	Fund	Center	Acct	
	Public Transportation	Transit Administration	2022	101000	611000	540590	10,570.87
	Public Transportation	Transit Administration	2022	101000	611000	580010	447,711.98
	Public Transportation	Transit Administration	2022	101000	611000	580020	146,331.22
	Public Transportation	Transit Administration	2022	101000	611000	580030	2.85
	Public Transportation	Transit Administration	2022	101000	611000	600080	73,663.36
	Public Transportation	Transit Administration	2022	101000	611000	600160	23,316.30
	Public Transportation	Transit Planning	2022	101000	614000	540150	595.00
	Public Transportation	Transit Planning	2022	101000	614000	580530	122,143.06
	Public Transportation	Para Transit Services	2022	101000	615000	580530	145,310.00
	Public Transportation	Transit Operations	2022	101000	622000	530120	250.00
	Public Transportation	Transit Operations	2022	101000	622000	540100	20,000.00
	Public Transportation	Transit Operations	2022	101000	622000	540150	715.00
	Public Transportation	Transit Operations	2022	101000	622000	580530	149,503.50
	Public Transportation	Vehicle Maintenance	2022	101000	630000	530110	7,869.00
	Public Transportation	Vehicle Maintenance	2022	101000	630000	540150	130.00
	Public Transportation	Vehicle Maintenance	2022	101000	630000	580530	195,082.13
	Public Transportation	Non-Vehicle Maintenance	2022	101000	640000	580530	147,608.00
	Public Transportation	Marketing & Customer Service	2022	231900	613000	540150	80,336.05
	Public Transportation	Transit Operations	2022	241900	622000	540150	59,802.62
	Public Transportation	Non-Vehicle Maintenance	2022	261010	640000	580530	15,698.47
	Public Transportation	Transit Planning	2022	485100	614000	570210	689.31
	Public Transportation	Transit Planning	2022	485100	614000	570220	29,380.25
	Public Transportation	Para Transit Services	2022	485100	615000	570190	195,871.28
	Public Transportation	Para Transit Services	2022	485100	615000	570210	16,777.92
	Public Transportation	Vehicle Maintenance	2022	485100	630000	570180	6,569.78
	Public Transportation	Vehicle Maintenance	2022	485100	630000	570190	758,698.00
	Public Transportation	Vehicle Maintenance	2022	485100	630000	580140	4,317.00
	Public Transportation	Vehicle Maintenance	2022	485100	630000	580530	70.00
	Public Transportation	Non-Vehicle Maintenance	2022	485100	640000	570210	198,540.00
	Public Transportation	Non-Vehicle Maintenance	2022	485100	640000	570220	160,000.00
	Public Transportation	Non-Vehicle Maintenance	2022	485100	640000	580140	16,516.00
	Public Transportation	Non-Vehicle Maintenance	2022	485100	640000	580530	267.00
	Public Transportation	Para Transit Services	2022	485800	615000	570190	14,313.62
	Public Transportation	Vehicle Maintenance	2022	485800	630000	570190	462,709.00
	Public Transportation	Non-Vehicle Maintenance	2022	485800	640000	570210	1,167.31
	Public Transportation	Para Transit Services	2022	485900	615000	570190	1,382,141.10
	Public Transportation	Para Transit Services	2022	485900	615000	570210	(16,777.92)
	Public Transportation	Vehicle Maintenance	2022	485900	630000	570190	3,564,445.15
	Public Transportation	Vehicle Maintenance	2022	485900	630000	570200	99,703.64
	Public Transportation	Non-Vehicle Maintenance	2022	485900	640000	570180	40,229.12
	Public Transportation	Non-Vehicle Maintenance	2022	485900	640000	570210	875,009.43
	Public Transportation	Non-Vehicle Maintenance	2022	485900	640000	570220	310,919.36
							9,768,195.76