



2011

CAP SIS Project Number

56007

Legislative District 24L



Anchorage Park Foundation

Cuddy Family Midtown Park Playground for All

Anchorage Park Foundation

The Anchorage Park Foundation strives to build *Healthy Parks & Healthy People* by mobilizing public support and financial resources for Anchorage parks, trails, and recreation opportunities. Do you have a vision for parks, trails, open spaces and recreation in Anchorage? Consider the Anchorage Park Foundation your opportunity to fund community projects through public-private partnerships.

Visit us at:
www.AnchorageParkFoundation.org

Parks & Recreation

Anchorage has 10,946 acres of municipal parkland, 223 parks, and over 250 miles of trails and greenbelts that link neighborhoods with surrounding natural open space and wildlife habitat. These are considerable assets for the citizens of Anchorage to enjoy and maintain.

Parks & Recreation launched the *Clean & Green, Safe & Secure Campaign* with the Anchorage Park Foundation to upgrade the safety, function, and appearance of Anchorage parks. To get involved, call 343-4587.

Cuddy Family Midtown Park is a central and vital gathering place for the Anchorage community, hosting skating, skiing walking, kite-flying and hundreds of other activities year-round. The Anchorage Park Foundation and the Parks & Recreation Department are working to enhance Cuddy Family Midtown Park with an amenity unique in Alaska: a fully accessible playground.

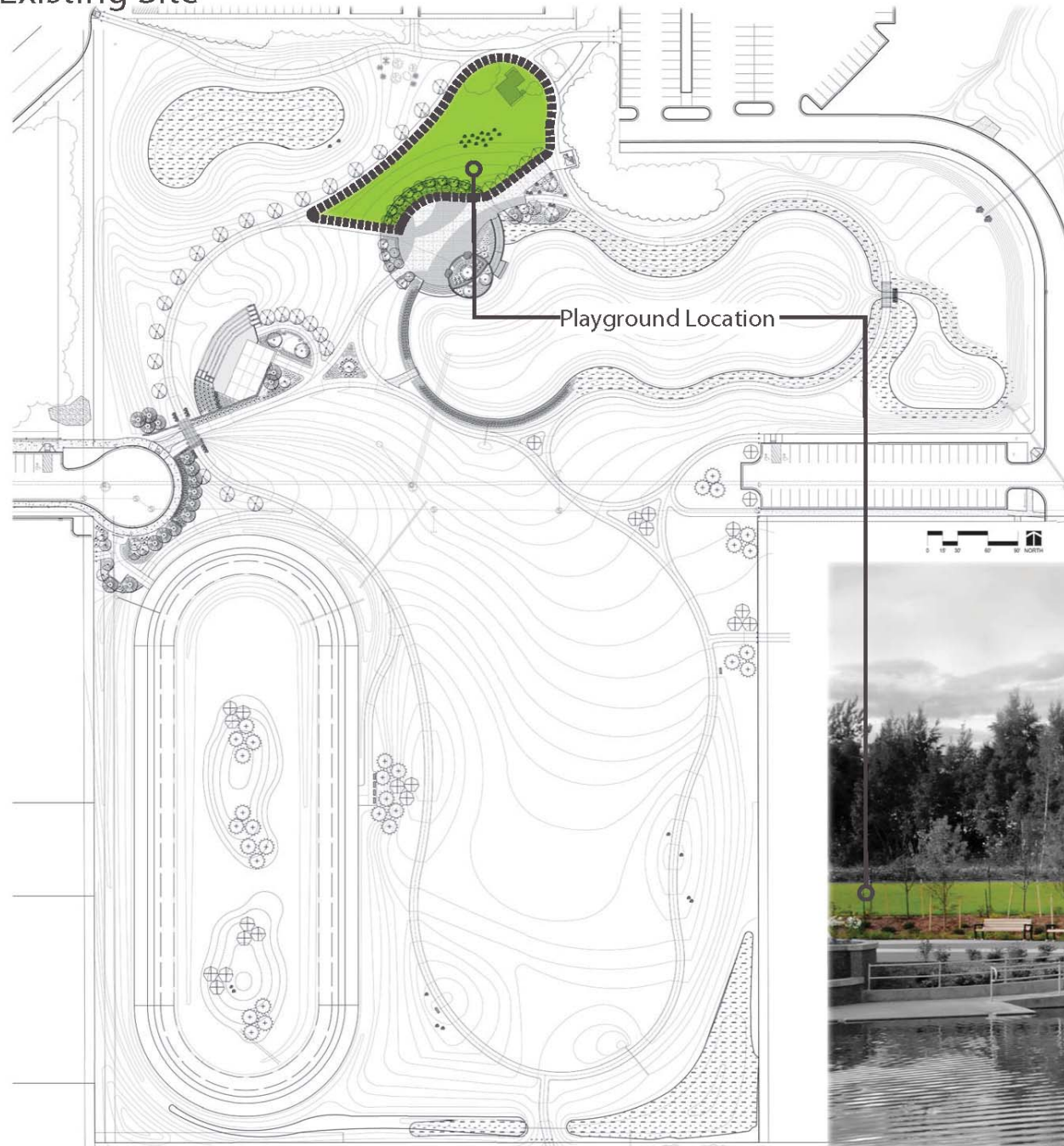
The "Playground for All" will stimulate the imaginations of all kids with ramps to different play features, wheelchair-accessible transfer platforms and play features at ground level. The APF and the Municipality of Anchorage Parks & Recreation Department are working together with families and local organizations to create a playground that meets the needs of Anchorage's diverse community and provides healthy, inclusive play and recreation opportunities for children and parents. The Parks for all Committee is proud to demonstrate its community support through many letters of support and their own fund-raising efforts.

Projects partners are currently raising funds and brainstorming design elements to integrate the new playground in the "glacial" theme of Cuddy Family Midtown Park. This project also offers an important opportunity to connect the park and its visitors with the adjacent Loussac Library, already one of the major anchors of the neighborhood.



Cuddy Family Midtown Park Playground

Existing Site



Global Ideas

- Certified Boundless Playground
- Exercise and Activities for Adults
- Distance Markers and Map for Park Trail Use
- Braille on All Signage
- Interpretive Materials - Fish Creek Drainage, Chugach Front Range, Lous Library, Migratory Birds
- Story Area

Global Concerns

- Separation from Overflow Pond
- Minimize Playground Escape Routes to Aid in Supervision
- Overall Color Selections - Natural (Setting) vs. High Contrast (Visual Aids)



Project Cost Estimate

Project Budget	Cost
1. Design & Contingency	\$140,000
2. Site Work & Landscaping	\$135,000
3. Play Equipment	\$170,000
4. Safety Surfacing	\$70,000
Total	\$515,000
Existing Funding Sources:	
1. (2010) Alaska State Legislative Grant	\$75,000
2. Municipality of Anchorage Funding (contribution from the Cuddy Family)	\$150,000
3. Contribution from Volunteers through labor	\$50,000
4. Left to raise	\$165,000
Total 2011 Legislative Request	\$75,000



Cuddy Family Midtown Park Playground For All