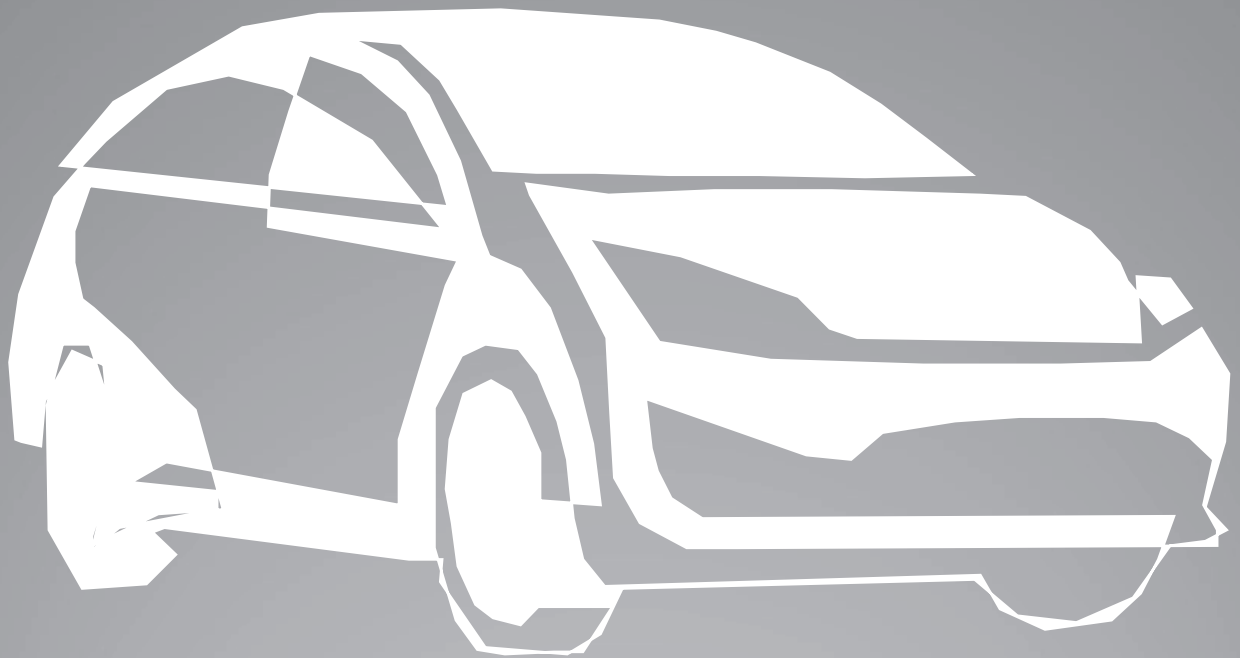
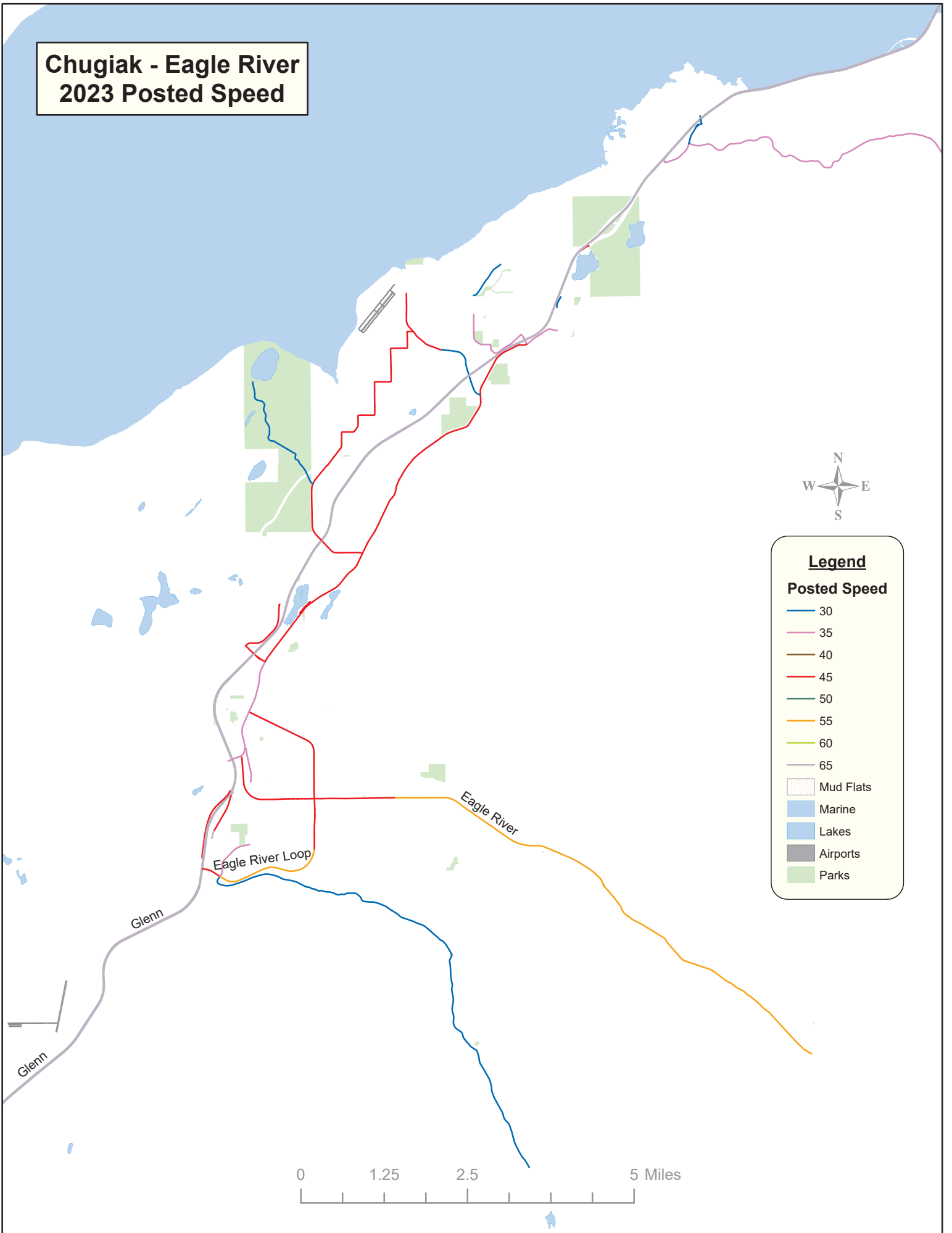


# ROADWAY INFORMATION

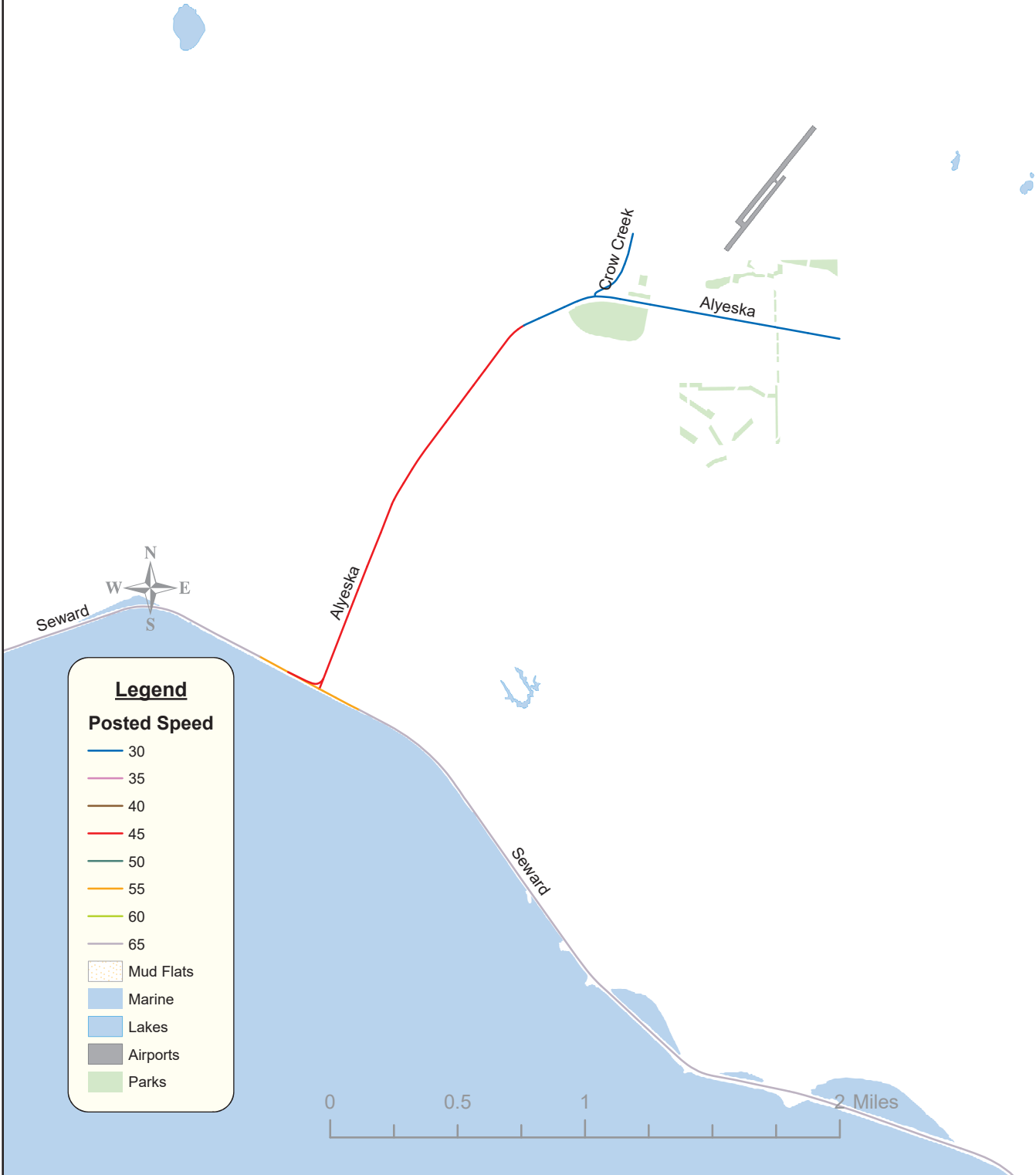




# Chugiak - Eagle River 2023 Posted Speed



# Girdwood 2023 Posted Speed



## 2023 SPEED STUDIES

| CNT | LOCATION     |                 | DIST / DIR | TYPE    | COUNT DATE | 85th PERCENTILE SPEED (mph) |       |       |       |
|-----|--------------|-----------------|------------|---------|------------|-----------------------------|-------|-------|-------|
|     | STREET       | CROSS REFERENCE |            |         |            | NORTH                       | SOUTH | EAST  | WEST  |
| 1   | 002          | Pauline         | 320 ft. W  | 24 Hour | 06/20/23   | -                           | -     | 22.00 | 23.00 |
| 2   |              |                 | 320 ft. W  | 24 Hour | 06/21/23   | -                           | -     | 19.00 | 19.00 |
| 3   | 004          | Alora           | 200 ft. E  | 24 Hour | 06/20/23   | -                           | -     | 27.00 | 28.00 |
| 4   |              |                 | 200 ft. E  | 24 Hour | 06/21/23   | -                           | -     | 27.00 | 26.00 |
| 5   | 009          | G               | 151 ft. W  | 24 Hour | 06/06/23   | -                           | -     | 34.00 | 28.00 |
| 6   |              |                 | 151 ft. W  | 24 Hour | 06/07/23   | -                           | -     | 33.00 | 28.00 |
| 7   | 009          | I               | 300 ft. W  | 24 Hour | 06/06/23   | -                           | -     | 26.00 | 34.00 |
| 8   |              |                 | 300 ft. W  | 24 Hour | 06/07/23   | -                           | -     | 24.00 | 34.00 |
| 9   | 013          | Cordova         | 320 ft. W  | 24 Hour | 07/19/23   | -                           | -     | 27.00 | 29.00 |
| 10  |              | Denali          | 175 ft. E  | 24 Hour | 07/19/23   | -                           | -     | 27.00 | 24.00 |
| 11  | 026          | Spenard         | 480 ft. E  | 24 Hour | 08/22/23   | -                           | -     | 24.00 | 24.00 |
| 12  |              |                 | 480 ft. E  | 24 Hour | 08/23/23   | -                           | -     | 24.00 | 24.00 |
| 13  |              |                 | 480 ft. E  | 24 Hour | 08/24/23   | -                           | -     | 25.00 | 24.00 |
| 14  | 037          | Williams        | 149 ft. E  | 24 Hour | 06/27/23   | -                           | -     | 14.00 | 17.00 |
| 15  |              |                 | 149 ft. E  | 24 Hour | 06/28/23   | -                           | -     | 14.00 | 18.00 |
| 16  | 046          | Northwood       | 347 ft. E  | 24 Hour | 08/31/23   | -                           | -     | 24.00 | 24.00 |
| 17  |              | Taft            | 343 ft. W  | 24 Hour | 08/31/23   | -                           | -     | 22.00 | 20.00 |
| 18  | 047          | Northwood       | 395 ft. E  | 24 Hour | 08/31/23   | -                           | -     | 23.00 | 26.00 |
| 19  |              | Taft            | 406 ft. W  | 24 Hour | 08/31/23   | -                           | -     | 24.00 | 24.00 |
| 20  | 048          | Northwood       | 320 ft. E  | 24 Hour | 08/31/23   | -                           | -     | 24.00 | 24.00 |
| 21  |              | Van Buren       | 62 ft. E   | 24 Hour | 08/31/23   | -                           | -     | 37.00 | 21.00 |
| 22  | 074          | Petersburg      | 356 ft. W  | 24 Hour | 09/12/23   | -                           | -     | 18.00 | 17.00 |
| 23  |              |                 | 356 ft. W  | 24 Hour | 09/13/23   | -                           | -     | 17.00 | 18.00 |
| 24  |              |                 | 356 ft. W  | 24 Hour | 09/14/23   | -                           | -     | 17.00 | 17.00 |
| 25  | 075          | Petersburg      | 329 ft. E  | 24 Hour | 09/12/23   | -                           | -     | 12.00 | 13.00 |
| 26  |              |                 | 329 ft. E  | 24 Hour | 09/13/23   | -                           | -     | 11.00 | 13.00 |
| 27  |              |                 | 329 ft. E  | 24 Hour | 09/14/23   | -                           | -     | 13.00 | 14.00 |
| 28  | 080          | Snow View       | 186 ft. E  | 24 Hour | 06/27/23   | -                           | -     | 36.00 | 34.00 |
| 29  |              |                 | 186 ft. E  | 24 Hour | 06/28/23   | -                           | -     | 36.00 | 34.00 |
| 30  | Alpenhorn    | Larkspur        | 239 ft. E  | 24 Hour | 08/30/23   | -                           | -     | 19.00 | 29.00 |
| 31  |              |                 | 239 ft. E  | 24 Hour | 08/31/23   | -                           | -     | 20.00 | 30.00 |
| 32  | Alyeska View | Kitzbuhel       | 152 ft. N  | 24 Hour | 07/12/23   | 22.00                       | 25.00 | -     | -     |
| 33  | Bartlett     | Waldron         | 600 ft. N  | 24 Hour | 08/30/23   | -                           | -     | 20.00 | 19.00 |
| 34  |              |                 | 600 ft. N  | 24 Hour | 08/31/23   | -                           | -     | 22.00 | 20.00 |
| 35  | Blackberry   | 064             | 400 ft. S  | 24 Hour | 07/25/23   | 32.00                       | 28.00 | -     | -     |
| 36  |              | Landau          | 91 ft. N   | 24 Hour | 07/25/23   | 26.00                       | 33.00 | -     | -     |
| 37  | Cache        | Bartlett        | 425 ft. S  | 24 Hour | 08/30/23   | 19.00                       | 18.00 | -     | -     |
| 38  |              |                 | 425 ft. S  | 24 Hour | 08/31/23   | 19.00                       | 18.00 | -     | -     |
| 39  | Chirikof     | Pavalof         | 45 ft. E   | 24 Hour | 08/30/23   | -                           | -     | 31.00 | 23.00 |
| 40  |              |                 | 45 ft. E   | 24 Hour | 08/31/23   | -                           | -     | 31.00 | 22.00 |
| 41  | Cordova      | 048             | 542 ft. S  | 24 Hour | 08/22/23   | 30.00                       | 32.00 | -     | -     |
| 42  |              |                 | 542 ft. S  | 24 Hour | 08/23/23   | 30.00                       | 32.00 | -     | -     |
| 43  |              |                 | 542 ft. S  | 24 Hour | 08/24/23   | 29.00                       | 31.00 | -     | -     |
| 44  | Crooked Tree | Round Tree      | 196 ft. E  | 24 Hour | 07/25/23   | -                           | -     | 24.00 | 26.00 |
| 45  |              |                 | 196 ft. E  | 24 Hour | 07/26/23   | -                           | -     | 24.00 | 26.00 |
| 46  | Debarr       | Boston          | 260 ft. E  | 24 Hour | 07/11/23   | -                           | -     | 26.00 | 24.00 |
| 47  |              |                 | 260 ft. E  | 24 Hour | 07/12/23   | -                           | -     | 27.00 | 24.00 |
| 48  |              | Valley          | 85 ft. W   | 24 Hour | 07/11/23   | -                           | -     | 24.00 | 24.00 |
| 49  |              |                 | 85 ft. W   | 24 Hour | 07/12/23   | -                           | -     | 24.00 | 24.00 |
| 50  | Duben        | Fall Leaf       | 81 ft. E   | 24 Hour | 06/13/23   | -                           | -     | 29.00 | 24.00 |

## 2023 SPEED STUDIES

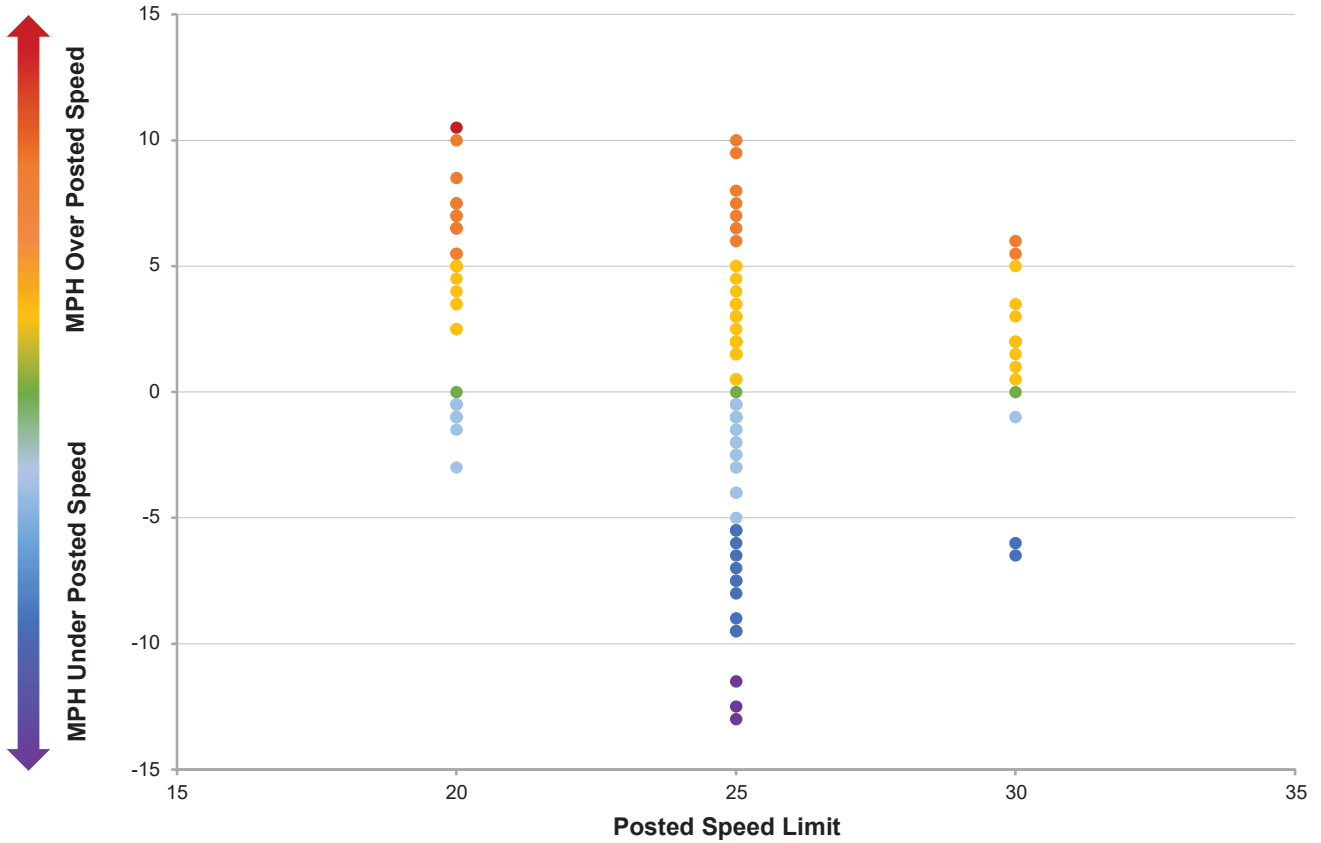
| CNT | LOCATION      |                   | DIST / DIR | TYPE    | COUNT DATE | 85th PERCENTILE SPEED (mph) |       |       |       |
|-----|---------------|-------------------|------------|---------|------------|-----------------------------|-------|-------|-------|
|     | STREET        | CROSS REFERENCE   |            |         |            | NORTH                       | SOUTH | EAST  | WEST  |
| 51  | E             | 010               | 136 ft. N  | 24 Hour | 06/06/23   | 24.00                       | 24.00 | -     | -     |
| 52  |               |                   | 136 ft. N  | 24 Hour | 06/07/23   | 24.00                       | 24.00 | -     | -     |
| 53  | F             | 009               | 195 ft. N  | 24 Hour | 06/07/23   | 22.00                       | 25.00 | -     | -     |
| 54  | Fern          | 004               | 260 ft. S  | 24 Hour | 06/27/23   | 24.00                       | 26.00 | -     | -     |
| 55  |               |                   | 260 ft. S  | 24 Hour | 06/28/23   | 25.00                       | 24.00 | -     | -     |
| 56  | Fischer       | Austin            | 263 ft. E  | 24 Hour | 06/14/23   | 25.00                       | 25.00 | -     | -     |
| 57  | Forest Park   | Arcadia           | 48 ft. S   | 24 Hour | 08/15/23   | 27.00                       | 27.00 | -     | -     |
| 58  |               |                   | 48 ft. S   | 24 Hour | 08/16/23   | 27.00                       | 27.00 | -     | -     |
| 59  |               | Arlington North   | 234 ft. S  | 24 Hour | 08/15/23   | 27.00                       | 29.00 | -     | -     |
| 60  |               |                   | 234 ft. S  | 24 Hour | 08/16/23   | 28.00                       | 29.00 | -     | -     |
| 61  | H             | 009               | 180 ft. N  | 24 Hour | 06/06/23   | 20.00                       | 24.00 | -     | -     |
| 62  |               |                   | 180 ft. N  | 24 Hour | 06/07/23   | 20.00                       | 24.00 | -     | -     |
| 63  | Jamestown     | Martha's Vineyard | 57 ft. S   | 24 Hour | 06/20/23   | 30.00                       | 26.00 | -     | -     |
| 64  |               |                   | 57 ft. S   | 24 Hour | 06/21/23   | 31.00                       | 26.00 | -     | -     |
| 65  | Jarvi         | Oceanview         | 644 ft. S  | 24 Hour | 07/25/23   | 23.00                       | 30.00 | -     | -     |
| 66  |               | Old Seward Hwy    | 1105 ft. W | 24 Hour | 07/25/23   | 23.00                       | 30.00 | -     | -     |
| 67  | Jewel Terrace | Dimond            | 390 ft. N  | 24 Hour | 07/11/23   | 18.00                       | 21.00 | -     | -     |
| 68  |               |                   | 390 ft. N  | 24 Hour | 07/15/23   | 18.00                       | 20.00 | -     | -     |
| 69  |               |                   | 390 ft. N  | 24 Hour | 07/16/23   | 19.00                       | 21.00 | -     | -     |
| 70  | Ladasa        | Parkridge         | 191 ft. S  | 24 Hour | 06/14/23   | 17.00                       | 19.00 | -     | -     |
| 71  | Little Tree   | Cindylee          | 50 ft. N   | 24 Hour | 08/30/23   | 19.00                       | 27.00 | -     | -     |
| 72  |               |                   | 50 ft. N   | 24 Hour | 08/31/23   | 20.00                       | 28.00 | -     | -     |
| 73  | Linden        | 072               | 500 ft. S  | 24 Hour | 06/20/23   | 24.00                       | 20.00 | -     | -     |
| 74  |               |                   | 500 ft. S  | 24 Hour | 06/21/23   | 24.00                       | 21.00 | -     | -     |
| 75  | Lone Tree     | Brown Tree        | 306 ft. S  | 24 Hour | 07/25/23   | 27.00                       | 27.00 | -     | -     |
| 76  |               |                   | 306 ft. S  | 24 Hour | 07/26/23   | 26.00                       | 28.00 | -     | -     |
| 77  |               | Green Tree        | 228 ft. S  | 24 Hour | 07/25/23   | 29.00                       | 24.00 | -     | -     |
| 78  |               |                   | 228 ft. S  | 24 Hour | 07/26/23   | 28.00                       | 22.00 | -     | -     |
| 79  |               | Red Tree          | 182 ft. N  | 24 Hour | 07/25/23   | 32.00                       | 23.00 | -     | -     |
| 80  |               |                   | 182 ft. N  | 24 Hour | 07/26/23   | 32.00                       | 22.00 | -     | -     |
| 81  | Mount Hood    | Davos             | 300 ft. N  | 24 Hour | 07/12/23   | 19.00                       | 19.00 | -     | -     |
| 82  |               |                   | 282 ft. N  | 24 Hour | 07/19/23   | 18.00                       | 20.00 | -     | -     |
| 83  |               |                   | 282 ft. N  | 24 Hour | 07/20/23   | 18.00                       | 21.00 | -     | -     |
| 84  |               |                   | 282 ft. N  | 24 Hour | 07/21/23   | 17.00                       | 21.00 | -     | -     |
| 85  |               |                   | 282 ft. N  | 24 Hour | 07/22/23   | 18.00                       | 22.00 | -     | -     |
| 86  |               |                   | 282 ft. N  | 24 Hour | 07/23/23   | 17.00                       | 21.00 | -     | -     |
| 87  |               |                   | 282 ft. N  | 24 Hour | 07/24/23   | 17.00                       | 20.00 | -     | -     |
| 88  |               |                   | 282 ft. N  | 24 Hour | 07/25/23   | 18.00                       | 21.00 | -     | -     |
| 89  | Parkway       | Muldoon           | 285 ft. E  | 24 Hour | 06/20/23   | -                           | -     | 17.00 | 17.00 |
| 90  |               |                   | 285 ft. E  | 24 Hour | 06/21/23   | -                           | -     | 17.00 | 17.00 |
| 91  |               |                   | 274 ft. E  | 24 Hour | 08/22/23   | -                           | -     | 19.00 | 20.00 |
| 92  |               |                   | 274 ft. E  | 24 Hour | 08/23/23   | -                           | -     | 19.00 | 20.00 |
| 93  |               |                   | 274 ft. E  | 24 Hour | 08/24/23   | -                           | -     | 19.00 | 20.00 |
| 94  | Pembroke      | 020               | 267 ft. S  | 24 Hour | 08/15/23   | 25.00                       | 25.00 | -     | -     |
| 95  |               |                   | 267 ft. S  | 24 Hour | 08/16/23   | 25.00                       | 25.00 | -     | -     |
| 96  | Pine          | 003               | 367 ft. N  | 24 Hour | 07/17/23   | 40.00                       | 30.00 | -     | -     |
| 97  |               |                   | 367 ft. N  | 24 Hour | 07/18/23   | 41.00                       | 30.00 | -     | -     |
| 98  |               |                   | 367 ft. N  | 24 Hour | 07/19/23   | 40.00                       | 30.00 | -     | -     |
| 99  |               |                   | 367 ft. N  | 24 Hour | 07/20/23   | 41.00                       | 31.00 | -     | -     |
| 100 |               |                   | 367 ft. N  | 24 Hour | 07/21/23   | 41.00                       | 31.00 | -     | -     |

## 2023 SPEED STUDIES

| CNT | LOCATION         |                 | DIST / DIR | TYPE    | COUNT DATE | 85th PERCENTILE SPEED (mph) |       |       |       |
|-----|------------------|-----------------|------------|---------|------------|-----------------------------|-------|-------|-------|
|     | STREET           | CROSS REFERENCE |            |         |            | NORTH                       | SOUTH | EAST  | WEST  |
| 101 | Pine             | 003             | 367 ft. N  | 24 Hour | 07/22/23   | 41.00                       | 31.00 | -     | -     |
| 102 |                  |                 | 367 ft. N  | 24 Hour | 07/23/23   | 41.00                       | 31.00 | -     | -     |
| 103 |                  |                 | 367 ft. N  | 24 Hour | 09/20/23   | 32.00                       | 32.00 | -     | -     |
| 104 |                  |                 | 367 ft. N  | 24 Hour | 09/21/23   | 34.00                       | 33.00 | -     | -     |
| 105 |                  | 007             | 76 ft. N   | 24 Hour | 07/17/23   | 31.00                       | 33.00 | -     | -     |
| 106 |                  |                 | 76 ft. N   | 24 Hour | 07/18/23   | 31.00                       | 33.00 | -     | -     |
| 107 |                  |                 | 76 ft. N   | 24 Hour | 07/19/23   | 30.00                       | 33.00 | -     | -     |
| 108 |                  |                 | 76 ft. N   | 24 Hour | 07/20/23   | 31.00                       | 33.00 | -     | -     |
| 109 |                  |                 | 76 ft. N   | 24 Hour | 07/21/23   | 32.00                       | 34.00 | -     | -     |
| 110 |                  |                 | 76 ft. N   | 24 Hour | 07/22/23   | 31.00                       | 33.00 | -     | -     |
| 111 |                  |                 | 76 ft. N   | 24 Hour | 07/23/23   | 31.00                       | 33.00 | -     | -     |
| 112 | Rakof            | Pavalof         | 97 ft. W   | 24 Hour | 08/30/23   | -                           | -     | 24.00 | 24.00 |
| 113 |                  |                 | 97 ft. W   | 24 Hour | 08/31/23   | -                           | -     | 23.00 | 24.00 |
| 114 | San Antonio      | San Ernesto     | 223 ft. S  | 24 Hour | 08/30/23   | 31.00                       | 22.00 | -     | -     |
| 115 |                  |                 | 223 ft. S  | 24 Hour | 08/31/23   | 35.00                       | 22.00 | -     | -     |
| 116 | San Ernesto      | Hoyt            | 475 ft. W  | 24 Hour | 08/30/23   | -                           | -     | 20.00 | 41.00 |
| 117 |                  |                 | 475 ft. W  | 24 Hour | 08/31/23   | -                           | -     | 20.00 | 40.00 |
| 118 |                  | San Antonio     | 412 ft. W  | 24 Hour | 08/30/23   | 28.00                       | 22.00 | -     | -     |
| 119 |                  |                 | 412 ft. W  | 24 Hour | 08/31/23   | 27.00                       | 20.00 | -     | -     |
| 120 | San Roberto      | Klevin          | 283 ft. E  | 24 Hour | 08/30/23   | -                           | -     | 27.00 | 28.00 |
| 121 |                  |                 | 283 ft. E  | 24 Hour | 08/31/23   | -                           | -     | 27.00 | 28.00 |
| 122 |                  | Lane            | 105 ft. E  | 24 Hour | 08/30/23   | -                           | -     | 22.00 | 32.00 |
| 123 |                  |                 | 105 ft. E  | 24 Hour | 08/31/23   | -                           | -     | 21.00 | 33.00 |
| 124 | Shelikof         | Rakof           | 440 ft. N  | 24 Hour | 08/30/23   | 28.00                       | 21.00 | -     | -     |
| 125 |                  |                 | 440 ft. N  | 24 Hour | 08/31/23   | 28.00                       | 23.00 | -     | -     |
| 126 | Staedem          | Towne           | 75 ft. E   | 24 Hour | 07/12/23   | -                           | -     | 28.00 | 23.00 |
| 127 | Stephenson       | Bates           | 144 ft. S  | 24 Hour | 06/27/23   | 22.00                       | 23.00 | -     | -     |
| 128 |                  |                 | 144 ft. S  | 24 Hour | 06/28/23   | 23.00                       | 23.00 | -     | -     |
| 129 | Stewart          | Mile Hi Way     | 263 ft. W  | 24 Hour | 06/27/23   | -                           | -     | 30.00 | 26.00 |
| 130 | Strathmore       | Dimond          | 679 ft. N  | 24 Hour | 06/14/23   | 27.00                       | 27.00 | -     | -     |
| 131 | Tanglewood       | 036             | 275 ft. N  | 24 Hour | 06/20/23   | 15.00                       | 16.00 | -     | -     |
| 132 |                  |                 | 275 ft. N  | 24 Hour | 06/21/23   | 17.00                       | 18.00 | -     | -     |
| 133 | Terrace          | Blue Spruce     | 85 ft. N   | 24 Hour | 06/27/23   | 28.00                       | 38.00 | -     | -     |
| 134 | Timberline       | Alyeska Hwy     | 178 ft. S  | 24 Hour | 07/12/23   | 21.00                       | 24.00 | -     | -     |
| 135 | Toloff           | 088             | 630 ft. S  | 24 Hour | 07/25/23   | 26.00                       | 39.00 | -     | -     |
| 136 | Van Buren        | 047             | 157 ft. N  | 24 Hour | 08/31/23   | 23.00                       | 24.00 | -     | -     |
| 137 | Waldron          | Roger           | 275 ft. E  | 24 Hour | 08/30/23   | 28.00                       | 36.00 | -     | -     |
| 138 |                  |                 | 275 ft. E  | 24 Hour | 08/31/23   | 28.00                       | 36.00 | -     | -     |
| 139 | Westpark         | 080             | 190 ft. S  | 24 Hour | 07/12/23   | 35.00                       | 34.00 | -     | -     |
| 140 |                  | Big Bend        | 150 ft. S  | 24 Hour | 07/12/23   | 30.00                       | 33.00 | -     | -     |
| 141 |                  | Seafarer        | 140 ft. N  | 24 Hour | 07/25/23   | 24.00                       | 23.00 | -     | -     |
| 142 | Whisperwood Park | Skwentna        | 127 ft. W  | 24 Hour | 06/13/23   | -                           | -     | 23.00 | 27.00 |
| 143 |                  | Whisper Ridge   | 100 ft. W  | 24 Hour | 06/13/23   | -                           | -     | 30.00 | 24.00 |

# 2023 SPEED STUDIES

## TRAVEL SPEED vs. POSTED SPEED



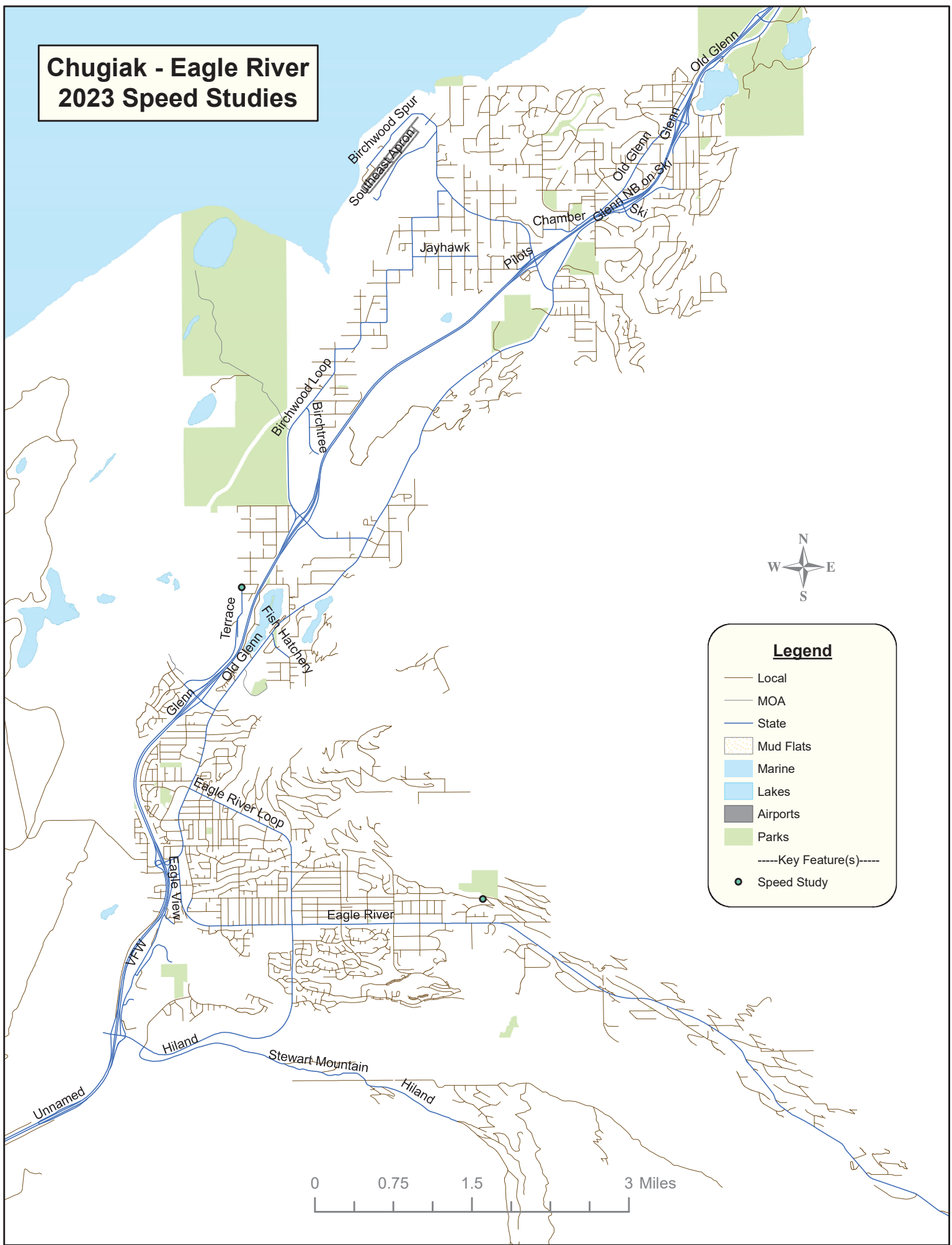
Each dot represents the difference between the average 85th percentile speed for both directions versus posted speed for each study



# Anchorage Bowl 2023 Speed Studies



# Chugiak - Eagle River 2023 Speed Studies



**Legend**

- Local
- MOA
- State
- ▨ Mud Flats
- Marine
- Lakes
- Airports
- Parks
- Key Feature(s) ---
- Speed Study



# Girdwood 2023 Speed Studies

