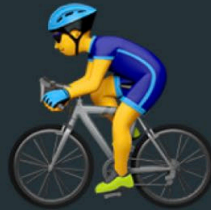


# What's the deal with the 85th percentile speed?



**85th percentile speed**



**setting speed limits**



**traffic calming**



**signals + crossing**



**bike infrastructure**

### C. **Setting speed limits in speed zones**

The 85<sup>th</sup> percentile speed is the principal determining factor in setting speed limits in speed zones, with adjustment made according to AS 19.10.072. Speed limits within speed zones should be set as follows:



STATE OF ALASKA  
DEPARTMENT OF TRANSPORTATION  
AND PUBLIC FACILITIES

**Policy and Procedure**

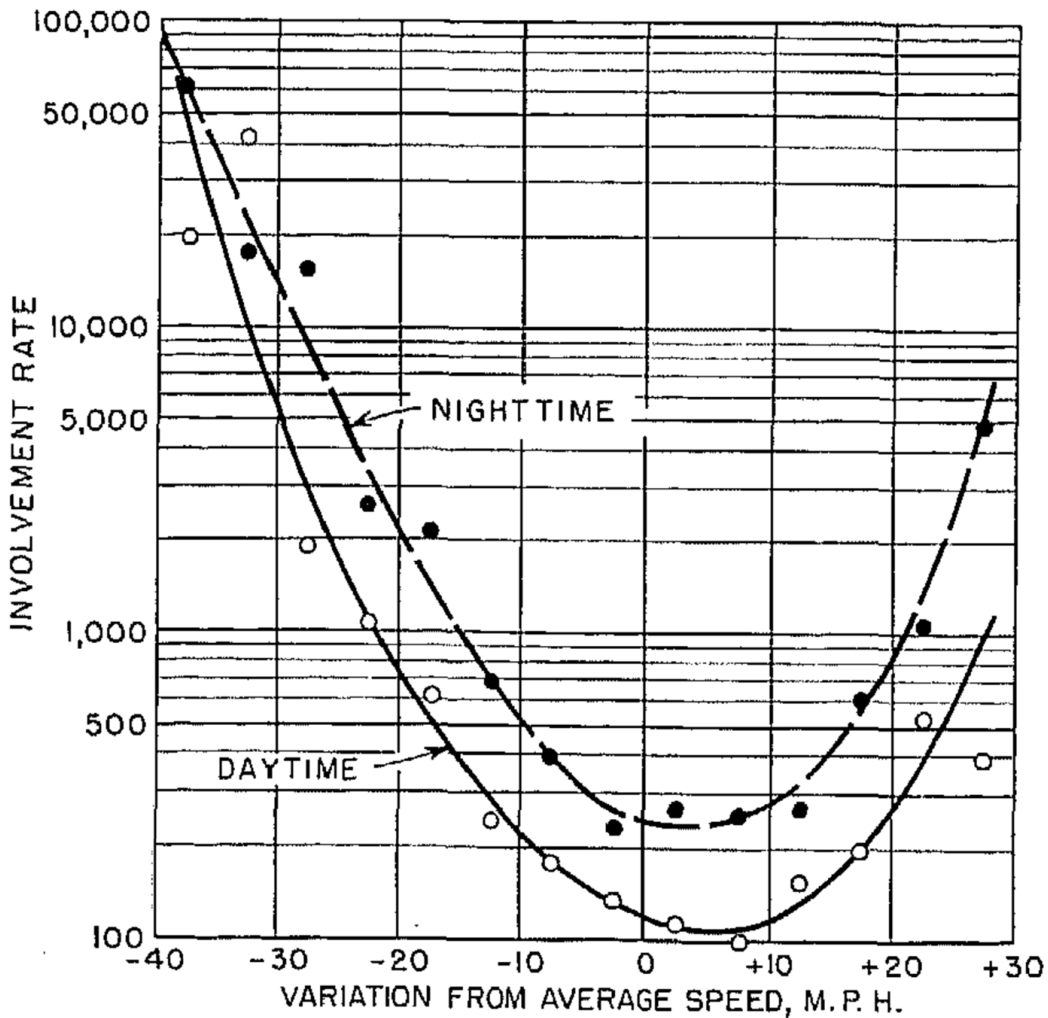
# ACCIDENTS on main rural highways

RELATED TO

SPEED, DRIVER, & VEHICLE



Publication Number 700  
Revised April 1954



“Most drivers are observed to be **careful, reasonable, and prudent**. They are a common group of law-abiding, courteous drivers.” - *AKDOT*

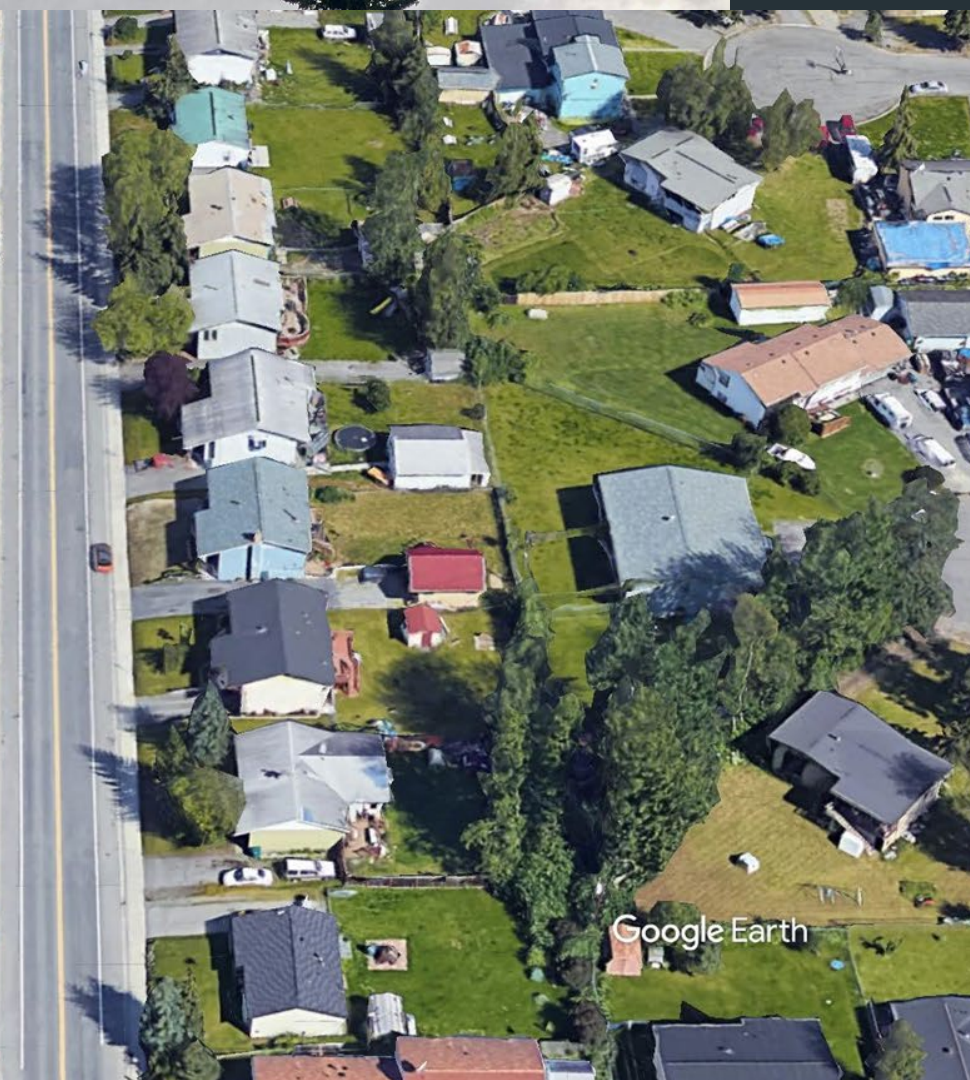
“The large majority of drivers are **reasonable and prudent**, do not want to have a crash, [and] desire to reach their destination in the shortest possible time” - *TXDOT*









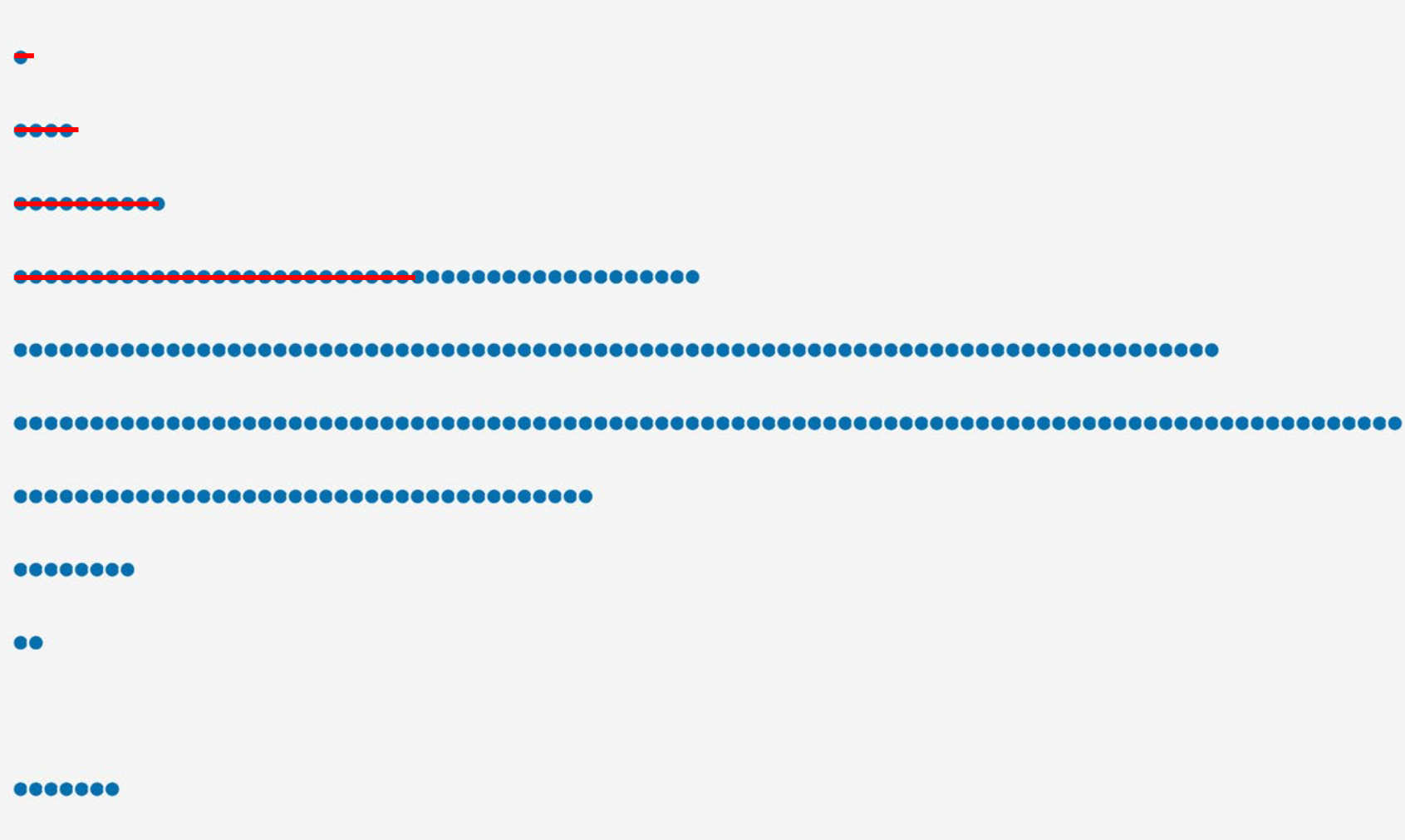


Google Earth

60  
55  
50  
45  
40  
35  
30  
25  
20  
15  
10  
5



60  
55  
50  
45  
40  
35  
30  
25  
20  
15  
10  
5





WHAT'S  
THE DEAL?  
**85<sup>th</sup>**



SPEED  
LIMIT  
**25**

60  
55  
50  
45  
40  
35  
30  
25  
20  
15  
10  
5

